

BASIS OF BEARING
EAST LINE OF TAX LOT 700
AS PER TERRA SURVEYING
CS #90041

BOUNDARY ADJUSTMENT
SE 1/4, SEC 6, T 2 N, R 8 E, WM
COUNTY OF HOOD RIVER, STATE OF OREGON

OWNERSHIP
TAX LOT 501 - CITY OF CASCADE LOCKS
TAX LOT 300 - PORT OF CASCADE LOCKS
TAX LOT 500 - PORT OF CASCADE LOCKS

LEGEND

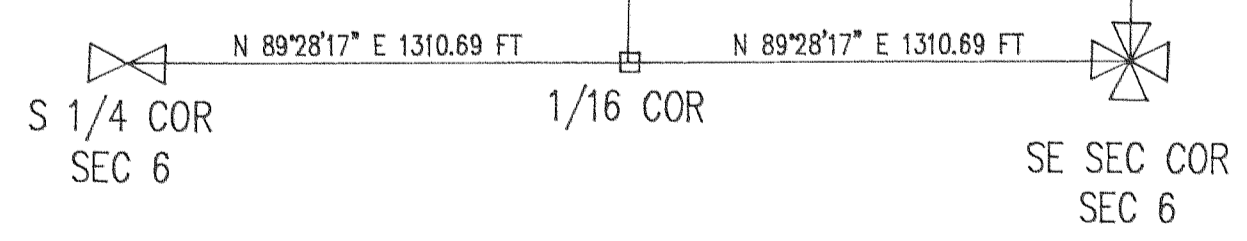
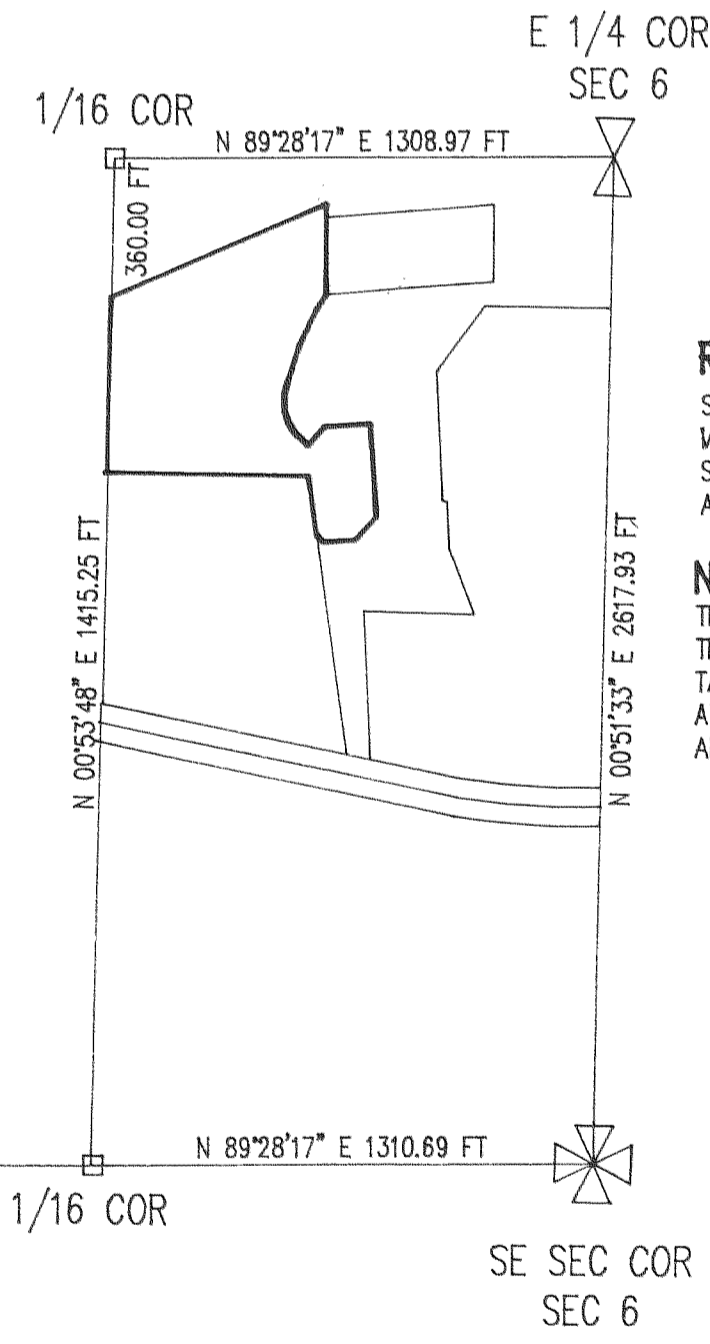
- = SET 1/2" IR WITH PLASTIC CAP MARKED OR #932 & WA #22098 EXCEPT AS NOTED
- = FOUND MONUMENT AS NOTED
- = CALCULATED CORNER AS NOTED
- ⊗ = CALCULATED 1/4 CORNER AS NOTED
- ⊠ = CALCULATED SECTION CORNER AS NOTED

REFERENCE SURVEY

SURVEY BY TERRA SURVEYING
MAY 1990, CS #90041
SURVEY BY KLEIN & ASSOC.
APRIL 1991, CS #91031

NARRATIVE

THE PURPOSE WAS TO ADJUST THE BOUNDARY OF PROPERTY OWNED BY THE CITY OF CASCADE LOCKS (TAX LOT 501) TO INCLUDE PORTIONS OF TAX LOTS 500 AND 300 OWNED BY THE PORT OF CASCADE LOCKS. ALL MONUMENTS FOUND AND SET ALONG WITH THE MEASURED BEARINGS AND DISTANCES ARE SHOWN HEREIN.



BOUNDARY ADJUSTMENT FOR THE CITY OF CASCADE LOCKS

FILED

MAY 12 1998
Rick J. All
COUNTY SURVEYOR

REGISTERED PROFESSIONAL LAND SURVEYOR

OREGON
JULY 17, 1970
ANTHONY C. KLEIN
932

Klein & Assoc.
LAND SURVEYING
1109 Country Club Road
Hood River, Oregon 97031
Tele: (503)386-3322
DATE SURVEYED: APRIL 1998
JOB NO.: 97070