

# PROPERTY SURVEY

TAX LOT 9900, 3N-10-36CB  
 IN THE SW.1/4, SECTION 36,  
 TOWNSHIP 3 N., RANGE 10 E., W.M.  
 CITY OF HOOD RIVER,  
 HOOD RIVER COUNTY, OREGON  
 IN BLOCK 3 OF MIDDLETON SUBD.  
 JANUARY 14, 1998

## NARRATIVE :

SURVEY PURPOSE IS TO ESTABLISH THE CORNERS FOR LOT 1, BLOCK 3, PLAT OF MIDDLETONS SUBDIVISION OF LOT C OF PLEASANT VIEW PLAT IN THE SOUTHWEST 1/4 OF SECTION 36, TOWNSHIP 3 NORTH, RANGE 10 EAST, WILLAMETTE MERIDIAN, CITY OF HOOD RIVER, HOOD RIVER COUNTY, OREGON. PRIOR SURVEY BY KLEIN & ASSOCIATES, HOOD RIVER COUNTY, NO. 85007, PROVIDED A SURVEY OF VARIOUS LOTS IN BLOCK 1, ALSO FINDING MONUMENTS IN BLOCK 2, CLOSELY MATCHING PLAT CALLS.

IN THE FIELD, THE MONUMENTS SHOWN AS FOUND ON THE REFERENCED SURVEY ALONG THE SOUTH LINE OF BLOCK 1 WERE REFOUND, AS PER SURVEY INFORMATION. THE BLOCK LINE PRODUCED OUT TO NINTH STREET AND THE SURVEY CALL ANGLE TURNED TO FOUND MONUMENTS AT THE SOUTHWEST CORNER OF LOTS 18 AND 14, BLOCK 1, THE NORTHEAST CORNER OF BLOCK 2, AND THE NORTHEAST CORNER OF LOT 4, BLOCK 2. THE NORTHEAST CORNER OF BLOCK 2 HELD FOR WEST LINE OF NINTH STREET. LOT LAID OUT WITH THE EAST-WEST LINES PARALLEL WITH THE SOUTH LINE OF BLOCK 1 AND THE NORTH-SOUTH LINE ALONG WEST SIDE OF NINTH STREET AT CALL DISTANCES NORTH OF THE SOUTH LINE OF BLOCK 1 PRODUCED WESTERLY. SET 5/8" x 30' IRON RODS WITH PLASTIC CAPS #2786 AS SHOWN.

## REFERENCES :

- DON FLERCHINGER SURVEY BY KLEIN & ASSOC. W.O. #85007, MAY 14, 1985.

**FILED**

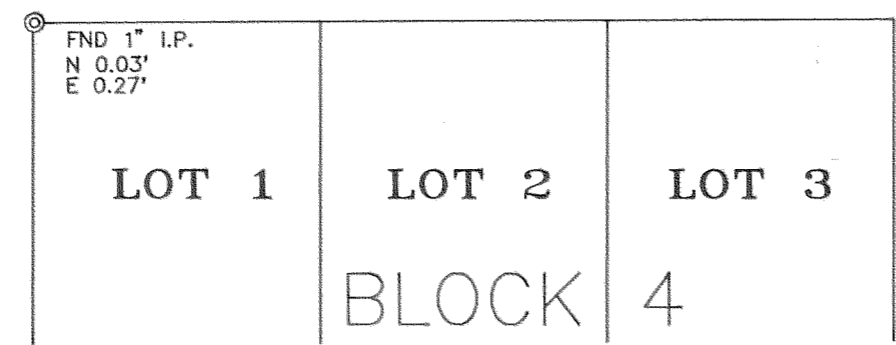
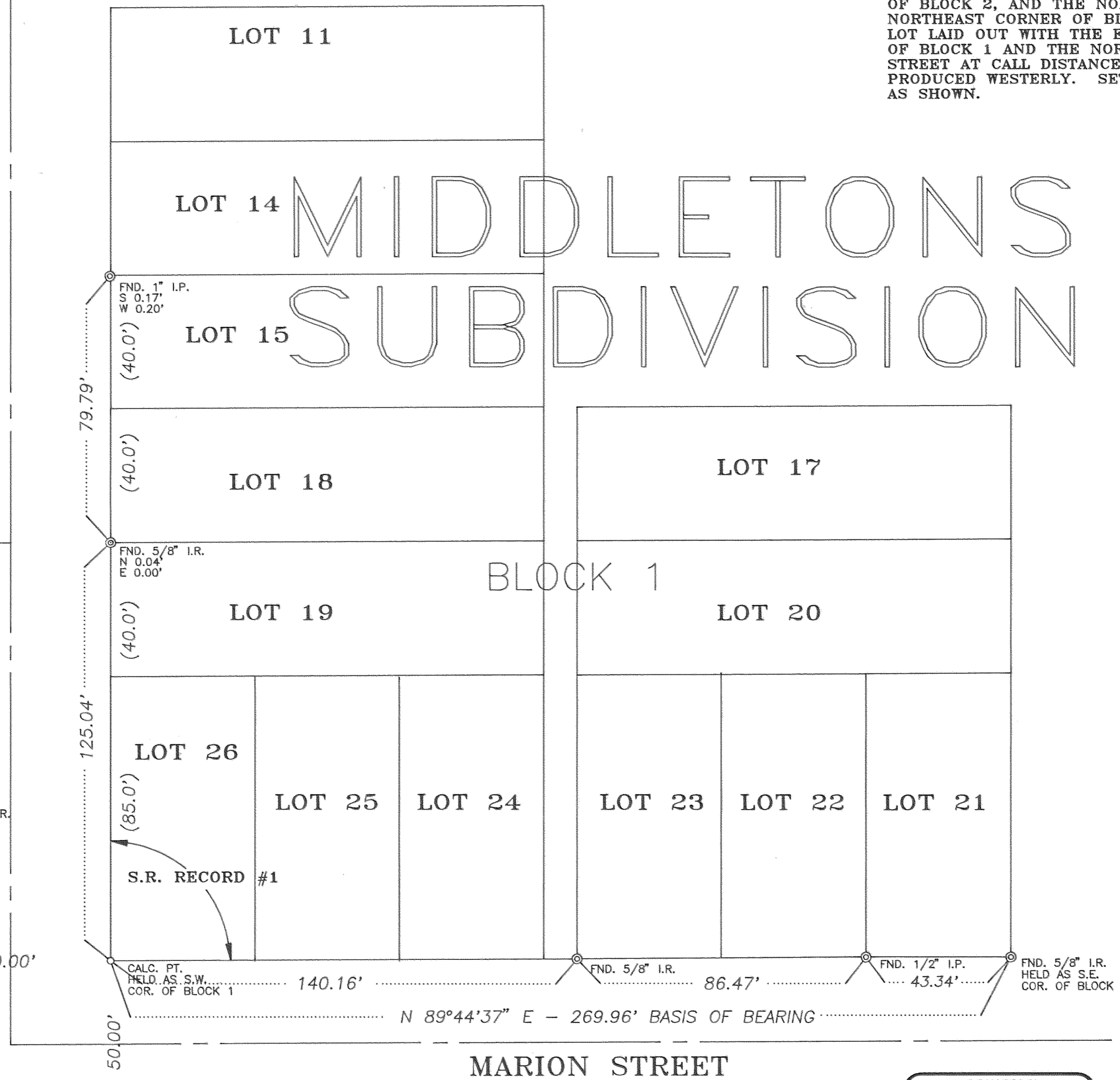
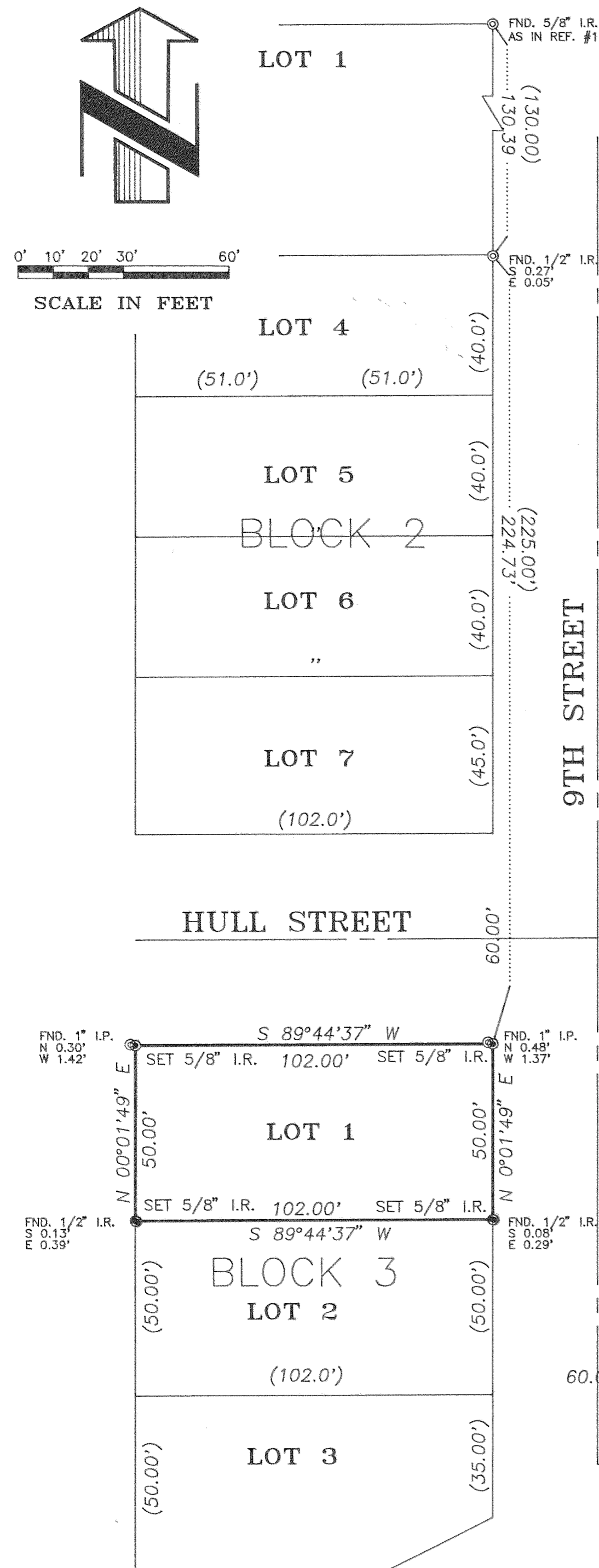
FEB 26, 1998

*R. J. Arnold*  
 COUNTY SURVEYOR

## LEGEND :

- SET 5/8" x 30" RE-BAR WITH YELLOW PLASTIC CAP, #2786.
- ⊙ FOUND MONUMENTS, AS NOTED.
- CALCULATED CORNERS, NOT SET.
- SET HUB & TACK.
- SET P.K. NAIL OR AS NOTED.
- x— EXISTING FENCE LINE.

Date	No.	Revisions	By	App.
SURVEY FOR <b>THOMPSON HEATING, COOLING &amp; REFRIGERATION</b> LOT 1, BLOCK 3, MIDDLETONS SUBDIVISION OF LOT C OF PLEASANT VIEW PLAT IN THE S.W.1/4, SECTION 36, TWP.3 N., RGE.10 E. W.M. HOOD RIVER, HOOD RIVER COUNTY, OREGON				
<b>TENNESON ENGINEERING CORP.</b> CONSULTING ENGINEERS 409 LINCOLN STREET THE DALLES, OREGON 97058 541-296-9177 FAX 541-296-6657				
Survey	B.R.H.	Design	Checked	Date
Drawn	L.J.S.	DWG. No.	S9128	Approved
		Work Order No.	9128	Scale
			1/14/98	1"=30'
			1 of 1	



REGISTERED PROFESSIONAL LAND SURVEYOR  
*Bradley R. Huffman*  
 OREGON  
 JAN. 21, 1997  
 BRADLEY R. HUFFMAN  
 #2786

EXPIRES: 6/30/99