

Partition Plat # 9803

Instrument received on the 8 day of JANUARY, 1998 at 10:22 A.M.

Hood River County Director of Records and Assessments

SURVEYOR'S CERTIFICATE

William J. Frost being first duly sworn, depose and say that I have correctly surveyed and marked with proper monuments the lands represented on this Partition Plat, the boundaries being described in Instruments: (Portion of) #821401, dated Sept. 29, 1982. Hood River County Deed Records to

JARRELL J. BELL and SHERMADENE WILLIAMS

WATER RIGHTS STATEMENT Water Rights are subject to the statutory powers of Farmers Irrigation District and Ice Fountain Water District. No other Rights Exist.

ACKNOWLEDGEMENTS

We the owner(s) of the land shown herein, hereby declare that this division of land has been made with our free consent and in accordance with our desires.

Jarrell J. Bell Date Shermadene Williams Date

STATE OF Oregon COUNTY OF Hood River ss. Subscribed and sworn to before me on this 9th day of August, 1998

Notary Public for the State of Oregon My commission expires April 24, 2001

Notary Public for the State of Oregon My commission expires April 24, 2001

APPROVALS

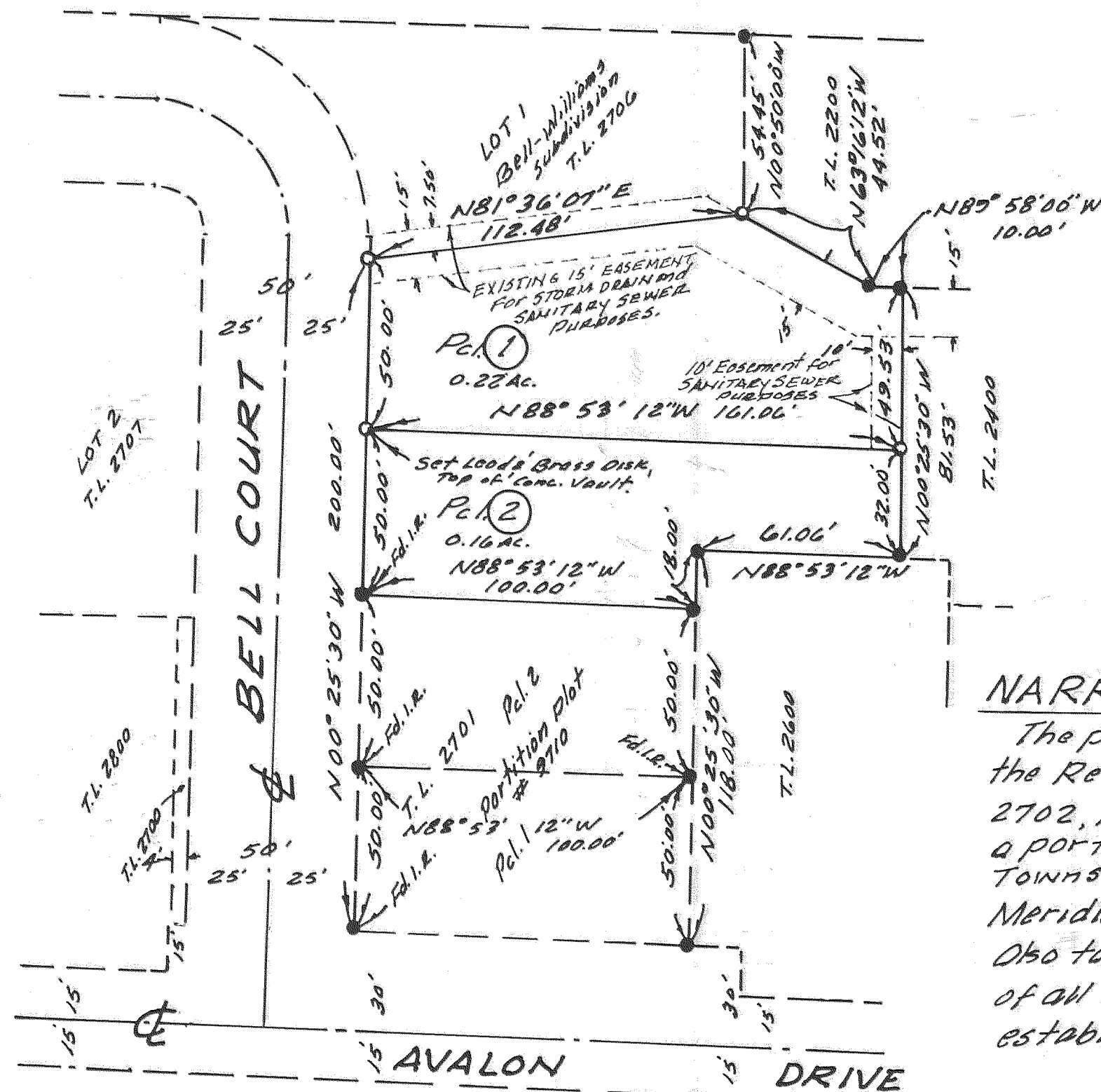
I hereby certify that all taxes and assessments due hereon have been fully paid as required by law. Daniel Guy Chamness, CPA Hood River County Director of Budget and Finance

I hereby certify this partition was examined and approved as of this 11 day of August, 1998. Rick A. Arnold Hood River County Surveyor

I hereby certify this partition was examined and approved as of this 8 day of January, 1998. Planning File Number 96-545 (minor) Jeffrey S. Hunt Hood River County Planning Director

PARTITION PLAT

for Tentative Minor Partition # 96-545, being Tax Lot #2702, Assessor Map #3N1035 DB, Hood River County, Oregon.



NARRATIVE:

The purpose of this Plat is to file for the Record the Partitioning of Tax Lot 2702, Assessor Map #3N1035 DB, being a portion of the S.E. 1/4 of Section 35, Township 3 North, Range 10 East, Willamette Meridian, Hood River County, Oregon. Also to file for the Record the character of all boundary monuments found or established, as noted hereon.

BASIS OF BEARING:

The Northerly Line of Parcel No. 1, as Shown on a Plat filed Oct. 19, 1994, as Partition Plat No. 9418, being N88°53'12"W.

1/8/98

Certified to be a true and correct copy of the ORIGINAL. Dept. of Records & Assessment by J. Frost; Deputy

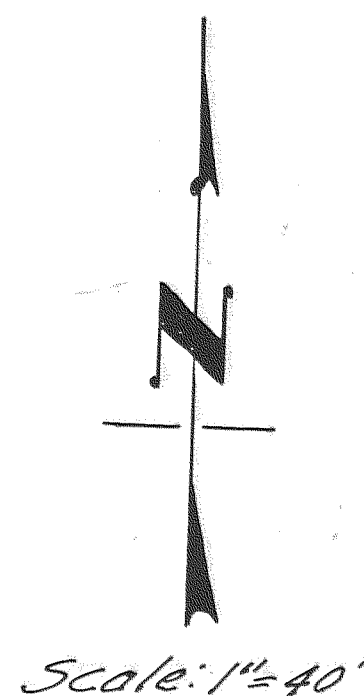
MONUMENT NOTES:

- 1. Found 1" Iron Pipe, with Brass Disk stamped W.J. Frost, P.L.S.D. #1971 at all points shown thus -o-, unless otherwise noted, (as per Partition Plat # 9418.)
2. Set 1"x30" Iron Pipe with Brass Disk stamped W.J. Frost, P.L.S.D. #1971 at all points shown thus -o-, unless otherwise noted.
3. Found 5/8" Iron Rod, as per Minor Partition Plat #9710 at all points denoted -Fd.I.R.-

FILED

FEB 26, 1998

Rick A. Arnold



REGISTERED PROFESSIONAL LAND SURVEYOR

William J. Frost

OREGON JANUARY 19, 1982 WILLIAM J. FROST 1071

Renewable 12-31-97



Frost's Land, Surveying & Cattle Company

304 Pine Street, Hood River, Oregon. Phone: (541) 386-1342 Fax: (541) 386-5249

Job #192 July 28, 1997