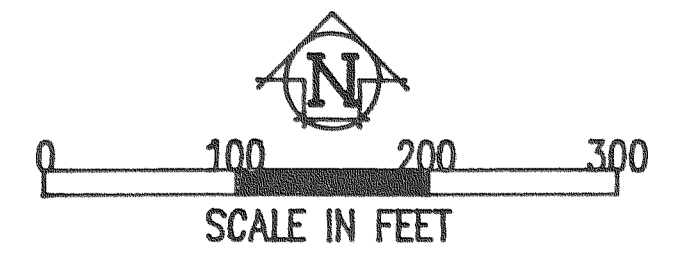
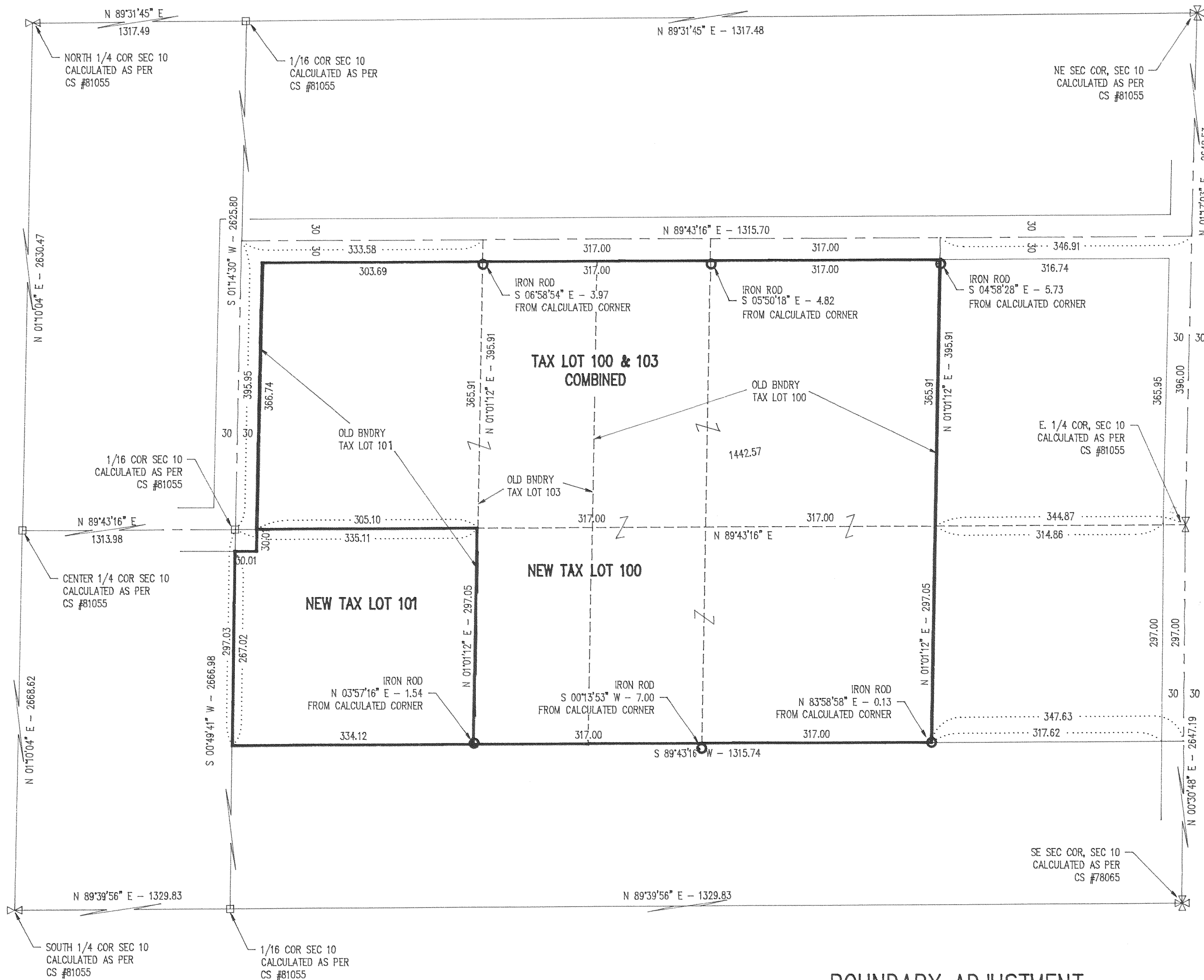


BOUNDARY LINE ADJUSTMENT IN THE E 1/2, SEC 10, T 2 N, R 10 E, WM COUNTY OF HOOD RIVER, STATE OF OREGON



- LEGEND**
- = SET BY DLC SURVEYING IN 1978
RECALCULATED AS PER DLC 1981
SURVEY CS #81055
 - = CALCULATED CORNER AS NOTED
 - ⊠ = CALCULATED 1/4 COR AS NOTED
 - ⊠ = CALCULATED SEC COR AS NOTED

REFERENCE SURVEYS
SURVEYS BY DLC SURVEYING 1978 & 1981
CS #78065 AND CS #81055

FILED
FEB 26, 1998
Rick Sherrell
COUNTY SURVEYOR

NARRATIVE OF BOUNDARY ADJUSTMENT
THE PURPOSE OF THE BOUNDARY ADJUSTMENT WAS TO CHANGE THE BOUNDARY BETWEEN TAX LOTS 101 AND 103. IT WAS ALSO REQUIRED TO COMBINE TAX LOTS 103 AND 100. A SURVEY BY DANNY L. CRON WAS DONE IN 1978 AND SET CORNERS OF THE EXISTING PARCELS. IN 1981 HE DID ANOTHER SURVEY AND FOUND THAT THE EXISTING EAST 1/4 CORNER OF THE SECTION WAS INCORRECT AND FOUND THE CORRECT CORNER. THE MONUMENTS THAT ARE SHOWN ON THE PLAT WERE RECALCULATED BASED ON THE 1981 SURVEY.

**BOUNDARY ADJUSTMENT
FOR
RICK SHERRELL**

REGISTERED
PROFESSIONAL
LAND SURVEYOR

OREGON
JULY 17, 1970
ANTHONY C. KLEIN
932

EXPIRES 6/30/99

Klein & Assoc.

LAND SURVEYING
1109 Country Club Road
Hood River, Oregon 97031
Tele: (503)386-3322
DATE: JANUARY 21, 1998
JOB NO: 98002