

NOTES:

BEARINGS BASED ON COUNTY SURVEY
C.S. #89104, FILED DEC. 28, 1989.
BY DAN CRON, PLS. #1028

REFERENCES:

- COUNTY SURVEY C.S. #89104, FILED DEC. 28, 1989 BY DAN CRON, PLS #1028
- FIR MT. RANCH TOPO SURVEY BY TENNESON ENGINEERING CORP. W.O. #8705, APRIL 26, 1996
- COUNTY SURVEY C.S. #902404, FOR JOHN STARLING, 12/13/89 BY DAN CRON, PLS #1028
- COUNTY SURVEY C.S. #80035, FILED APRIL 21, 1980 BY ANTHONY KLEIN, PLS #932
- COUNTY SURVEY C.S. #79011 FILED JANUARY 2, 1979

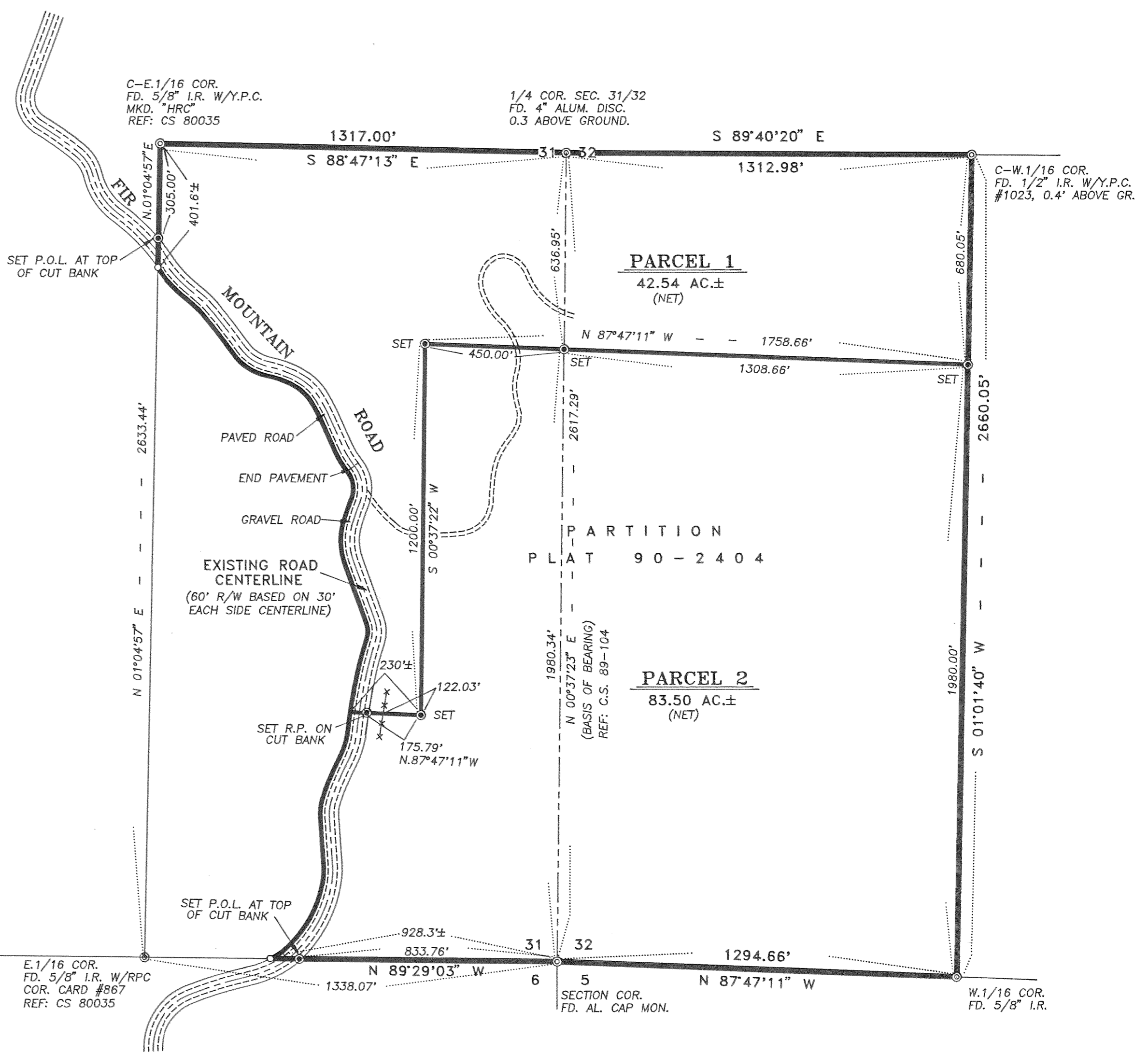
NARRATIVE:

THE PURPOSE OF SURVEY IS TO ESTABLISH EAST LINE, NORTH LINE, AND A PORTION OF WEST LINE DOWN TO FIR MOUNTAIN ROAD, AND THE DIVISION LINE BETWEEN PARCELS 1 AND 2 OF PARTITION PLAT #90-2404.

COUNTY SURVEY #89104, BY DAN CRON, IN PREPARATION OF THE SURVEY PLAT LOCATED SOUTHWEST CORNER OF SECTION 32 ALUMINUM CAP MONUMENT, QUARTER CORNER BETWEEN SECTIONS 31 AND 32, 4" ALUMINUM MONUMENT DISK. THE SURVEY SET WEST 16TH CORNER ON SOUTH LINE OF SECTION 32 A 5/8" IRON ROD. CENTER WEST 16TH CORNER 1/2" IRON ROD WITH PLASTIC CAPS.

COUNTY SURVEY #80035, BY ANTHONY KLEIN, LOCATED EAST 16TH CORNER OF SECTION 31 ON SOUTH LINE AND PRESUMABLY SET THE CENTER EAST 16TH CORNER ON EAST-WEST CENTERLINE OF SECTION 31.

COUNTY SURVEY #79011, REPORTEDLY ESTABLISHED MEASURED SUBDIVISION OF THE NORTHEAST QUARTER OF SECTION 31, GIVING DIFFERENT BEARING AND DIMENSION RELATIONSHIPS ALONG THE SOUTH LINE OF THE EAST HALF OF THE NORTHEAST QUARTER OF SECTION 31 THAN SHOWN ON COUNTY SURVEY #80035. FIELD SEARCH RECOVERED ALL CORNERS AS DESCRIBED ON SURVEYS, HOWEVER MEASURED DISTANCE ALONG THE SOUTH LINE OF NORTHEAST QUARTER OF SECTION 31 CONFLICTED WITH THE DIMENSIONS SHOWN ON COUNTY SURVEY #80035 AND AGREED WITH COUNTY SURVEY #79011. PARTY CHIEF FOR COUNTY AT THE TIME THAT BOTH SURVEYS WERE DONE BY DICK ARNOLD WHO IS CURRENTLY THE HOOD RIVER COUNTY SURVEYOR. MR. ARNOLD WAS CONTACTED AND ASKED TO RESOLVE THE PROBLEM. HE REVIEWED BOTH SURVEYS, DID ADDITIONAL FIELD WORK AND DETERMINED THAT THE DIMENSIONS SHOWN ON THE COUNTY SURVEY #80035 WERE CORRECT AND HAT ON SURVEY #79011 WERE INCORRECT BY SUBSTANTIAL DIFFERENCES. HE MOVED AND RESET THE 5/8" IRON ROD AT THE CENTER EAST 16TH CORNER IN SECTION 31 TO REFLECT SUCH CORRECTED SURVEY. USING THE FOUND MONUMENTS AND CORRECTED MONUMENTS, TRAVERSE WAS RUN AROUND THE SUBJECT PROPERTY AS COVERED IN THE PARTITION PLAT. TESTED FOR CLOSURE AND THEREAFTER OFFSET TO THE TRUE LINE ALONG THE EAST LINE, NORTH LINE, THE PORTION OF WEST LINE DOWN TO FIR MOUNTAIN ROAD. THE DIVISION LINE BETWEEN PARCELS 1 AND 2 WAS THEN RUN IN ACCORDANCE WITH THE PARTITION PLAT WITH 5/8" X 30" IRON RODS WITH PLASTIC CAP #385 AS SHOWN ON ATTACHED PLAT. AS NOTED, WEST LINE AND SOUTH LINE INTERSECTIONS OF PARCEL 1 BOUNDARY WITH WEST LINE OF FIR MOUNTAIN ROAD, WERE WITNESSED BY IRON RODS SET ON THE TOP OF THE CUT BANK ON THE EAST SIDE OF THE ROAD. ROAD ALIGNMENT WAS NOT TRACED.



LEGEND:

- ⊙ SET 5/8" DIA. x 30" RE-BAR WITH YELLOW PLASTIC CAP, #385.
- ⊙ FOUND MONUMENTS, AS NOTED.
- CALCULATED CORNERS, NOT SET.
- SET HUB & TACK.
- SET P.K. NAIL OR AS NOTED.
- x- EXISTING FENCE LINE.

REGISTERED PROFESSIONAL LAND SURVEYOR
DONALD J. BRANTON
OREGON
OCTOBER 13, 1956
DONALD J. BRANTON
385

EXPIRES: 12/31/97

Date	No.	Revisions	By	App.
SURVEY FOR RICHARD STRACHAN PARCELS #1 AND #2 PARTITION PLAT 90-2404 IN SECTIONS 31 & 32, TWP. 2 N., RANGE 11 E. W.M. HOOD RIVER COUNTY, OREGON				
TENNESON ENGINEERING CORP. CONSULTING ENGINEERS 409 LINCOLN STREET THE DALLES, OREGON 97058 541-296-9177 FAX 541-296-6657				
Survey	Calc.	Checked	Date	Scale
T.E.C.	D.O.E.	<i>[Signature]</i>	10-1-97	1"=300'
Drawn	DWG. No.	Approved	Work Order No.	Sheet
S.D.H.	S8705	<i>[Signature]</i>	8705	1 of 1

97070