




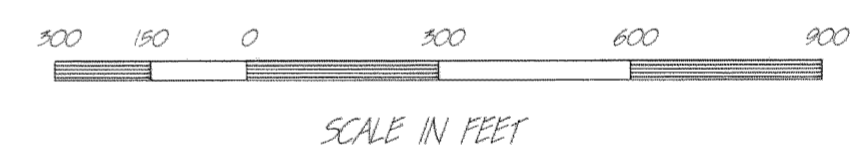
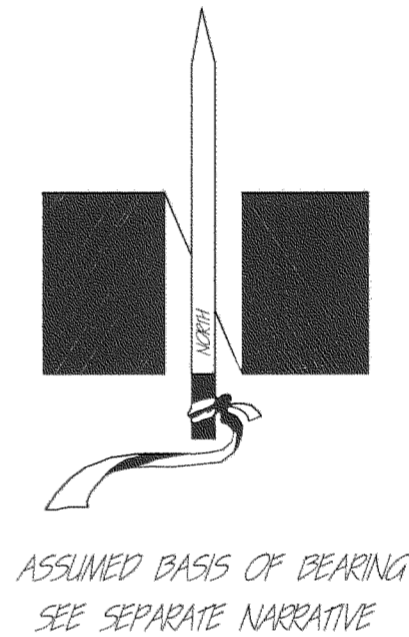
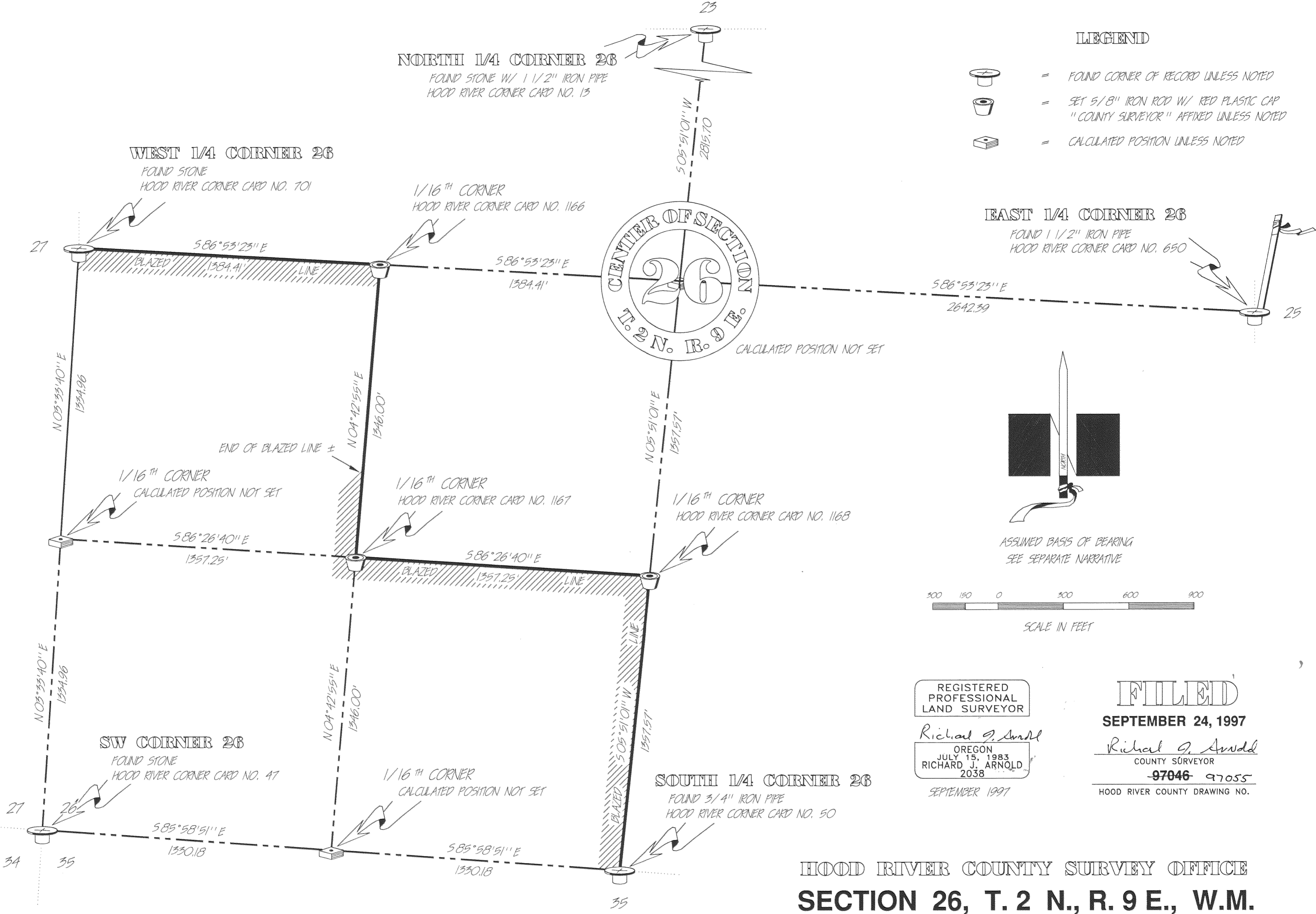
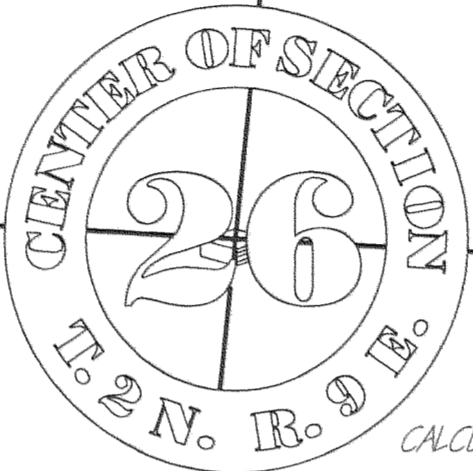
NORTH 1/4 CORNER 26
 FOUND STONE W/ 1 1/2" IRON PIPE
 HOOD RIVER CORNER CARD NO. 13

WEST 1/4 CORNER 26
 FOUND STONE
 HOOD RIVER CORNER CARD NO. 701

1/16TH CORNER
 HOOD RIVER CORNER CARD NO. 1166

- LEGEND**
-  = FOUND CORNER OF RECORD UNLESS NOTED
 -  = SET 5/8" IRON ROD W/ RED PLASTIC CAP "COUNTY SURVEYOR" AFFIXED UNLESS NOTED
 -  = CALCULATED POSITION UNLESS NOTED

EAST 1/4 CORNER 26
 FOUND 1 1/2" IRON PIPE
 HOOD RIVER CORNER CARD NO. 650



REGISTERED
 PROFESSIONAL
 LAND SURVEYOR
 Richard J. Arnold
 OREGON
 JULY 15, 1983
 RICHARD J. ARNOLD
 2038
 SEPTEMBER 1997

FILED
 SEPTEMBER 24, 1997
 Richard J. Arnold
 COUNTY SURVEYOR
 97046-97055
 HOOD RIVER COUNTY DRAWING NO.

HOOD RIVER COUNTY SURVEY OFFICE
SECTION 26, T. 2 N., R. 9 E., W.M.
HOOD RIVER COUNTY, OREGON

SEPTEMBER 1997