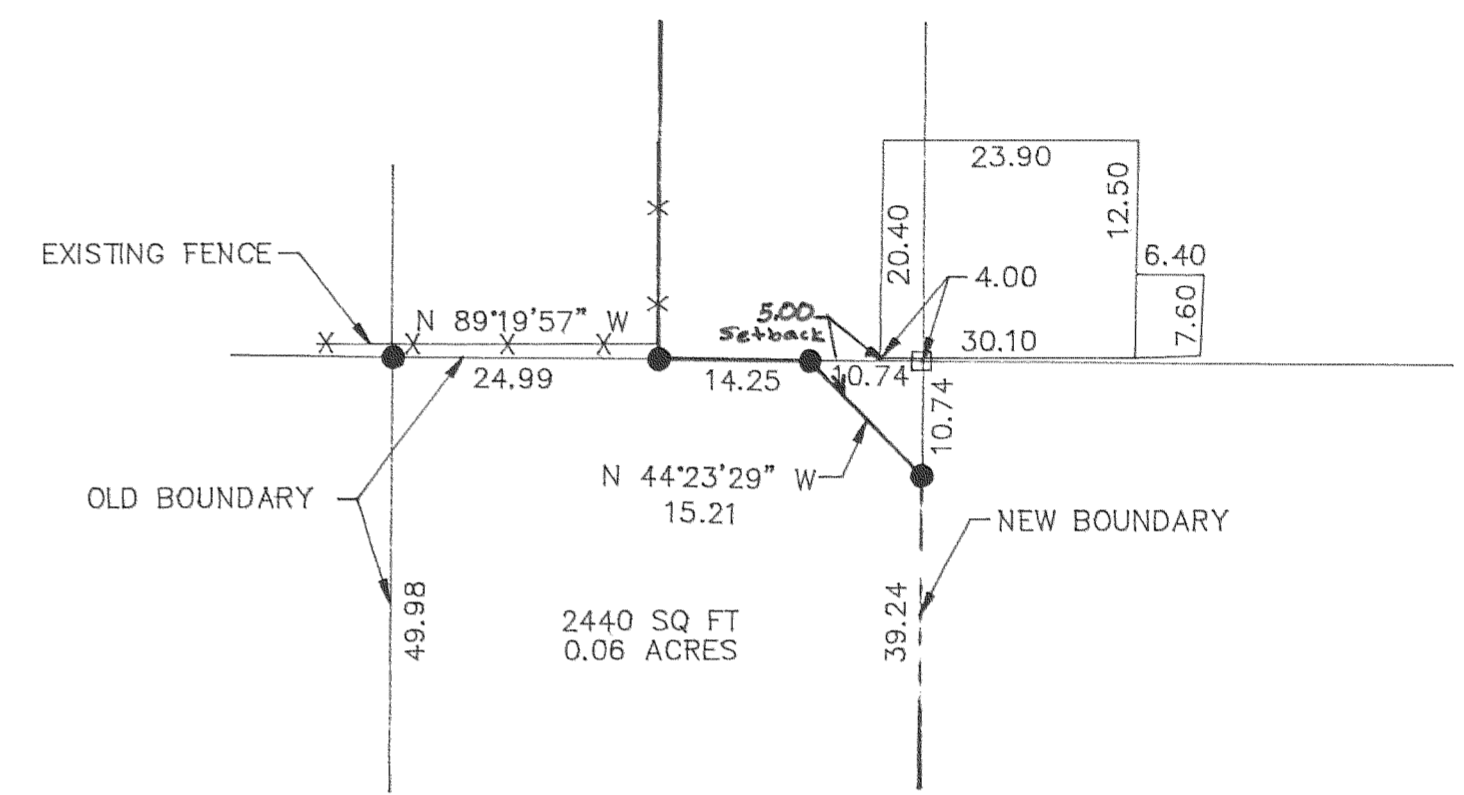
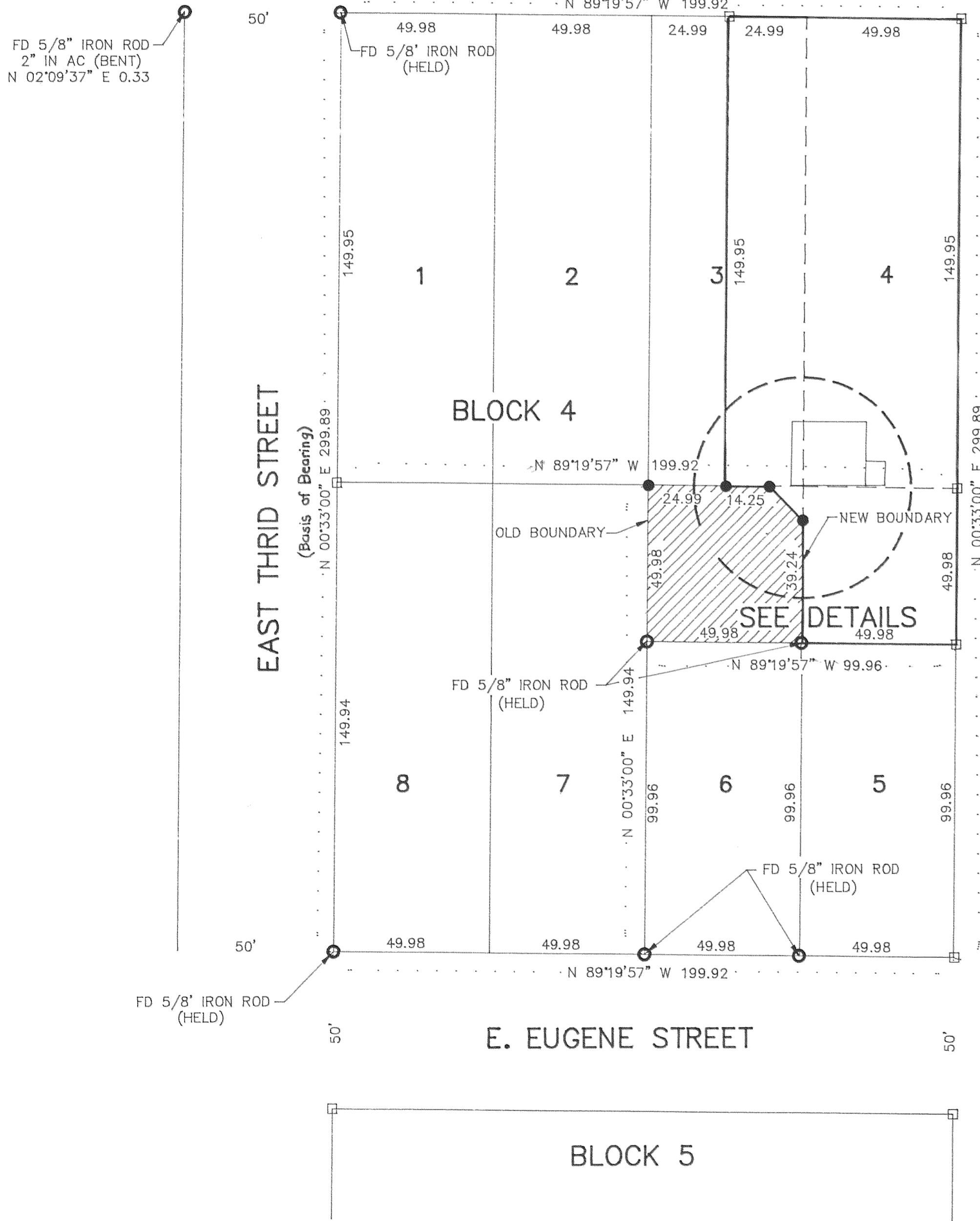
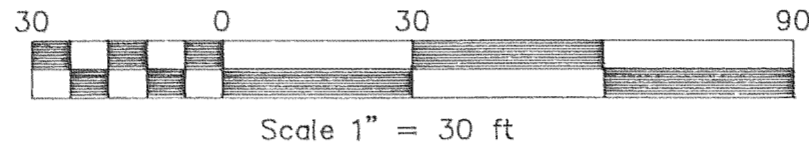


BOUNDARY ADJUSTMENT IN NE 1/4, SEC. 36, T 3 N, R 10 E, WM OF BLOCK 4 WINAN'S ADDITION CITY OF HOOD RIVER, STATE OF OREGON



DETAILS

REFERENCE SURVEYS
SURVEY BY WYEAST SURVEYS
CS #93071

FILED
SEP 24 1997
Rick G. Arl
COUNTY SURVEYOR

NARRATIVE OF SURVEY
THE PURPOSE OF THIS SURVEY WAS TO ADJUST THE BOUNDARY SHOWN HEREIN. ALL MONUMENTS FOUND AND ESTABLISHED ALONG WITH THE MEASURED BEARINGS AND DISTANCES ARE SHOWN HEREIN.

- LEGEND**
- = SET 5/8" IR WITH PLASTIC CAP MARKED OR #932 & WA #22098 EXCEPT AS NOTED
 - = FOUND MONUMENT AS NOTED
 - = CALCULATED CORNER AS NOTED
 - ⊗ = CALCULATED 1/4 COR AS NOTED
 - ⊗ = CALCULATED SEC COR AS NOTED
 - ⊗ = FOUND 1/4 COR AS NOTED
 - ⊗ = FOUND SEC COR AS NOTED

BOUNDARY ADJUSTMENT
FOR
TIM WILSON

REGISTERED
PROFESSIONAL
LAND SURVEYOR

Anthony C. Klein

OREGON
JULY 17, 1970
ANTHONY C. KLEIN
932
EXPIRES 6-30-99

Klein & Assoc.
LAND SURVEYING
1109 Country Club Road
Hood River, Oregon 97031
Tele: (503)386-3322
DATE SURVEYED: JULY 97
JOB NO.: 97038

97054