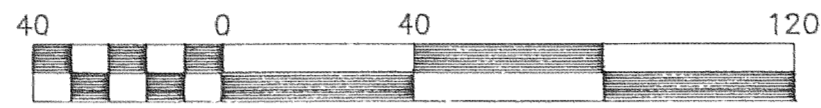


SURVEY IN
 SW 1/4, NW 1/4, SEC 36, T 3 N, R 10 E, WM
 CITY OF HOOD RIVER, STATE OF OREGON
 IN BLK. 1 OF MIDDLETONS SUBDIVISION



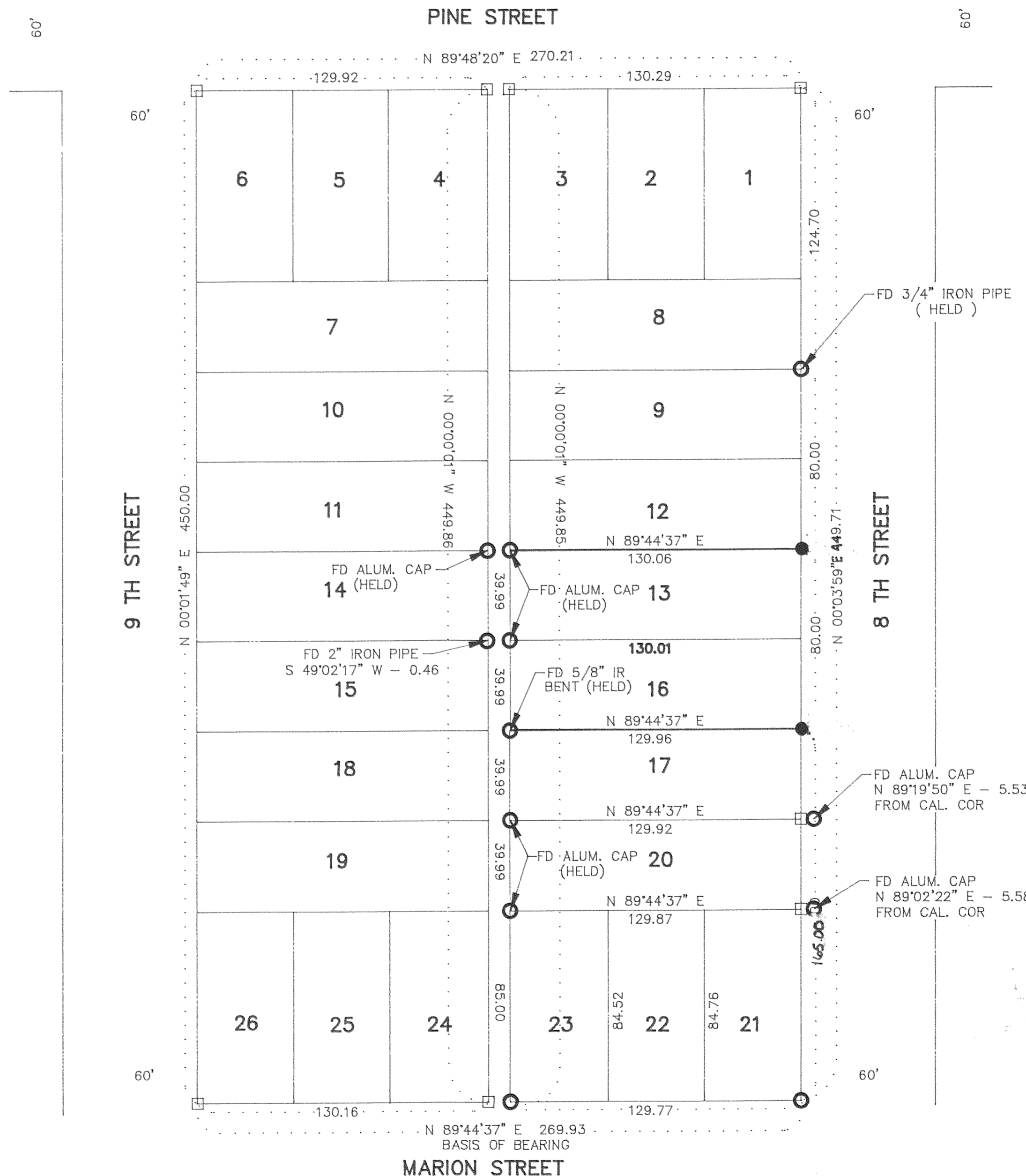
REFERENCE SURVEYS

SURVEY BY NEWTON
 CS #7222
 SURVEY BY BISHOP SURVEYING
 CS #79045
 SURVEY BY KLEIN & ASSOC.
 CS #85048

NARRATIVE OF SURVEY

THE PURPOSE OF THE SURVEY WAS TO ESTABLISH THE BOUNDARY OF LOTS 16 & 13. ALL MONUMENTS FOUND AND ESTABLISHED ALONG WITH THE MEASURED BEARING AND DISTANCES ARE SHOWN HEREIN.

SURVEY
 FOR
 ANNA STERR



LEGEND

- = SET 5/8" IR WITH PLASTIC CAP MARKED OR #932 & WA #22098 EXCEPT AS NOTED
- = FOUND MONUMENT AS NOTED
- = CALCULATED CORNER AS NOTED
- ⊠ = CALCULATED 1/4 COR AS NOTED
- ⊞ = CALCULATED SEC COR AS NOTED
- ⊞ = FOUND 1/4 COR AS NOTED
- ⊞ = FOUND SEC COR AS NOTED

FILED
 AUG 13, 1997
Richard A. All
 COUNTY SURVEYOR

REGISTERED
 PROFESSIONAL
 LAND SURVEYOR

OREGON
 JULY 17, 1970
 ANTHONY C. KLEIN
 932
 EXPIRES 6-30-99



Klein & Assoc.

LAND SURVEYING
 1109 Country Club Road
 Hood River, Oregon 97031
 Tele: (503)386-3322
 DATE SURVEYED: JUNE 97
 JOB NO.: 97035