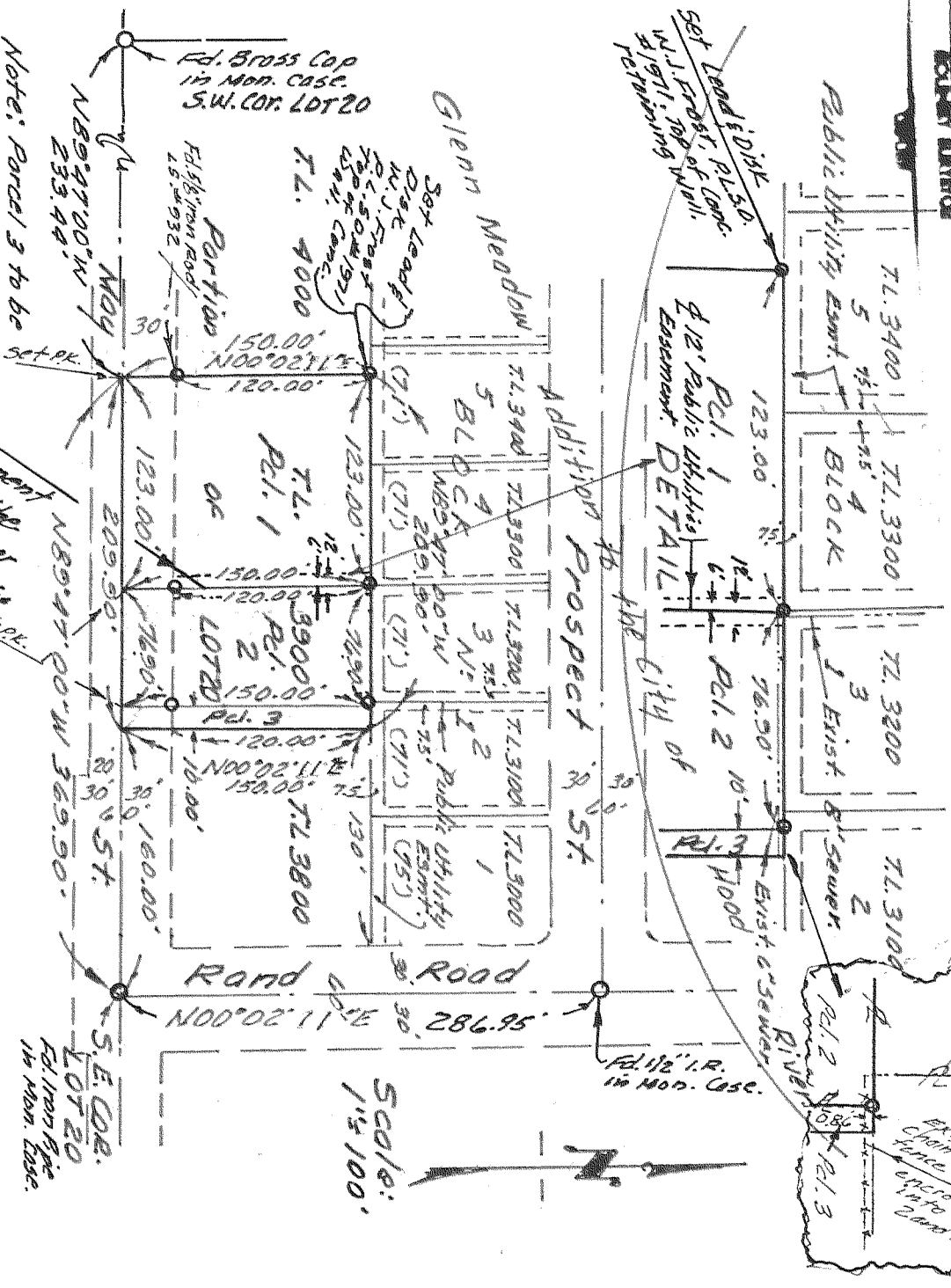


**JUN 18**  
*Rich L. O. Stahl*  
 COUNTY CLERK



Note: Parcel 3 to be combined with Tax Lot 3800, Assessor Map 3N10E 35 8A8, Hood River, Oregon.

1/4 of 12A Easement Dedicated to the City of Hood River for Public Utilities purposes.

Boundary Survey for Property Line Adjustments 97-29 and 97-30, being Tax Lots 3800, 3900 and 4000, Assessor Map 3N10E 35 8B, Hood River, Oregon.

Note: Set 1/4" Iron Pipe with Brass Disk Stamped with Frost PL 50. #1971 of all points shown thus - O -, unless otherwise noted.

**REGISTERED PROFESSIONAL LAND SURVEYOR**  
*William J. Frost*  
 OREGON  
 JANUARY 19, 1982  
 WILLIAM J. FROST  
 1971



**Frost's Land, Surveying & Title Company**  
 304 Pine St., Hood River, Oregon  
 97031 Phone: (541) 382-1542

MAY 30, 1997

1"=100'

FB 15-36

Job N: 193

# 97031