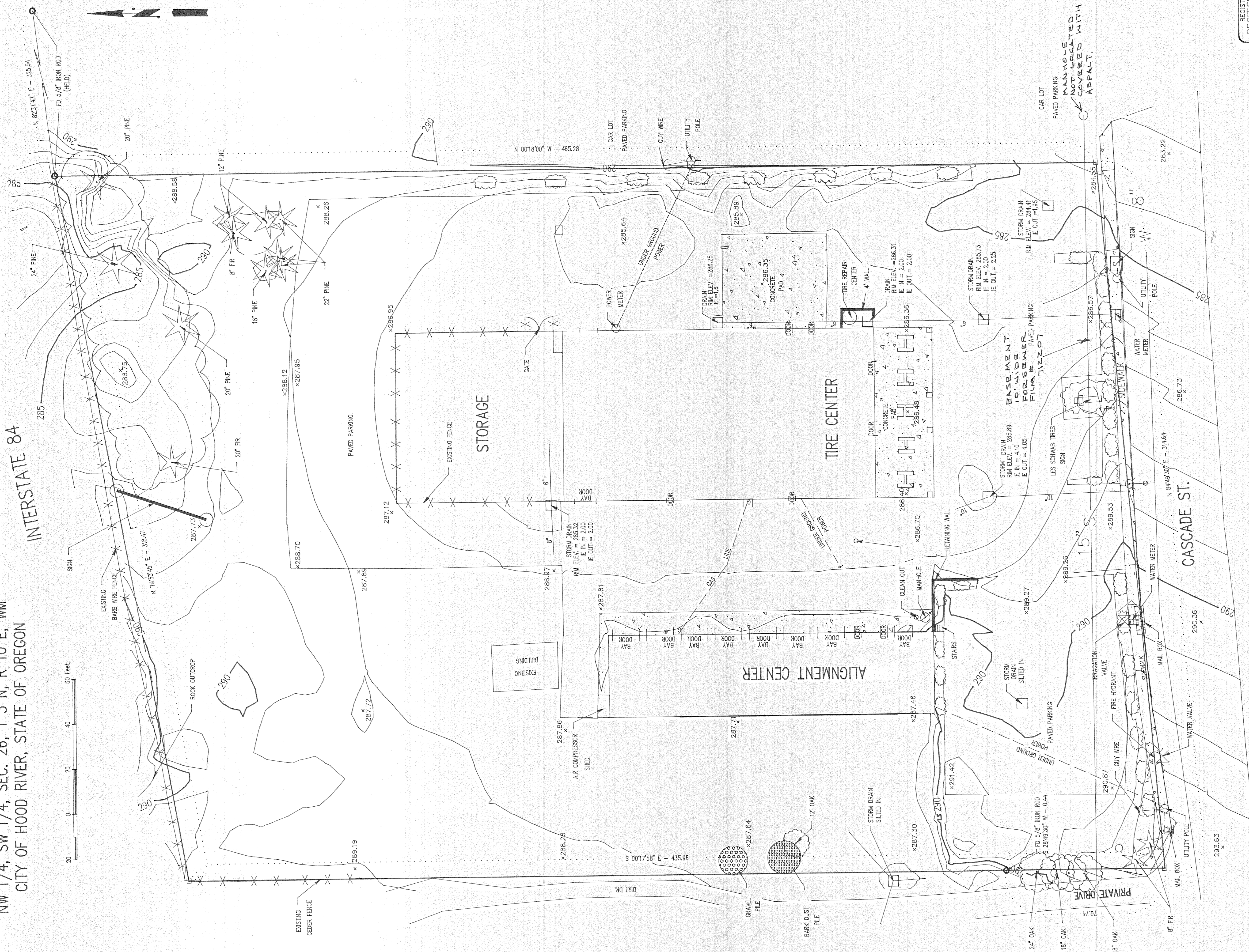


TOPOGRAPHIC SURVEY IN
 NW 1/4, SW 1/4, SEC. 26, T 3 N, R 10 E, WM
 CITY OF HOOD RIVER, STATE OF OREGON

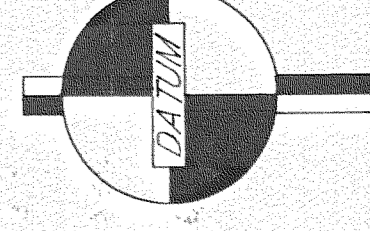
INTERSTATE 84

0 20 40 60 Feet



- LEGEND**
- = SET 5/8" IR WITH PLASTIC CAP MARKED OR #32 & WA #22098 EXCEPT AS NOTED
 - = FOUND MONUMENT AS NOTED
 - = CALCULATED CORNER AS NOTED
 - = SHRUB
 - = OAK TREE
 - ★ = FIR TREE
 - = CLEAN OUT
 - = STORM DRAIN
 - = MANHOLE
 - ⊞ = WATER METER
 - ⊞ = FIRE HYDRANT
 - M = WATER VALVE
 - = UTILITY POLE
 - ← = GUY WIRE

REFERENCE SURVEYS
 SURVEY BY D.C. SURVING
 CS #77037
 SURVEY BY TENNESON ENG.
 CS #89098



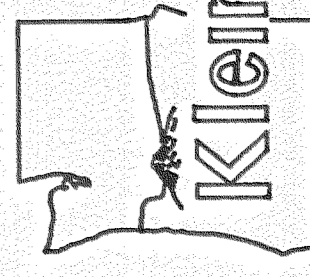
TOPOGRAPHIC SURVEY
 FOR
 LES SCHWAB TIRE CENTER

FILED

MAY 23, 1997
Richard J. Small
 COUNTY CLERK

CITY OF HOOD RIVER

REGISTERED
 PROFESSIONAL
 LAND SURVEYOR
 OREGON
 JULY 13, 1979
 ANTHONY C. KLEIN
 952



Klein & Assoc.
 LAND SURVEYING
 1109 Country Club Road
 Hood River, Oregon 97031
 Telex: C503286-3322
 DATE SURVEYED: MAR. 1987
 JOB NO.: 9706