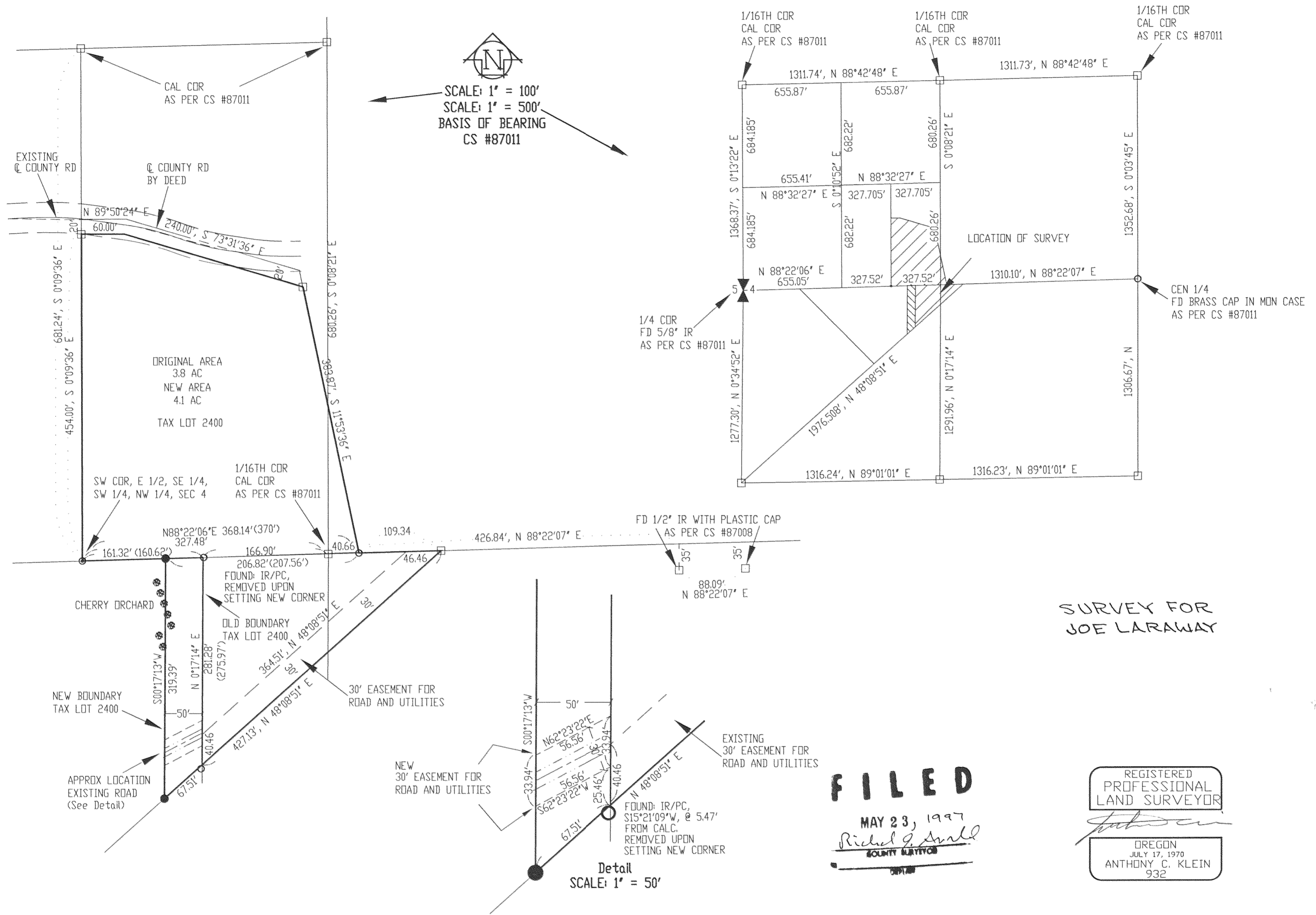


# BOUNDARY ADJUSTMENT IN THE W 1/2 OF SEC 4, T 2 N, R 10 E, WM COUNTY OF HOOD RIVER, STATE OF OREGON



### NARRATIVE OF SURVEY

THE PURPOSE OF THE SURVEY WAS TO ADJUST THE MOST SOUTHERLY WEST BOUNDARY OF THE ABOVE PARCEL, AND PROVIDE FOR A 30' EASEMENT FOR ROAD AND UTILITIES ACROSS THE ADJUSTED PORTION OF PROPERTY. PREVIOUS SURVEYS BY ME SET THE CORNERS OF THE ORIGINAL PARCEL IN AUGUST OF 1990, AND ADJUSTED THE SOUTH BOUNDARY IN FEBRUARY OF 1992. PREVIOUSLY SET CORNERS WERE TIED AS INDICATED, AND THE MOST SOUTHERLY CORNER WAS FOUND OUT OF POSITION. HELD THE PLATTED DISTANCE BETWEEN FOUND MONUMENTS AND THE PLAT ANGLE TO ESTABLISH THE NEW SOUTH-SOUTHWEST CORNER ALONG THE LINE FROM THE SOUTH 1/16TH SECTION 4 AND 5, AND THE CENTER WEST 1/16TH CORNER. OLD IRON RODS MARKING THE LINE TO BE ADJUSTED WERE REMOVED. ALL MONUMENTS FOUND AND SET ALONG WITH THE MEASURED BEARINGS AND DISTANCES ARE SHOWN HEREIN.

### LEGEND

- = FD MON AS NOTED
- = SET 5/8" IR WITH PLASTIC CAP MARKED DR 932 & WA 22098
- = CALC. COR
- ( ) = DEED or PLAT CALL

### REFERENCE SURVEYS

DLC SURVEYING CS #87011 & #87008  
KLEIN & ASSOC. FEB. 1992

**FILED**

MAY 23, 1997  
*Richard G. Small*  
COUNTY CLERK

REGISTERED  
PROFESSIONAL  
LAND SURVEYOR

*Anthony C. Klein*

OREGON  
JULY 17, 1970  
ANTHONY C. KLEIN  
932

**Klein & Assoc**

LAND SURVEYING  
1109 Country Club Road  
Hood River, Oregon 97031  
Tele: (541) 386-3322  
DATE SURVEYED: MAY 1997  
JOB NO: 97012