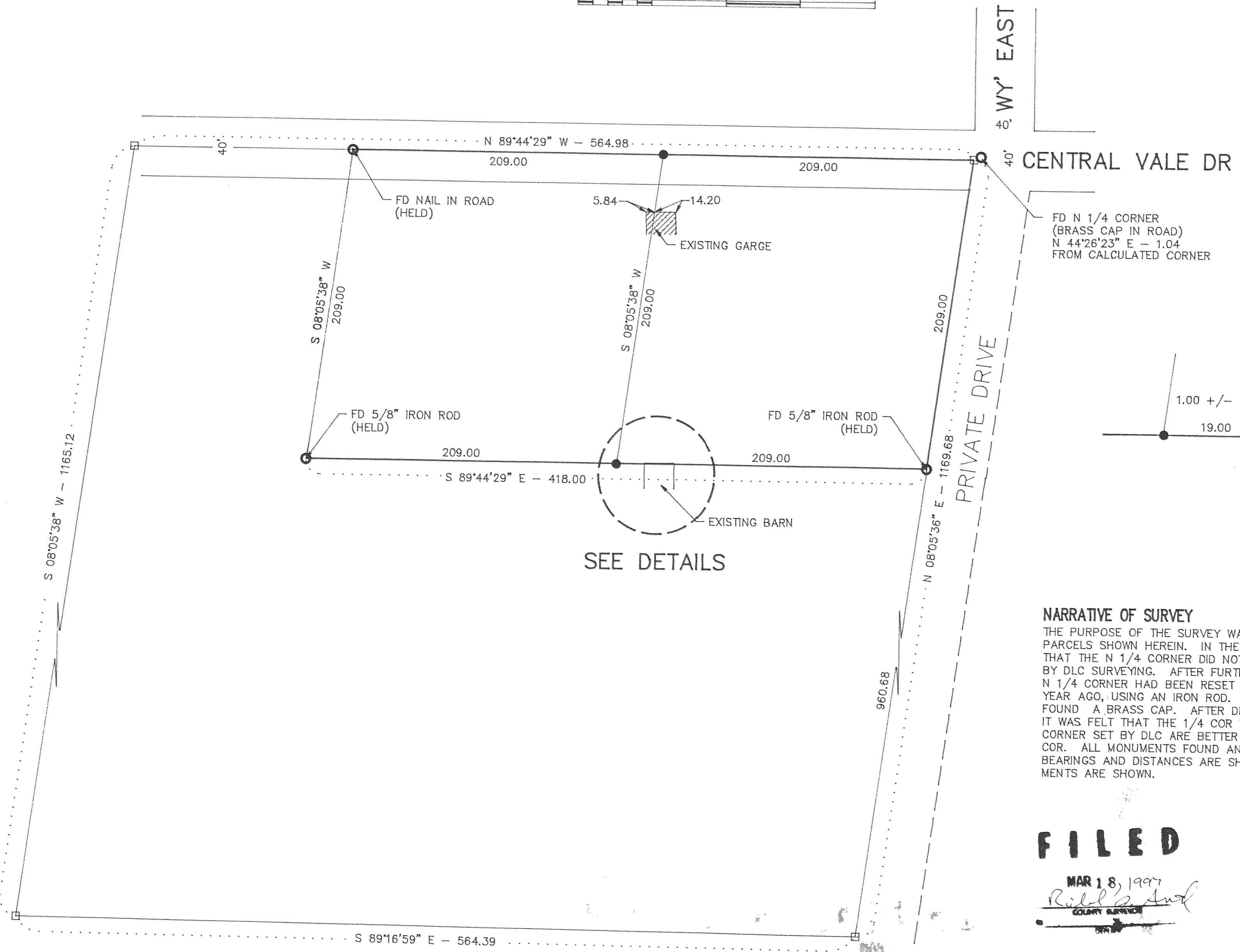
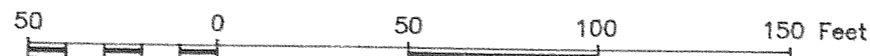
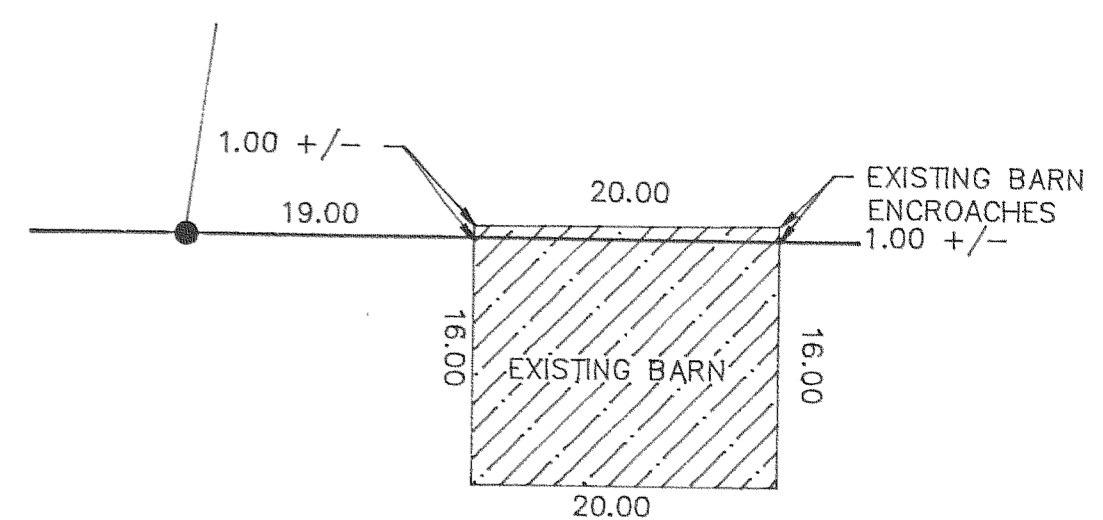


SURVEY IN  
NE 1/4, NW 1/4, SEC. 3, T 1 N, R 10 E, WM  
HOOD RIVER COUNTY, STATE OF OREGON



**LEGEND**

- = SET 5/8" IR WITH PLASTIC CAP MARKED OR #932 & WA #22098 EXCEPT AS NOTED
- = FOUND MONUMENT AS NOTED
- = CALCULATED CORNER AS NOTED
- ⊠ = CALCULATED 1/4 COR AS NOTED
- ⊞ = CALCULATED SEC COR AS NOTED
- ⊞ = FOUND 1/4 COR AS NOTED
- ⊞ = FOUND SEC COR AS NOTED



**DETAILS**

**NARRATIVE OF SURVEY**

THE PURPOSE OF THE SURVEY WAS TO LOCATE THE BOUNDARY OF THE PARCELS SHOWN HEREIN. IN THE COURSE OF THE SURVEY IT WAS FOUND THAT THE N 1/4 CORNER DID NOT AGREE WITH THE PREVIOUS SET CORNERS BY DLC SURVEYING. AFTER FURTHER RESEARCH IT WAS FOUND THAT THE N 1/4 CORNER HAD BEEN RESET BY THE COUNTY SURVEYOR'S ABOUT 1 YEAR AGO, USING AN IRON ROD. THE PREVIOUS SURVEY BY DLC HAD FOUND A BRASS CAP. AFTER DISCUSSING WITH THE COUNTY SURVEYOR IT WAS FELT THAT THE 1/4 COR MAY HAVE BEEN SET WRONG AND THE CORNER SET BY DLC ARE BETTER EVIDENCE TO THE POSITION OF THE 1/4 COR. ALL MONUMENTS FOUND AND ESTABLISHED ALONG WITH THE MESURED BEARINGS AND DISTANCES ARE SHOWN HEREIN. ALSO 2 BLDG. ENROACHMENTS ARE SHOWN.

**FILED**

MAR 18, 1997  
*Richard And*  
COUNTY SURVEYOR

REGISTERED  
PROFESSIONAL  
LAND SURVEYOR

OREGON  
JULY 17, 1970  
ANTHONY C. KLEIN  
932

EXPIRES 6-30-97



**Klein & Assoc.**

LAND SURVEYING  
1109 Country Club Road  
Hood River, Oregon 97031  
Tele: (503)386-3322  
DATE SURVEYED: DEC. 96  
JOB NO.: 98066

**REFERENCE SURVEYS**  
SURVEY BY DLC SURVEYING, DATED JUNE 5, 1980  
CS # 80042

**BASIS OF BEARING**  
AS PER CS # 80042

**SURVEY FOR  
CHARLES & VICKIE PETERSON**