

1/4 CORNER  
Found - Brass Cap

15

22

22

22

22

22

22

22

22

22

22

22

22

22

22

22

22

22

22

22

22

22

22

22

22

22

22

22

22

22

22

22

22

22

22

22

22

22

22

22

22

22

22

22

22

22

22

22

22

22

22

22

22

22

22

1/4 CORNER  
Found - Brass Cap

27

27

27

27

27

27

27

27

27

27

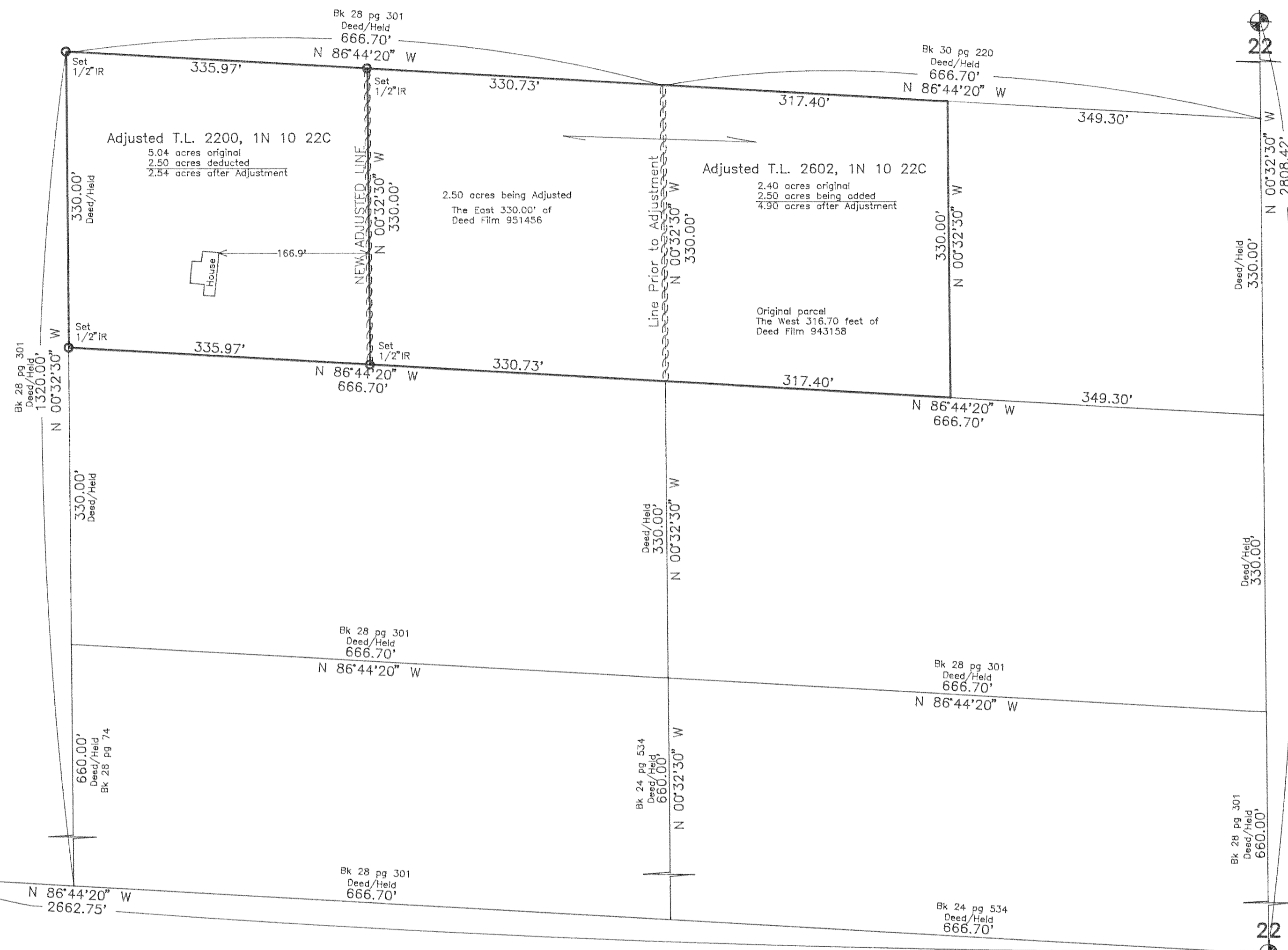
27

27

27

27

27



SECTION CORNER  
21 22  
28 27

Basis of bearing and survey control as per D.L.C. C.S. 93079.

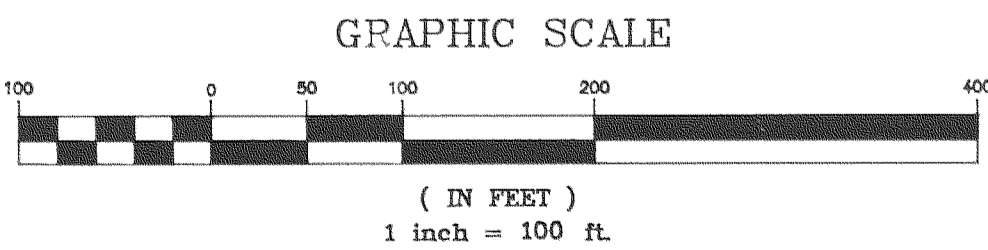
NOTE: Iron rod (IR) monuments set have yellow, plastic cap stamped "LS 1028" affixed.

NARRATIVE: The purpose of this survey was for the LOT LINE ADJUSTMENT between existing Tax Lot 2200 and 2602 of 1N 10 22C as shown.

**FILED**

APR 2, 1996  
*Rick A. Bell*  
COUNTY SURVEYOR

"SURVEY"  
FOR — Frank Hughes and Joe Kochis  
LOCATION — LOT LINE ADJUSTMENT  
as located in the Southwest 1/4 of  
Section 22, Township 1 North, Range  
10 East, Willamette Meridian —  
HOOD RIVER COUNTY, OREGON



REGISTERED  
PROFESSIONAL  
LAND SURVEYOR

*Danny L. Cron*  
OREGON  
AUGUST 22, 1975  
DANNY L. CRON  
1028

Mar 23, 1996

DLC SURVEYING  
ESTABLISHED 1976  
  
Dan Cron  
5894 Trout Creek Road  
Parkdale, Oregon 97041  
(541) 352-6874