

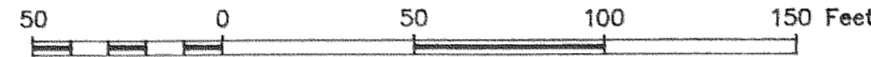
JUL 6 3 25 PM '95

PARTITION PLAT NO. 95-26

Instrument received on the 6<sup>th</sup> day of July, 1995 at 3:25 P.M.

Hood River County Director of Records and Assessments

# PARTITION IN SE 1/4, SW 1/4, SEC. 35, T 3 N, R 10 E, WM COUNTY OF HOOD RIVER, STATE OF OREGON



**SURVEYS CERTIFICATE**  
I, Anthony C Klein, being first duly sworn, depose and say that I have correctly surveyed and marked with proper monuments the lands represented on this partition plat. Boundaries being described in Parcel 2 of partition plat No. 9422 dated November 29, 1994 Hood River county records, to Lorn Magnusen and E. Marjorie Magnusen.

*Anthony C. Klein*  
ANTHONY C. KLEIN PLS 932

### ACKNOWLEDGEMENTS

We the owners of the land shown herein, hereby declare that this division of land has been made with our free consent and in accordance with our desires.

*Lorn Magnusen 7-5-95*  
Lorn Magnusen Date  
*E. Marjorie Magnusen 7/5/95*  
E. Marjorie Magnusen Date

STATE OF OREGON }  
COUNTY OF Hood River } ss

Subscribed and sworn to before me on this 5 day of July, 1995  
by *Dwight M. Covant*

Notary Public for the State of Oregon  
My commission expires 4-23-99

### APPROVALS

I hereby certify that all taxes and assessment due hereon have been fully paid as required by law.

*Robert D. Nelson 7/1*  
Hood River County Director of Budget and Finance.

I hereby certify this partition was examined and approved as of this 6 day of July, 1995

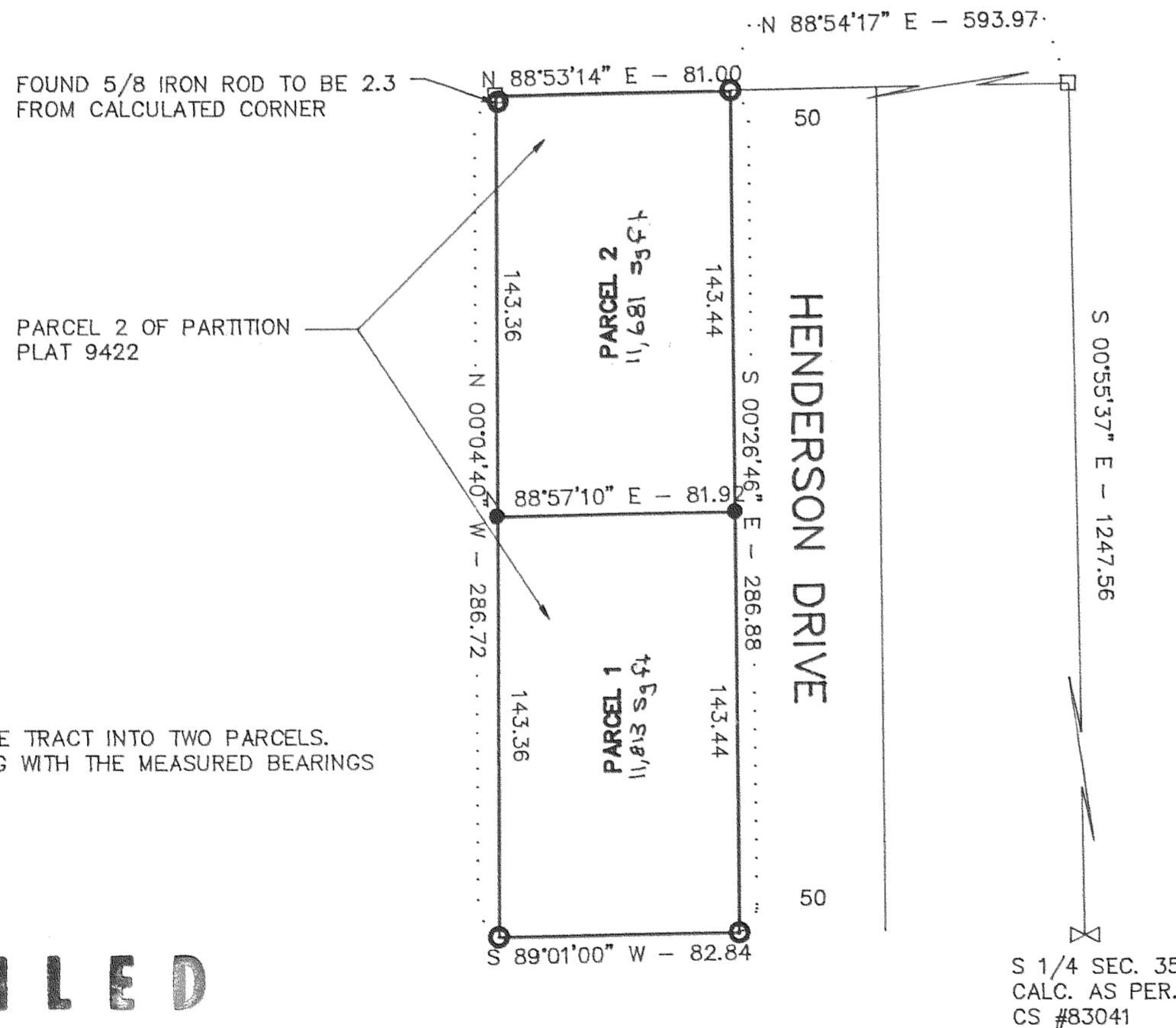
*Richard G. Arnold*  
Hood River County Surveyor

I hereby certify this partition was examined and approved as of this 6th day of JULY, 1995

*Eric Thomas Wiley for*  
Hood River County Planning Director

### REFERENCE SURVEYS

SURVEY BY TERRA SURVEYING, MAY 1983  
CS #83041  
SURVEY BY DLC SURVEYING, OCT. 1994  
CS #95036



### NARRATIVE OF SURVEY

THE PURPOSE OF THE SURVEY WAS TO DIVIDE THE TRACT INTO TWO PARCELS. ALL MONUMENTS FOUND AND ESTABLISHED, ALONG WITH THE MEASURED BEARINGS AND DISTANCES ARE SHOWN HEREIN.

### LEGEND

- = SET 5/8" IR WITH PLASTIC CAP MARKED OR #932 & WA #22098 EXCEPT AS NOTED
- = FOUND MONUMENT AS NOTED
- = CALCULATED CORNER AS NOTED
- ◇ = CALCULATED 1/4 COR AS NOTED
- ⊠ = CALCULATED SEC COR AS NOTED
- ⊞ = FOUND 1/4 COR AS NOTED
- ⊠ = FOUND SEC COR AS NOTED

**FILED**

JUL 19, 1995

*Richard G. Arnold*  
COUNTY SURVEYOR

### WATER RIGHT STATEMENT

WATER RIGHTS ARE SUBJECT SUBJECT TO THE STATUTORY POWERS OF FARMERS IRRIGATION DISTRICT AND ICE FOUNTAIN WATER DISTRICT. NO OTHER WATER RIGHTS EXIST.

JUL 6 1995

Certified to be a true and correct copy of the ORIGINAL  
Dept. of Records & Assessment  
by *Richard G. Arnold* Deputy

## SURVEY FOR LORN & MARJORIE MAGNUSEN

REGISTERED  
PROFESSIONAL  
LAND SURVEYOR

OREGON  
JULY 17, 1970  
ANTHONY C. KLEIN  
932



**Klein & Assoc.**

LAND SURVEYING  
1109 Country Club Road  
Hood River, Oregon 97031  
Tele: (503)386-3322  
DATE SURVEYED: JUNE 1995  
JOB NO.: 95027