

MAY 25 1995

Certified to be a true and correct copy of the ORIGINAL
Dept. of Records & Assessment
by *William J. Frost* Deputy

PARTITION PLAT

for Tentative Map of Minor Partition Approved
May 27, 1994, Being Tax Lot 300, Assessor Map
N-3N 10E 35 BB. in the City of Hood River,
Hood River County, Oregon.

Prepared for:
Charles F. Beardsley

Narrative:

The purpose of this plat is to file for the record the partitioning of TAX LOT 300, Assessor Map N-3N 10E 35 BB, being a portion of the N.W. 1/4 of Section 35, Township 3 North, Range 10 East, Willamette Meridian, in the City of Hood River, Hood River County, Oregon. Said tax lot also being a portion of LOT 19, Adams Paradise Acreage.
Also to file for the record the location and character of all monuments found or established, as noted hereon, which set forth the boundary limits of the parcels shown hereon.

The sanitary Sewer Disposal System is available to each parcel, shown hereon, from the City of Hood River.

Basis of Bearing:

The centerline of MAY STREET, as shown on a plat of Glenn Meadows Addition to the City of Hood River, Approved April 29, 1977, Being 58° 47' 00" E.

Monument Notes:

1. Found monuments, as noted hereon, at all points shown thus —
2. Set 1" x 30" iron pipe bearing brass disk stamped P.L. 50° 1971, at all points shown thus —, unless otherwise noted.
3. Set concrete nail at all points shown thus —, unless otherwise noted.

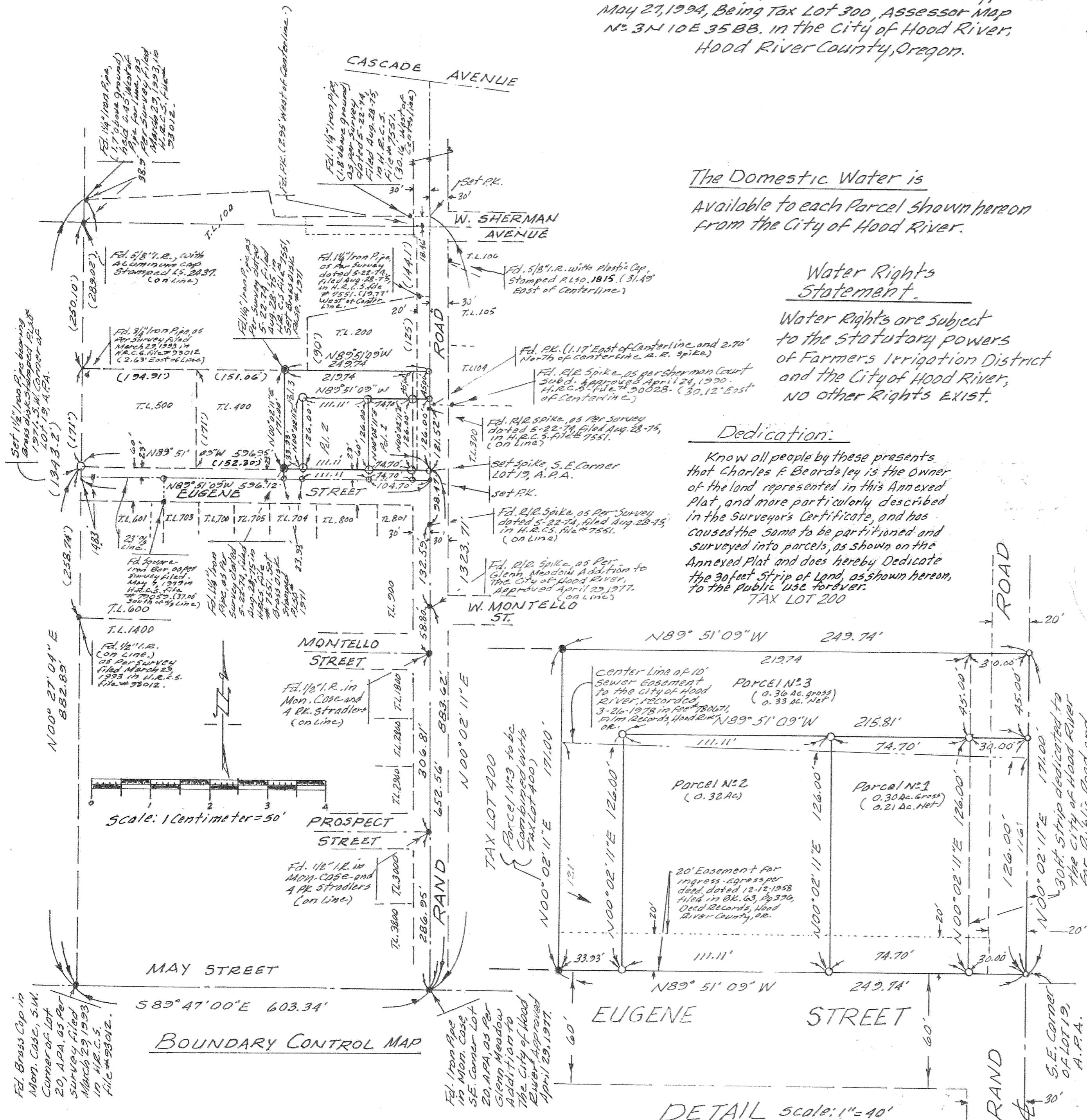
The Domestic Water is Available to each Parcel shown hereon from the City of Hood River.

Water Rights Statement.

Water Rights are subject to the statutory powers of Farmers Irrigation District and the City of Hood River, no other Rights exist.

Dedication:

Know all people by these presents that Charles F. Beardsley is the owner of the land represented in this Annexed Plat, and more particularly described in the Surveyor's Certificate, and has caused the same to be partitioned and surveyed into parcels, as shown on the Annexed Plat and does hereby Dedicate the 30 feet Strip of Land, as shown hereon, to the public use forever.



FILED

JUN 2, 1995
Richard G. Avell
COUNTY CLERK

REGISTERED PROFESSIONAL LAND SURVEYOR

William J. Frost
OREGON
JANUARY 12, 1982
WILLIAM J. FROST
1971



Frost's Land, Surveying & Cattle Company
304 Pine St. 386-1342
5-12-95 Hood River, OR. 106#170

DUPLICATE

FILED
RECORDS AND ASSESSMENT
HOOD RIVER CO.

MAY 25 11 02 AM '95

Partition Plat # 9516

Instrument received on the 25 day of
MAY, 1995 at 11:02 AM.

Hood River County Director of Records
and Assessments

SURVEYOR'S CERTIFICATE

William J. Frost
being first duly sworn, depose and say that I have correctly surveyed and marked with proper monuments the lands represented on this Partition Plat, the boundaries being described in instruments:
940708, dated 3-1-94
Hood River County Deed Records to
Charles F. Beardsley

ADJOINERS:
720900, dated 5-25-72
Hood River County Deed Records to
Charles F. and Barbara J. Beardsley

940701, dated 3-1-94
Hood River County Deed Records to
Barbara J. Beardsley

ACKNOWLEDGEMENTS

We the owner(s) of the land shown herein, hereby declare that this division of land has been made with our free consent and in accordance with our desires.

Charles F. Beardsley 5/10/95
OWNER DATE

STATE OF Oregon
COUNTY OF Hood River
Subscribed and sworn to before me on this
18 day of May, 1995

by Juan C. Chapman
OFFICIAL SEAL
JOAN C. CHAPMAN
NOTARY PUBLIC - OREGON
COMMISSION NO. 62828
MY COMMISSION EXPIRES 12-31-1997
Notary Public for the State of Or.
My commission expires 7-24-95

APPROVALS

I hereby certify that all taxes and assessments due hereon have been fully paid as required by law.
Daniel Sny Chammess, CPA
Hood River County Director of Budget and Finance

I hereby certify this partition was examined and approved as of this 18 day of May, 1995
Richard G. Avell
Hood River County Surveyor

I hereby certify this partition was examined and approved as of this 25 day of MAY, 1995.
Planning File Number 94-17
Cynthia A. Walburg
Hood River CITY Planning Director

95041