

# PARTITION IN SE 1/4, SEC 22, T 2 N, R 10 E, WM COUNTY OF HOOD RIVER, STATE OF OREGON

FILED  
RECORDS AND ASSESSMENT  
HOOD RIVER CO.

MAR 2 2 42 PM '95



PARTITION PLAT NO. 9509

Instrument received on the 2nd day of March, 1995 at 2:42 P.M.

Hood River County Director of Records  
and Assessments

### SURVEYS CERTIFICATE

I, Anthony C. Klein, being first duly sworn, depose and say that I have correctly surveyed and marked with proper monuments the lands represented on this Partition Plat, the boundaries being described in Book 52, page 3, dated February 11, 1954, Hood River County deed records to John A. Weber & Martha A. Weber, EXCEPTING THEREFROM those deeds recorded in Book 56, page 201, instrument No. 680089, and instrument No 662274.

*Anthony C. Klein*  
ANTHONY C. KLEIN PLS 932

### ACKNOWLEDGEMENTS

We the owners of the land shown herein, hereby declare that this division of land has been made with our free consent and in accordance with our desires.

*John A. Weber* 3/2/95 Date  
*Martha A. Weber* 3/2/95 Date  
John A. Weber Date  
Martha A. Weber Date

STATE OF OREGON  
COUNTY OF Hood River } ss

Subscribed and sworn to before me on this 2nd day of March, 1995  
by Debra A. Weathers

Notary Public for the State of Oregon  
My commission expires 3/27/98  
OFFICIAL SEAL  
*Debra A. Weathers*  
NOTARY PUBLIC, OREGON  
COMMISSION NO. 033286  
MY COMMISSION EXPIRES MAR. 27, 1998

### APPROVALS

I hereby certify that all taxes and assessment due hereon have been fully paid as required by law.

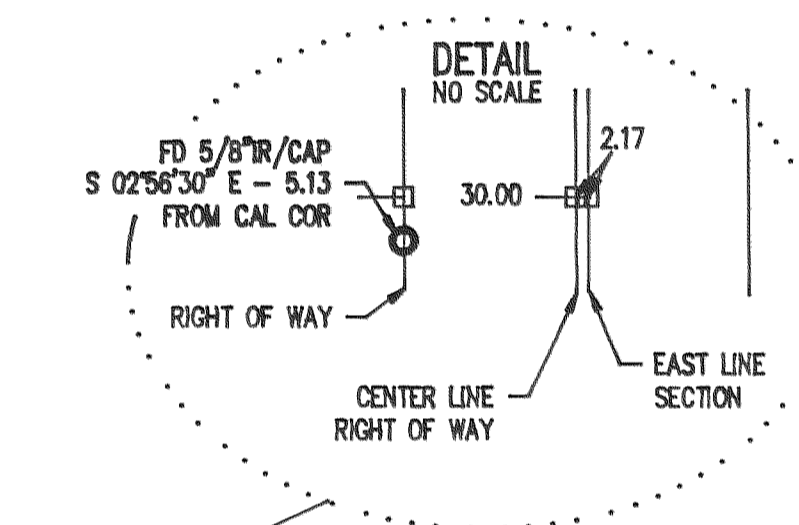
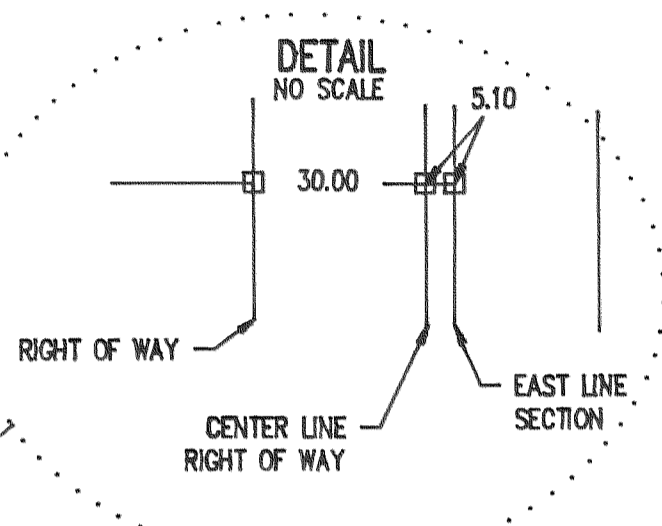
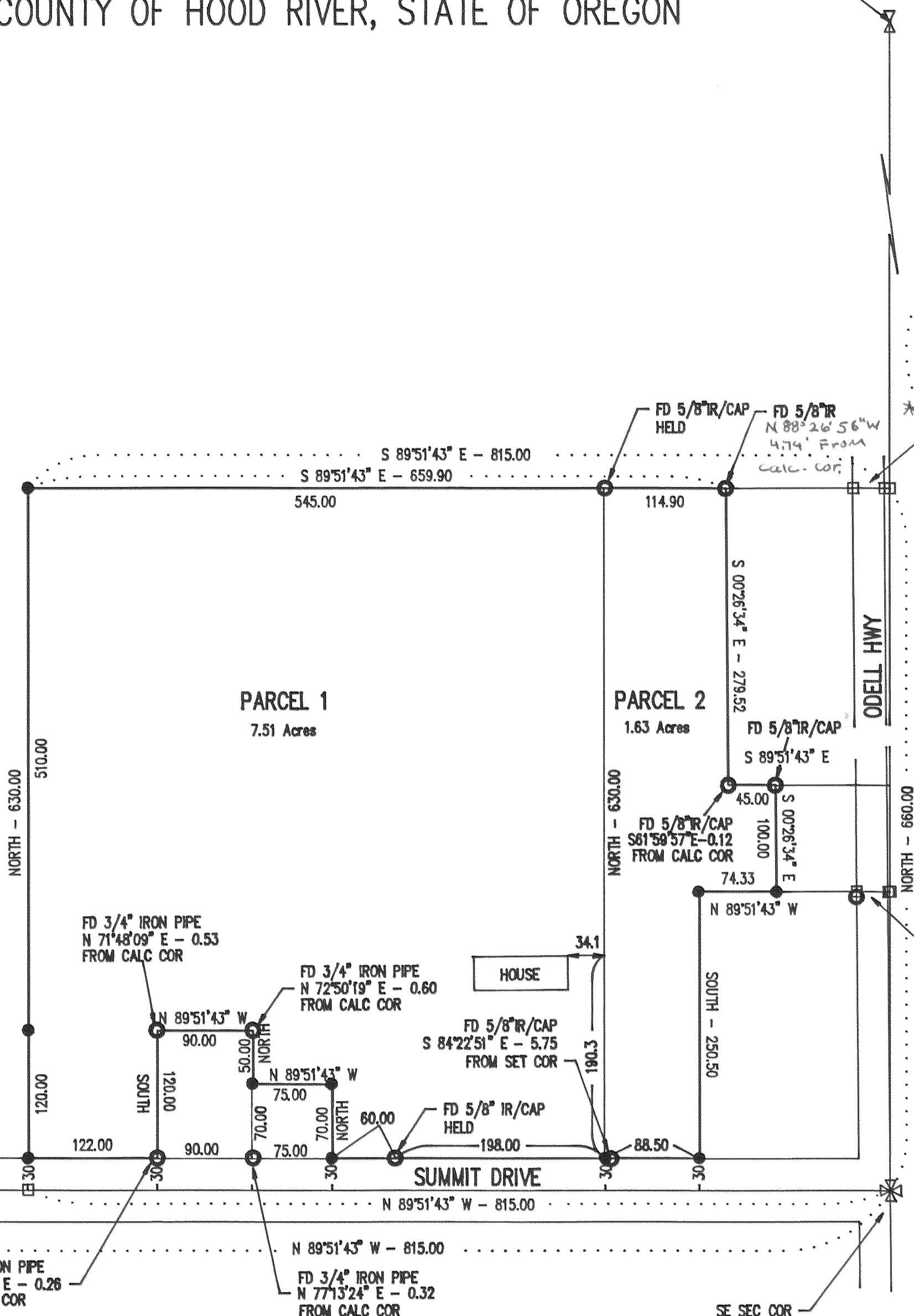
*Daniel Guy Chambers, CPA*  
Hood River County Director of Budget and Finance.

I hereby certify this partition was examined and approved as of this 3 day of March, 1995

*Richard G. Adel*  
Hood River County Surveyor

Minor Partition #93-498  
I hereby certify this partition was examined and approved as of this 2 day of MARCH, 1995

*Wm. W. ...*  
Hood River County Planning Director



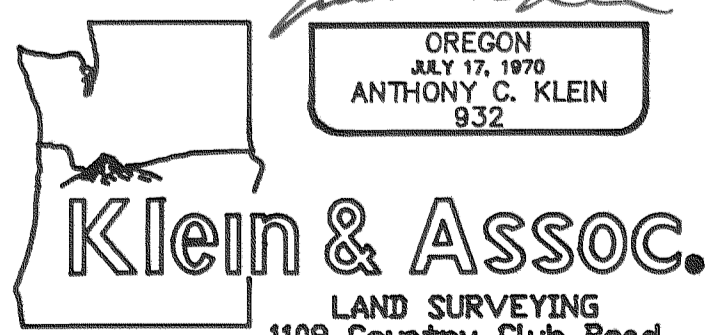
**FILED**  
MAR 3, 1995  
*Richard G. Adel*

- ### LEGEND
- = SET 5/8" IR WITH PLASTIC CAP MARKED OR #932 & WA #22098 EXCEPT AS NOTED
  - = FOUND MONUMENT AS NOTED
  - = CALCULATED CORNER AS PER CS #85009
  - ⊗ = CALCULATED 1/4 COR AS PER CS #85009
  - ⊕ = CALCULATED SEC COR AS PER CS #85009
  - ⊗ = FOUND 1/4 COR AS NOTED
  - ⊕ = FOUND SEC COR AS NOTED

**WATER RIGHT STATEMENT**  
WATER RIGHTS ARE SUBJECT SUBJECT TO THE STATUTORY POWERS OF EAST FORK IRRIGATION DISTRICT AND CRYSTAL SPRINGS WATER DISTRICT. NO OTHER WATER RIGHTS EXIST.

REGISTERED  
PROFESSIONAL  
LAND SURVEYOR

OREGON  
JULY 17, 1970  
ANTHONY C. KLEIN  
932



LAND SURVEYING  
1109 Country Club Road  
Hood River, Oregon 97031  
Tele: (503)386-3322  
DATE SURVEYED: FEB 1995  
JOB NO.: 95003

## PARTITION FOR JOHN WEBER

### NARRATIVE OF SURVEY

THE PURPOSE OF THE SURVEY WAS TO DIVIDE THE TRACT INTO TWO PARCELS. ALL MONUMENTS FOUND AND ESTABLISHED, ALONG WITH THE MEASURED BEARINGS AND DISTANCES ARE SHOWN HEREIN.

### REFERENCE SURVEYS

SURVEY BY KLEIN & ASSOC., FEB 1985  
CS #85009

\* see affidavit  
of correction  
Inst. # 951695