

①
CAP IS STAMPED
T1N 1/4 R9E
S34 | S35
1994
PLS 1815
TERRA SURVEYING

MONUMENTATION FOUND.

FOUND STONE MOUND WITH OLD ORANGE PAINT.
FOUND OLD TREE TAG BUT NO 1 1/2" IRON PIPE.
COUNTY SURVEYOR TO SET BEARING TREES FOR CORNER

WE SET
A 2 1/2" BRASS CAP ON A 30" GALVANIZED PIPE
AND PLACED A STONE MOUND AROUND THE SET MONUMENT.
THE CAP WAS STAMPED AS SHOWN.

③
CAP IS STAMPED
TERRA SURVEYING
T1S 1/4 R9E
S33 | S34
1994
PLS 1815

MONUMENTATION FOUND.

NONE
WE MARKED
10" DOUGLAS FIR BEARING N 18° W @ 2.8' SCRIBED S33 1/4 BT"
12" DOUGLAS FIR BEARING S 25° E @ 8' SCRIBED S34 1/4 BT"
PLACED STONE MOUND AROUND THE MONUMENT.
THE TWO TREES SELECTED WERE THE BEST AVAILABLE NEARBY.
THE MONUMENT IS A 2 1/2" BRASS CAP ON A 30" GALVANIZED PIPE.
BEARING TREE TAGS WERE PLACED ON EACH TREE WITH A "PLS 1815"
BRASS WASHER, AND A 6" RED PAINTED BAND AROUND EACH SCRIBED
TREE. THE MONUMENT HAS A 6', 1/2" ROUND, WHITE, POST NEXT TO THE CORNER.

②

MONUMENTATION FOUND.

FOUND 5/8" IRON ROD 5" HIGH NEXT TO A GREEN METAL FENCE
POST WITH A LONGVIEW FIBRE TAG FOR SECTION 34. ONE TREE
TAG WAS N 80° W AT 6' AND THE OTHER WAS A CHAMPION TIMBERLANDS
TAG, NORTH 200°, DATED 9/7/1977.

NO CAP WAS FOUND ON THE IRON ROD.
THE COUNTY SURVEYOR IS GOING TO RESET THE CORNER AS IT
WAS FOUND TO HAVE BEEN SET IN ERROR DURING THE C.S. SURVEY No. 7658.

④
CAP IS STAMPED
SC
T1N R9E
S33 S34
1983
PLS 1028

MONUMENTATION FOUND.

THE MONUMENT IS AN ALUMINUM CAP PLACED ON A STANDARD
ALUMINUM PIPE. CLEARED BRUSH & SET A 6' HIGH, ROUND,
WHITE POST NEAR THE MONUMENT.
REBUILT MOUND OF STONE.
8" NOBLE FIR, N 30° W @ 26.4', SCRIBING VISIBLE, TREE HEALTHY.
CLEARED BRUSH.
5" DOUGLAS FIR, N 28° E @ 35.8', SCRIBING VISIBLE, TREE HEALTHY.
CLEARED BRUSH.
FOUND FOREST SERVICE TREE TAG ON A 20" FIR, S 7° E @ 9.35'.

⑤

MONUMENTATION FOUND.

FOUND MONUMENT AND BEARING TREES AS DESCRIBED BY
COUNTY SURVEY No. 83073. DID NOT FIELD TIE THIS
CORNER AS PLS 1028'S DISTANCE COMPARES FAVORABLY
WITH THE COUNTY SURVEY No. 7658.

LOCATION OF SURVEY:

THE SOUTHWEST QUARTER OF SECTION 34, TOWNSHIP 1 NORTH,
RANGE 8 EAST, W.M., HOOD RIVER COUNTY, OREGON.

REGISTERED
PROFESSIONAL
LAND SURVEYOR

Roy O. Gaylord
OREGON
JULY 13, 1979
ROY O. GAYLORD
1815

BASIS OF BEARING:

HOOD RIVER COUNTY SURVEY No. 7658

REFERENCES:

NEWTON CLARK APPROVED SURVEY OF 12/24/1884.
BPA TRANSMISSION LINE SURVEY THROUGH THE SECTION.
TENNESON ENGINEERING SURVEY DATED 4/29/1969.
HOOD RIVER COUNTY SURVEY OF THE SECTION, C.S. No. 7658.
C.S. No. 83073, SURVEY OF THE SECTION'S SOUTH LINE.

HOOD RIVER COUNTY SURVEYOR'S NUMBER _____

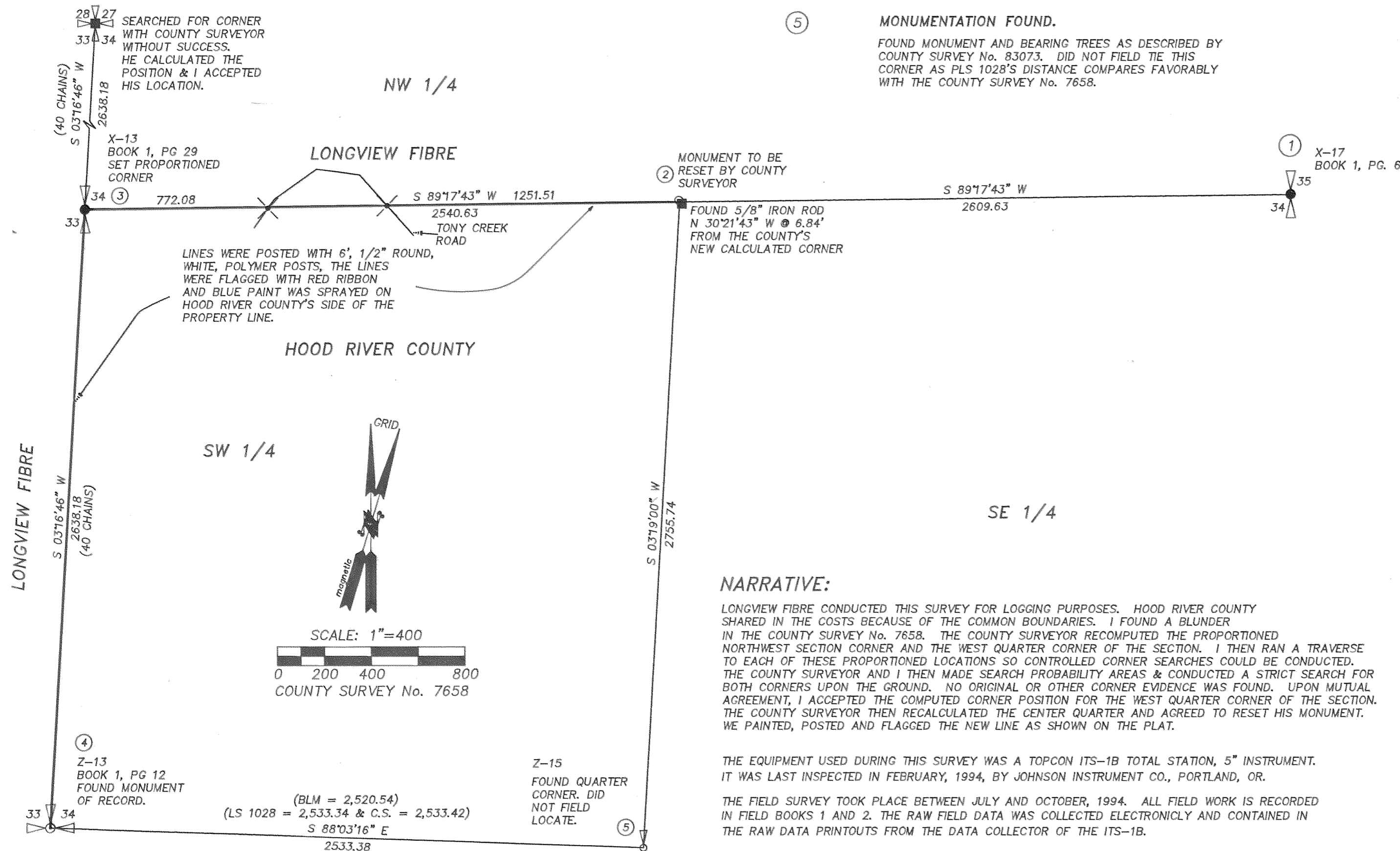
LEGEND:

- SET MONUMENT WITH BRASS CAP AS NOTED.
- CALCULATED CORNER, NOT SET OR FOUND.
- ⊕ FOUND MONUMENT. PLEASE SEE CORNER INFORMATION.
- ① CORNER NUMBER FOR REFERENCE
- ⊗ ROAD CROSSING SIGN
- () POSTED WITH 6', 1/2" ROUND, WHITE, POLYMER POSTS,
RED RIBBON WAS USED TO FLAG THE TRUE LINE &
BLUE PAINT WAS SPRAYED ON THE COUNTY TREES.
GLO PLAT CALL OR MEASURED BY OTHERS

TERRA SURVEYING

DATE: NOVEMBER, 1994
SCALE: 1" = 400
PROJECT: 9426

P.O. BOX 617
HOOD RIVER, OREGON 97031
PHONE & FAX: (503) 386-4531



NARRATIVE:

LONGVIEW FIBRE CONDUCTED THIS SURVEY FOR LOGGING PURPOSES. HOOD RIVER COUNTY
SHARED IN THE COSTS BECAUSE OF THE COMMON BOUNDARIES. I FOUND A BLUNDER
IN THE COUNTY SURVEY No. 7658. THE COUNTY SURVEYOR RECOMPUTED THE PROPORTIONED
NORTHWEST SECTION CORNER AND THE WEST QUARTER CORNER OF THE SECTION. I THEN RAN A TRAVERSE
TO EACH OF THESE PROPORTIONED LOCATIONS SO CONTROLLED CORNER SEARCHES COULD BE CONDUCTED.
THE COUNTY SURVEYOR AND I THEN MADE SEARCH PROBABILITY AREAS & CONDUCTED A STRICT SEARCH FOR
BOTH CORNERS UPON THE GROUND. NO ORIGINAL OR OTHER CORNER EVIDENCE WAS FOUND. UPON MUTUAL
AGREEMENT, I ACCEPTED THE COMPUTED CORNER POSITION FOR THE WEST QUARTER CORNER OF THE SECTION.
THE COUNTY SURVEYOR THEN RECALCULATED THE CENTER QUARTER AND AGREED TO RESET HIS MONUMENT.
WE PAINTED, POSTED AND FLAGGED THE NEW LINE AS SHOWN ON THE PLAT.

THE EQUIPMENT USED DURING THIS SURVEY WAS A TOPCON ITS-1B TOTAL STATION, 5" INSTRUMENT.
IT WAS LAST INSPECTED IN FEBRUARY, 1994, BY JOHNSON INSTRUMENT CO., PORTLAND, OR.

THE FIELD SURVEY TOOK PLACE BETWEEN JULY AND OCTOBER, 1994. ALL FIELD WORK IS RECORDED
IN FIELD BOOKS 1 AND 2. THE RAW FIELD DATA WAS COLLECTED ELECTRONICLY AND CONTAINED IN
THE RAW DATA PRINTOUTS FROM THE DATA COLLECTOR OF THE ITS-1B.

FILED

DEC 29, 1994
Ruthal G. Anll
COUNTY SURVEYOR

**CADASTRAL SURVEY
for**

LONGVIEW FIBRE CO. & HOOD RIVER COUNTY

#94140