

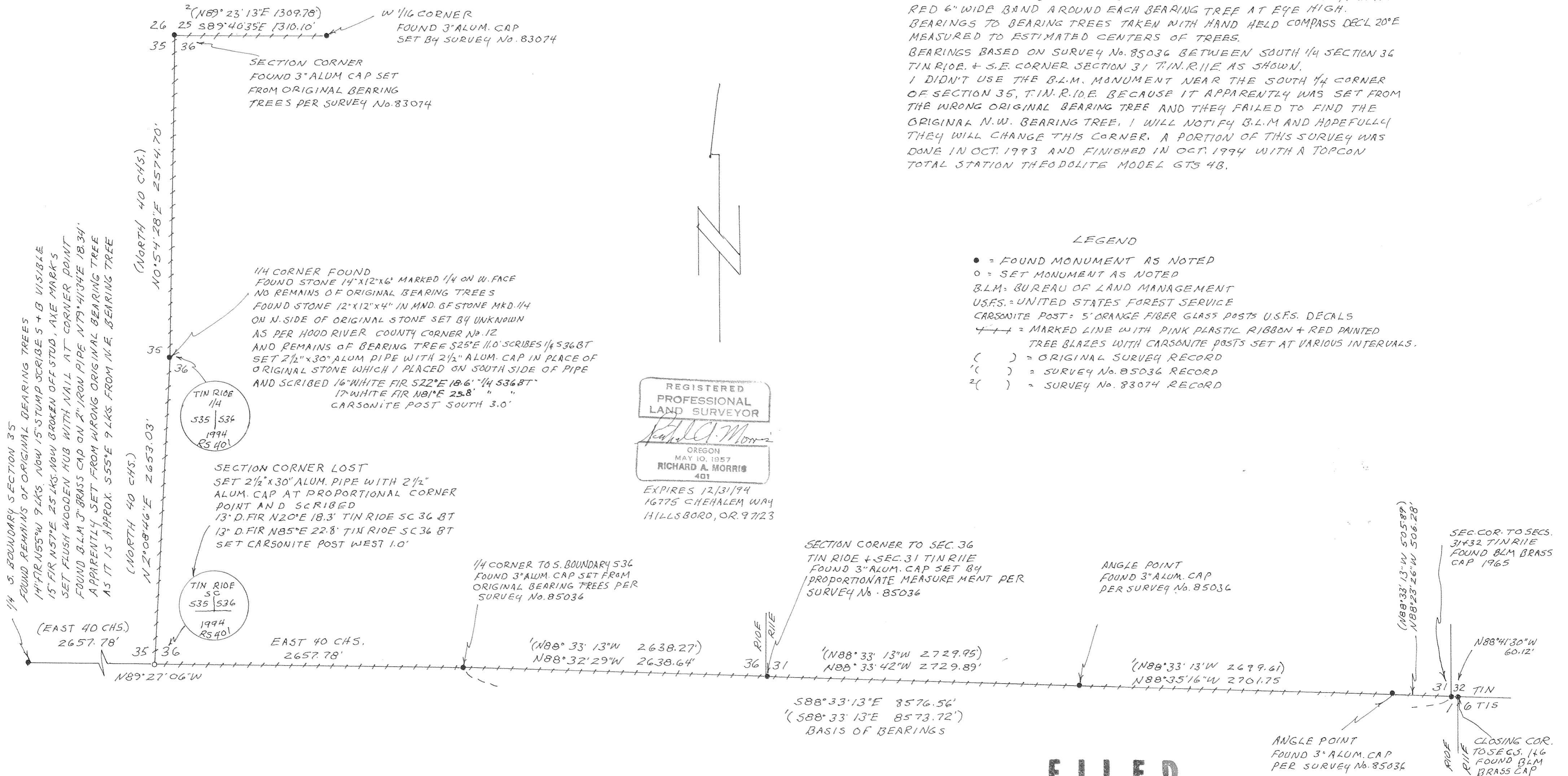
RECORD OF SURVEY FOR:
 RAYMOND SMITH +
 UNITED STATES FOREST SERVICE
 OF
 SOUTH + WEST LINE OF SECTION 36 T1N. R10E. W1M.
 + SOUTH LINE SECTION 31 T1N. R11E. W1M. +
 PORTION OF SECTION LINE 25 + 36 T1N. R10E. W1M.
 HOOD RIVER COUNTY, OREGON
 SCALE 1" = 600'

NARRATIVE

THE PURPOSE OF THIS SURVEY WAS TO MARK THE SOUTH AND WEST LINES OF SECTION 36 T1N. R10E. + THE SOUTH LINE OF SECTION 31 T1N. R11E. W1M. + SET ANY MISSING CORNERS AS SHOWN, ALSO THE LINE BETWEEN N.W. CORNER SECTION 36 + W1/4 CORNER TO SECS. 25 + 36. I FOUND ALL CORNERS EXCEPT THE STANDARD CORNER TO SECTIONS 35 + 36 T1N. R10E. WHICH I CONSIDER LOST. I RESET THIS CORNER BY SINGLE PROPORTIONATE MEASUREMENT FROM FOUND 1/4 CORNERS TO EAST + WEST PER "MANUAL OF SURVEYING INSTRUCTIONS, 1973". STAMPED ALUM. CAPS AS SHOWN AND SCRIBED NEW BEARING TREES. PLACED U.S.F.S. TAG 54-3 ON EACH BEARING TREE FACING CORNER AND TAG 54-9 ON BACK SIDE OF BEARING TREE, PAINTED RED 6" WIDE BAND AROUND EACH BEARING TREE AT EYE HIGH. BEARINGS TO BEARING TREES TAKEN WITH HAND HELD COMPASS DECL 20°E MEASURED TO ESTIMATED CENTERS OF TREES. BEARINGS BASED ON SURVEY No. 85036 BETWEEN SOUTH 1/4 SECTION 36 T1N. R10E. + S.E. CORNER SECTION 31 T1N. R11E. AS SHOWN. I DIDN'T USE THE B.L.M. MONUMENT NEAR THE SOUTH 1/4 CORNER OF SECTION 35, T1N. R10E. BECAUSE IT APPARENTLY WAS SET FROM THE WRONG ORIGINAL BEARING TREE AND THEY FAILED TO FIND THE ORIGINAL N.W. BEARING TREE. I WILL NOTIFY B.L.M. AND HOPEFULLY THEY WILL CHANGE THIS CORNER. A PORTION OF THIS SURVEY WAS DONE IN OCT. 1993 AND FINISHED IN OCT. 1994 WITH A TOPCON TOTAL STATION THEODOLITE MODEL GTS 48.

LEGEND

- = FOUND MONUMENT AS NOTED
- = SET MONUMENT AS NOTED
- B.L.M. = BUREAU OF LAND MANAGEMENT
- U.S.F.S. = UNITED STATES FOREST SERVICE
- CARSONITE POST = 5' ORANGE FIBER GLASS POSTS U.S.F.S. DECALS
- = MARKED LINE WITH PINK PLASTIC RIBBON + RED PAINTED TREE BLAZES WITH CARSONITE POSTS SET AT VARIOUS INTERVALS.
- () = ORIGINAL SURVEY RECORD
- ' () = SURVEY No. 85036 RECORD
- 2 () = SURVEY No. 83074 RECORD



FILED

DEC 12, 1994
 Richard A. Morris
 COUNTY SURVEYOR

94132