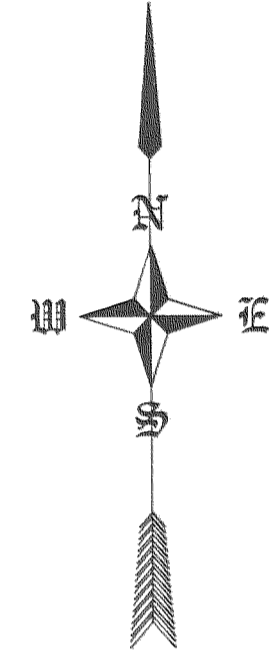
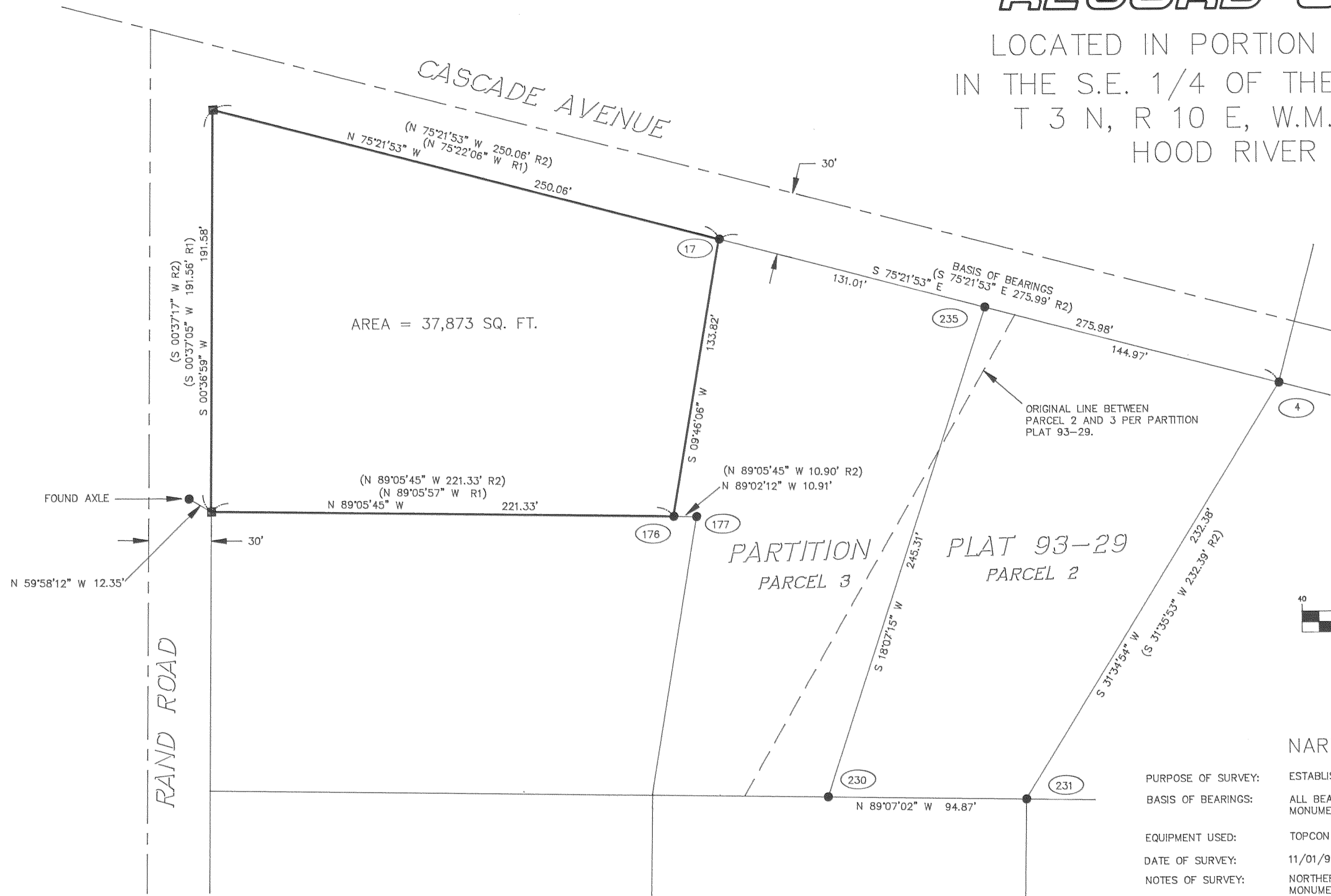
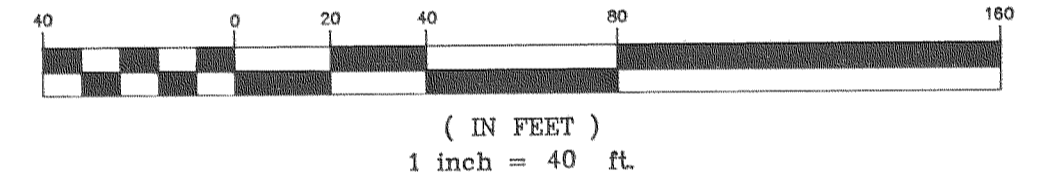


# RECORD OF SURVEY

LOCATED IN PORTION OF GOVERNMENT LOT 6,  
IN THE S.E. 1/4 OF THE S.W. 1/4 OF SECTION 26,  
T 3 N, R 10 E, W.M., CITY OF HOOD RIVER,  
HOOD RIVER COUNTY, OREGON



GRAPHIC SCALE



### NARRATIVE NOTES:

PURPOSE OF SURVEY: ESTABLISH BOUNDARIES OF PROPOSED TACO BELL SITE PER FEE NO. 920254  
 BASIS OF BEARINGS: ALL BEARINGS FOR THIS SURVEY ARE BASED UPON S 75°21'53" E BETWEEN MONUMENTS #17 TO #4, PER PARTITION PLAT 93-29.  
 EQUIPMENT USED: TOPCON GTS-300 ELECTRONIC TOTAL STATION AND TDS DATA COLLECTOR.  
 DATE OF SURVEY: 11/01/94  
 NOTES OF SURVEY: NORTHERLY BOUNDARY OF SITE WAS ESTABLISHED USING THE ALIGNMENT BETWEEN MONUMENTS #4 TO #17 AND EXTENDING IT WESTWARD.  
 THE EASTERLY LINE WAS ESTABLISHED BY INVERSING BETWEEN MONUMENTS #17 AND #176.  
 THE SOUTH LINE WAS ESTABLISHED AT RECORD BEARING AND DISTANCE FROM MONUMENT #176 AS SHOWN ON PARTITION PLAT 93-29.  
 THE WEST LINE WAS ESTABLISHED BY HOLDING THE S.W. CORNER AS CALCULATED N 89°05'45" W 221.33' FROM MONUMENT #176. THE N.W. CORNER WAS THEN CALCULATED AT A POINT 250.06' WESTERLY FROM MONUMENT #17 ON THE ALIGNMENT BETWEEN MONUMENTS #4 TO #17.

### LEGEND:

- BOUNDARY LINE OF SITE
- - - - CENTERLINE OF RIGHT-OF-WAY
- FOUND 5/8" IRON ROD WITH YELLOW CAP PER PARTITION PLAT 93-29, UNLESS INDICATED OTHERWISE
- SET 5/8" X 30" IRON ROD WITH PLASTIC CAP MARKED "PLS 1678"
- ### FOUND MONUMENT NUMBER
- SN HOODRIVER COUNTY SURVEYOR'S NUMBER

REGISTERED  
PROFESSIONAL  
LAND SURVEYOR  
*Gary W. Hickman*  
OREGON  
JULY 14, 1978  
GARY W. HICKMAN  
1678

EXPIRES 06/30/95

**FILED**

DEC 12, 1994

*Richard A. Small*  
COUNTY SURVEYOR

DEPUTY

REVISIONS			
NO.	BY	APPVL	DATE

DESIGNED BY:	DATE: 11/15/94
DRAWN BY: GWH	SCALE: 1"=40'
CHECKED BY: GWH	
DRAWING NO. 2940902B.DWG	

RECORD OF SURVEY  
LOCATED IN S.E. 1/4 OF SECTION 26, T3N, R10E, W.M  
CITY OF HOOD RIVER, HOOD RIVER COUNTY, OREGON  
FOR: TACO BELL CORPORATION, IRVINE, CA

**HWA** HICKMAN, WILLIAMS & ASSOCIATES, INC.  
7150 S.W. FIR LOOP, TIGARD, OREGON 97223  
PHONE (503) 639-5436

SHEET  
1 OF 1