

LOCATION OF SURVEY:

THE NORTHWEST QUARTER OF SECTION 36, TOWNSHIP 1 SOUTH, RANGE 8 EAST, W.M., HOOD RIVER COUNTY, OREGON.

REGISTERED PROFESSIONAL LAND SURVEYOR

OREGON JULY 13, 1979 ROY O. GAYLORD 1815

BASIS OF BEARING:

LOLO PASS CADASTRAL OF 1992, COUNTY SURVEYOR'S No. 93001. THE ORIGINAL CONTROL FOR THE RIG-LOLO CADASTRAL SURVEY WAS FOUND ALONG MCGEE CREEK ROAD. THESE POINTS WERE INCORPORATED IN A CLOSED TRAVERSE DURING THIS SURVEY AND THEIR TRUE SOLAR BEARING WAS USED AS THE BASIS OF BEARING FOR THIS PROJECT.

REFERENCES:

GLO SURVEY BY SAMUEL W. LACKLAND IN 1885, APPROVED 7/30/1885. GLO PLAT SURVEYED BY LEONARD CARTER 8/15/1940 THRU 9/30/1941, APPROVED 2/18/1952. LOLO PASS CADASTRAL SURVEY BY TERRA SURVEYING, C.S. No. 93001. RIG-LOLO CADASTRAL BY TERRA SURVEYING DATED DECEMBER, 1987.

EXAMINED AND ACCEPTED FOR THE U.S.D.A. FOREST SERVICE THIS

DAY OF 199

C.O.R.

I CERTIFY THAT THIS SURVEY WAS PERFORMED AT THE REQUEST OF THE MT. HOOD NATIONAL FOREST SUPERVISOR.

SIGNATURE DATE

HOOD RIVER COUNTY SURVEYOR'S NUMBER 94115

LEGEND:

- SET 3 1/4" ALUMINUM CAP ON A 30" ALUMINUM PIPE WITH A MAGNET INSIDE THE PIPE.
CALCULATED CORNER, NOT SET OR FOUND.
FOUND MONUMENT. PLEASE SEE CORNER INFORMATION.
CORNER NUMBER FOR REFERENCE
ROAD-CROSSING SIGN
POSTED WITH 6 FOOT FIBERGLASS POST AND BLUE PAINT.
GLO PLAT CALL

TERRA SURVEYING

DATE: APRIL, 1995
SCALE: 1" = 500'
PROJECT: 9338

P.O. BOX 617
HOOD RIVER, OREGON 97031
PHONE & FAX: (503) 386-4531

FILED

MAY 9, 1995
Richard J. Sull
COUNTY CLERK

MONUMENTATION FOUND.
FOUND 2 1/2" ALUMINUM CAP BY PLS 1815
FOUND 18" DOUGLAS FIR, NOW 21", N 20'15" E @ 6.10'
FOUND 18" DOUGLAS FIR, NOW 19", S 40'45" E @ 18.5'

MONUMENTATION FOUND.
CAP IS STAMPED
TIS RBE
S35 S36
1994
PLS 1815

MONUMENTATION FOUND.
NONE
WE MARKED
23" CEDAR BEARING N 71 3/4' W @ 30.8' SCRIBED TIS RBE S35 N1/16 BT"
7" CEDAR BEARING WEST @ 1.4' SCRIBED TIS RBE S36 N1/16 BT"
NO ROCKS WERE AVAILABLE FOR A ROSE OR MOUND.
I WAS FORCED TO SCRIBE BOTH BEARING TREES IN SECTION 35.

MONUMENTATION FOUND.
NONE
WE MARKED
14" CEDAR BEARING S 61' W @ 32.6' SCRIBED TIS RBE S36 CN1/16 BT"
22" DOUGLAS FIR BEARING S 34 1/4' E @ 41.3' SCRIBED TIS RBE S36 CN1/16 BT"
SET A STONE ROSE AROUND THE MONUMENT.

MONUMENTATION FOUND.
NONE
WE MARKED
13" CEDAR BEARING S 86 1/2' W @ 28.4' SCRIBED TIS RBE S36 C1/4 BT"
15" DOUGLAS FIR BEARING S 24 1/2' E @ 6.5' SCRIBED TIS RBE S36 C1/4 BT"
PLACED SMALL STONE MOUND AROUND MONUMENT.

MONUMENT FOUND.
SEE BOOK 1 @ PAGE 11 & 12. 2 1/2" BRASS CAP ON GALVANIZED PIPE SET FIRMLY IN THE GROUND WITH MOUND OF STONE ALONG SIDE.
REBUILT MOUND OF STONE.
14" NOBLE FIR, (NOW 16"), N 76' W @ 34 LINKS BLAZE VISIBLE, TREE HEALTHY.
CLEARED BRUSH AND MAINTAINED TREE WITH SIGNS & PAINT.
12" NOBLE FIR, (NOW 13"), S 62' W @ 15 LINKS BLAZE VISIBLE, TREE HEALTHY.
CLEARED BRUSH AND MAINTAINED TREE WITH SIGNS & PAINT.
A 42" DOUG FIR BEARS N 20' E @ 4' FROM THIS CORNER.
THE BARK WAS PROBABLY TOO THICK TO EASILY CHOP OUT
AND SCRIBE THE EXPOSED WOOD. THE TREE IS ALIVE AND HEALTHY.

MONUMENT FOUND.
SEE BOOK 1 @ PAGE 9 & 36. 2 1/2" BRASS CAP ON GALVANIZED PIPE SET FIRMLY IN THE GROUND WITH MOUND OF STONE ALONG SIDE.
REBUILT MOUND OF STONE.
41" HEMLOCK, (NOW 52"), N 57' W @ 22 LINKS SCRIBING VISIBLE, TREE HEALTHY.
CLEARED BRUSH AND MAINTAINED TREE WITH SIGNS & PAINT.
22" HEMLOCK, (NOW 42"), N 27' E @ 37 LINKS BLAZE VISIBLE, TREE HEALTHY.
CLEARED BRUSH AND MAINTAINED TREE WITH SIGNS & PAINT.

THESE TWO CORNERS ARE SHOWN ON THE LOLO PASS CADASTRAL PLAT MAP. THE CORNER CARD INFORMATION REMAINS THE SAME AS THESE CORNERS REQUIRED NO MAINTENANCE.

NARRATIVE:

THIS SURVEY WAS CONTRACTED BY LONGVIEW FIBRE CO. FOR LOGGING PURPOSES. THE GOVERNMENT SHARED IN THE COSTS BECAUSE OF THE COMMON BOUNDARIES. I FOUND NO MAJOR DISCREPANCIES IN THE RESURVEY BY LEONARD CARTER IN 1940/1941 AND THIS CADASTRAL SURVEY. NO OCCUPATION LINE MARKERS, FENCES, BLAZING, OR ETC. WERE FOUND UPON THE GROUND. THE SURVEY WAS VERY ROUTINE AFTER FINDING MR. CARTER'S SOUTH AND EAST QUARTER CORNERS.

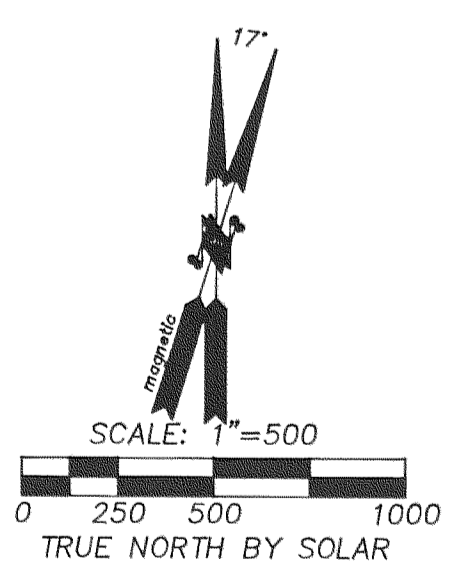
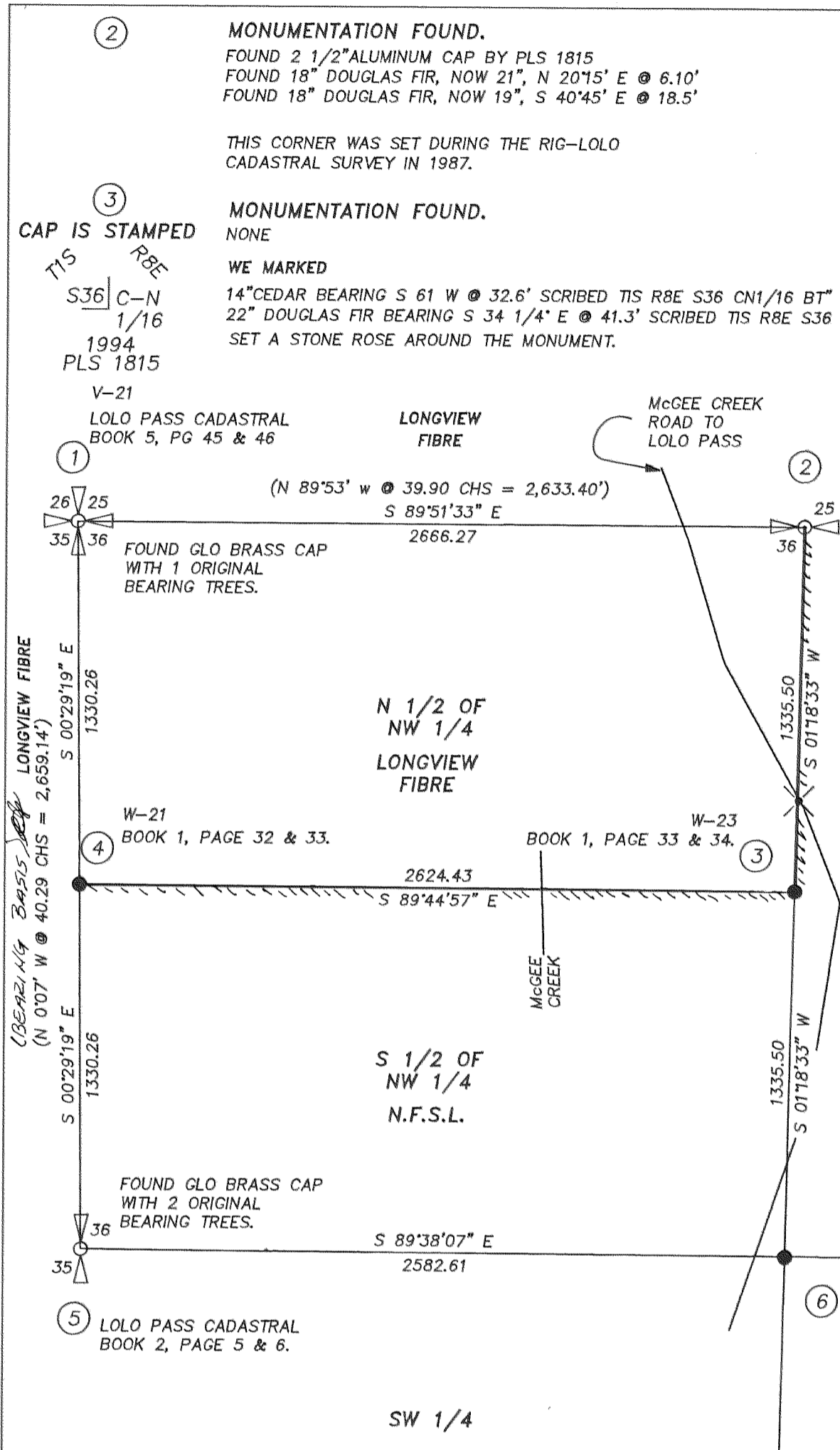
THE EQUIPMENT USED DURING THIS SURVEY WAS A TOPCON ITS-1B TOTAL STATION, 5" INSTRUMENT. IT WAS LAST INSPECTED IN FEBRUARY, 1994, BY JOHNSON INSTRUMENT CO., PORTLAND, OR.

THE FIELD SURVEY TOOK PLACE BETWEEN MAY AND OCTOBER, 1994. ALL FIELD WORK IS RECORDED IN FIELD BOOKS 1 AND 2. THE RAW FIELD DATA WAS COLLECTED ELECTRONICLY AND CONTAINED IN THE RAW DATA PRINTOUTS FROM THE DATA COLLECTOR OF THE ITS-1B.

THIS SURVEY CONSISTED OF TWO CLOSED LOOP, RADIAL, COMPASS ADJUSTED TRAVERSES TO THE SOUTH AND EAST QUARTER CORNERS WHICH CONTROL SECTION 36. POSITIONS OF THE REMAINING CONTROLLING CORNERS WERE COMPUTED FROM PREVIOUSLY LOCATED CORNERS OF THE RIG-LOLO AND LOLO PASS CADASTRAL SURVEYS. THESE CORNER POSITIONS WERE HELD FOR THIS CADASTRAL PROJECT.

NOTE:

ALL MONUMENTS SET AND MAINTAINED HAVE A 6" RED PAINTED BAND AROUND EACH BEARING TREE. AN "ATTENTION" OR "SURVEY MARKER" ALUMINUM SIGN WAS PLACED ON EACH BEARING TREE AWAY FROM THE CORNER. AN ALUMINUM BEARING TREE SIGN WAS PLACED ON EACH BEARING TREE FACING THE CORNER ABOVE THE BLAZE AND BELOW THE RED BAND. A WASHER WAS PLACED BETWEEN THE "B" & THE "T" ON EACH BLAZED TREE. A 6' POLYMER POST WITH A SURVEY MARKER SIGN WAS PLACED BY EACH CORNER MARKER. A STONE MOUND OR ROSE WAS PLACED AS NOTED AT EACH MONUMENT FOUND OR MAINTAINED, EXCEPT THE N 1/16 OF S35 / S36.



SOLAR BEARING TAKEN NEAR THE CENTER QUARTER OF SECTION 25 DURING THE RIG-LOLO CADASTRAL SURVEY.

Z-23
BOOK 1, PAGE 9 & 36.
FOUND GLO BRASS CAP WITH 2 BEARING TREES.

MCGEE CREEK CADASTRAL SURVEY for