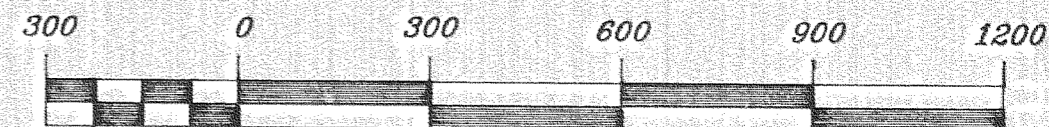
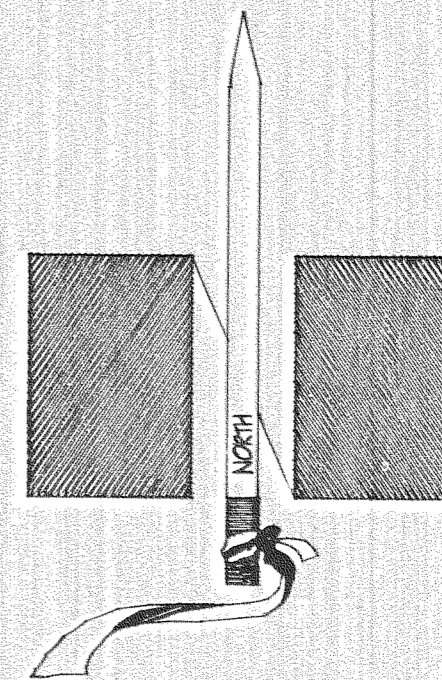


N.W. CORNER
SEE HOOD RIVER COUNTY SURVEY NO. 89048

N. 1/4 CORNER
FOUND 1/2" IRON PIPE



SCALE IN FEET

LEGEND

BASIS OF BEARING DANNY L. CRON SURVEY DATED MARCH 19, 1989
HOOD RIVER COUNTY DRAWING NO. 89048

- - CALCULATED POSITION NOT SET
- - FOUND MONUMENT OF RECORD UNLESS NOTED
- - SET 5/8" IRON ROD WITH RED PLASTIC CAP MARKED "COUNTY SURVEYOR" UNLESS NOTED
- △ 1 - FOUND 5/8" REBAR SET BY T. KLEIN IN 1991 S. 28° E., 4.00'
- △ 2 - FOUND 1/2" REBAR SET BY D. CRON IN 1978 S. 68° E., 11.50'

FILED

APRIL 20, 1994

94027

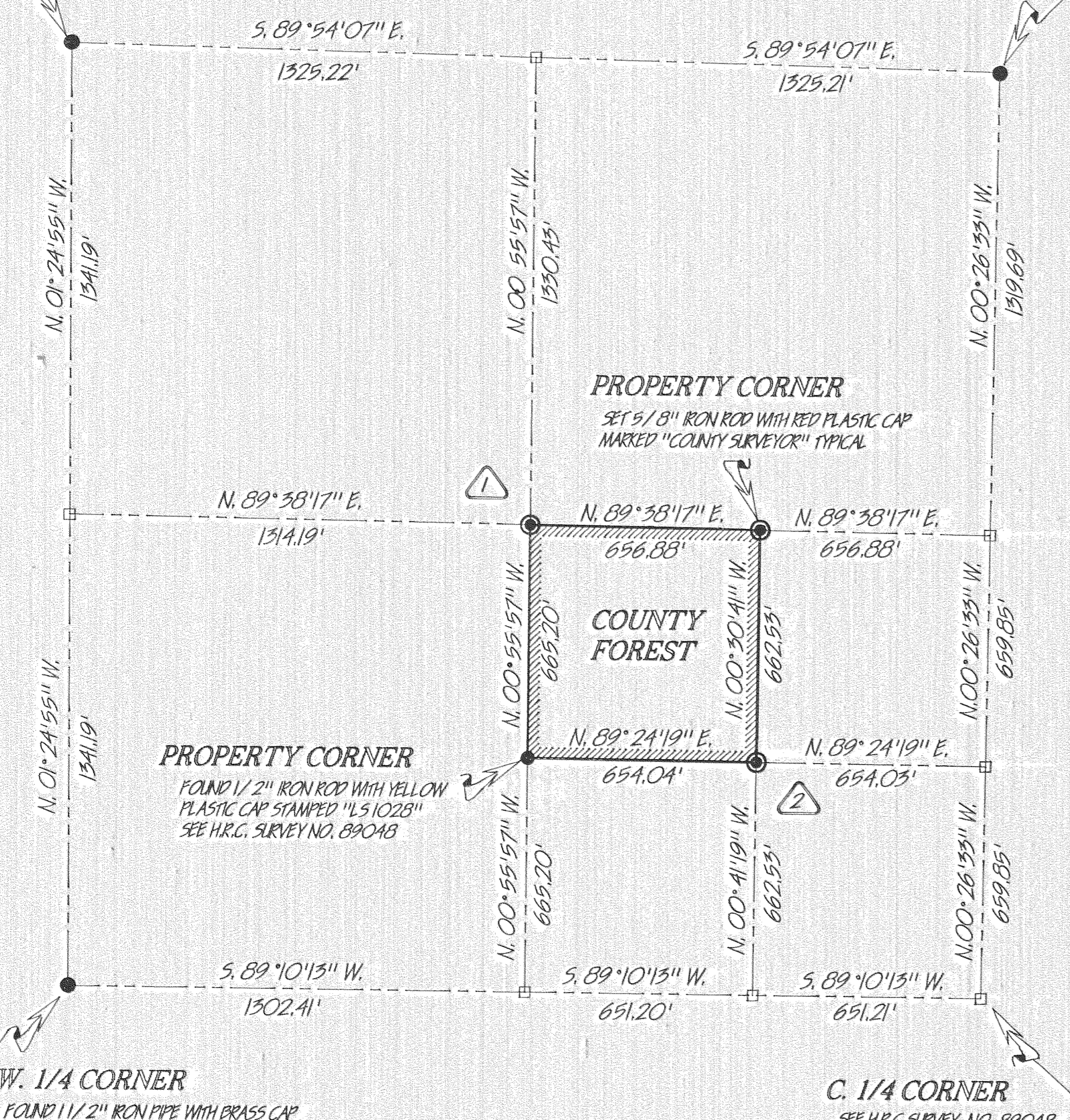
SURVEY DRAWING NUMBER

COUNTY SURVEYOR

REGISTERED
PROFESSIONAL
LAND SURVEYOR

Richard J. Arnold

OREGON
JULY 15, 1983
RICHARD J. ARNOLD
2038



NARRATIVE

THIS SURVEY WAS PERFORMED AT THE REQUEST OF THE HOOD RIVER COUNTY FORESTRY DEPT. IN ORDER TO DETERMINE THE PROPERTY LINES OF THE COUNTY IN THE N.W. 1/4 OF SECTION 28. THREE OF THE CORNERS HAD PREVIOUSLY BEEN SET BY OTHER SURVEYORS, BUT TWO OF THESE CORNERS NEEDED TO BE MOVED AS A RESULT OF THE SOUTH AND WEST QUARTER CORNERS BEING FOUND. WE USED COUNTY SURVEY NO. 89048 TO BASE OUR SURVEY ON, AND TIED THE EAST 1/4 CORNER AND THE NORTH 1/4 CORNER. WE THEN CALCULATED THE BREAKDOWN OF THE N.W. 1/4, AND SET THE PROPERTY CORNERS.

HOOD RIVER COUNTY SURVEY

LOCATED IN THE N.W. 1/4
SECTION 28, T.2 N., R.10 E., W.M.

HOOD RIVER COUNTY, OREGON

DRAWN BY: L. H. DALEY APRIL 1994

94027