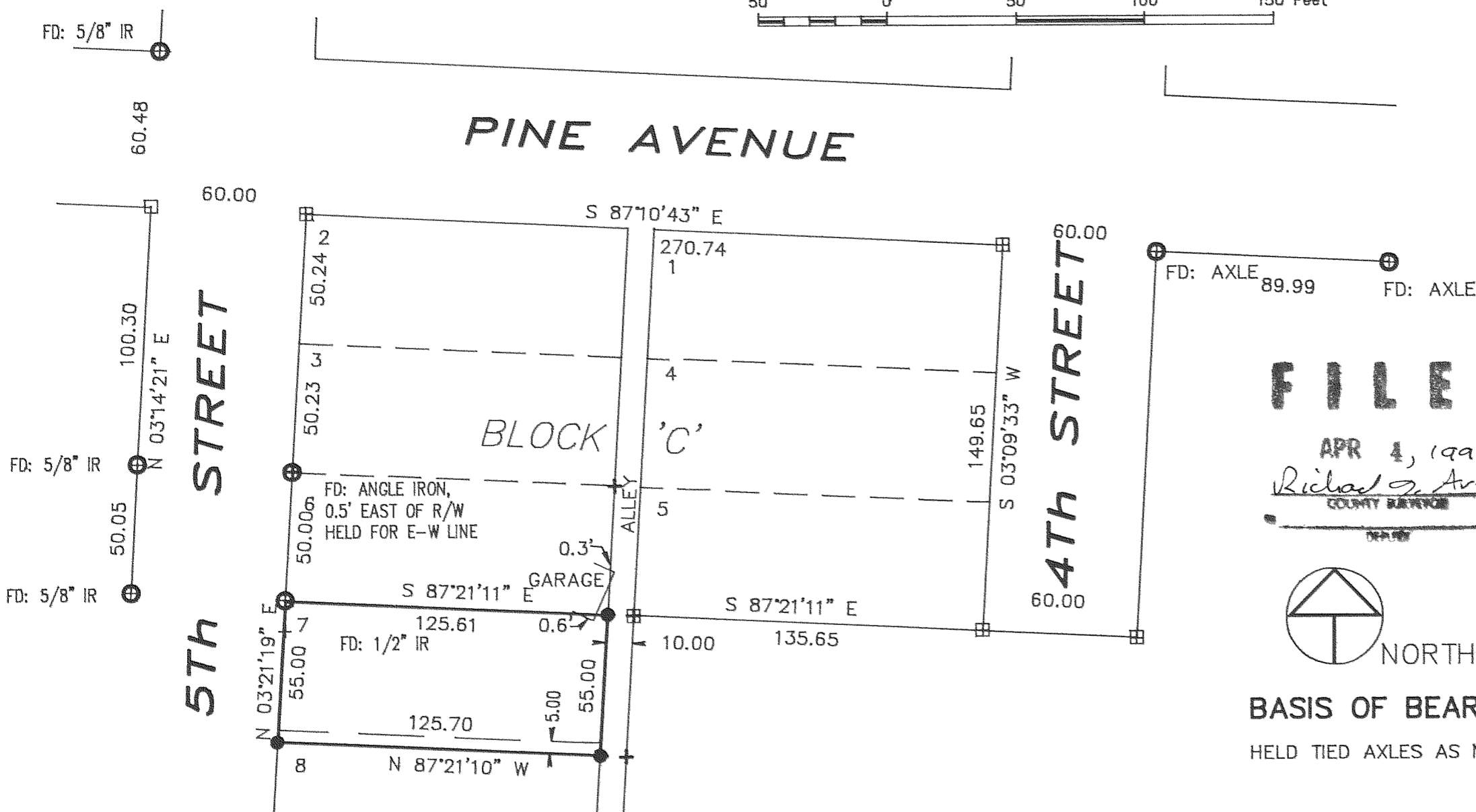


NARRATIVE OF SURVEY

HELD FOUND MONUMENTS TO ESTABLISH RIGHT-OF-WAYS OF PINE AVENUE AND 5TH STREET. HELD CALCULATED POSITION OF SOUTHWEST CORNER OF TAX LOT 7400 TO PROPORTION WEST ALONG SUBDIVISION LINE AND EXTENDED WEST TO WEST LINE OF BLOCK 'C'. HELD PLAT DISTANCES TO THE SOUTH OF FOUND MONUMENTS AS NO MONUMENTS WERE FOUND ESTABLISHING THE SOUTH BOUNDARY OF THE SUBDIVISION



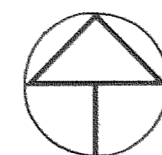
LEGEND

- = SET 5/8" IR WITH PLASTIC CAP MARKED OR #932 & WA #22098 EXCEPT AS NOTED
- = FOUND MONUMENT AS NOTED
- = CALCULATED CORNER AS NOTED

FILED

APR 4, 1994

Richard S. Arndt
COUNTY CLERK



NORTH

REFERENCE SURVEYS

- PLS 1815, CS# 82032
- PLS 932, CS# 7358
- PLS 1815, CS# 90079
- PLS 1815, CS# 86051
- PLS 896, CS# 79006

BASIS OF BEARING:

HELD TIED AXLES AS N 87° 10' 43" W

REGISTERED
PROFESSIONAL
LAND SURVEYOR

Anthony C. Klein
OREGON
JULY 17, 1970
ANTHONY C. KLEIN
932

SURVEY
for
**RONALD W. & CAROLYN L.
McCORMICK**

of
LOT 7 AND THE NORTH 5 FEET OF LOT 8,
OF BLOCK C, BARRETT SIPMA ADDITION
TO THE CITY OF HOOD RIVER



Klein & Assoc.

LAND SURVEYING
1109 Country Club Road
Hood River, Oregon 97031
Tele: (503)386-3322

DATE SURVEYED: MARCH, 1994
JOB NO.: 94004

G:\CAD_DATA\EDS\94004.DWG

94025