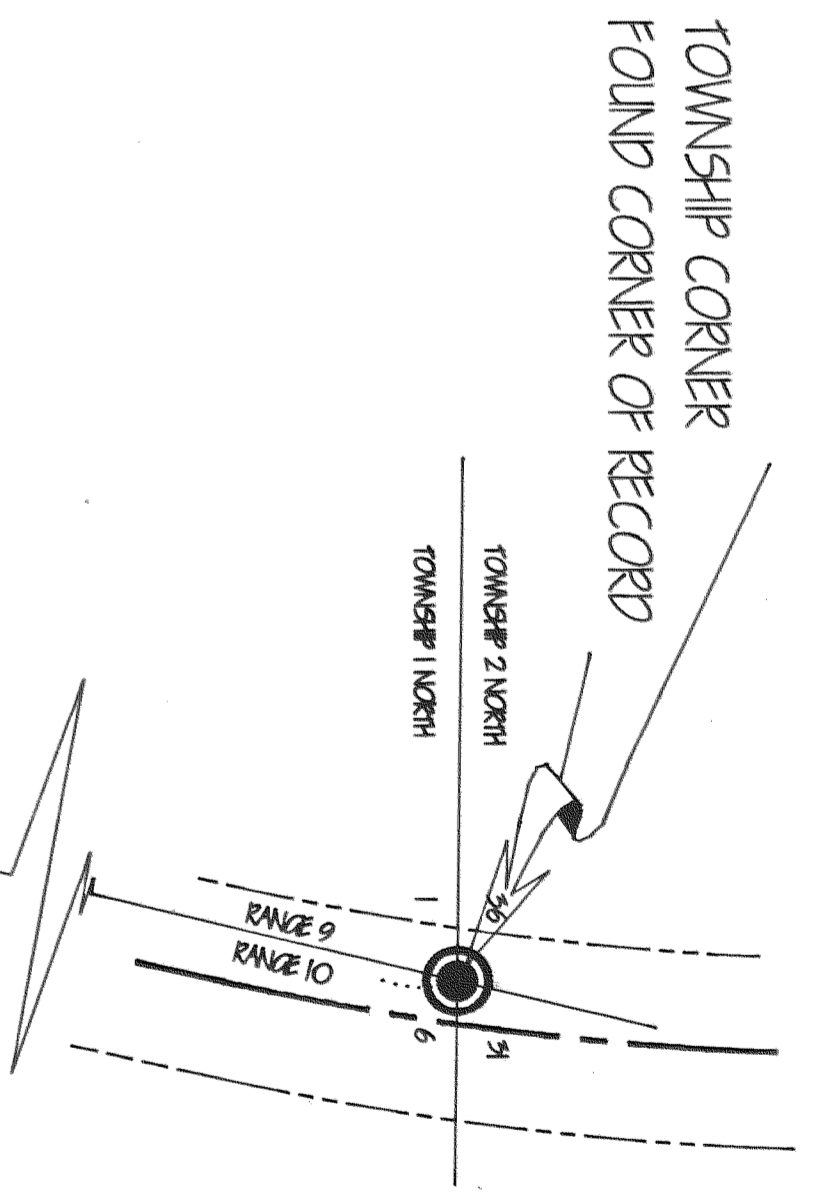
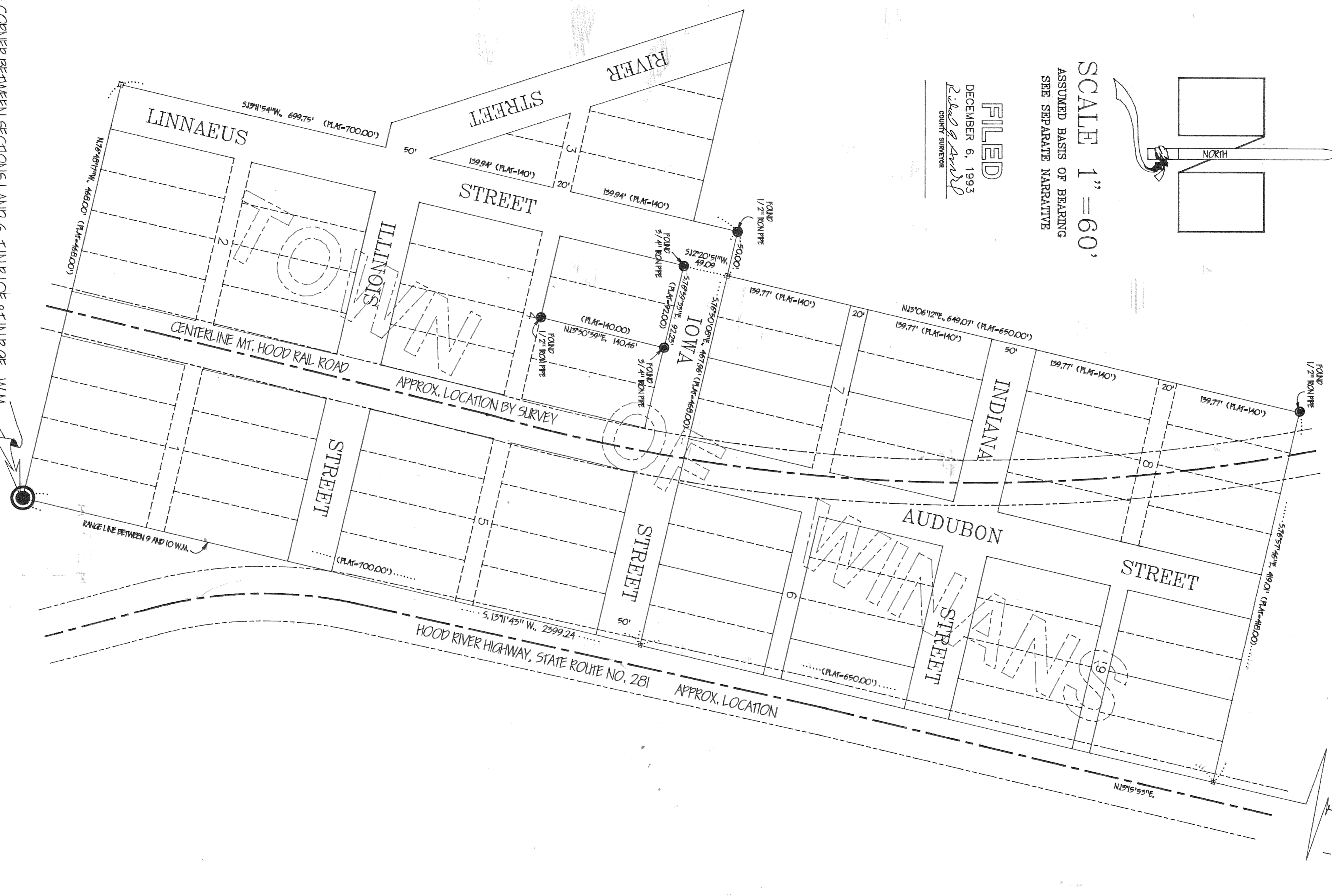


SCALE 1" = 60'
 ASSUMED BASIS OF BEARING
 SEE SEPARATE NARRATIVE

FILED
 DECEMBER 6, 1993
 R. J. Arnold
 COUNTY SURVEYOR



1/4 CORNER BETWEEN SECTIONS 1 AND 6, T.11N.R10E.8.T.1N.R9E, W.M.

SET 1 1/2" IRON PIPE WITH BRASS CAP
 CALCULATED FROM FOUND PIPES
 FOUND AND REMOVED BRASS CAP AND IRON PIPE
 SET BY REY, N40 05' 31" E., 7.361
 HOOD RIVER COUNTY CORNER CAP NO. 65

REGISTERED
 PROFESSIONAL
 LAND SURVEYOR
 R. J. Arnold
 JULY 1983
 RICHARD J. ARNOLD
 2038

HOOD RIVER COUNTY SURVEY OFFICE
 REESTABLISHMENT OF THE 1/4 CORNER
 BETWEEN SECTIONS 1 AND 6, T.11N.R10E., AND T.1N.R9E

R. J. ARNOLD, COUNTY SURVEYOR DECEMBER 1993
 DRAWN BY: L. H. DALEY / DECEMBER 1993