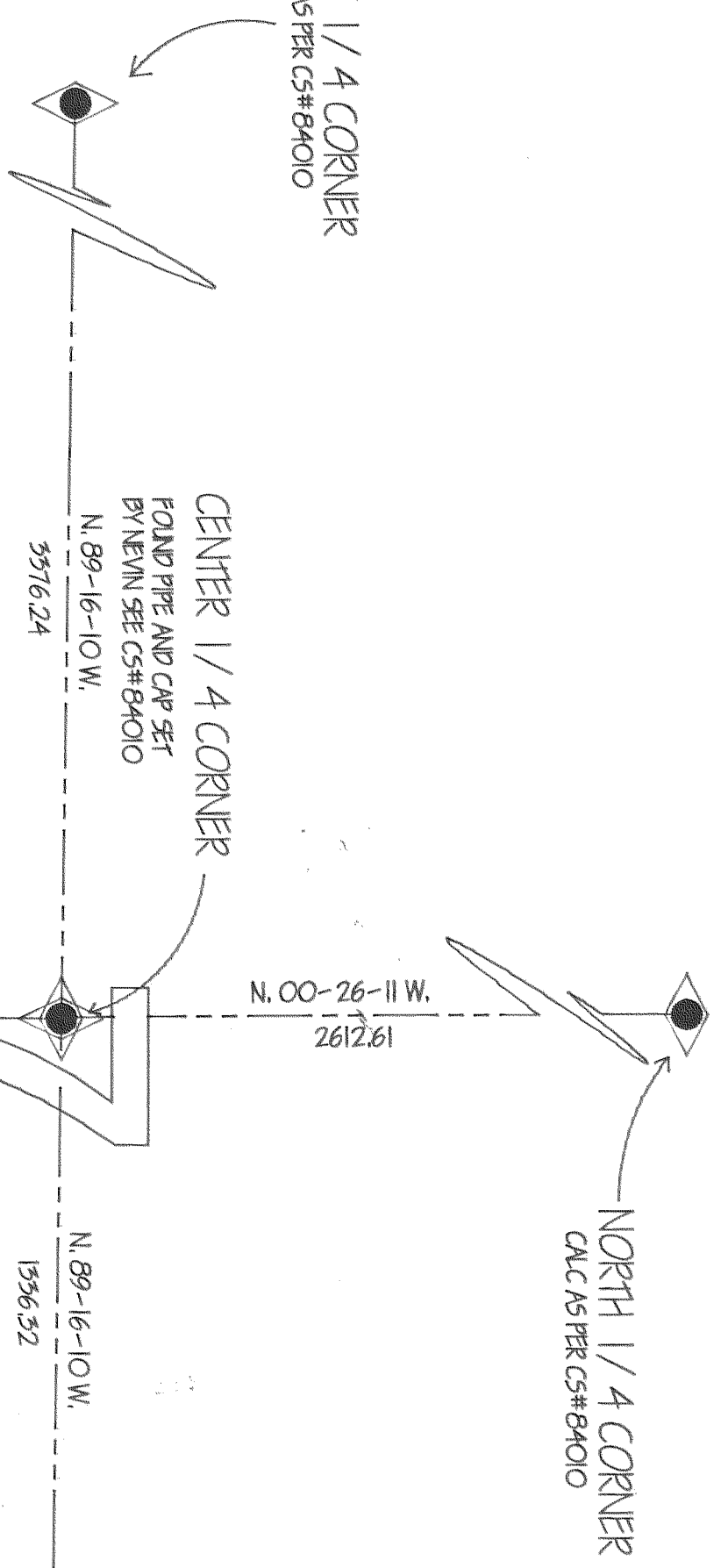


WEST 1/4 CORNER
CALC AS PER CS#B4010

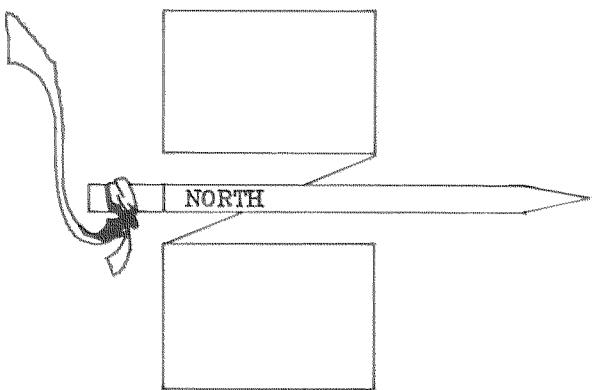


NARRATIVE

In April of 1993, the Hood River County Forestry Department requested that I set three corners in Sections 7 and 18 Twp. 11N.R.1E.

I tied the center of section 7, set in 1984 by Dan Nevin, see CS#B4010, to the West 1/4 corner of section 18. The Hood River County Survey Dept. had performed a survey in section 18 in 1984, see CS#B4013. I used said HRC survey to calculate the position of the center north 1/16 corner of section 18, and I used the Nevin Survey to calculate the positions of the SE 1/16 of section 7 and the south 1/16 between sections 7 and 8. I then traversed in to the three calculated positions and set all three corners.

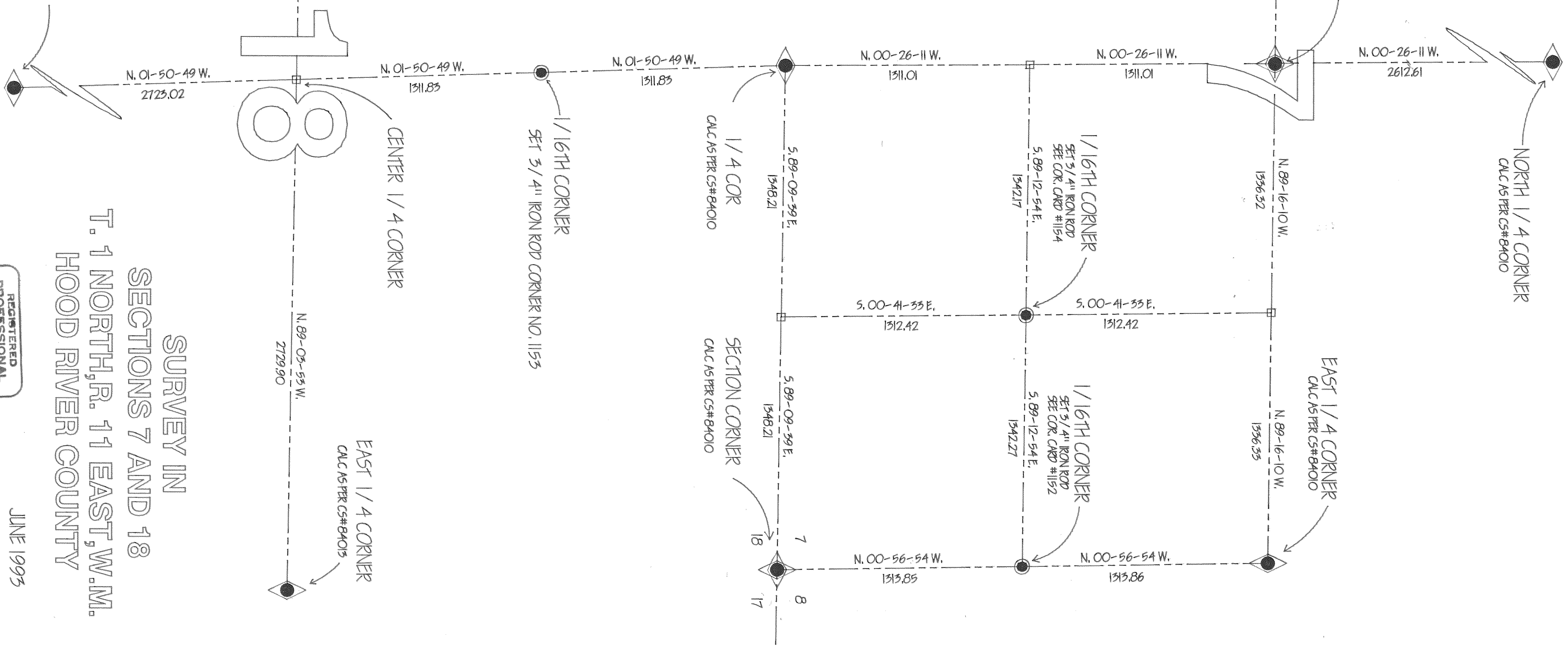
Dick Arnold,
Dale Arnold
County Surveyor



SCALE 1" = 400'

LEGEND

□ = calc. not set



WEST 1/4 CORNER
FOUND 1 1/2" IRON PIPE WITH ALUMINUM CAP
SET FROM ORIGINAL EVIDENCE CORNER NO. 232

SOUTH 1/4 CORNER
CALC AS PER CS#B4015

SURVEY IN
SECTIONS 7 AND 18
T. 1 NORTH, R. 11 EAST, W.M.
HOOD RIVER COUNTY

FILED

NOV 12, 1993
Richard J. Arnold
COUNTY SURVEYOR

JUNE 1993

REGISTERED
PROFESSIONAL
LAND SURVEYOR
RICHARD J. ARNOLD
20039