

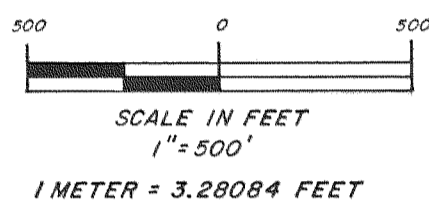
RECORD OF SURVEY OF THE:

NE1/4 OF THE NW1/4 OF FRACTIONAL SECTION 8, TWP. 2 N, RGE. 8 E, W.M.; SOUTH 1/2 OF THE SW1/4 OF THE SW1/4 OF THE SE1/4 OF FRACTIONAL SECTION 5, TWP. 2 N, RGE. 8 E, W.M. AND TAX LOT 800 IN THE NW1/4 OF THE SE1/4 OF FRACTIONAL SECTION 5, TWP. 2 N, RGE. 8 E, W.M. ALL IN HOOD RIVER COUNTY, OREGON. CONTRACT No. 53-05K3-9-06075e

DECEMBER 1989 THRU JULY 1992 **SHEET 1 OF 4**

LEGEND:

- = EXISTING CORNER MONUMENT LEFT IN ORIGINAL CONDITION
- ⊙ = OBLITERATED OR LOST PUBLIC LANDS SURVEY CORNER DUE TO CONSTRUCTION OF BONNEVILLE DAM AND SUBSEQUENT FLOODING
- = SET A 1/2" X 3/8" USDA ALUM. MON. WITH 3/4" ALUM. CAP UNLESS OTHERWISE NOTED IN THE CORNER NOTES
- ↔ = ACCENTS SECTION CORNER, CORRESPONDS WITH ABOVE SYMBOLS
- ⑩ = REFER TO CORNER NOTE INDICATED BY NUMBER
- = BOUNDARY LINE POSTED WITH 6" CARSONITE POST, AND TREES WITHIN THREE FEET OF THE LINE BLAZED
- ⊗ = WITNESS CORNER LOST DUE TO CHANNEL SCOUR, RESET



EXPLANATION OF PARENTHESIS:

- () = BEARING/DISTANCE OF W. CAMPBELL IN FEET & CHAINS, 1897
- (S-) = " " R. SHORT IN FEET & CHAINS, 1860
- (S/A-) = " " R. SHORT IN FEET AND CHAINS, 1860 AND USED BY US ARMY CORP, 1934
- (A-) = BEARING/DISTANCE OF US ARMY CORP, 1934
- (M-) = " " MARX & CHASE, 1971
- (B-) = " " L. BISHOP, 1987
- (P-) = " " M. PERKINS, 1957

NOTE:

ALL BEARING TREES FOUND OR NEW BEARING TREES WERE PAINTED WITH RED PAINT ALONG THE FACE OR SCRIBE AND A 6" BAND WITHIN 6' FROM THE GROUND. DIAMETERS OF BEARING TREES WERE MEASURED ABOUT 4.5' ABOVE THE GROUND (DBH), BEARINGS & DISTANCE TO THE BEARING TREES WERE MEASURED TO THE CENTER ABOUT 1' ABOVE THE ROOT CROWN. AT NEW BEARING TREES A BRASS SHINER, MARKED "LS 2209" WAS PLACED BETWEEN THE "BT", AND AN ALUMINUM NAIL WAS DRIVEN AT THE CENTER OF THE TREE, ON THE SIDE FROM WHICH THE DISTANCE CAN BE MEASURED. A 54-3 SIGN WAS PLACED IN FRONT OF THE TREE FACING THE MONUMENT AND A 54-9 PLACED ON THE BACK.

MAGNETIC DECLINATION, AVERAGED 22°00'E

HISTORY OF SURVEYS:

- 1860 - ROBERT V. SHORT, U.S. DEPUTY SURVEYOR, CONTRACT No. 85, A) SURVEYS NORTH TOWNSHIP LINE T. 2 N, R. 8 E.W.M.; B) SURVEYS A PORTION OF WEST AND EAST RANGE LINES T. 2 N, R. 8 E.W.M. C) SUBDIVIDES SECTION 6, T. 2 N, R. 8 E.W.M. D) SUBDIVIDES PORTIONS OF SECTIONS 4, 5, 7, 8, T. 2 N, R. 8 E.W.M.
- 1897 - WILLIAM E. CAMPBELL, U.S. DEPUTY SURVEYOR, CONTRACT No. 668, A) COMPLETES SURVEY OF TOWNSHIP LINES T. 2 N, R. 8 E, W.M.; B) COMPLETES SURVEY OF RANGE LINES T. 2 N, R. 8 E, W.M.; C) SUBDIVIDES REMAINING SECTIONS IN TOWNSHIP.
- 1916 - RAILROAD RIGHT-OF-WAY AND TRACK SURVEY.
- 1934 - UNITED STATES ARMY CORP "BONNEVILLE PROJECT LANDS" SURVEY RETRACES SECTION LINES OF SEC. 5, T. 2 N, R. 8 E, W.M., REMONUMENTS CORNERS (SEE NOTES), ESTABLISHES AND MONUMENTS ALIQUOT PARTS OF SAID SECTION.
- 1939 - UNITED STATES DEPT. OF INTERIOR "BONNEVILLE-THE DALLES LINE", TRANSMISSION LINE SURVEY.
- 1957 - MART C. PERKINS, REGISTERED PROFESSIONAL ENGINEER, SURVEY IN THE SW1/4 OF THE SW1/4 OF SEC. 4, T. 2 N, R. 8 E, W.M.
- 1971 - MARX & CHASE SURVEYS THE W1/2 OF THE SECTION LINE BETWEEN SECTION 5 & 8, T. 2 N, R. 8 E, W.M., AND THE BOUNDARIES OF THE OXBOW FISH HATCHERY.
- 1973 - HOOD RIVER COUNTY RETRACES THE SECTION LINE BETWEEN SECTIONS 5 & 8, T. 2 N, R. 8 E, W.M. AND REMONUMENTS CORNERS (SEE NOTES)
- 1987 - LARRY D. BISHOP, REGISTERED LAND SURVEYOR, RETRACES AND REMONUMENTS A PORTION OF THE NORTH LINE AND WEST LINE OF SEC. 8, T. 2 N, R. 8 E, W.M. (SEE NOTES)
- SURVEY OF RELOCATED HIGHWAY 30, RIGHT-OF-WAY (SEE MAP 5/58 9F10-8) DATE UNKNOWN
- SURVEY OF INTERSTATE 84, RIGHT-OF-WAY (SEE MAP 6B-35-5, DATE UNKNOWN)

FILED

SEP 21, 1993
Richard J. Andl
COUNTY SURVEYOR

SURVEY NARRATIVE

SURVEY FOR:
UNITED STATES DEPARTMENT OF AGRICULTURE,
FOREST SERVICE, GIFFORD PINCHOT NATIONAL FOREST
P.O. BOX 8944
VANCOUVER, WASH. 98668-8944

SURVEY BY:
KARL W. FERRIER, L.S. 2209
P.O. BOX 1159
OCEAN PARK, WASH. 98640
(206) 665-4550

PROJECT:
"LADY, HENRY, HERMAN, DODSON CADASTRAL SURVEYS", CONTRACT No. 53-05K3-9-06075e, IN THE MT. HOOD NATIONAL FOREST

PURPOSE:
TO MONUMENT, OR REMONUMENT WHERE REQUIRED, THE BOUNDARIES OF THE NATIONAL FOREST SYSTEM LANDS, TO BLAZE AND POST THE BOUNDARY LINES OF SAID LANDS, AND NOTE ANY TRESPASS UPON SAID LANDS LOCATED IN:
A) THE NE1/4 OF THE NW1/4 OF SECTION 8, T. 2 N, R. 8 E, W.M.;
B) THE S1/2 OF THE SW1/4 OF THE SW1/4 OF SECTION 5, T. 2 N, R. 8 E, W.M.;
C) TAX LOT 800 IN THE NW1/4 OF THE SE1/4 OF SECTION 5, T. 2 N, R. 8 E, W.M.
ALL BEING A PORTION OF THE MT. HOOD NATIONAL FOREST IN HOOD RIVER COUNTY, OREGON.

BEARINGS:
TRUE ASTRONOMIC, BASED ON SOLAR OBSERVATION CALCULATED BY THE HOUR ANGLE METHOD, ON JUNE 27, 1990, AT LATITUDE 45°40'49" NORTH, LONGITUDE 121°51'10" WEST, UNIVERSAL TIME 23h 12m 40s.

PROCEDURE:
A SERIES OF RANDOM CLOSED TRAVERSES WERE RUN TO ALL CONTROLLING CORNERS, AS SHOWN ON SHEETS 1, 2, & 3 OF 4, OF THIS PLAT. THE POSITION OF ALL ORIGINAL CORNERS WERE ACCEPTED, EXCEPT AS OTHERWISE EXPLAINED IN THE "NOTES". POSITIONS OF NEW CORNERS WERE CALCULATED ACCORDING TO THE MANUAL OF INSTRUCTIONS FOR THE SURVEYS OF THE PUBLIC LANDS. TRAVERSES WERE ADJUSTED BY THE "COMPASS RULE", OFFSETS WERE CALCULATED FROM THE TRAVERSE LINE TO THE TRUE LINE, POSTS WERE SET AND TREES WITHIN THREE FEET OF THE TRUE LINE WERE BLAZED.

EQUIPMENT USED:
LIETZ SOKKISHA SDM3F10 SEMI-TOTAL STA. EDM,
PENTAX PRISM, 100' LUFKIN TAPE,
SILVA AND SUUNTO COMPASSES

FIELD BOOKS:
"HERMAN" BOOKS I THRU 4.
AND "HERMAN II" BOOK ONE

I, KARL W. FERRIER, A REGISTERED LAND SURVEYOR IN THE STATE OF OREGON, HEREBY CERTIFY THAT THIS PLAT, SHEETS 1 THRU 4, AND THE NOTES THEREON ARE A CORRECT REPRESENTATION OF A SURVEY I PERFORMED AT THE REQUEST OF THE USDA FOREST SERVICE IN ACCORDANCE WITH THE STATUTES OF THE STATE OF OREGON AND THE ARTICLES OF MY CONTRACT.

EXAMINED AND ACCEPTED FOR USDA-FOREST SERVICE THIS 12th DAY OF Sept 1993.
John C. Richmond
COR
I CERTIFY THAT THE SURVEY WAS PERFORMED AT THE REQUEST OF THE
Mt Hood
NATIONAL FOREST SUPERVISOR

Karl W Ferrier
KARL W. FERRIER, L.S. 2209

Mike Edinger 9/10/93
SIGNATURE

REGISTERED PROFESSIONAL LAND SURVEYOR

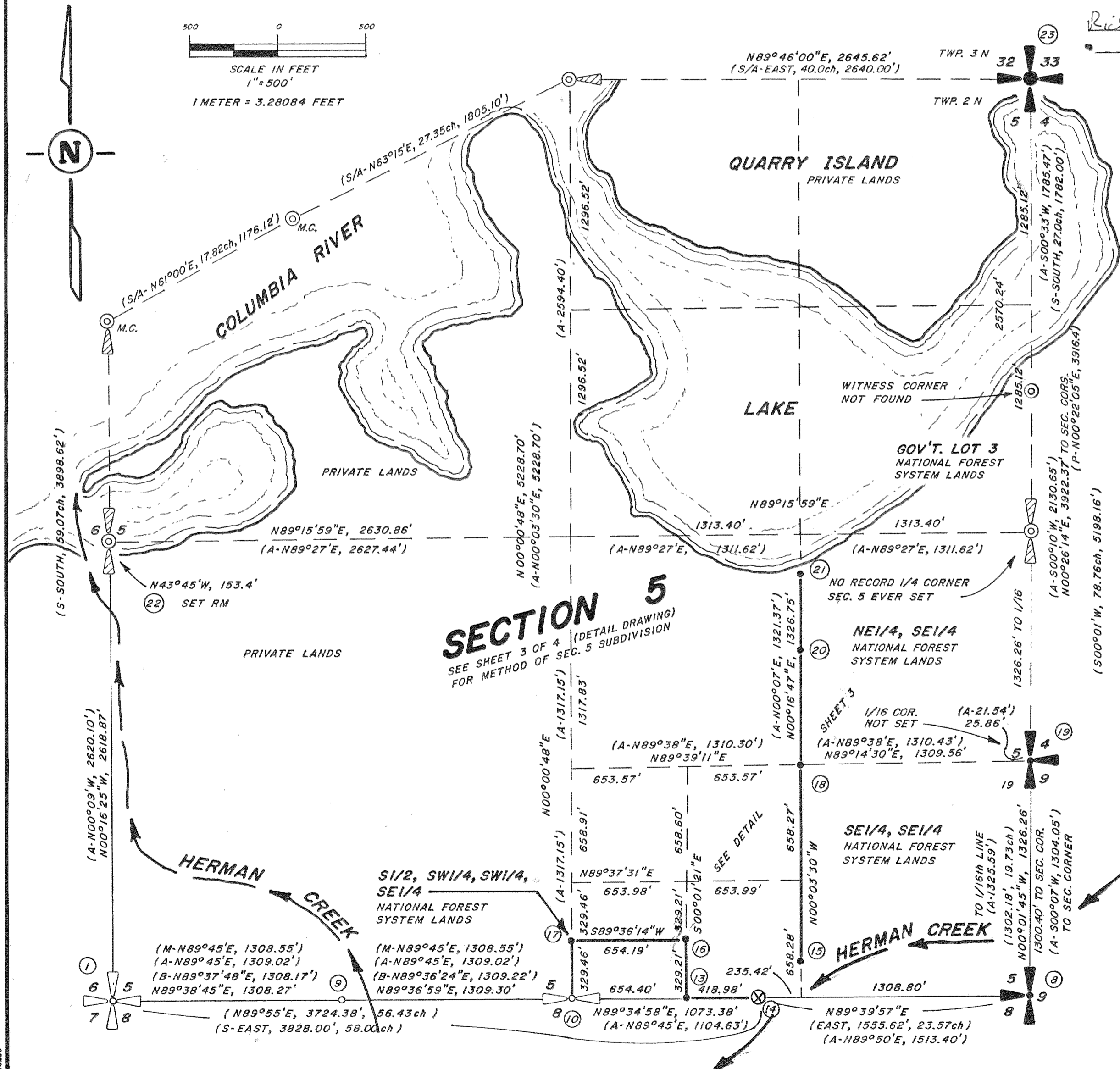
OREGON
JULY 17, 1958
KARL W. FERRIER
2209

AMENDED DRAWING AUG. 26, 1993

KARL W. FERRIER REG. LAND SURVEYOR
OREGON & WASHINGTON
P.O. BOX 1159 (1405 BAY AVE) OCEAN PARK, WA. 98640
(206) 665-4550

DWN BY J.A. Smith	DATE July 8, 1992	CHKD BY K.W.F.
CREW CHIEF K.W. Ferrier	SCALE 1" = 500'	SHEET 1 OF 4

93070



148235
VICKOR McCRAYS INC.

RECORD OF SURVEY OF THE:

NE1/4 OF THE NW1/4 OF FRACTIONAL SECTION 8, TWP. 2 N, RGE. 8 E, W.M.; SOUTH 1/2 OF THE SW1/4 OF THE SW1/4 OF THE SE1/4 OF FRACTIONAL SECTION 5, TWP. 2 N, RGE. 8 E, W.M. AND TAX LOT 800 IN THE NW1/4 OF THE SE1/4 OF FRACTIONAL SECTION 5, TWP. 2 N, RGE. 8 E, W.M. ALL IN HOOD RIVER COUNTY, OREGON. CONTRACT No. 53-05K3-9-06075e DECEMBER 1989 THRU JULY 1992 **SHEET 2 OF 4**

LEGEND:

- = EXISTING CORNER MONUMENT LEFT IN ORIGINAL CONDITION
- ⊙ = OBLITERATED OR LOST PUBLIC LANDS SURVEY CORNER DUE TO CONSTRUCTION OF BONNEVILLE DAM AND SUBSEQUENT FLOODING
- = SET A 1/2"X3/8" USDA ALUM. MON. WITH 3/4" ALUM. CAP UNLESS OTHERWISE NOTED IN THE CORNER NOTES
- ◁ = ACCENTS SECTION CORNER, CORRESPONDS WITH ABOVE SYMBOLS
- ⑩ = REFER TO CORNER NOTE INDICATED BY THE NUMBER
- = BOUNDARY LINE POSTED WITH 6" CARSONITE POST, AND TREES WITHIN THREE FEET OF THE LINE BLAZED

CORNER NOTES:

- 2 **FOUND ONE 1/4 CORNER:** (FB1/PG19) A 3/4" BRASS CAP ON 2" IRON ROD IN STONE MOUND 2' IN DIAMETER 1' HIGH, STAMPED:
BT'S FOUND: A 16" DOUGLAS FIR/HEALED FACE T.2N.R.8E.W.M.
 S57°00'W, 20.4'; A 26" DOUGLAS FIR WITH HEALED FACE S45°00'E, 24.0'; AN OLD ROTTEN FIR STUMP 40"± HIGH S67°E, 18', POSSIBLE ORIGINAL BT.
 1/4 S8
 1984
 PLS 932
- 4 **FOUND SECTION CORNER:** (FB4/PG11) A 2 1/2" USDA ALUM. MON. WITH 3" ALUM. CAP STAMPED: T.2N R8E
BT'S FOUND: A 22" FIR WITH HEALED FACE N28°E, 23.1'; ORIGINAL; AN 18" FIR WITH VISIBLE FACE SCRIBED "T2N R8E S17 BT" S75°E, 13.9'
 S8
 S17
 LS 896
 1987

EXPLANATION OF PARENTHESIS:

- () = BEARING AND DISTANCE OF W. CAMPBELL IN FEET AND CHAINS, 1897
- (S-) = " " R. SHORT IN FEET AND CHAINS, 1860
- (A-) = " " US ARMY CORP, 1934
- (M-) = " " MARX & CHASE, 1971
- (B-) = " " L. BISHOP, 1987

FOR HISTORY OF SURVEYS AND SURVEY NARRATIVE SEE SHEET 1 OF 4.

CORNER NOTES:

- 1 **FOUND SECTION CORNER:** (FB1/PG7) A 3" BRASS CAP ON 2" IRON PIPE STAMPED: HOOD RIVER COUNTY
 T.2N.R.8E.W.M.
 1973
- BT'S FOUND:** A 25" DOUGLAS FIR WITH HEALED FACE N17°30'E, 49.0'; A 14" OAK N53°30'W, 53.9' SCRIBE VISIBLE "T2N R8E S6 BT"; SHRW PIN AT STA 220+00 150' RIGHT S04°42'28"W, 288.02'; SHRW PIN AT STA. 222+81.59 RIGHT S49°42'18"E, 324.69'. ORIGINAL BT'S GONE
- 3 **FOUND WITNESS CORNER:** (FB1/PG19) A 3/4" ALUM. PIPE IN STONE MOUND 2' DIAMETER 1' HIGH, STAMPED: T.2N.R.8E.W.M.
BT'S FOUND: AN OLD STUMP HOLE N40°W, 14.0', POSSIBLE ORIGINAL; AN 8" BURNED FIR STUMP WITH AX MARKS S56°E, 55.2', POSSIBLE ORIGINAL; A 30" FIR WITH HEALED FACE S35°E, 12.5' ORIGINAL BT; A 24" FIR/HEALED FACE S64°W, 12.7' ORIGINAL BT; AN 18" FIR/HEALED FACE S47°W, 23.8'; A 24" FIR/HEALED FACE N86°E, 15.1'.
 WC
 7 | 8
 1984
 PLS 932

NOTE:

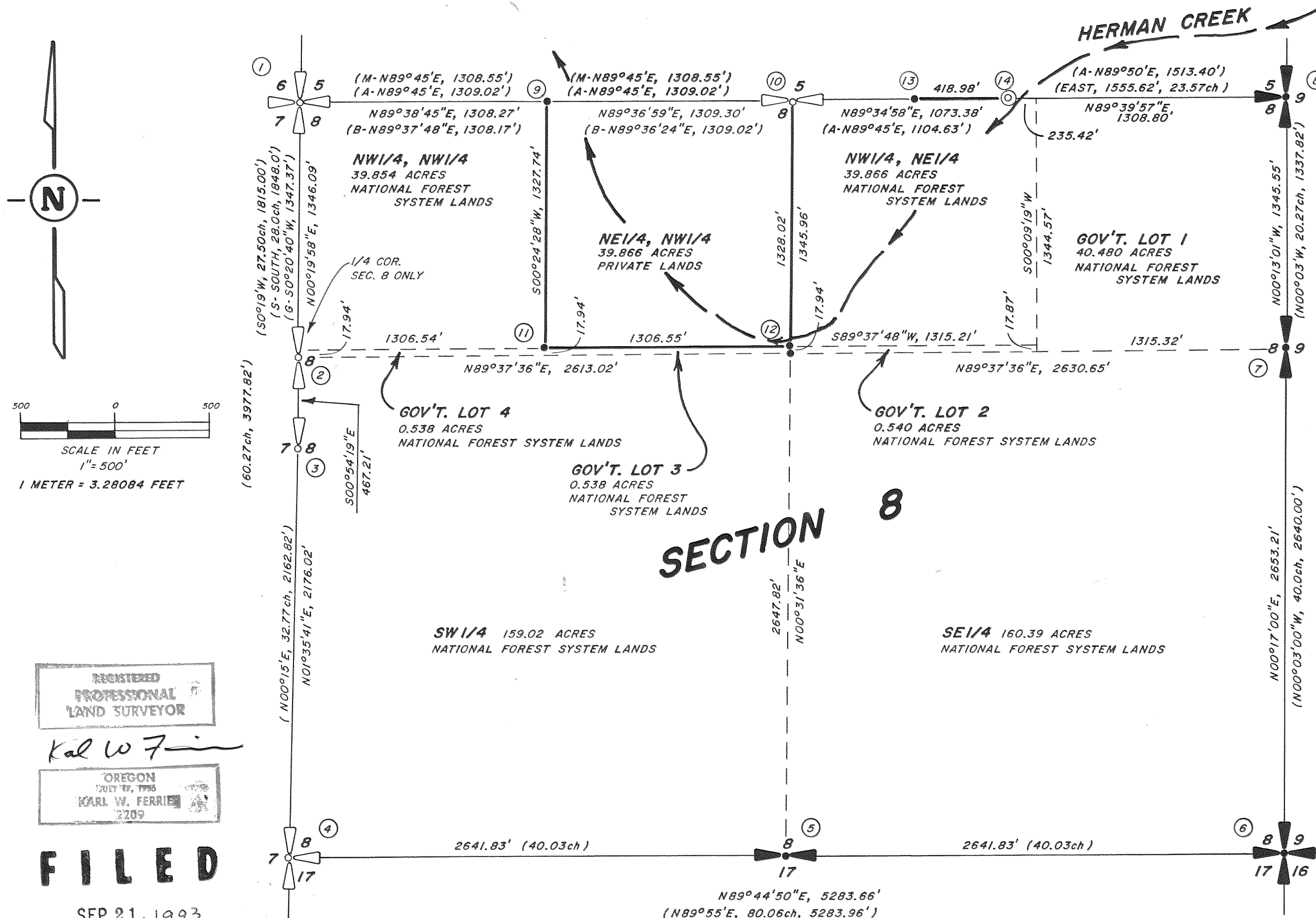
ALL BEARING TREES FOUND, OR NEW BEARING TREES MARKED WERE PAINTED WITH RED PAINT ALONG THE FACE OR SCRIBE AND A 6" BAND WITHIN 6' FROM THE GROUND. DIAMETERS OF BEARING TREES WERE MEASURED ABOUT 4.5' ABOVE THE GROUND (DBH), BEARING AND DISTANCES TO THE BEARING TREES WERE MEASURED TO THE CENTER OF THE TREE ABOUT ONE FOOT ABOVE THE ROOT CROWN. AT NEW BEARING TREES A BRASS SHINER, MARKED "LS 2209" WAS PLACED BETWEEN THE BT, AND AN ALUMINUM NAIL WAS DRIVEN AT THE CENTER OF THE TREE ON THE SIDE FROM WHICH THE DISTANCE CAN BE MEASURED. A 54-3 SIGN WAS PLACED IN FRONT OF THE TREE FACING THE MONUMENT AND A 54-9 SIGN WAS PLACED ON THE BACK.

MAGNETIC DECLINATION AVERAGED ABOUT 22°00'E

THE BOUNDARY LINES POSTED AND THE CENTER OF SECTION SET WERE CALCULATED FROM MY SUBDIVISION OF SECTION 8. THE GOVERNMENT LOTS WERE CALCULATED PROPORTIONED TO THE RECORD. SEE CORNER NOTES FOR HOW A PARTICULAR "LOST" CORNER WAS CALCULATED AND RE-SET.

CORNER NOTES:

- 5 **SET ONE 1/4 CORNER:** BY SINGLE PROPORTIONATE MEASURE (FB4/PG25) NO EVIDENCE OF ORIGINAL. SET A 2 1/2"X3/8" USDA ALUM. MON. WITH A 3/4" ALUM. CAP STAMPED: T2N R8E
NEW BT'S MARKED: A 3" VINE MAPLE SCRIBED "X BT" N25°30'E, 35.42'; A 10" MAPLE SCRIBED "1/4 S8 BT" N37°30'E, 72.67'; A 1 1/2"X3 1/2"X1' BOULDER CHISELED "X B0" BEARS EAST, 2.33' TO "X"
 T2N R8E
 1/4 S8
 S17
 LS 2209 1990
- 6 **SET SECTION CORNER:** BY INTERSECTION OF THREE OF FOUR ORIGINAL BT'S (FB4/PG21) ORIGINAL STONE GONE. SET A 2 1/2"X3/8" USDA ALUM. MON. WITH 3/4" ALUM. CAP STAMPED:
BT'S FOUND: A 24" FIR WITH HEAL FACE N38°W, 4.6' (GLO = 8" FIR N38°W, 4.62'); A 36" FIR WITH HEALED FACE N40°30'E, 32.4' (GLO = 12" FIR N04°30'E, 32.34'); A 22" FIR WITH HEALED FACE S14°W, 43.0' (GLO = S14°W, 40.26'); (GLO SOUTHEAST BT MISSING, RECENT SLIDE MAY HAVE WIPED OUT BT).
NEW BT: A 24" FIR SCRIBED "S16 BT" S55°E, 31.31'.
 T2N R8E
 S8 | S9
 S17 | S16
 LS 2209 1990
- 7 **FOUND ONE 1/4 CORNER:** (FB3/PG29) FOUND ORIGINAL GLO STONE 10" IN THE GROUND A 15"X12"X8" STONE WITH "X" ON TOP & "1/4" ON WEST FACE, A 3'X11/2' HIGH STONE MOUND BEARS 3' WEST.
REMONUMENTED: SET A 2 1/2"X3/8" USDA ALUM. MON. WITH 3/4" ALUM. CAP STAMPED:
NEW BT'S: A 16" FIR SCRIBED "1/4 S9 BT" S89°E, 23.95'; A 14" FIR SCRIBED "1/4 S8 BT" S23°W, 14.96'; A 13" FIR SCRIBED "1/4 S8 BT" N89°W, 17.29'; A 12" FIR SCRIBED "1/4 S8 BT" N31°W, 12.25'.
 NOTE: BURIED ORIGINAL STONE IN STONE MOUND BUILT AROUND NEW MON.
 T2N
 1/4 S9
 S8 | S9
 R8E
 LS 2209 1990
- 8 **SET SECTION CORNER:** BEARING AND DISTANCE FROM FOUND STONE MOUND AND CLOSED ON (FB2/PG41) THE SENIOR SECTION LINE OF SEC. 9, FOUND GLO ORIGINAL STONE MOUND 3'X11/2'X1' HIGH, ORIGINAL STONE FOR SECTION CORNER GONE (GLO:STONE MOUND BEARS S48°E, 7.26')
REMONUMENTED: SET A 2 1/2"X3/8" USDA ALUM. MON. WITH 3/4" ALUM. CAP STAMPED:
NEW BT'S: A 13" DOUGLAS FIR SCRIBED "S5 BT" N15°W, 2.50'; A 6" DOUGLAS FIR SCRIBED "S9 BT" S36°E, 9.30'; A 15" FIR SCRIBED "S8 BT" S80°W, 17.27'; A 14" FIR SCRIBED "S5 BT" N88°W, 10.0'.
 ABOVE-DESCRIBED ORIGINAL STONE MOUND BEARS S11°40'53"E, 4.99'.
 T2N R8E
 S5 | S9
 S8
 LS 2209 1990



I, KARL W. FERRIER, A REGISTERED LAND SURVEYOR IN THE STATE OF OREGON, HEREBY CERTIFY THAT THIS PLAT, SHEETS 1 THRU 4, AND NOTES THEREON ARE A CORRECT REPRESENTATION OF A SURVEY I PERFORMED AT THE REQUEST OF THE USDA FOREST SERVICE IN ACCORDANCE WITH THE STATUTES OF THE STATE OF OREGON AND THE ARTICLES OF MY CONTRACT.

Karl W. Ferrier
 KARL W. FERRIER, L.S. 2209

EXAMINED AND ACCEPTED FOR USDA-FOREST SERVICE THIS 14th DAY OF Sept, 1992.
John C. Richmond COR

I CERTIFY THAT THE SURVEY WAS PERFORMED AT THE REQUEST OF THE NATIONAL FOREST SUPERVISOR *M+Hood NF*

Mike Edmister 9/10/93
 SIGNATURE DATE

AMENDED DRAWING AUG. 26, 1993

KARL W. FERRIER REG. LAND SURVEYOR
 OREGON & WASHINGTON
 P.O. BOX 1159 (1405 BAY AVE.) OCEAN PARK, WA. 98640
 (206) 665-4550

DWN BY J.A. Smith	DATE July 8, 1992	CHKD BY K.W.F.
CREW CHIEF K.W. Ferrier	SCALE 1" = 500'	SHEET 2 OF 4

REGISTERED PROFESSIONAL LAND SURVEYOR

Karl W. Ferrier
 OREGON 1993
 KARL W. FERRIER 2209

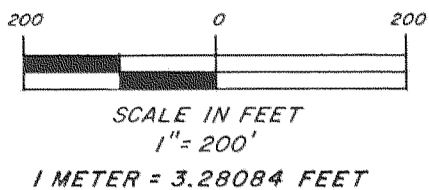
FILED
 SEP 21, 1993
Richard A. Small
 COUNTY SURVEYOR

93070

RECORD OF SURVEY OF THE:

NE 1/4 OF THE NW 1/4 OF FRACTIONAL SECTION 8, TWP. 2 N, RGE. 8 E, W.M.; SOUTH 1/2 OF THE SW 1/4 OF THE SW 1/4 OF THE SE 1/4 OF FRACTIONAL SECTION 5, TWP. 2 N, RGE. 8 E, W.M. AND TAX LOT 800 IN THE NW 1/4 OF THE SE 1/4 OF FRACTIONAL SECTION 5, TWP. 2 N, RGE. 8 E, W.M. ALL IN HOOD RIVER COUNTY, OREGON. CONTRACT No. 53-05K3-9-06075e DEC. 1989 THRU JULY 1992

SHEET 3 OF 4



LEGEND:

- = EXISTING CORNER MONUMENT LEFT IN ORIGINAL CONDITION
- ⊙ = OBLITERATED OR LOST PUBLIC LANDS SURVEY CORNER DUE TO CONSTRUCTION OF BONNEVILLE DAM AND SUBSEQUENT FLOODING
- = SET A 1/2" X 3/8" USDA ALUM. MON. WITH 3/4" ALUM. CAP UNLESS OTHERWISE NOTED IN THE CORNER NOTES
- ◁ = ACCENTS SECTION CORNER, CORRESPONDS WITH ABOVE SYMBOLS
- ⑩ = REFER TO CORNER NOTE INDICATED BY THE NUMBER
- = BOUNDARY LINE POSTED WITH 6" CARSONITE POST, AND TREES WITHIN THREE FEET OF THE LINE BLAZED
- ⊗ = WITNESS CORNER LOST DUE TO CHANNEL SCOUR, RESET

NOTE:

ALL BEARING TREES FOUND OR NEW BEARING TREES WERE PAINTED WITH RED PAINT ALONG THE FACE OR SCRIBE AND A 6" BAND WITHIN 6' FROM THE GROUND. DIAMETERS OF BEARING TREES WERE MEASURED ABOUT 4.5' ABOVE THE GROUND (DBH), BEARINGS AND DISTANCE TO THE BEARING TREES WERE MEASURED TO THE CENTER OF THE TREE ABOUT ONE FOOT ABOVE THE ROOT CROWN. AT NEW BEARING TREES A BRASS SHINER, MARKED "LS 2209" WAS PLACED BETWEEN THE "BT", AND AN ALUMINUM NAIL WAS DRIVEN AT THE CENTER OF THE TREE, ON THE SIDE FROM WHICH THE DISTANCE CAN BE MEASURED. A 54-3 SIGN WAS PLACED IN FRONT OF THE TREE, FACING THE MONUMENT AND A 54-9 SIGN WAS PLACED ON THE BACK.

MAGNETIC DECLINATION AVERAGED ABOUT 22°00' E

SEE SHEET 1 OF 4 FOR SURVEY NARRATIVE AND HISTORY OF SURVEYS.

EXPLANATION OF PARENTHESIS:

- (D-) = DEED BEARING AND DISTANCE, VOL. 52, PAGE 72
- () = BEARING AND DISTANCE OF W. CAMPBELL IN FEET & CHAINS, 1897
- (A-) = " " " " US ARMY CORP, 1939

NOTE: SUBDIVISION OF SECTION 5

THE SUBDIVISION OF THE SE 1/4 OF SECTION 5, TO LOCATE THE BOUNDARIES REQUIRED, WAS CALCULATED BASED ON FOUND MONS. AND THE US ARMY CORP SUBDIVISION OF THE SECTION. SINCE THE ORIGINAL SURVEY OF SEC. 5 BY R. SHORT IN 1860, THE SUBSEQUENT COMPLETION OF SAID SEC. 5 BY W. CAMPBELL IN 1897 AND THE ABOVE-MENTIONED SUBDIVISION BY THE US ARMY CORP THERE HAVE BEEN MANY CHANGES, THE CONSTRUCTION OF TWO MAJOR HIGHWAYS AND CONSTRUCTION OF THE BONNEVILLE DAM. MOST OF THE MONUMENTS SET BY THE ABOVE-MENTIONED SURVEYS WERE "LOST OR OBLITERATED" DUE TO THESE EVENTS. RELYING ON THE FOUND SE 1/16th SET BY THE ARMY CORP AND THE SURVEYING PRINCIPLE OF "NEAREST & BEST EVIDENCE" I SUBDIVIDED THE SE 1/4 AS SHOWN AFTER AN EXHAUSTIVE SEARCH OF THE ENTIRE SECTION.

THE N-S CENTERLINE OF SEC. 5, WAS CALCULATED BASED ON HOLDING THE FOUND SW 1/4 CORNER AND ROTATING THE ARMY CORP BEARING 00°02'42" LEFT, WHICH IS A MEAN OF MY FINDINGS WITHIN THE SE 1/4.

THE E-W CENTERLINE OF SEC. 5 WAS CALCULATED BY HOLDING ON THE ARMY CORP POSITION OF THE W 1/4, BASED ON THE FOUND REFERENCES, AND CALCULATING A PROPORTIONED E 1/4 CORNER BASED ON HOLDING THE FOUND SECTION CORNER TO 4 & 9 AND A PROPORTIONED NE CORNER OF SEC. 5. SEE SKETCH SHEET 4 OF 4 FOR RETRACEMENT OF PORTIONS OF TOWNSHIP LINE. IT SHOULD BE NOTED THAT FROM THE NE CORNER OF SEC. 5 AND THE 1/4 CORNER TO 34 & 3, MY DISTANCE COMPARES WITH CAMPBELL'S WITHIN 16.07 FEET IN ONE & ONE HALF MILES, AND IN A N-S DIRECTION MY DISTANCE COMPARES WITH THE ARMY CORP WITHIN 6.26 FEET IN THREE QUARTER OF A MILE, WHICH I BELIEVE IS ACCEPTABLE TO FURTHER SUBDIVIDE THE SECTION. I DID NOT ATTEMPT TO RECONCILE EACH INDIVIDUAL DIFFERENCE BETWEEN ONE SURVEY AND ANOTHER, SINCE WITHOUT A COMPLETE RECORD IT IS IMPOSSIBLE, HOWEVER I BELIEVE I CHOSE AND HELD WITH THE "NEAREST AND BEST EVIDENCE" AVAILABLE. THE 1957 PERKINS SURVEY WAS DISREGARDED, SINCE IT MERELY RECITED A RECORD DISTANCE, AND HE DID NOT LOCATE THE NORTHEAST CORNER OF SECTION 5.

NOTE: TAX LOT 800

TAX LOT 800 IS A 40' X 80' TRACT WITHIN THE HIGHWAY RIGHT-OF-WAY, SAID TAX LOT IS DESCRIBED BY DEED RECORDED IN VOLUME 52, PAGE 72, HOOD RIVER DEED RECORDS. I CALCULATED THE CORNERS OF THE LOT BASED ON THE FOUND RIGHT-OF-WAY MONUMENTS AND SET THE CORNERS AS SHOWN. SEE CORNER NOTE 20 FOR MONUMENT SET SE CORNER, ALL OTHER CORNERS SET 5/8" X 30" IRON ROD WITH CAP MARKED LS 2209.

I, KARL W. FERRIER, A REGISTERED LAND SURVEYOR IN THE STATE OF OREGON, HEREBY CERTIFY THAT THIS PLAT, SHEETS 1 THRU 4, AND THE NOTES THEREON ARE A CORRECT REPRESENTATION OF A SURVEY I PERFORMED AT THE REQUEST OF THE USDA FOREST SERVICE IN ACCORDANCE WITH THE STATUTES OF THE STATE OF OREGON AND THE ARTICLES OF MY CONTRACT.

Karl W Ferrier
KARL W. FERRIER, LS 2209

EXAMINED AND ACCEPTED FOR USDA-FOREST SERVICE
THIS 7th DAY OF Sept, 1993.
John C. Reckman COR

I CERTIFY THAT THE SURVEY WAS PERFORMED AT THE REQUEST OF THE NATIONAL FOREST SUPERVISOR *Mt Hood NF*

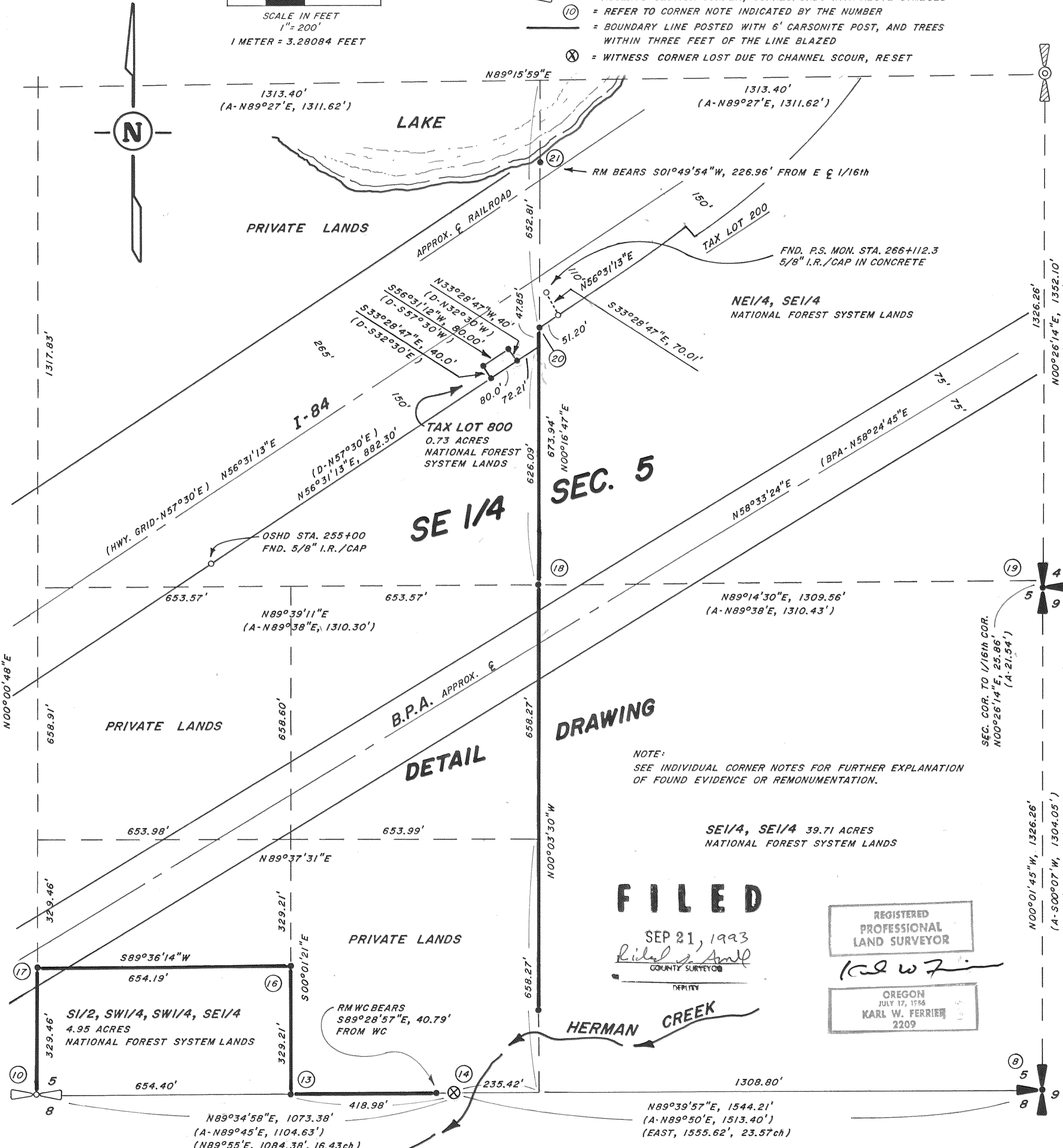
Mike Edgington 9/10/93
SIGNATURE DATE

AMENDED DRAWING AUG. 26, 1993

KARL W. FERRIER REG. LAND SURVEYOR
OREGON & WASHINGTON
P.O. BOX 1159, (1405 BAY AVE.) OCEAN PARK, WA. 98640
(206) 665-4550

DWN BY J.A. Smith	DATE July 8, 1992	CHKD BY K.W.F.
CREW CHIEF K.W. Ferrier	SCALE 1" = 200'	SHEET 3 OF 4

93070



NOTE:
SEE INDIVIDUAL CORNER NOTES FOR FURTHER EXPLANATION OF FOUND EVIDENCE OR REMONUMENTATION.

FILED

SEP 21, 1993
L. J. Smith
COUNTY SURVEYOR

REGISTERED
PROFESSIONAL
LAND SURVEYOR

OREGON
JULY 17, 1986
KARL W. FERRIER
2209

HERMAN CREEK

14E235

IVOR McCRAYS INC.

RECORD OF SURVEY OF THE

NE 1/4 OF THE NW 1/4 OF FRACTIONAL SECTION 8, TWP. 2 N, RGE. 8 E, W.M.; SOUTH 1/2 OF THE SW 1/4 OF THE SW 1/4 OF FRACTIONAL SECTION 5, TWP. 2 N, RGE. 8 E, W.M. AND TAX LOT 800 IN THE NW 1/4 OF THE SE 1/4 OF FRACTIONAL SECTION 5, TWP. 2 N, RGE. 8 E, W.M. ALL IN HOOD RIVER COUNTY, OREGON. CONTRACT No. 53-05K3-9-060754

DECEMBER 1989 THRU JULY 1992 SHEET 4 OF 4, CORNER NOTES

- 9 FOUND ONE SIXTEENTH CORNER:
(FB1/PG7) Found 3 1/4" USDA Brass Cap on 2" Iron Pipe in Stone Mound
1 1/2'x1' High Stamped: T2N R8E
BT'S Found: A 9" Fir Visible Scribe "W1/16 S8 BT" Bears S06-30E 56.26'; An 11 1/2" Douglas Fir with Healed Face Bears N26-15E 51.23'.
S8
LS 896
1987
- 10 FOUND ONE QUARTER CORNER:
(FB1/PG13) Found a 3 1/4" USDA Brass Cap on 2" Iron Pipe Stamped: T2N R8E
BT'S Found: A 20" Douglas Fir with Healed Face Bears S79-00E 6.0'; a 16" Douglas Fir with Healed Face bears N07-30W 7.2'.
1/4 S5
S8
1987 LS 896
- 11 SET NW ONE SIXTEENTH:
(FB4/PG41) Set 2 1/2"x 36" USDA Alum. Mon. with 3 1/4" Alum. Cap Stamped: T2N R8E
BT'S Marked: An 18" Fir Scribed "1/16 S8 BT" Bears N78-00W 37.64'; S8
A 12" Fir Scribed "1/16 S8 BT" Bears N26-00W 23.68'. NW 1/16
GL4 GL3
LS2209 1990
- 12A SET CENTER ONE QUARTER CORNER:
(FB4/PG43) Set a 2 1/2"x 36" USDA Alum. Mon. with a 3 1/4" Alum. Cap Stamped: T2N R8E
BT'S Marked: A 26" Fir Scribed "1/4 S8 BT" Bears S63-30E 33.83';
A 24" Fir Scribed "1/4 S8 BT" Bears S28-00W 25.14'; C1/4
A 24" Fir Scribed "1/4 S8 BT" Bears S87-30W 15.32'; S8
The CN 1/16th Section 8 (see 12B) Bears N00-44E 17.6'. LS2209 1990
- 12B SET CENTER NORTH ONE SIXTEENTH CORNER:
(FB4/PG43) Set a 2 1/2"x 36" USDA Alum. Mon. with a 3 1/4" Alum. Cap Stamped: T2N R8E
BT'S Marked: A 16" Alder Scribed "1/16 S8 BT" Bears N81-00W 13.64';
A 14" Alder Scribed "1/16 S8 BT" Bears N03-00W 24.45'. CN 1/16
GL3 GL2
S8
LS2209 1990
- 13 SET WEST EAST ONE SIXTYFOURTH CORNER:
(FB2/PG46) Set a 2 1/2"x 36" USDA Alum. Mon. with a 3 1/4" Alum. Cap Stamped: T2N
BT'S Marked: A 34" Fir Scribed "1/64 S8 BT" Bears S32-00W 35.00';
A 14" Fir Scribed "1/64 S5 BT" Bears N29-00W 38.15'. W-E S5
1/64
S8
R8E
LS2209 1990
- 14 SET RM TO WITNESS CORNER: Calc WC Bears N89-28-57E 40.79'
(FB2/PG47) Set a 2 1/2"x 36" USDA Alum. Mon. with a 3 1/4" Alum. Cap Stamped: T2N
BT'S Marked: A 10" Fir Scribed "RM WC S8 BT" Bears S19-00W 13.19'; RM WC
An 18" Fir Scribed "RM WC S5 BT" Bears N05-00W 32.5'; S5 N89-29E
New Right Bank of Herman Creek Bears East 30.0'. S8 40.8
Original Witness Corner and its accessories would be in R8E
present location of Herman Creek. LS2209 1990
- 15 SET RM TO EAST SIXTEENTH CORNER: Calc E 1/16th Bears S00-35-28E 206.17'
(FB2/PG47) Set a 2 1/2"x 36" USDA Alum. Mon. with a 3 1/4" Alum. Cap Stamped: T2N
BT'S Marked: A 7" Fir Scribed "RM 1/16 S5 BT" Bears S59-30E 8.77'; RM
A 7" Fir Scribed "RM 1/16 S5 BT" Bears S77-30W 4.51'. E1/16 S5
E 1/16th to Section 5 & 8 would be on steep slope of "TOWER ROCK". S8
LS2209 1990
- 16 SET CENTER SOUTH SOUTH SOUTHWEST SOUTHEAST ONE TWO HUNDRED AND FIFTYSIXTH CORNER:
(FB3/PG15) Set a 2 1/2"x 36" USDA Alum. Mon. with a 3 1/4" Alum. Cap Stamped: S5
BT'S Marked: A 6" Fir Scribed "1/256 S5 BT" Bears S71-00W 20.30'; S5
A 6" Fir Scribed "1/256 S5 BT" Bears N04-00W 17.90'. CSS
SWSE 1/256
LS 2209 1990
- 17 SET RM FOR CENTERLINE SOUTH SOUTH ONE TWO HUNDRED AND FIFTYSIXTH CORNER:
(FB3/PG15) Set a 3 1/4"x 3 1/4" USDA Brass Rock Mon. in Concrete Stamped: RM S00-01W
BT'S Marked: An 18" Fir Scribed "RM 1/256 S5 BT" Bears S82-00E 52.53'; S5 0.46'
A 22" Fir Scribed "RM 1/256 S5 BT" Bears S20-00W 48.67'. C
SS 1/256
C
LS2209 1990
- Note: Brass Cap in Concrete is set in a 5' Diameter Boulder which is raised slightly above the ground.
- 18 FOUND SOUTHEAST ONE SIXTEENTH CORNER:
(FB2/PG23) Found a 3/4" Iron Pipe Set by US Army Corp;
REMONUMENTED: Set a 2 1/2"x 36" USDA Alum. Mon. with a 3 1/4" Alum. Cap Stamped: T2N R8E
BT'S Marked: A 16" Maple Scribed "SE 1/16 S5 BT" Bears N05-00E 24.7'; A 26" Alder Scribed "SE 1/16 S5 BT" Bears N65°00'W, 15.89'. SE1/16 S5
LS2209 1990

19 FOUND SECTION CORNER:
(FB1/PG35) Found original 22"x12"x8" Stone with "X" on top 5 notches on the South Face and 4 Notches on the East Face.
BT'S Found: A 31" Fir Stump (original) Bears N43-00E 38.97'; A 5" Fir Scribed "X BT" Bears S72-00E 11.19'; A 28" Fir Stump (original) Bears S59-30E 8.80'; An 11" Fir with Healed Face Bears S28-00E 11.0'; A 9" Fir with Healed Face Bears S65-00W 21.00'; A 16" Fir Scribe Visible "T2N R8E S5 BT" Bears N23-30W 25.28'.
REMONUMENTED: Set a 2 1/2"x 36" USDA Alum. Mon. with a 3 1/4" Alum. Cap Stamped: T2N R8E
BT'S NOT INDICATED AS "ORIGINAL" ARE HOOD RIVER COUNTY NEW BT'S
Note: Buried original stone in stone mound built around new mon. S5 S4
LS2209 1989 S9

20 SET ANGLE POINT TO TAX LOT 200:
(FB3/PG17) Set a 2 1/2"x 36" USDA Alum. Mon. with a 3 1/4" Alum. Cap Stamped: S5
OSHD
AP
TAX LOT 200
LS2209 1990

21 SET RM EAST CENTER 1/16TH:
(FB3/PG17) Set a 3 1/4"x 3 1/4" USDA Brass Rock Mon. in Concrete
Stamped: RM S5
EAST 1/16
1.5 N01-50E 227.0'
LS2209 1990

22 SET RM TO ONE QUARTER CORNER:
(FB3/PG11) Set a 2 1/2"x 36" USDA Alum. Mon. with a 3 1/4" Alum. Cap Stamped: T2N
NO TRACE OF THE 1/4 CORNER, OTHER THAN THAN THE IRON PIPE AND FIR STUMP, DESCRIBED BELOW, WERE FOUND. 1/4 RM
S6153.4 S5
R8E
LS2209 1990

BT's Marked: A 4" Fir Scribed "X BT" Bears N83-00E 41.74';
A 4" Fir Scribed "X BT" Bears N49-00W 13.85'.
Original One Quarter Corner is now submerged due to Bonneville Dam from which the above-described RM Bears S43-44E 153.4'; A 1" Iron Pipe Set by the US Army Corp Bears S43-44E 288.7'; A 20" Fir Stump Marked by US Army Corp Bears S43-44E 334.89'.

23 SET SECTION CORNER:
Set a 2 1/2"x36" USDA Alum. Mon with a 3 1/4" Alum. Cap Stamped: T3N R8E
A 20" HARDWOOD (SPECIES UNKNOWN), with five stems growing out of the bole, Scribed "T3N R8E S32 BT" Bears N85-00W 28.04'; S32 S33
A 12" Alder Scribed "T2N R8E S4 BT" Bears S55-00E 65.30'; Set RM a 2 1/2"x36" USDA Alum. Mon with a 3/4" Alum. Cap Stamped: T2N R8E
LS2209 1992
RM BEARS N12-49E 22.0'; T3N R8E
RM S34 S12-49W
22.0

SET RM A 3 1/4" USDA ALUM PEDASTAL MON. IN ASPHALT ROAD STAMPED: RM BEARS S12-49W 38.6'. T2N R8E
RM S5
N12-49E
38.6

ORIGINAL SECTION CORNER IS "LOST" DUE TO CONSTRUCTION OF THE DIKE ROAD AND BONNEVILLE DAM. SEE NOTE SHEET THREE AND SKETCH BELOW. LS2209 1992

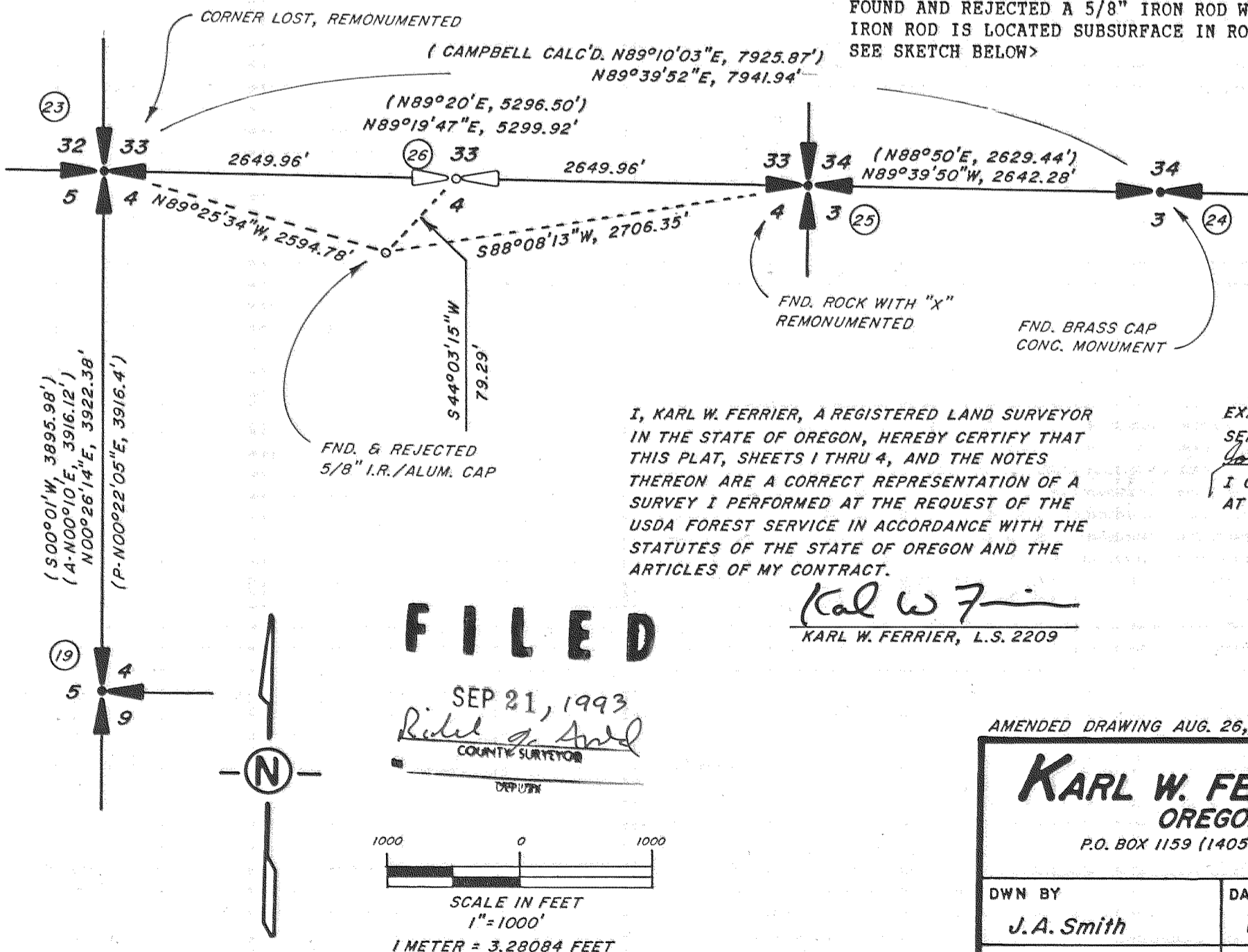
24 FOUND 1/4 SECTION CORNER A 3" BRASS CAP IN AN 8" X 8" CONCRETE MON. STAMPED: US ARMY CORP
FND 10" POWER-POLE BEARS N11-00E 33.25'; T3N R8E
WITH LOCATION TAG; FND A 22" FIR, HEALED FACE BEARS S11-00E 19.40'; 34
1/4 *
3

25 FOUND SECTION CORNER A 14" X 14" X 14" BASALT STONE WITH "X" SCRIBED ON TOP, ALSO FOUND A 49" FIR, SLIGHT FACE WITH LATH NAILED TO IT BEARS S15-00W 25.3'; FOUND 20" FIR WITH HEALED "X" ON FACE BEARS N48-00E 30.7'; BT'S MARKED: A 10" FIR SCRIBED "T2N R8E S3 BT" BEARS S48-00E 35.92'; A 35" FIR SCRIBED "T3N R8E S33" BEARS N18-00W 64.65'. BURIED ORIGINAL STONE and Set a 2 1/2"x36" USDA Alum. Mon with a 3 1/4" Alum. Cap Stamped: T3N R8E
S33 S34
S4 S3
LS2209 T2N R8E 1992

26 1/4 CORNER
FOUND AND REJECTED A 5/8" IRON ROD WITH AN 1 1/2" ALLOY CAP STAMPED: 33/4
IRON ROD IS LOCATED SUBSURFACE IN ROAD, 12.7' NORTH OF CENTER-LINE. SEE SKETCH BELOW

LEGEND:

- = SET 1/2"x36" USDA ALUM. MON. WITH 3/4" ALUM. CAP UNLESS OTHERWISE NOTED IN THE CORNER NOTES
- ◀ = ACCENTS SECTION CORNER
- Ⓣ = REFER TO CORNER NOTE INDICATED BY NUMBER



REGISTERED PROFESSIONAL LAND SURVEYOR
Karl W. Ferrier
OREGON JULY 17, 1955
KARL W. FERRIER 2209

I, KARL W. FERRIER, A REGISTERED LAND SURVEYOR IN THE STATE OF OREGON, HEREBY CERTIFY THAT THIS PLAT, SHEETS 1 THRU 4, AND THE NOTES THEREON ARE A CORRECT REPRESENTATION OF A SURVEY I PERFORMED AT THE REQUEST OF THE USDA FOREST SERVICE IN ACCORDANCE WITH THE STATUTES OF THE STATE OF OREGON AND THE ARTICLES OF MY CONTRACT.

Karl W. Ferrier
KARL W. FERRIER, L.S. 2209

EXAMINED AND ACCEPTED FOR USDA-FOREST SERVICE THIS 14th DAY OF Sept 1993.
John C. Richardson COR
I CERTIFY THAT THE SURVEY WAS PERFORMED AT THE REQUEST OF THE M+Hood
NATIONAL FOREST SUPERVISOR

Mike Elvington 9/10/93
SIGNATURE DATE

FILED
SEP 21, 1993
Rick A. Ford
COUNTY SURVEYOR
DEPUY

AMENDED DRAWING AUG. 26, 1993

KARL W. FERRIER REG. LAND SURVEYOR OREGON & WASHINGTON
P.O. BOX 1159 (1405 BAY AVE.) OCEAN PARK, WA. 98640
(206) 665-4550

DWN BY <i>J.A. Smith</i>	DATE July 8, 1992	CHKD BY <i>K.W.F.</i>
CREW CHIEF <i>K.W. Ferrier</i>	SCALE 1"=1000'	SHEET 4 OF 4

93070