

LOLO PASS
CADASTRAL SURVEY
FOR
LONGVIEW FIBRE CO.
&
U.S.D.A. FOREST SERVICE

BY

TERRA SURVEYING

P.O. BOX 617
HOOD RIVER, OREGON 97031
(503) 386-4531

DATE - JULY-DECEMBER, 1992
SCALE 1" = 600'
BASIS OF BEARINGS - RIG-LOLO CADASTRAL SURVEY
PROJECT NO. 9228

SURVEY LOCATION
WEST ONE HALF OF SECTION 26 AND THE
NORTH ONE HALF OF SECTION 35, T1S R6E, W.M.,
HOOD RIVER COUNTY, OREGON

LEGEND

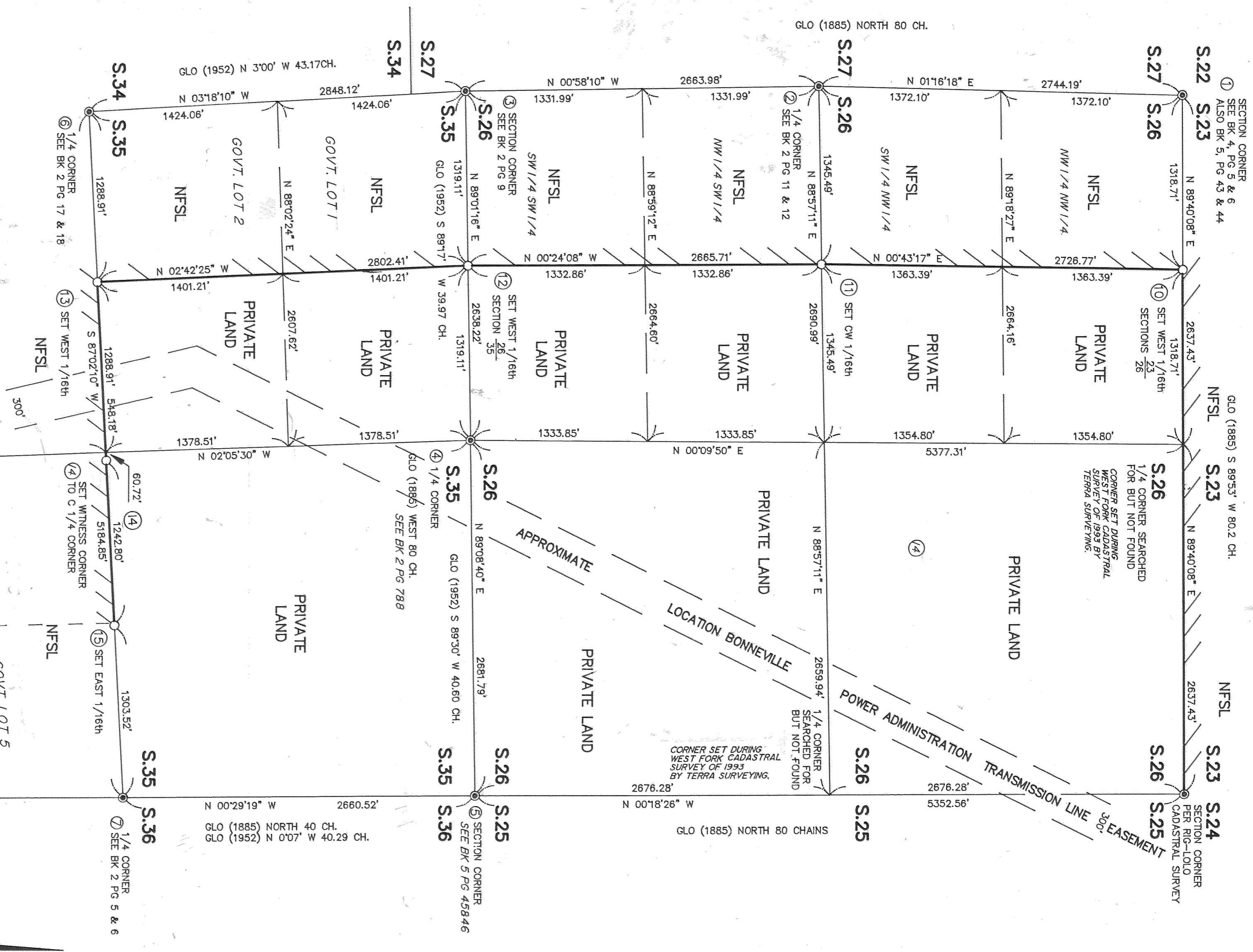
- Ⓝ CORNER NUMBER REFERENCED ON PAGE 2
- Ⓞ MONUMENT FOUND AS NOTED WITH THE CORNER INFORMATION ON PAGE 2
- SET 2 1/2" x 30" ALUMINUM PIPE AND CAP WITH A MAGNET UNDERNEATH THE MONUMENT. SEE COUNTY CORNER CARDS FOR EVIDENCE AND ACCESSORIES.
- BK # PG # = FIELD BOOK & PAGE

PROPERTY LINE BLAZED, PAINTED & POSTED WITH 6 FT POLYMER POSTS WITH DECAL 54-2

CERTIFICATE OF SURVEY

I, ROY O. GAYLORD, A REGISTERED LAND SURVEYOR IN THE STATE OF OREGON, HEREBY CERTIFY THAT THIS PLAT AND THE NOTES HEREON, OR ATTACHED, ARE A CORRECT REPRESENTATION OF A SURVEY I PERFORMED DURING JULY THRU DECEMBER, 1992, FOR THE U.S.D.A. FOREST SERVICE AND LONGVIEW FIBRE CO., IN ACCORDANCE WITH THE STATUTES OF THE STATE OF OREGON AND WITH THE ARTICLES OF MY CONTRACT.

ROY O. GAYLORD - REGISTERED LAND SURVEYOR 1815



REFERENCES

- GLO PLAT SURVEYED BY SAMUEL W. LACKLAND IN 1895 AND APPROVED JULY 30, 1895
- GLO PLAT SURVEYED BY LEONARD CARTER AUGUST 15, 1940 THRU SEPTEMBER 30, 1941 AND APPROVED FEBRUARY 18, 1952
- RIG-LOLO CADASTRAL SURVEY BY TERRA SURVEYING DECEMBER 1987

EXAMINED AND ACCEPTED FOR THE U.S.D.A. FOREST SERVICE THIS _____ DAY OF _____ 1993
C.O.R.

I CERTIFY THAT THIS SURVEY WAS PERFORMED AT THE REQUEST OF THE NATIONAL FOREST SUPERVISOR

SIGNATURE _____ DATE _____



GRAPHIC SCALE
(IN FEET)
1 inch = 600 ft.

FILED

NOV 12, 1993
Roy O. Gaylord
COUNTY SURVEYOR

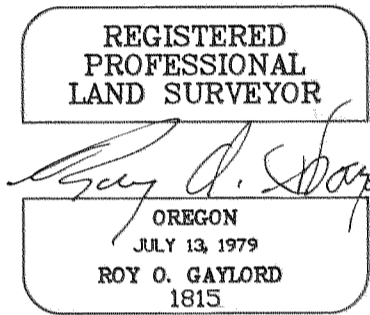
LOLO PASS
CADASTRAL SURVEY
FOR
LONGVIEW FIBRE CO.
&
U.S.D.A. FOREST SERVICE

BY
TERRA SURVEYING
P.O. BOX 617
HOOD RIVER, OREGON 97031
(503)386-4531

DATE: JULY - DECEMBER 1992
SCALE: 1"=600'
BASIS OF BEARINGS: RIG-LOLO CADASTRAL SURVEY
PROJECT NUMBER: 9228

SURVEY LOCATION

WEST ONE HALF OF SECTION 26 AND THE NORTH ONE
HALF OF SECTION 35, T1S, R8E, W.M., HOOD RIVER
COUNTY, OREGON



① FOUND: 2 1/2" BRASS CAP, SET BY RESURVEY
DATED 2-18-1952, ON EAST (DOWNHILL) SIDE OF A
3'x5'x1' HIGH ROCK MOUND. CAP STAMPED:
T1S R8E ORIGINAL BT'S:
S22|S23 10" HEM, N16°W @ 16.5', ROTTED, 7" HIGH
S27|S26 13" HEM, N11 1/4°E @ 138.6', NOW 24"
1940 MARKED:
10" NOBLE FIR, N73°W @ 30.7', SCRIBED "S27 BT", WITH WASHER
14" D-FIR, N16°E @ 6.5', SCRIBED "S23 BT", WITH WASHER
13" D-FIR, S29 1/2°W @ 16.3', SCRIBED "S27 BT", WITH WASHER
9" D-FIR, S20 1/2°E @ 8.6', SCRIBED "S26 BT", WITH WASHER
NOTE: EACH TREE SCRIBED "T1S R8E"

② FOUND: 2 1/2" BRASS CAP, SET BY RESURVEY
DATED 2-18-1952, ON EAST SIDE OF ROCK MOUND.
CAP STAMPED:
1/4 S26 ORIGINAL BT'S:
1940 30" NOBLE FIR, N64°E @ 73 LKS, SCRIBING VISIBLE, NOW 34"
28" NOBLE FIR, S45°E @ 11 LKS, SCRIBING VISIBLE, NOW DEAD
MARKED:
27" NOBLE FIR, S5 3/4°E @ 42.5', SCRIBED "S26 1/4 BT",
WITH WASHER
NOTE:
CUT DOWNED TREE AWAY FROM MONUMENT AND RESET STONES
AROUND MONUMENT.
OLD LINE BLAZING NORTH AND SOUTH FROM CORNER

③ FOUND: 2 1/2" BRASS CAP, SET BY RESURVEY
DATED 2-18-1952. CAP STAMPED:
T1S ORIGINAL BT'S:
S26 27" D-FIR, S57°E @ 71 LKS, BLAZE HEALED, NOW 36"
S27 30" D-FIR, N14°E @ 90 LKS, BLAZE HEALED, NOW 38"
S35 27" HEM, S30 3/4°W @ 27.5', USFS BT TAG (54-3) ATTACHED
R8E 34" D-FIR, S9 1/2°W @ 45.0', USFS LOCATION TAG (54-5)
1940 ATTACHED, MARKED "1961 JK"
NOTE:
FOUND OLD LINE BLAZING NORTH & SOUTH OF CORNER

④ FOUND: 2 1/2" BRASS CAP, SET BY RESURVEY
DATED 2-18-1952, ON SOUTHEAST SIDE OF 3'x2 1/2'
HIGH STONE MOUND. CAP STAMPED:
1/4 S26 ORIGINAL BT'S:
S35 NONE FOUND
1940 MARKED:
12" HEM, N0°E @ 7.0', SCRIBED "S26 1/4 BT", WITH WASHER
22" D-FIR, S 22 1/2°W @ 6.2', SCRIBED "S35 1/4 BT", WITH WASHER

⑤ FOUND: 2 1/2" BRASS CAP, SET BY RESURVEY
DATED 2-18-1952, ON EAST SIDE OF 2 1/2'x2 1/2'
HIGH STONE MOUND (2' TO CENTER). CAP STAMPED:
T1S R8E ORIGINAL BT'S:
S26 S25 3" WHITE PINE, DID NOT FIND
S35 S36 5" WHITE PINE, DID NOT FIND
1940 4" HEM, N77°E @ 79 LKS, BLAZE HEALED, NOW 12"
MARKED:
20" WHITE FIR, S38 3/4°W @ 8.4', SCRIBED "S35 BT", WITH WASHER
NOTE: EACH TREE SCRIBED "T1S R8E"

⑥ FOUND: 2 1/2" BRASS CAP, SET BY RESURVEY
DATED 2-18-1952, WITH 12"x8"x3" PYRAMID STONE
SCRIBED "1/4" ALONGSIDE. CAP STAMPED:
1/4 S35 ORIGINAL BT'S:
1940 25" NOBLE FIR, N31 1/2°E @ 158 LKS, NOW 29"
28" NOBLE FIR, S60°E @ 84 LKS, NOW 35"
NOTE:
OLD LINE BLAZING RUNNING NORTH & SOUTH

⑦ FOUND: 2 1/2" BRASS CAP, SET BY RESURVEY
DATED 2-18-1952, 2.5' EAST OF A 2.5' HIGH
STONE MOUND. CAP STAMPED:

1/4 ORIGINAL BT'S:
S35 S36 5" WHITE FIR, DID NOT FIND
1940 50" CEDAR STUMP, S67°W @ 10 LKS, SCRIBING VISIBLE
18" CEDAR S80 1/4°W @ 220 LKS, BLAZE HEALED, AX MARKS
VISIBLE, NOW 32"
MARKED:
9" WHITE FIR, N66°E @ 13.0', SCRIBED "S36 1/4 BT", WITH WASHER

⑧ FOUND: 2 1/2" BRASS CAP, SET BY RESURVEY
DATED 2-18-1952, ON SOUTH SIDE OF 2'x1'
HIGH STONE MOUND. CAP STAMPED:

1/4 S35 ORIGINAL BT'S:
1940 NONE FOUND
MARKED:
8" HEM, N58°E @ 5.6', SCRIBED "S35 1/4 BT", WITH WASHER
NOTE:
NO OTHER TREES AVAILABLE DUE TO POWER LINE CORRIDOR

⑨ FOUND: 2 1/2" BRASS CAP, SET BY RESURVEY
DATED 2-18-1952, WITH ORIGINAL STONE
ALONGSIDE. CAP STAMPED:
T1S R8E ORIGINAL BT'S:
S35 S36 20" D-FIR, N33°W @ 75 LKS, NOW 21"
1940 FOUND 3 LARGE STONES SOUTH OF MONUMENT
MARKED:
18" HEM, S27°W @ 2.2', SCRIBED "S1 BT"
NOTE:
RAISED STONE MOUND ALONGSIDE WITH POLYMER
POST IN CENTER OF MOUND
NOTE: EACH TREE SCRIBED "T1S R8E"

⑩ SET:
MONUMENT STAMPED:
T1S R8E
W1/16 S23
S26
LS1815 1992 BK 3 PG 9

MARKED:
14" D-FIR, N74 1/2°W @ 12.6', SCRIBED "S23 W1/16 BT", WITH WASHER
17" D-FIR, S33 1/4°W @ 23.4', SCRIBED "S26 W1/16 BT",
WITH WASHER
RAISED MOUND OF STONE ALONGSIDE

⑪ SET:
MONUMENT STAMPED:
T1S R8E
S26
C-W 1/16
LS1815 1992

MARKED:
24" D-FIR, S5 1/4°W @ 46.0', SCRIBED "S26 CW1/16 BT", WITH WASHER
12" HEM, S70°W @ 10.6', SCRIBED "S26 CW1/16 BT", WITH WASHER
RAISED MOUND OF STONE ALONGSIDE

⑫ SET:
MONUMENT STAMPED:
T1S R8E
W1/16 S28
S35
LS1815 1992

MARKED:
16" D-FIR, S24 1/2°E @ 6.2', SCRIBED "S35 W1/16 BT", WITH WASHER
18" D-FIR, N62 1/2°W @ 36.8', SCRIBED "S26 W1/16 BT", WITH WASHER
RAISED MOUND OF STONE ALONGSIDE

⑬ SET:
MONUMENT STAMPED:
T1S R8E
S135
C-W1/16
LS1815 1992

MARKED:
10" WHITE FIR, N7°W @ 29.8', SCRIBED "S35 CW1/16 BT", WITH WASHER
13" HEM, S79 1/2°W @ 28.7', SCRIBED "S35 CW1/16 BT", WITH WASHER
RAISED MOUND OF STONE ALONGSIDE

⑭ SET:
MONUMENT STAMPED:
T1S R8E
S35
WC
60.72'
C1/4
LS1815 1992

MARKED:
14" HEM, S69 1/2°W @ 18.2', SCRIBED "S35 C1/4 WC BT X", WITH WASHER
13" HEM, N8°W @ 4.9', SCRIBED "S35 C1/4 WC BT X", WITH WASHER
RAISED MOUND OF STONE ALONGSIDE

⑮ SET:
MONUMENT STAMPED:
T1S R8E
S35
C-E1/16
LS1815 1992

MARKED:
7" D-FIR, S36 1/4°W @ 6.3', SCRIBED "S35 CE1/16 BT", WITH WASHER
SET 5/8" IRON ROD WITH RED PLASTIC CAP STAMPED "LS 1815",
S53 3/4°E @ 12.17'.
RAISED MOUND OF STONE ALONGSIDE

NARRATIVE

SECTION 26 AND THE EAST ONE HALF OF SECTION 35 WERE ORIGINALLY SURVEYED BY SAMUEL W. LACKLAND AND APPROVED JULY 30, 1885. PORTIONS OF SECTION 35 WERE SOLD TO THE STATE OF OREGON ON MARCH 19, 1909. THE BLM CONDUCTED A DEPENDENT RESURVEY OF THE WEST BOUNDARY OF SECTION 26 AND A COMPLETE RESURVEY OF SECTION 35 BY LEONARD CARTER IN 1940 AND 1941 BEING APPROVED FEBRUARY 18, 1952. THE U.S. FOREST SERVICE AND THE BONNEVILLE POWER ADMINISTRATION HELPED TO PERPETUATE THE SET CORNERS OF THESE TWO SECTIONS, THOUGH EXTENSIVE LOGGING HAD TAKEN PLACE OVER THE YEARS FROM 1940 TO DATE.

THE 1952 APPROVED PLAT, WITH VALUES FOR SECTION 35, WERE COMPASS ADJUSTED AND THE PLAT ACRES RETURNED AGREED WITH THE PLAT. A CHECK WAS MADE IN REGARDS TO THE PLACEMENT OF THE CENTER QUARTER OF SECTION 35 SINCE LAND HAD BEEN SOLD IN THIS SECTION PRIOR TO 1940. IT WAS FOUND ONLY A SMALL DISCREPANCY, (0.10'), EXISTED BETWEEN THE CENTER OF SECTION BY INTERSECTING STRAIGHT LINES BETWEEN THE QUARTER CORNERS OR BY TAKING ONE HALF THE DISTANCE BETWEEN THE NORTH AND SOUTH QUARTER CORNERS, AS ALLOWED BY THE MANUAL AT THAT TIME. I CHOSE TO ESTABLISH THE CORNER BY THE INSTRUCTIONS OF THE 1973 MANUAL BECAUSE THERE WAS NO EFFECT ON THE BONA FIDE RIGHTS OF THE PARTIES INVOLVED. ALSO, NO PHYSICAL EVIDENCE IN THE FIELD WAS FOUND TO CONTRADICT THIS DECISION.

EXTENSIVE CORNER SEARCHES WERE CONDUCTED FOR THE NORTH AND EAST QUARTER CORNERS ESTABLISHED IN 1885. LOGGING HAD BEEN CONDUCTED AT EACH OF THE CORNERS AND NO EVIDENCE WAS FOUND, THEREFORE, THEY WERE DECLARED LOST AND PROPORTIONED ACCORDINGLY. THE WEST 1/16 BETWEEN SECTIONS 26 AND 35 WAS FOUND TO BE COMMON AFTER COMPASS ADJUSTING THE 1953 PLAT. NO CONFLICT WAS FOUND BETWEEN THE 1885 AND THE 1953 LOCATIONS EVEN THOUGH SECTION 35 WAS LOTTED IN THE NORTHWEST QUARTER. NO OTHER DISCREPANCIES OR UNUSUAL CONDITIONS WERE FOUND DURING THE EXECUTION OF THIS SURVEY.

FOREST SERVICE ATTENTION SIGNS WERE PLACED ON THE BEARING TREES ON THE SIDE AWAY FROM THE CORNER, BEARING TREE SIGNS WERE PLACED ON THE BEARING TREES FACING THE CORNER, A 6 INCH STRIPE WAS PAINTED AROUND ALL BEARING TREES AND A 6 FOOT POLYMER POST WITH A FOREST SERVICE CORNER SIGN WAS PLACED BESIDE THE CORNER.

THE EQUIPMENT USED DURING THIS SURVEY WAS A TOPCON ITS-1B TOTAL STATION, 5 SECOND INSTRUMENT; A TOPCON GTS-10D GUPPY, 5 SECOND INSTRUMENT; AND A TOPCON GTS-302 TOTAL STATION, 1 SECOND INSTRUMENT.

FILED
NOV 12, 1993
Roy O. Gaylord
COUNTY SURVEYOR