

Partition Plat # 9223

Instrument received on the 24 day of
NOVEMBER, 1992 at 10:16 A.M.

Hiroko Pierce Nelsen
Hood River County Director of Records
and Assessments

SURVEYOR'S CERTIFICATE

WILLIAM J. FROST
being first duly sworn, depose and say that I have
correctly surveyed and marked with proper
monuments the lands represented on this Partition
Plat, the boundaries being described in
Instruments:
810802, dated May 11, 1981
Hood River County Deed Records to
HIROKO NELSEN

Adjoiner
833496, dated Dec. 28, 1989
Hood River County Deed Records to
Bill & Keiko Hirata

ACKNOWLEDGEMENTS

We the owner(s) of the land shown herein, hereby
declare that this division of land has been made with
our free consent and in accordance with our desires.

Hiroko Nelsen 10-21-92
OWNER DATE

STATE OF OREGON
COUNTY OF HOOD RIVER s.s.
Subscribed and sworn to before me on this
21st day of OCTOBER, 1992

by Carol A. Cochran

OFFICIAL SEAL
CAROL A. COCHRAN
NOTARY PUBLIC - OREGON
COMMISSION NO. 007840
MY COMMISSION EXPIRES AUG - 11 - 1995
Notary Public for the State of Oregon
My commission expires Aug 11, 1995

APPROVALS

I hereby certify that all taxes and assessments due
hereon have been fully paid as required by law.

Hood River County Director of Budget and
Finance

I hereby certify this partition was ex-
amined and approved as of this 21 day
of Oct., 1992
Richard G. Arnold
Hood River County Surveyor

I hereby certify this partition was ex-
amined and approved as of this 24th day
of November, 1992
Planning File Number 92-310 (minor)
Shirley Wilby for
Hood River COUNTY Planning Director

PARTITION PLAT

for tentative Minor Partition
No 92-310, being tax Lot 700, Assessor
Map 15. 10E 6AC, Hood River County, Oregon

Prepared for
Hiroko Pierce Nelsen

NARRATIVE:

The purpose of this Plat is to file for
the record the Partitioning of Tax Lot 700,
Assessor Map 15 10E 6AC, being a portion of
the S.W. 1/4 of the S.W. 1/4 of the N.E. 1/4 of Section
6, township 1 South, Range 10 East,
Willamette Meridian, Hood River
County, Oregon.

Also to file for the record the location and
character of all monuments found or
established, as noted hereon, which set forth
the boundary limits of the parcels shown
hereon.

BASIS OF BEARINGS:

The Westerly Line of said Section 6, as
shown on a Survey by Danny L. Gray, P.L.S.O.
No 1028, Filed Sept. 4, 1979 in file No 79070,
Records of Hood River County Surveyor,
being 500° 36' 17" W.

MONUMENT NOTES:

1. Found monuments, as noted, at all points
shown thus —●—, unless otherwise noted.
2. Set 1"X30" Iron Pipe, bearing brass Disk Stamped
W.J. Frost, P.L.S.O. 1971 at all points shown thus
—○—
3. Set P.K. nail at all points shown thus —○—

The DOMESTIC WATER is
available to Each Parcel, shown
hereon, from the Parkdale Water
Co., as per Letter dated 9-24-92.

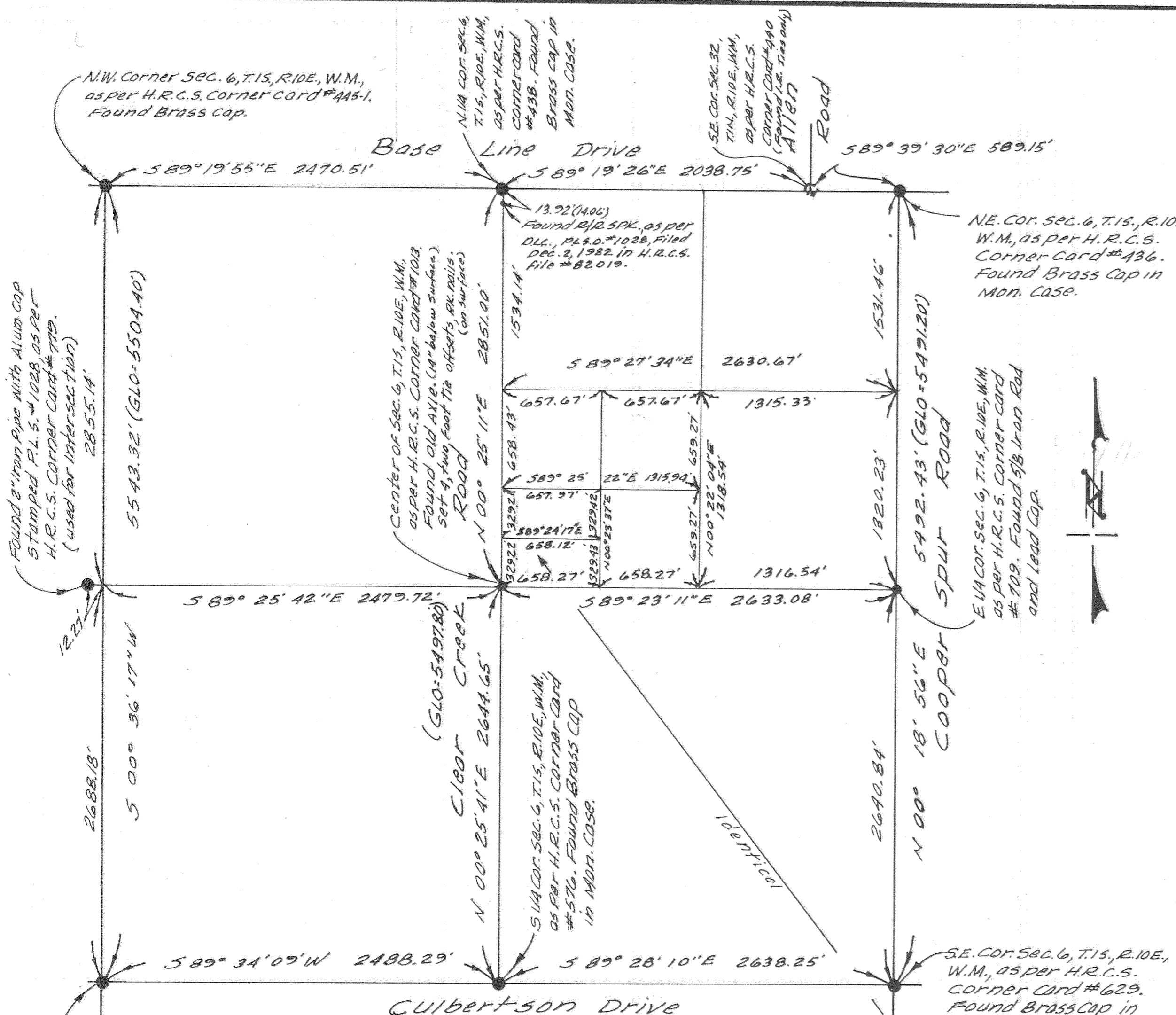
The Sanitary Sewer Disposal System
is available to Each Parcel, shown
hereon, from the Parkdale Sanitary
District, as per Letter dated 9-24-92.

REGISTERED
PROFESSIONAL
LAND SURVEYOR

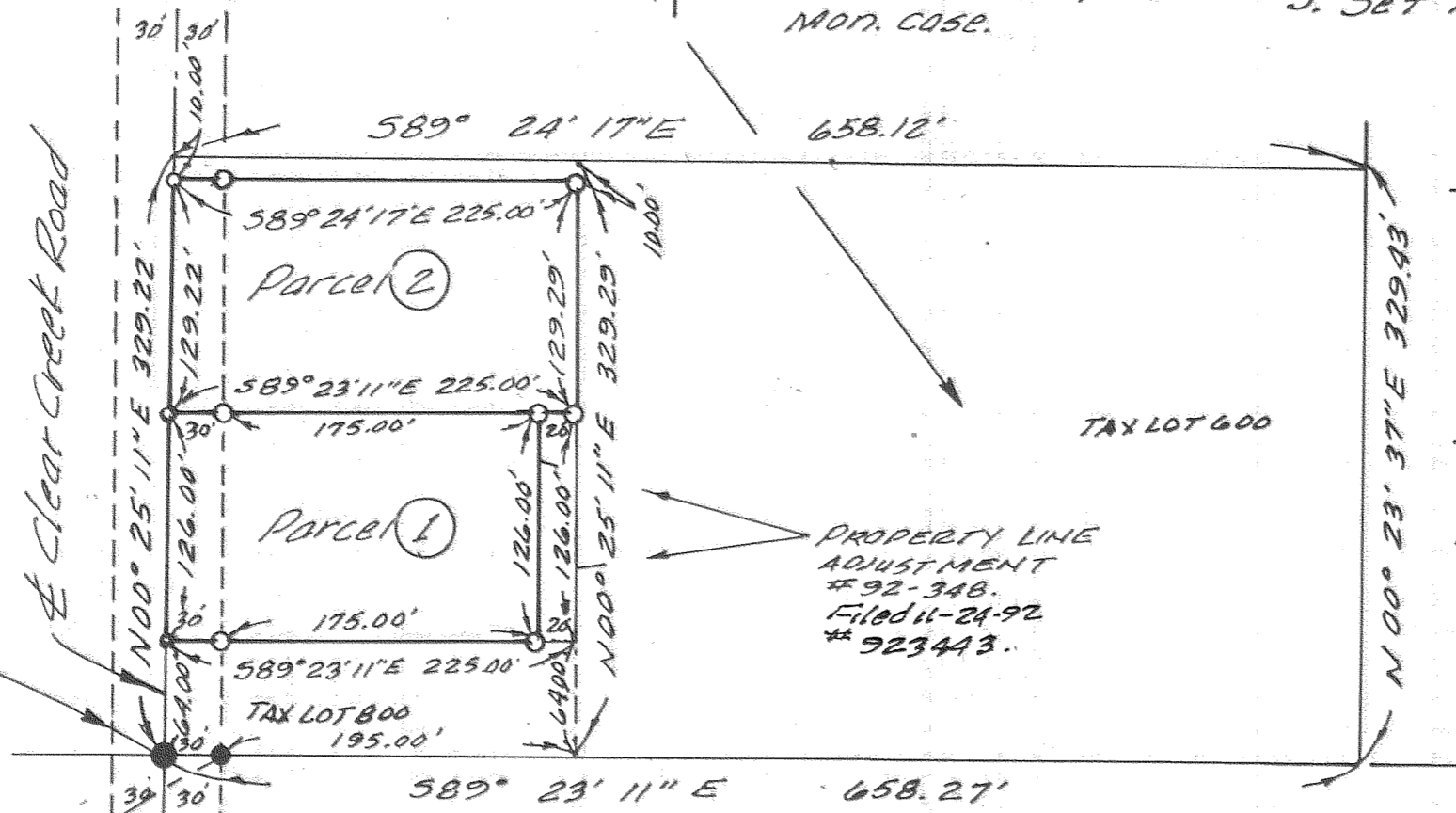
OREGON
JANUARY 19, 1982
WILLIAM J. FROST
1971

NOV 24 1992
Certified to be a true and
correct copy of the ORIGINAL
Dept. of Records & Assessment
by J. Just; Deputy

OCT. 16, 1992 JOB#0162



Boundary Control
Scale: 1"=600'



Detail
Partition of Tax Lot 700
Assessor Map 15. 10E 6AC
Scale: 1"=100'

FILED

DEC 14, 1992
Richard G. Arnold
COUNTY SURVEYOR

Center of Sec. 6, T.15, R.10E, W.M.,
as per H.R.C.S. Corner Card #1013.
Found old AXLE, 14" below
Surface. Set 4 two foot
ties offsets, P.K. nail on
Surface.

Frost's Land, Surveying & Cattle Company