

N.1/4, SEC. 10,
FD. H.R. COUNTY
BRASS CAP MON.

1/16 CORNER
SET P.K. NAIL

(BASIS OF BEARING) REF. C.S. #87035. (2659.53') CALL
S 87°53'37" W 2659.36'

PORTLAND DRIVE

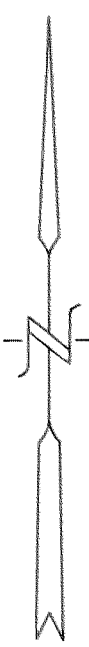
TAX LOT 200
02N-10-15

SECTION CORNER
FD. MON. BOX,
PART PAVED OVER
W/ 4 P.K. R.P.'s

N.W.1/4 OF N.E.1/4

N.E.1/4 OF N.E.1/4

DEE HIGHWAY



0' 50' 100' 200'
SCALE IN FEET

NOTES:

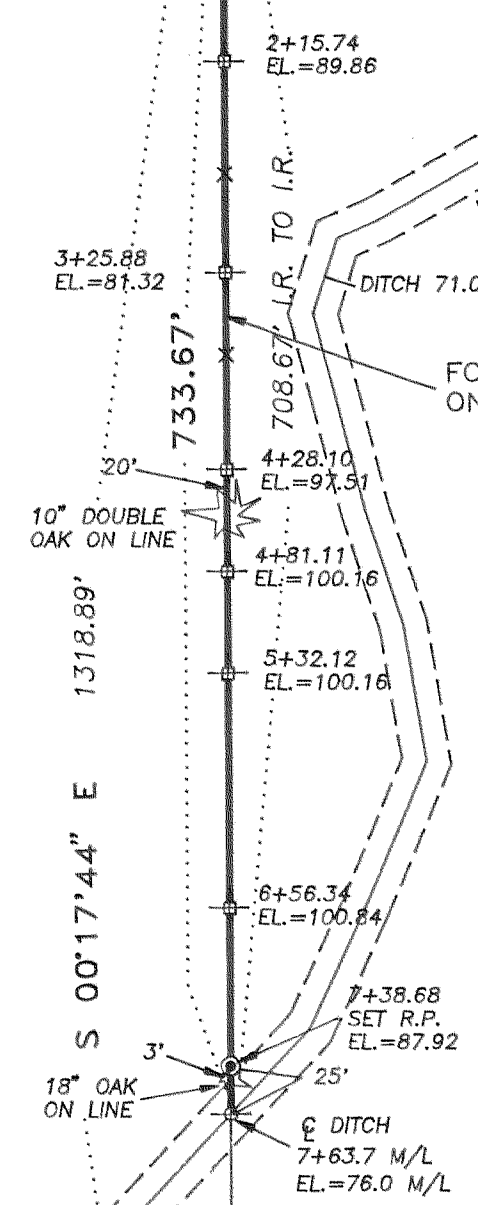
BEARINGS BASED ON D.L.C. SURVEY #87035
FILED FILED JULY 15, 1987

LEGEND:

- SET 5/8" DIA. x 30" IRON ROD WITH YELLOW PLASTIC CAP, #872.
- ⊙ FOUND MONUMENTS, AS NOTED.
- CALCULATED CORNERS, NOT SET.
- SET HUB & TACK.
- SET P.K. NAIL OR AS NOTED.
- x- EXISTING FENCE LINE.

REFERENCES:

HAGEE SURVEY BY D.L.C. SURVEYING
DANNY CRON, L.S. 1028, 7/1/87
#87035, FILED JULY 15, 1987.



NARRATIVE:

SURVEY PURPOSE TO ESTABLISH THE WEST LINE OF TAX LOT 200, ASSESSOR'S MAP 2N-10-15, BEING THE NORTH-SOUTH CENTERLINE OF THE NORTHEAST 1/4 OF SECTION 15, BETWEEN THE NORTH LINE AND THE IRRIGATION DITCH.

PRIOR SURVEY #87035 BY DAN CRON SUBDIVIDED THE NORTHEAST 1/4 OF SECTION 15, PROVIDING ALL BEARINGS AND DISTANCES ON THE SUBJECT NORTH-SOUTH CENTERLINE 1/16 LINE. THE NORTH 1/4 CORNER AND NORTHEAST CORNER OF SECTION 15 RECOVERED IN THE FIELD AS COUNTY BRASS CAP MONUMENTS WITH MEASURED DISTANCE CHECKING WITHIN 0.2 FT. OF RECORD.

SET P.K. NAIL ON THE 1/16 CORNER. TURNED OF PROTRACTED ANGLE AS PER PRIOR SUBDIVISION. RAN TRUE LINE, SETTING POINTS ON LINE AND WITH 5/8" x 30" IRON RODS WITH PLASTIC CAPS, MARKED "PLS 872" ON THE SOUTH RIGHT-OF-WAY OF PORTLAND DRIVE AND 3 FEET NORTH OF THE TREE LYING 25 FEET NORTH OF CENTERLINE OF DITCH, AS SHOWN.

N.E.1/16 CORNER
SECTION 15, T.2N. R.10E.
CALC. COR.

FILED
OCT 25, 1992
Richard G. Smith
COUNTY SURVEYOR

REGISTERED
PROFESSIONAL
LAND SURVEYOR
David L. Tuttle
OREGON
DAVID L. TUTTLE
JULY 12, 1988
5 7 2

Date	No.	Revisions	By	App.
SURVEY FOR ELLEN HOPKINS WEST LINE OF N.E.1/4, N.E.1/4, SECTION 15, BETWEEN DITCH & PORTLAND WAY TWP.2 N. RANGE 10 E. W.M. HOOD RIVER COUNTY, OREGON				
Design	TENNESON ENGINEERING CORP.			Scale 1" = 100'
Survey	D.L.T.			Date 9-17-92
Drawn	S.D.H.	Checked	Approved	Work Order No. 7904
				Sheet 1 of 1

92084