

2ND. ST. 0+00
 FD. P.K. NAIL FROM TERRA SURVEYING CONTROL, SET MON.



LEGEND:

⊙ SET 3 / 4" ALUM. CAP MONUMENT ON 1" φ x 30" ALUM. PIPE IN MONUMENT BOX. CENTER PUNCH, MARKED L.S., 872 - 1992.

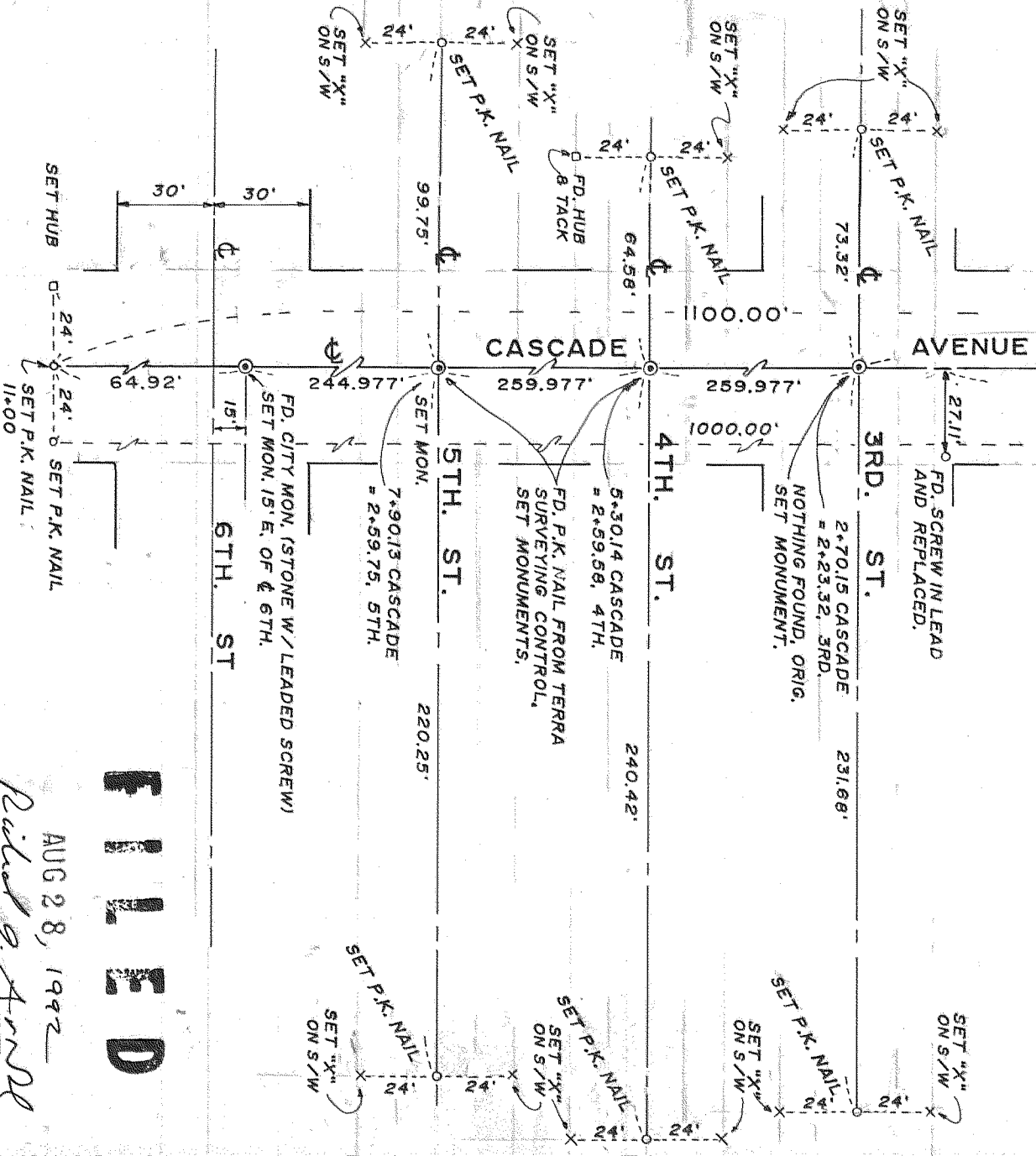
X SET "X" ON SIDEWALK BEFORE CONSTRUCTION.

□ SET HUB BEFORE CONSTRUCTION.

○ SET R.P. AS NOTED BEFORE CONSTRUCTION.

REFERENCE:
 LAYOUT MAP OF CASCADE AVENUE CONTROL BY TERRA SURVEYING.

NOTE:
 SEE SHEET 2 FOR NARRATIVE.



FILED

AUG 28, 1992
 Richard A. Arnold
 COUNTY SURVEYOR

REGISTERED PROFESSIONAL LAND SURVEYOR

David L. Tuttle
 DAVID L. TUTTLE
 JULY 12, 1968
 B 7 2

Date	Rev.	Scale	By	App.
Design		1" = 50'		
Survey	R.U.	Date		
Drawn	S.D.H.	7-6-92		
Checked		Sheet		
		2		
		W.C. O'Neil		
		7742		

REVISIONS

SURVEY FOR N.W. EARTHMOVERS, INC.
 CASCADE AVENUE
 HOOD RIVER, OREGON

N A R R A T I V E :

THE SURVEY PURPOSE WAS TO SURVEY EXISTING MONUMENTS AND TO ADD NEW CENTERLINE STREET MONUMENTS BETWEEN SECOND AND SIXTH STREETS ON CASCADE AVENUE IN THE CITY OF HOOD RIVER WHERE SUCH MONUMENTS WERE DISTURBED DURING THE RECENT RECONSTRUCTION OF SAID STREET. PRIOR TO CONSTRUCTION, THE CENTERLINE OF THE STREET WAS ESTABLISHED FROM P.K. NAIL SET ON SURFACE OVER OLD STONE MONUMENT AT CENTERLINE OF 2ND. & CASCADE STREETS AND FOUND P.K. NAILS SET BY TERRA SURVEYING IN THEIR SURVEY OF THE STREET ALIGNMENT FOR THE ORIGINAL ENGINEERING DESIGNS AT CENTER INTERSECTION OF 3RD., 4TH. & 5TH. STREETS. ALONG SUCH CENTERLINE, ALL FOUND MONUMENTS WERE TIED BY DISTANCE AND, WHERE NOT ON CENTERLINE, BY OFFSET. FOUND MONUMENTS CONSISTING OF THE FOLLOWING.

- CENTERLINE OF 2ND. STREET. PK NAIL OVER ORIGINAL STONE MONUMENT WHICH WAS UNCOVERED DURING CONSTRUCTION. THIS POINT WAS USED AS THE BEGINNING OF THE SURVEY WITH ALL DISTANCES THEN TAKEN TO THE WEST AND LEFT OR RIGHT.
- 140.10 FEET WEST, 27.59 FEET RIGHT, SCREW IN LEAD.
- 243.11 FEET WEST, 27.11 FEET LEFT, FOUND SCREW IN LEAD.
- 270.15 FT. WEST, PLAN MAP STATION AT CENTERLINE OF 3RD. STREET. NOTHING FOUND.
- 530.12 FEET WEST, PK NAIL AT CENTERLINE OF 4TH. STREET.
- 790.07 FEET WEST, PK NAIL AT CENTERLINE OF 5TH. STREET.
- 1,035.08 FEET WEST, EXISTING CITY MONUMENT #9 AT 15 FEET EAST OF THE CENTERLINE OF 6TH. STREET.
- 1,1000 FT. WEST, PK NAIL SET BY TENNESON ENGINEERING CORP.

EXAMINATION OF THE MEASURED DISTANCES SHOWED BY ADJUSTMENT OF 4TH. STREET POINT 0.007 FEET WEST AND 5TH. STREET 0.033 FEET WEST, EQUAL DISTANCE PER BLOCK WERE OBTAINED BETWEEN 4TH. STREET AND 6TH. STREET. THIS ADJUSTMENT WAS PERFORMED.

PRIOR TO CONSTRUCTION, REFERENCES WERE SET ALONG THE CENTERLINE AT 40 FEET EAST OF THE POINT OF BEGINNING AND THEN AT CONVENIENT DISTANCES LEFT OR RIGHT ON CENTERLINE OF THIRD, FOURTH, AND FIFTH STREETS. ALL REFERENCES WERE IN THE FORM OF A CROSS ON THE SIDEWALK WHICH WERE SET EQUAL DISTANCE FROM THE APPARENT CENTERLINE OF THE STREET TO CHECK THE CENTERLINE MONUMENTS SET BY TERRA. IN ALL CASES, THEY WERE FOUND TO INTERSECT ACROSS THE ESTABLISHED P.K. NAILS ON THE CENTERLINE OF CASCADE STREET.

AFTER CONSTRUCTION, ALL REFERENCES WERE RECOVERED AS PREVIOUSLY SET AND NEW MONUMENTS PLACED ON THE RE-ESTABLISHED CENTERLINE AT THE POINT OF THE PRIOR P.K. NAIL AND/OR MONUMENT LOCATIONS AS SHOWN ON THE ATTACHED PLAT. THE MONUMENTS CONSIST OF 3 INCH ALUMINUM CAP. MONUMENTS WERE SET ON A 1 INCH ROUND BY 30 INCH ALUMINUM PIPE INSIDE OF THE ALUMINUM TOPPED MONUMENT BOX MARKED "CITY MONUMENT". MONUMENTS WERE CENTER PUNCHED FOR CENTERLINE POINT OF THE INTERSECTION AS ESTABLISHED FROM THE REFERENCE LINES BY DIRECT INTERSECTION AND STAMPED "L.S. 872" FOR OUR SURVEYOR IN CHARGE. DAVID L. TUTTLE, AND "1992" FOR THE YEAR.

F I L E D

AUG 28, 1992

Richard A. [Signature]
COUNTY SURVEYOR

REGISTERED
PROFESSIONAL
LAND SURVEYOR
David L. Tuttle
O R E G O N
DAVID L. TUTTLE
JULY 12, 1988
8 7 2

Date	No.	Scale	Revisions
Design		SHOWN	
Survey		Date	
		8/25/92	
Drawn		Sheet	
S.D.H.		2 of 2	
App.		Work Order No.	
		7742	

SURVEY FOR
N.W. EARTHMOVERS, INC.
CASCADE AVENUE
HOOD RIVER, OREGON