

SURVEY IN
 GOV LOT 13, SEC 10, T 1 N, R 10 E, WM
 COUNTY OF HOOD RIVER, STATE OF OREGON



0 400 800 1200
 SCALE IN FEET
 BASIS OF BEARING
 HOOD RIVER COUNTY SURVEY
 CS #79010

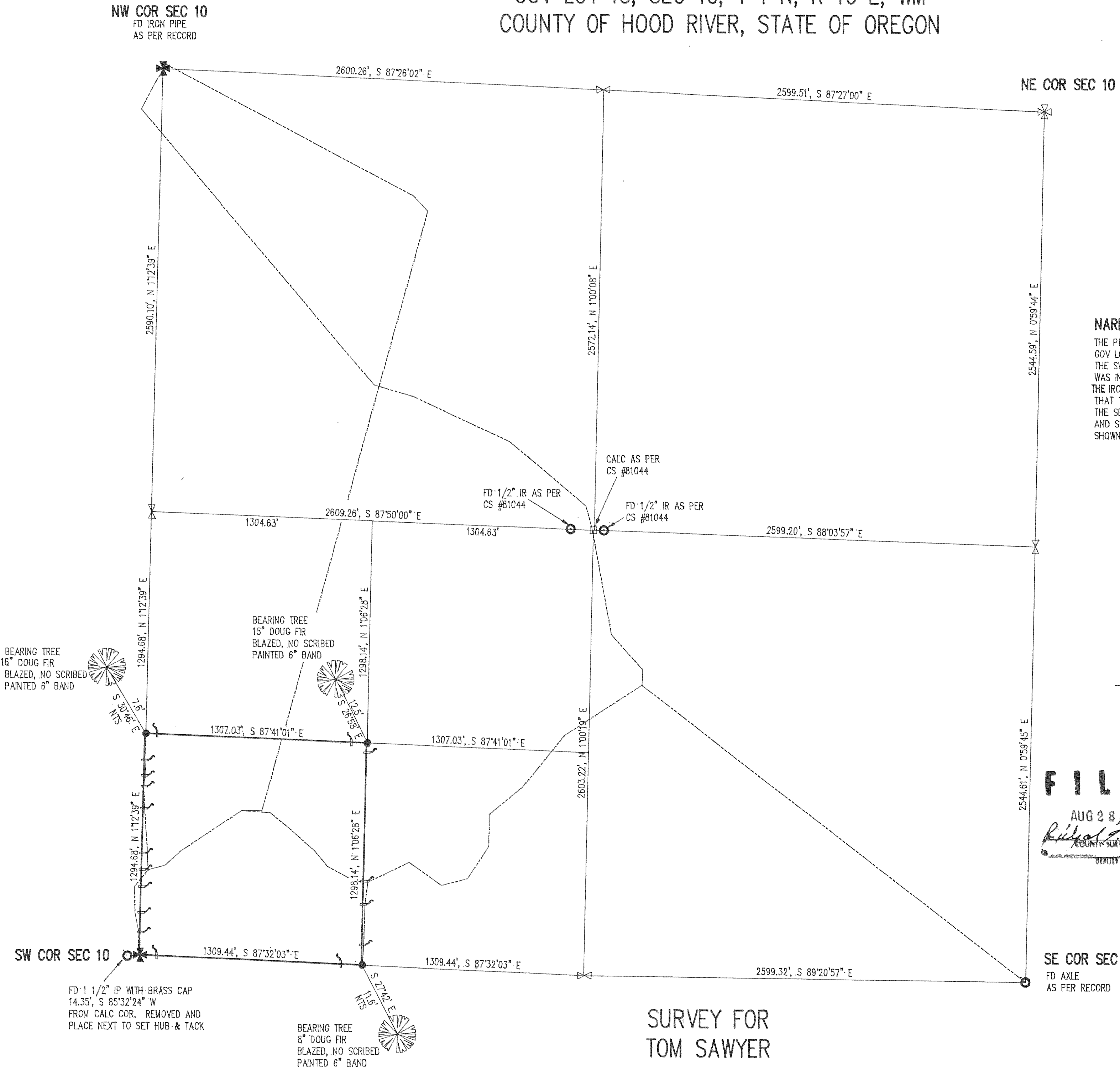
REFERENCE SURVEYS
 HOOD RIVER COUNTY SURVEY CS #79010
 DLC SURVEYING CS #81044
 DLC SURVEYING CS #79035

NARRATIVE OF SURVEY

THE PURPOSE OF THE SURVEY WAS TO ESTABLISH THE BOUNDARIES OF GOV LOT 13. DURING THE COURSE OF THE SURVEY IT WAS FOUND THAT THE SW CORNER OF THE SECTION WAS SET INCORRECTLY. THE COUNTY WAS INFORMED. I SET A HUB & TACK AT THE CORNER AND REMOVED THE IRON PIPE AND LAYED IT ALONG SIDE THE HUB & TACK. I DETERMINED THAT THE SW CORNER WAS INCORRECT BY RUNNING A TRAVERSE BETWEEN THE SE CORNER AND THE NORTHWEST CORNER. ALL MONUMENTS FOUND AND SET, ALONG WITH THE MEASURED BEARINGS AND DISTANCE ARE SHOWN HEREIN.

LEGEND

- = SET 5/8" IR WITH PLASTIC CAP MARKED OR #932 & WA #22098 EXCEPT AS NOTED
- = FOUND MONUMENT AS NOTED
- = CALCULATED CORNER AS NOTED
- ⊗ ⊠ = CALCULATED CORNER AS PER CS #79010
- = SET LATH ON LINE
- - - = TRAVERSE LINE



FILED

AUG 28, 1992
Richard Smith
 COUNTY SURVEYOR
 HOOD RIVER

REGISTERED
 PROFESSIONAL
 LAND SURVEYOR

OREGON
 JULY 17, 1970
 ANTHONY C. KLEIN
 932

Klein & Assoc.
 LAND SURVEYING
 1109 Country Club Road
 Hood River, Oregon 97031
 Tele: (503)386-3322

Date: Aug 1992
 Job# 92036

SURVEY FOR
 TOM SAWYER