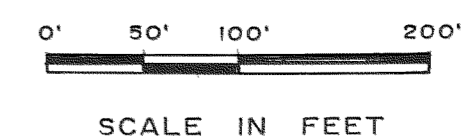
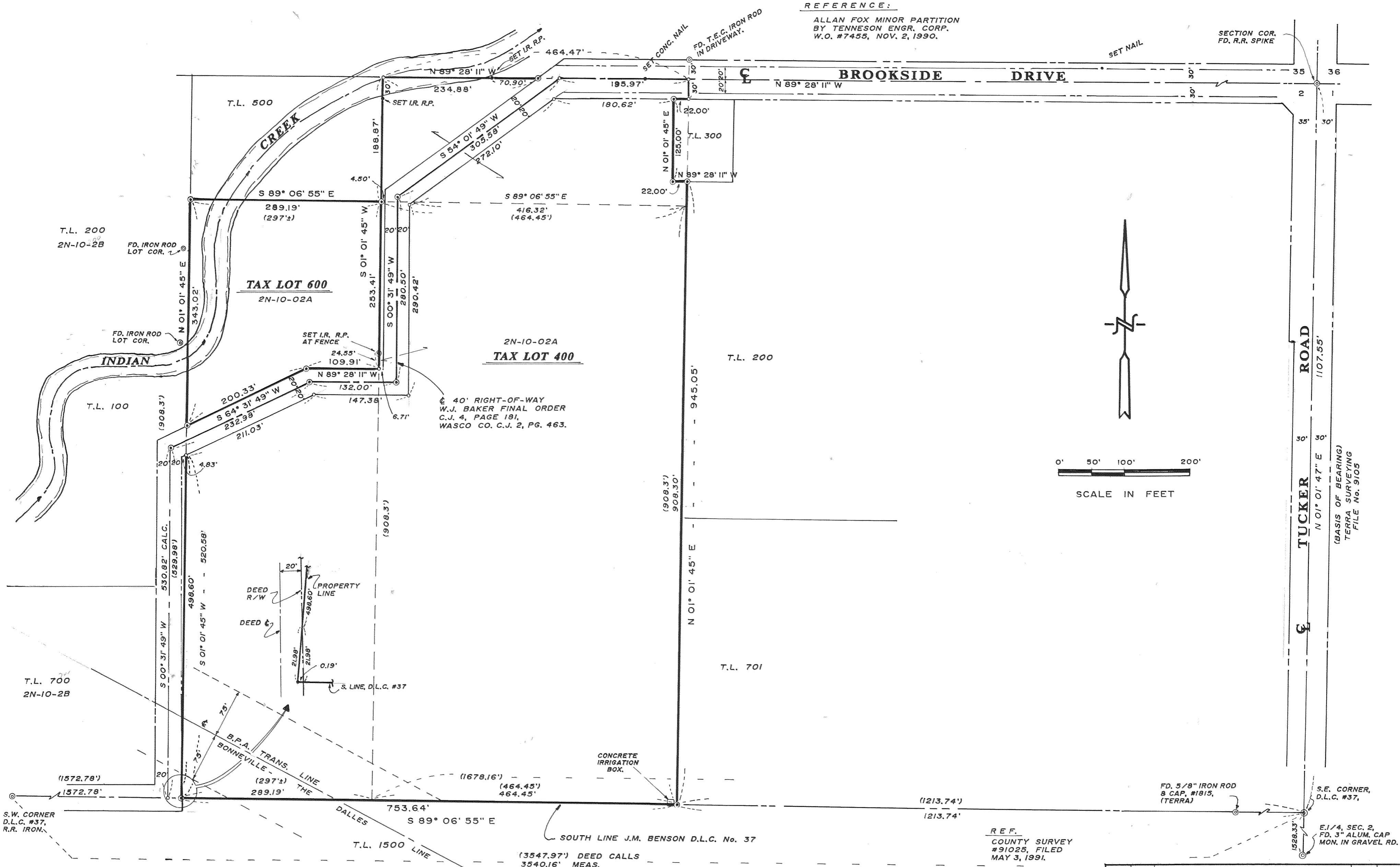


REFERENCE:

ALLAN FOX MINOR PARTITION
BY TENNESON ENGR. CORP.
W.O. #7455, NOV. 2, 1990.

SECTION COR.
FD. R.R. SPIKE



LEGEND:

- ⊙ SET 5/8" DIA. x 30" IRON ROD WITH YELLOW PLASTIC CAP, #872.
- ⊙ FOUND MONUMENTS, AS NOTED.
- SET MONUMENTS, AS NOTED.
- CALCULATED POSITION, NOT SET.
- () DEED DISTANCE.

NOTES:

NARRATIVE FIELD NOTES FILED SEPARATELY.
BEARINGS BASED ON EAST LINE SECTION 2, (i.e. TUCKER ROAD) TERRA SURVEYING MAP, FILE No. 9105.

FILED

MAR 13, 1992
Richard J. Smith
COUNTY CLERK

PROFESSIONAL
LAND SURVEYOR
David L. Tuttle
OREGON
DAVID L. TUTTLE
MAY 29, 1978

Date	No.	Revisions	By	App.
SURVEY FOR				
EVERETT POWERS				
TAX LOTS 400 & 600, (2N-10-02A)				
IN N.E. 1/4, SECTION 2, T.2 N., R. 10 E. W.M.				
HOOD RIVER COUNTY, OREGON				
Design	TENNESON ENGINEERING CORP.			Scale 1" = 100'
Survey	Consulting Engineers			Date 2-14-92
D.L.T.	409 Lincoln Street			
Drawn	Checked	Approved	Work Order No.	Sheet
S.D.H.			7707	1 of 1

92018