

NARRATIVE:

THE PURPOSE OF THIS SURVEY IS TO ESTABLISH AND MONUMENT THE EAST BOUNDARY OF THE STATE PARKS' PROPERTY. THIS BOUNDARY IS DESCRIBED AS BEING THE SECTION LINE BY THE PARKS DEED AND ADJACENT DEEDS IN THIS VICINITY; WE THEREFORE RETRACED THE SECTION LINE TO ESTABLISH THIS BOUNDARY.

THE SECTION CORNER WITH THREE BEARING TREES WAS ORIGINALLY SET IN 1859. IN 1906 J.L. HENDERSON RESET THE CORNER USING TWO FOUND BEARING TREES. HE RAN NORTH FROM THE CORNER AND BLAZED AN OAK TREE ON LINE. IN 1939 THE 3/4" PIPE (#10) WAS SET BY THE B.P.A. AND WAS USED AS THE SECTION CORNER UNTIL 1987. IN 1987 THE COUNTY SURVEYOR FOUND ONE ORIGINAL BEARING TREE AND THE 1906 LINE TREE BY HENDERSON. HE SET A BRASS CAP (#11) BY HOLDING THE RECORD DISTANCES TO THESE TWO TREES. WE ALSO FOUND THESE TREES AND VERIFIED THE DISTANCES TO THE BRASS CAP. THE NORTHING OF THE BRASS CAP IS VERIFIED TO BE WITHIN 3 FEET OF HENDERSON'S POSITION BY THE RELATIONSHIP SHOWN ON C.S. #78035 BETWEEN THE 3/4" PIPE (#10) AND THE 1/4 CORNER ONE-HALF MILE TO THE SOUTH. IT IS ALSO VERIFIED BY THE DISTANCE TO THE CORPS OF ENGINEERS' MONUMENT 1/2 MILE TO THE NORTH (SEE NEXT PARAGRAPH). THE EASTING OF THE BRASS CAP (#11) IS VERIFIED WITHIN 4 FEET OF HENDERSON'S POSITION BY THE RELATIONSHIP SHOWN ON C.S. #7587 BETWEEN THE 3/4" PIPE (#10) AND THE 1/16 CORNER 1/4 MILE TO THE EAST. WE MADE A THOROUGH SEARCH FOR OTHER EVIDENCE OF THE G.L.O. SURVEY AND HENDERSON'S SURVEY, AND FOUND NONE. WE CONCLUDED THAT THE PRESENT COUNTY SURVEYOR'S MONUMENT (#11) IS IN THE ORIGINAL G.L.O. POSITION AS CLOSELY AS CAN BE DETERMINED.

THE 1/4 CORNER WITH TWO BEARING TREES WAS ORIGINALLY SET IN 1859. IN 1906 J.L. HENDERSON COULD NOT FIND ANY EVIDENCE OF THE ORIGINAL CORNER SO HE SET THE CORNER BY SINGLE PROPORTION BETWEEN HIS RESET SECTION CORNERS. HIS MONUMENT ("OAK STAKE") WAS TIED BY THE RAILROAD IN 1913. THE CORPS OF ENGINEERS SET A BRASS CAP (#1) IN 1935 USING THE TIE FROM THE RAILROAD SURVEY. THEREFORE, THE BRASS CAP (#1) IS A PERPETUATION OF HENDERSON'S PROPORTIONED POSITION WHICH CAN BE VERIFIED BY THE DISTANCE SOUTH TO THE SECTION CORNER (#11). HENDERSON CALLED THIS DISTANCE 2648.58 (40.13 CH), BUT IN 1910 THE HOOD RIVER LAND COMPANY SUBDIVIDED THE SE 1/4 OF SECTION 32 AND CALLED THIS DISTANCE 2720 FEET. THE ACTUAL DISTANCE IS 2725.86 FEET. THE 5.86 FEET DISCREPANCY PROBABLY IS DUE TO THE LONG TIE OVER STEEP TERRAIN BY THE RAILROAD AND THE LONG RESET DISTANCE BY THE CORPS OF ENGINEERS. THE BRASS CAP (#1) IS ABOUT 70 FEET NORTH AND 30 FEET EAST OF THE TRUE 1/4 CORNER WHICH MIGHT EXPLAIN WHY HENDERSON DID NOT FIND THE ORIGINAL BEARING TREES. WE COULD NOT DETERMINE THE ORIGIN OF THE 1" IRON PIPE (#2). IN 1990 THE COUNTY SURVEYOR FOUND ONE G.L.O. ORIGINAL BEARING TREE WITH VISIBLE SCRIBES AND SET AN ALUMINUM CAP (#3). WE FOUND THIS MONUMENT TO BE SLIGHTLY OUT OF POSITION FOR BOTH BEARING AND DISTANCE AND THEREFORE SET A MONUMENT (#4) AT THE G.L.O. RECORD BEARING AND DISTANCE FROM THE EXISTING ORIGINAL BEARING TREE.

THE 1/16 CORNER (#9) WAS SET AT THE MID-POINT BETWEEN THE SECTION CORNER AND THE 1/4 CORNER.

ORANGE CARSONITE POSTS WERE SET ON THE PARKS BOUNDARY LINES AS SHOWN (SEE LEGEND).

ALL FOUND AND SET MONUMENTS WERE EITHER TRAVERSED THROUGH OR DOUBLE TIED. EQUIPMENT USED WAS A TOPCON FIVE-SECOND GTS-3C ELECTRONIC TOTAL STATION OR A PENTAX PX 10-D TEN-SECOND MANUAL TOTAL STATION, AND A STEEL TAPE FOR SHORT DISTANCES.

DISTANCES TO BEARING TREES WERE MEASURED TO SIDE-CENTER OF THE ROOT CROWN.

MONUMENTS:

- 1 FOUND 3-1/2" BRASS DISC IN CON. 3 FT. SOUTH OF OLD FENCE MARKED AS SHOWN. N. 21°08' 44" E 73.70' FROM SET 1/4 COR; 26.59' EAST OF SECTION LINE.
- 2 FOUND 1" IRON PIPE N 10° 39' 25" W 40.22' FROM SET 1/4 COR. 7.44' WEST OF SECTION LINE.
- 3 FOUND 2" ALUMINUM CAP ON 2" IRON PIPE N 3° 52' 30" E 3.50' FROM SET 1/4 COR. 0.23 EAST OF SECTION LINE. MARKED AS SHOWN, SET IN 1990 BY CO. SURVEYOR
- 4 SET 5/8" X 30" IRON ROD WITH 2" ALUM. CAP AT GLO RECORD S 60° E 126.70' FROM BEARING TREE. 3' EAST OF FENCE MARKED AS SHOWN SET BEARING TREES(SCRIBED " 1/4 S 32 BT): 12" D. FIR BEARS S 27° W 56.2' 20" OAK BEARS S 2 1.2° W 32.4' FOUND BEARING TREES: 43" D. FIR W/BLAZE S 77° W 33.4' 41" D. FIR W/BLAZE BEARS N 50 1/2° W 30.6' 8" D. FIR W/SCRIBES BEARS N 16° E 35.5'
- 5 FOUND 5/8" IRON ROD AT END OF FENCE S 2°02' 15" W 380.68' FROM SET 1/4 COR. 13.56' WEST OF SECTION LINE. PROBABLY SET IN 1976 BY C.S. NO. 7642
- 6 FOUND 5/8" IRON ROD IN FENCE COR S 0° 46' 39" W 658.90' FROM SET 1/4 COR 8.98' WEST OF SECTION LINE. PROBABLY SET IN 1975 BY C.S. NO. 7587
- 7 FOUND 5/8" IRON ROD N 14° 34' 15" E 17.69' FROM SET 1/16 COR 4.45' EAST OF SECTION LINE PROBABLY SET IN 1979 BY C.S. NO. 79101 N 0° 01' 27" W 1318.00 FROM MON. NO. 10 (N 0° 23' 18"W 1319.12 BY C.S. NO. 79101)
- 8 FOUND 3/4" IRON PIPE N 5° 26' 11" E 12.78 FROM SET 1/16 COR 1.21' EAST OF SECTION LINE PROBABLY SET IN 1965 BY TENNESON ENG. N 0° 09' 56" W 1313.61' FROM MON. NO. 10 (N 0° 17' 05" W 1313.72' BY TENNESON)
- 9 SET 5/8" X 30" IRON ROD WITH 2" ALUM. CAP AT MID POINT BETWEEN 1/4 COR AND SECTION COR. MARKED AS SHOWN SET BEARING TREES: 9" D. FIR BEARS N 20-1/2° W 28.0' 9" D. FIR BEARS N 42-1/2° W 25.6' BOTH SCRIBED " 1/16 S 32 BT"
- 10 FOUND 3/4" IRON PIPE N 10° 06' 11" E 28.06' FROM SECTION COR. 4.92 EAST OF SECTION LINE AS PER 1965 SURVEY BY TENNESON, THIS MONUMENT WAS SET FROM ONE BEARING TREE BY B.P.A. (MAP #3711)
- 11 FOUND 3" BRASS CAP ON 2" IRON PIPE, 7' NORTH OF FENCE, MARKED AS SHOWN. G.L.O. BEARING TREE BEARS N 75° 00' E 151.80'(G.L.O. - N 68° E 151.80) A LINE TREE BLAZED BY J.L. HENDERSON IN 1906 BEARS N 1° 39' E 611.22. (NORTH 611.16) THE BRASS CAP WAS SET IN 1987 BY THE CO. SURVEYOR BY HOLDING THE RECORD DISTANCES FROM THESE TWO TREES. FOUND BEARING TREES: 18" D. FIR BEAR N 76° E 17.3' 6" OAK BEARS S 23° E 12.4' 8" OAK BEARS S 64° W 10.7' 7" OAK BEARS N 7° W 18.2' ALL BT'S WITH BLAZES AND YELLOW TAGS

OREGON STATE PARKS & RECREATION DEPARTMENT
 SURVEY OF PORTION OF
SENECA FOUTS MEMORIAL STATE PARK
 SE 1/4 SEC. 32, & SW 1/4 SEC 33, T. 3 N., R. 10 E., W.M.
 HOOD RIVER COUNTY
 SCALE: 1" = 50' NOV., 1991

FILED

DEC 19 1991
Rital G. Inal
 COUNTY SURVEYOR
 DEPUTY

REGISTERED PROFESSIONAL LAND SURVEYOR

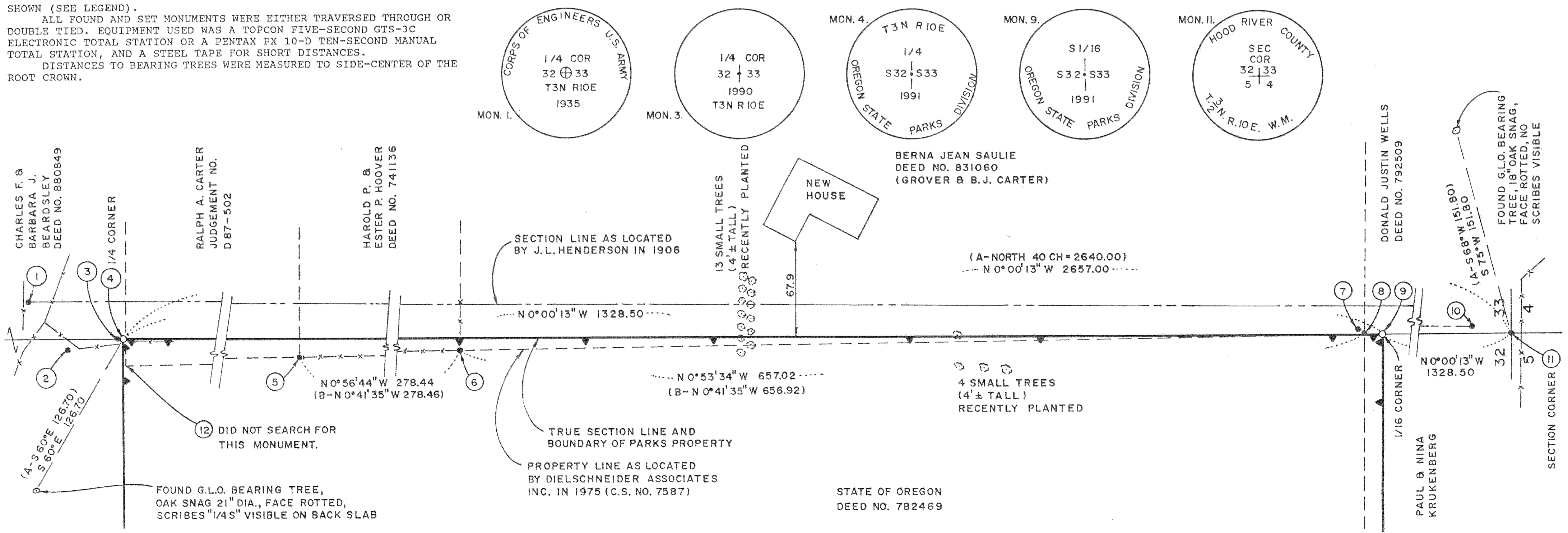
QSR
 OREGON JULY 26, 1988
 ANDREW T. BLACHLY
 2168

BEARINGS TRUE, BASED ON SOLAR OBSERVATION

OREGON STATE PARKS
 525 TRADE ST. S.E.
 SALEM, OR 97310
 PH. (503) 378-6821

LEGEND

- FOUND MONUMENT AS NOTED.
- SET 5/8" x 30" IRON ROD WITH ALUM. CAP, MARKED AS NOTED.
- ▼ SET ORANGE CARSONITE POST ON PROPERTY LINE.
- PROPERTY LINE AS LOCATED BY PREVIOUS SURVEYS.
- x- EXISTING FENCE
- (A-) RECORD DATA FROM GENERAL LAND OFFICE SURVEY IN 1859.
- (B-) RECORD DATA FROM CO. SURVEY NO. 7642.



STATE OF OREGON
 DEED NO. 782469