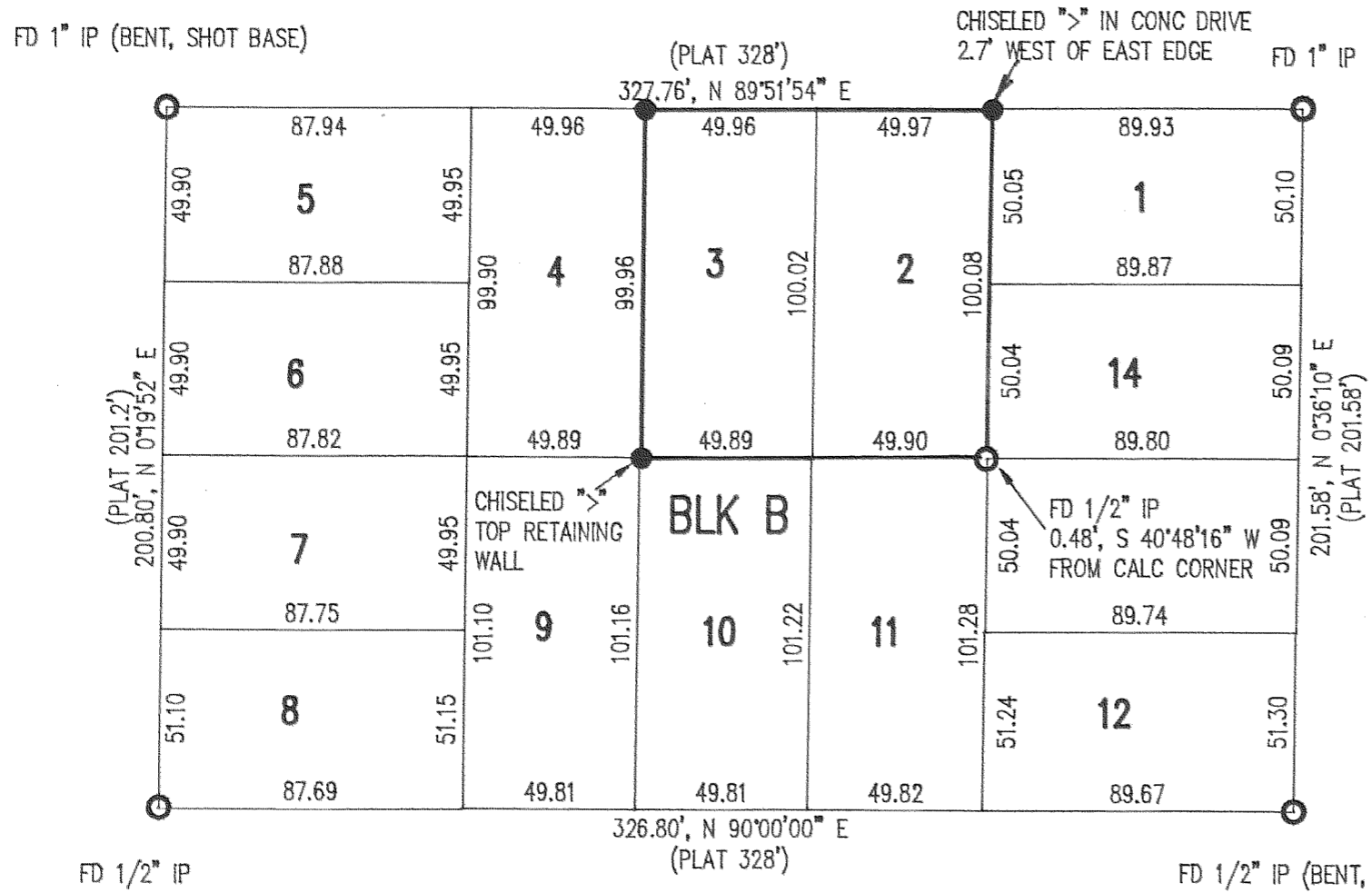
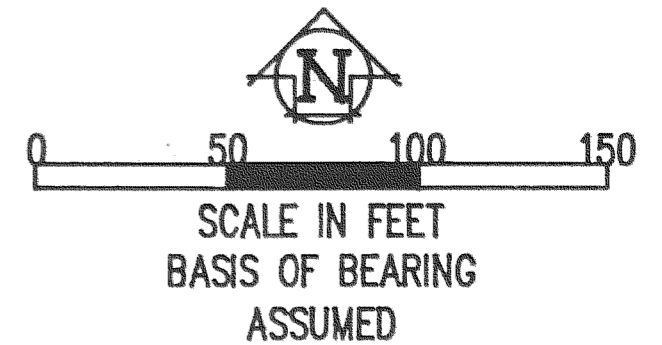


SURVEY IN BLK B, LOTS 2 & 3  
 CASS ADDITION TO CITY OF HOOD RIVER  
 NW 1/4, NW 1/4, SEC. 36, T 3 N, R 10 E, WN  
 COUNTY OF HOOD RIVER, STATE OF OREGON



- LEGEND**
- = SET 5/8" IR WITH PLASTIC CAP MARKED OR #932 & WA #22098 EXCEPT AS NOTED
  - = FOUND MONUMENT AS NOTED
  - = CALCULATED CORNER AS NOTED

**NARRATIVE OF SURVEY**  
 THE PURPOSE OF THE SURVEY OF THE SURVEY WAS TO ESTABLISH THE BOUNDARYS OF BLOCKS 2 & 3 OF CASS ADDITION. ALL FOUR BLOCK CORNERS FOUND AND HELD FOR THE BLOCK CORNERS AND THE LOTS WERE PORWERE PORTIONED BETWEEN THEM. ALL MONUMENTS FOUND AND ESTABLISHED ALONG WITH THE MEASURED BEARINGS AND DISTATANCES ARE SHOWN HEREIN.

SURVEY FOR  
 ASSEMBLY OF GOD CHURCH

REGISTERED  
 PROFESSIONAL  
 LAND SURVEYOR

*Anthony C. Klein*  
 OREGON  
 JULY 17, 1970  
 ANTHONY C. KLEIN  
 932

**Klein & Assoc.**

LAND SURVEYING  
 1109 Country Club Road  
 Hood River, Oregon 97031  
 Tele: (503)386-3322  
 DATE SURVEYED: DEC 1991  
 JOB NO.: 91077

**FILED**

DEC 19, 1991  
*Richard G. And*  
 COUNTY SURVEYOR  
 DEPUTY

# 91086