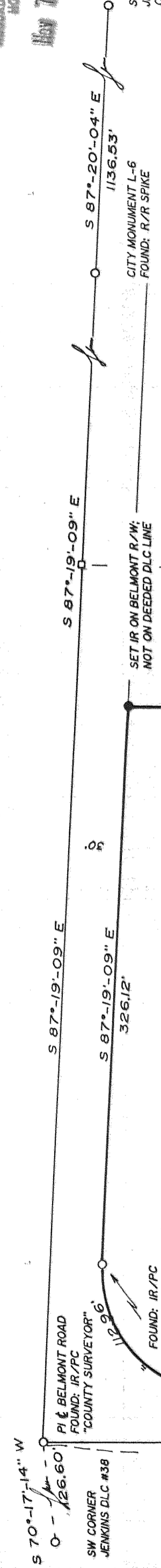


9026

FILED
RECORDS AND ASSESSMENT
HOOD RIVER CO.
Nov 7 3 09 PM '90

SE CORNER
JENKINS DLC #39
CITY MONUMENT L&R
HOOD RIVER
1962 A.M.C.O. COORDINATES:
N 743.914 46
E 1737.6002



R/W CURVE DATA
RADIUS = 70.00'
DELTA = 92° 26' 18"

207.55'
S 0°-50'-34" W

77.58'
S 89°-30'-22" E

575.30'

1204.80'

500.00'

500.00'

500.00'

500.00'

500.00'

500.00'

500.00'

500.00'

500.00'

500.00'

500.00'

500.00'

500.00'

500.00'

500.00'

500.00'

500.00'

500.00'

500.00'

500.00'

500.00'

500.00'

500.00'

500.00'

500.00'

500.00'

500.00'

500.00'

500.00'

500.00'

500.00'

500.00'

500.00'

500.00'

500.00'

500.00'

SET IR ON BELMONT R/W;
NOT ON DEEDED DLG LINE

326.12'
S 87°-19'-09" E

1136.53'
S 87°-20'-04" E

1136.53'
S 87°-19'-09" E

1136.53'
S 87°-20'-04" E

1136.53'
S 87°-19'-09" E

1136.53'
S 87°-20'-04" E

1136.53'
S 87°-19'-09" E

1136.53'
S 87°-20'-04" E

1136.53'
S 87°-19'-09" E

1136.53'
S 87°-20'-04" E

1136.53'
S 87°-19'-09" E

1136.53'
S 87°-20'-04" E

1136.53'
S 87°-19'-09" E

1136.53'
S 87°-20'-04" E

1136.53'
S 87°-19'-09" E

1136.53'
S 87°-20'-04" E

1136.53'
S 87°-19'-09" E

1136.53'
S 87°-20'-04" E

1136.53'
S 87°-19'-09" E

1136.53'
S 87°-20'-04" E

1136.53'
S 87°-19'-09" E

1136.53'
S 87°-20'-04" E

1136.53'
S 87°-19'-09" E

1136.53'
S 87°-20'-04" E

1136.53'
S 87°-19'-09" E

1136.53'
S 87°-20'-04" E

1136.53'
S 87°-19'-09" E

1136.53'
S 87°-20'-04" E

1136.53'
S 87°-19'-09" E

1136.53'
S 87°-20'-04" E

1136.53'
S 87°-19'-09" E

1136.53'
S 87°-20'-04" E

1136.53'
S 87°-19'-09" E

1136.53'
S 87°-20'-04" E

1136.53'
S 87°-19'-09" E

1136.53'
S 87°-20'-04" E

1136.53'
S 87°-19'-09" E

1136.53'
S 87°-20'-04" E

1136.53'
S 87°-19'-09" E

1136.53'
S 87°-20'-04" E

1136.53'
S 87°-19'-09" E

1136.53'
S 87°-20'-04" E

1136.53'
S 87°-19'-09" E

1136.53'
S 87°-20'-04" E

CITY MONUMENT L-6
FOUND: R/R SPIKE

1136.53'
S 87°-20'-04" E

1136.53'
S 87°-19'-09" E

1136.53'
S 87°-20'-04" E

1136.53'
S 87°-19'-09" E

1136.53'
S 87°-20'-04" E

1136.53'
S 87°-19'-09" E

1136.53'
S 87°-20'-04" E

1136.53'
S 87°-19'-09" E

1136.53'
S 87°-20'-04" E

1136.53'
S 87°-19'-09" E

1136.53'
S 87°-20'-04" E

1136.53'
S 87°-19'-09" E

1136.53'
S 87°-20'-04" E

1136.53'
S 87°-19'-09" E

1136.53'
S 87°-20'-04" E

1136.53'
S 87°-19'-09" E

1136.53'
S 87°-20'-04" E

1136.53'
S 87°-19'-09" E

1136.53'
S 87°-20'-04" E

1136.53'
S 87°-19'-09" E

1136.53'
S 87°-20'-04" E

1136.53'
S 87°-19'-09" E

1136.53'
S 87°-20'-04" E

1136.53'
S 87°-19'-09" E

1136.53'
S 87°-20'-04" E

1136.53'
S 87°-19'-09" E

1136.53'
S 87°-20'-04" E

1136.53'
S 87°-19'-09" E

1136.53'
S 87°-20'-04" E

1136.53'
S 87°-19'-09" E

1136.53'
S 87°-20'-04" E

1136.53'
S 87°-19'-09" E

1136.53'
S 87°-20'-04" E

1136.53'
S 87°-19'-09" E

1136.53'
S 87°-20'-04" E

1136.53'
S 87°-19'-09" E

1136.53'
S 87°-20'-04" E

1136.53'
S 87°-19'-09" E

1136.53'
S 87°-20'-04" E

1136.53'
S 87°-19'-09" E

1136.53'
S 87°-20'-04" E

1136.53'
S 87°-19'-09" E

1136.53'
S 87°-20'-04" E

1136.53'
S 87°-19'-09" E

ACKNOWLEDGEMENTS:

WE, THE OWNERS OF THE LAND SHOWN HEREIN,
HEREBY DECLARE THAT THIS DIVISION OF LAND
HAS BEEN MADE WITH OUR FREE CONSENT AND
IN ACCORDANCE WITH OUR DESIRES.

MLC Enter plus b7 *[Signature]* DATE 7/14/90

OWNER *[Signature]* DATE 7/14/90

OWNER *[Signature]* DATE 7-14-88

OWNER _____ DATE _____

OWNER _____ DATE _____

FILED FOR RECORD:

THIS 7th DAY OF November 1990,
RECORDED AS PARTITION PLAT No. 9026
HOOD RIVER COUNTY RECORDS.

[Signature]
HOOD RIVER COUNTY DIRECTOR OF RECORDS & ASSESSMENTS.

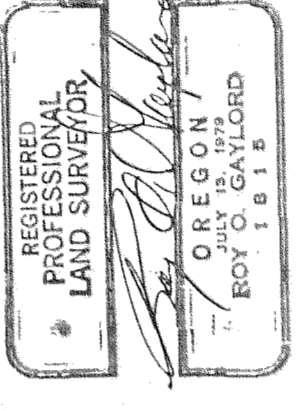
APPROVAL:

APPROVED THIS 1 DAY OF NOV., 1990.

[Signature]
HOOD RIVER COUNTY SURVEYOR

NARRATIVE:

NO MAJOR DISCREPANCIES WERE FOUND IN
HOLDING THE DEED CALLS AGAINST THE BELMONT
ROAD RIGHT-OF-WAY BY THE COUNTY SURVEYOR,
AND AGAINST JAMES ADDITION BY PLS 1028
FARMERS IRRIGATION DISTRICT WATER RIGHTS
TO BE ADDRESSED IN SEPARATE DOCUMENTS.



LOCATION OF SURVEY:

A PARCEL OF LAND LOCATED IN THE
NORTHEAST QUARTER OF THE SOUTHWEST
QUARTER OF SECTION 36, TOWNSHIP 3 NORTH,
RANGE 10 EAST, WILLAMETTE MERIDIAN,
IN HOOD RIVER COUNTY, OREGON.

(3N 10 35CA TAX LOTS 600 & 800)

BASIS OF BEARING:

TERRA SURVEYING PROJECT # 8317

REFERENCES:

TERRA SURVEYING PROJECTS #s 8317, 8836
PLS 1028 PLAT OF JAMES ADDITION
PLS 2038, COUNTY SURVEYOR, CS# 89069

LEGEND:

- SET 5/8" X 30" IRON ROD W/CAP
- SET 2 1/2" BRASS CAP ON GALVANIZED PIPE
- FOUND MONUMENT OF RECORD
- CALCULATED, NOT FOUND OR SET
- () DEED OR PLAT CALL

TERRA SURVEYING

DATE: JULY, 1990
SCALE: 1" = 60'
PROJECT: #8969

P.O. BOX 617
HOOD RIVER, OR. 97031
PHONE (503) 366-4531

FILED

NOV 16, 1990
[Signature]
COUNTY CLERK



853.76'
S 1°-29'-38" W

PARCEL 3
9.86± ACRES

100.00'
N 89°-34'-30" W

5000± Sq. Ft.
PARCEL 2

100.00'
S 89°-34'-30" E

5000± Sq. Ft.
PARCEL 1

100.00'
N 89°-34'-30" W

500.00'

500.00'

500.00'

500.00'

500.00'

500.00'

500.00'

500.00'

500.00'

500.00'

500.00'

500.00'

500.00'

500.00'

500.00'

500.00'

500.00'

500.00'

500.00'

FOUND: PLS 1028 IR/PC
FOR NE JAMES ADDITION

FOUND IR/PC
TERRA #8317

LOT 5

LOT 6

JAMES ADDITION

PI BELMONT ROAD
FOUND: IP/MONUMENT BOX

INITIAL POINT
JAMES ADDITION
FOUND: IP

MINOR PARTITION
for
CHARLES S. BOWE
HOOD RIVER, OREGON

#90096