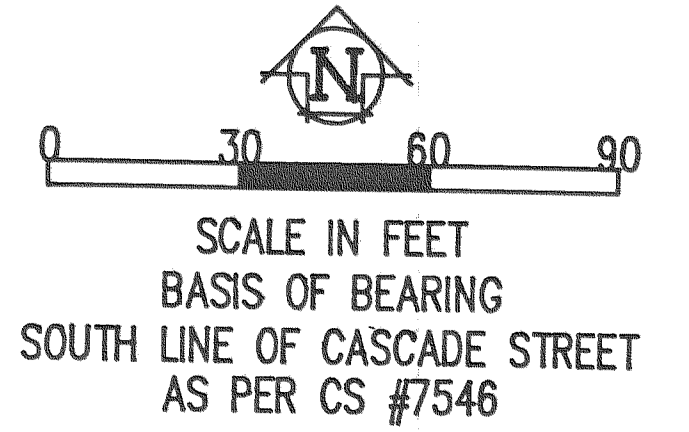
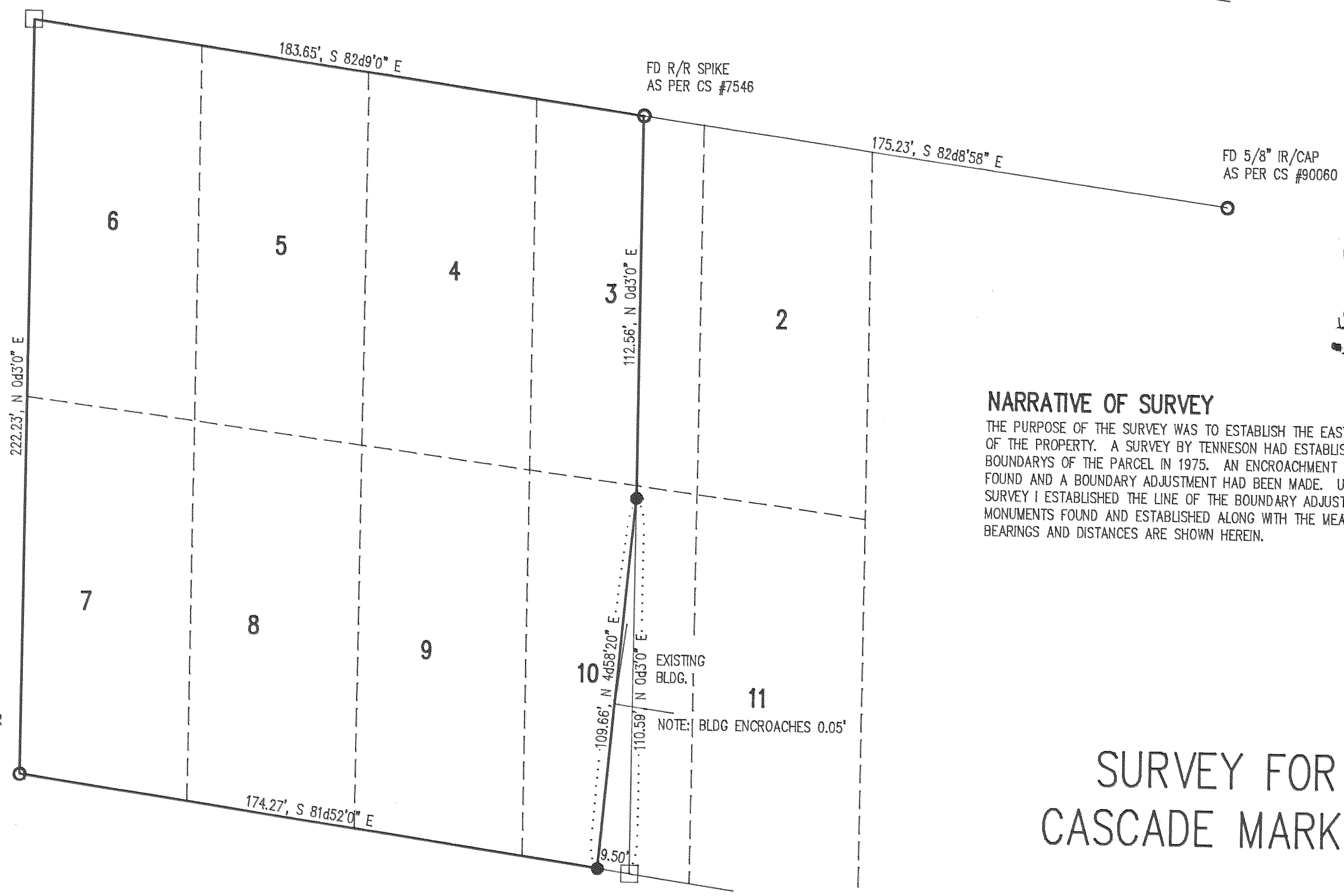


SURVEY IN
 BLK 1, OAK CREST ADDITION,
 SW 1/4, SE 1/4, SEC. 26, T 3 N, R 10 E, WM
 CITY OF HOOD RIVER, STATE OF OREGON



CASCADE STREET



REFERENCE SURVEYS

CS #7546 BY TENNESON ENG.
 CS #90060 BY TERRA SURVEYING

LEGEND

- = FD MONUMENT AS NOTED
- = SET 1/2" IR WITH PLASTIC CAP MARKED OR 932 & WA 22098
- = CALCULATED CORNER

FD 1/2" IP AS PER CS #7546
 S 61°02'32" E, 0.17' FROM CALC COR

FILED
 OCT 24, 1990
Ronald G. And
 COUNTY CLERK

NARRATIVE OF SURVEY

THE PURPOSE OF THE SURVEY WAS TO ESTABLISH THE EAST BOUNDARY OF THE PROPERTY. A SURVEY BY TENNESON HAD ESTABLISHED THE BOUNDARIES OF THE PARCEL IN 1975. AN ENCROACHMENT HAD BEEN FOUND AND A BOUNDARY ADJUSTMENT HAD BEEN MADE. USING THAT SURVEY I ESTABLISHED THE LINE OF THE BOUNDARY ADJUSTMENT. ALL MONUMENTS FOUND AND ESTABLISHED ALONG WITH THE MEASURED BEARINGS AND DISTANCES ARE SHOWN HEREIN.

SURVEY FOR
 CASCADE MARKET

REGISTERED
 PROFESSIONAL
 LAND SURVEYOR

Anthony C. Klein
 OREGON
 JULY 17, 1970
 ANTHONY C. KLEIN
 932

Klein & Assoc.
 LAND SURVEYING
 1109 Country Club Road
 Hood River, Oregon 97031
 Tele: (503)386-3322
 DATE SURVEYED: SEPTEMBER 1990
 JOB NO.: 90048

CS # 90087