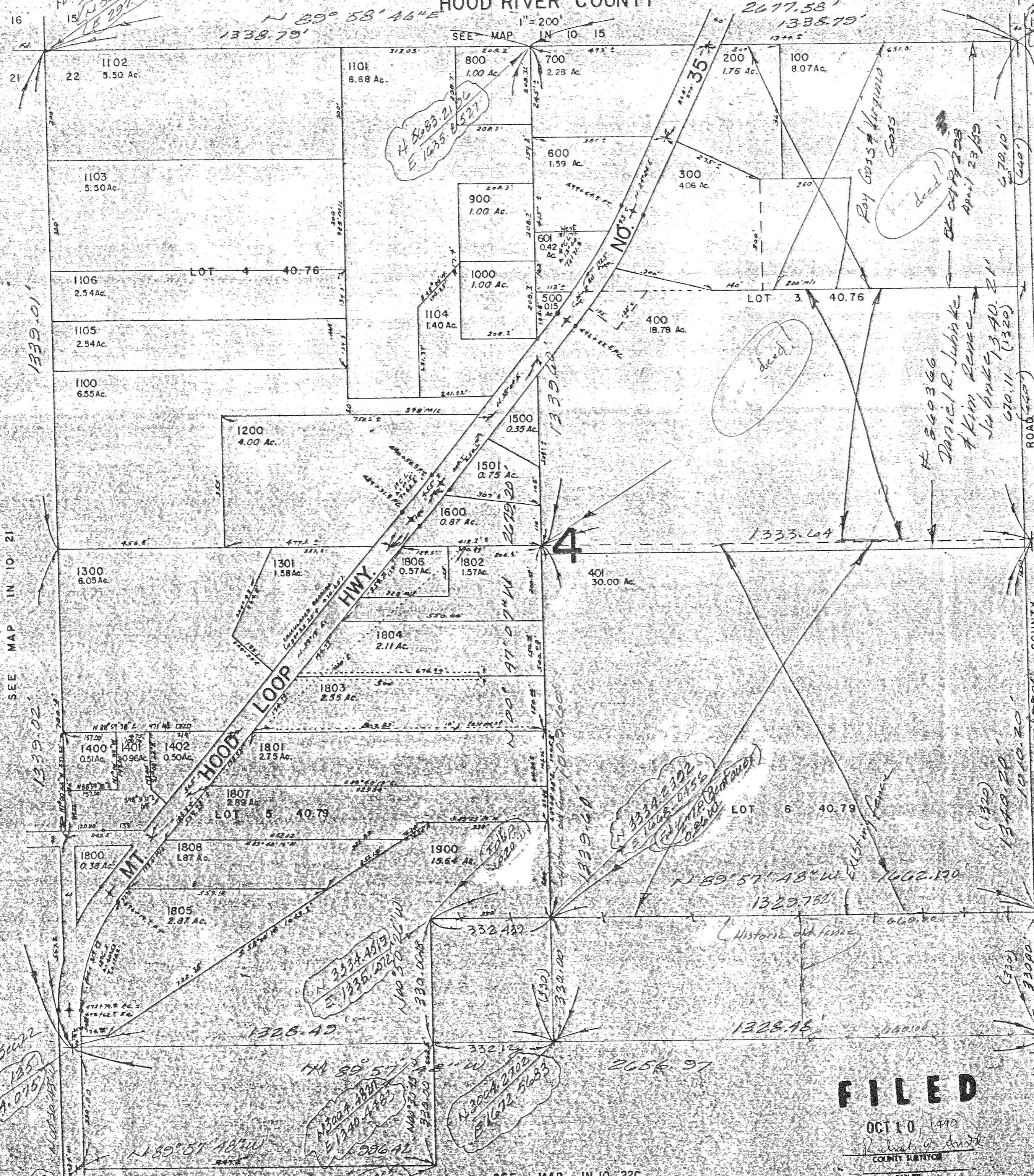


NW 1/4 SEC. 22 T. 1 N. R. 10 E. W. M.
HOOD RIVER COUNTY

IN 10 22B



Cancelled No's.
1700
499
101

CONTROL FROM HWY. MAP 88-2-11

REGISTERED MAP BY 1872-21, E. J. FILLIOTT

N 01° 20' 21" W 2678.03'
SEE MAP IN 10 21
1339.02'

N 26° 15' 12" W 341.075'
N 30° 05' 12" E 341.075'
N 30° 05' 12" E 341.075'

N 33° 45' 19" E 1335.072'
N 40° 30' 00" W 330.000'

N 30° 05' 12" W 341.075'
N 30° 05' 12" E 341.075'

N 33° 45' 19" E 1335.072'
N 40° 30' 00" W 330.000'

N 33° 45' 19" E 1335.072'
N 40° 30' 00" W 330.000'

N 30° 05' 12" W 341.075'
N 30° 05' 12" E 341.075'

FILED

OCT 10 1990
Richard A. Smith
COUNTY CLERK

SEE MAP IN 10 22C

90080-A

IN 10 22B

1-30-90

