

**NARRATIVE**

The Right of Way of existing Airport Drive was monumented by Hood River County Survey Department upon acceptance by the County Board of Commissioners. The survey by PLS 1028 for the Port of Hood River was held, along with the found axle, N 13 E, 0.5' from the calculated position, to monument Hood River County Deed Records Instrument Number 900916.

**LEGEND**

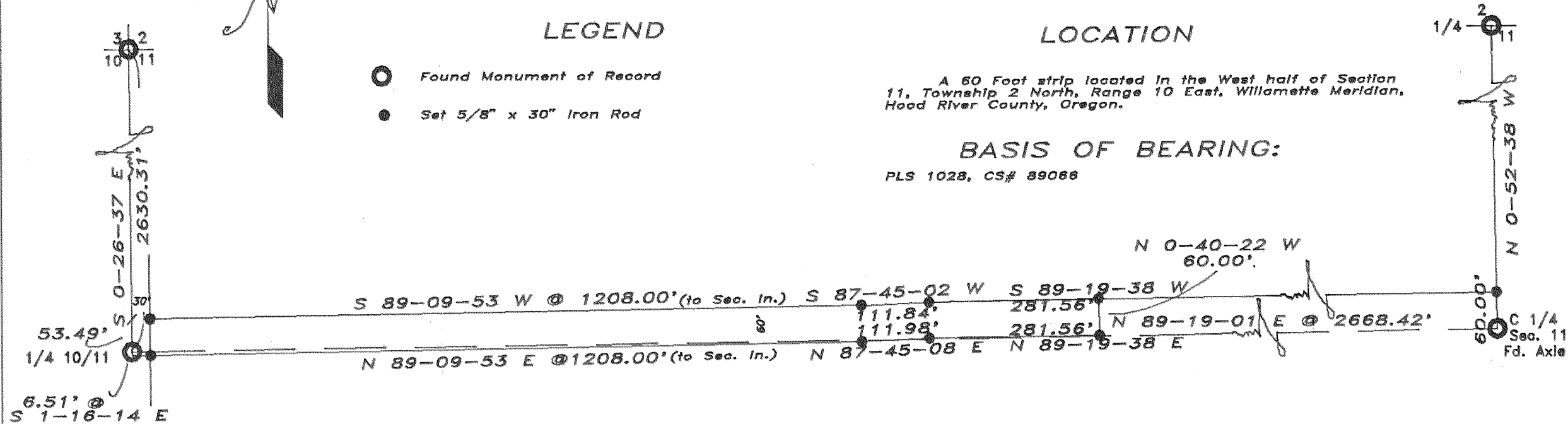
- Found Monument of Record
- Set 5/8" x 30" Iron Rod

**LOCATION**

A 60 Foot strip located in the West half of Section 11, Township 2 North, Range 10 East, Willamette Meridian, Hood River County, Oregon.

**BASIS OF BEARING:**

PLS 1028, CS# 89066



REGISTERED  
PROFESSIONAL  
LAND SURVEYOR

*Richard G. Arnold*

OREGON  
JULY 15, 1983  
RICHARD J. ARNOLD  
2038

SURVEY  
of  
AIRPORT DRIVE  
ACQUISITION  
to  
HOOD RIVER COUNTY

April 20, 1990  
Scale: 1" = 200'

**FILED**

APRIL 27, 1990  
*Richard G. Arnold*  
COUNTY SURVEYOR

by \_\_\_\_\_  
DEPUTY  
CS# 90027