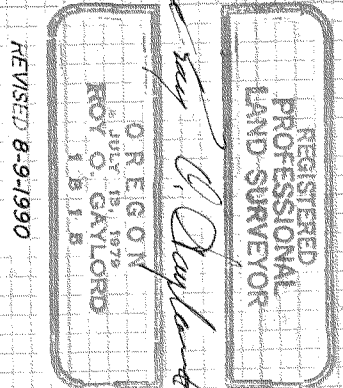
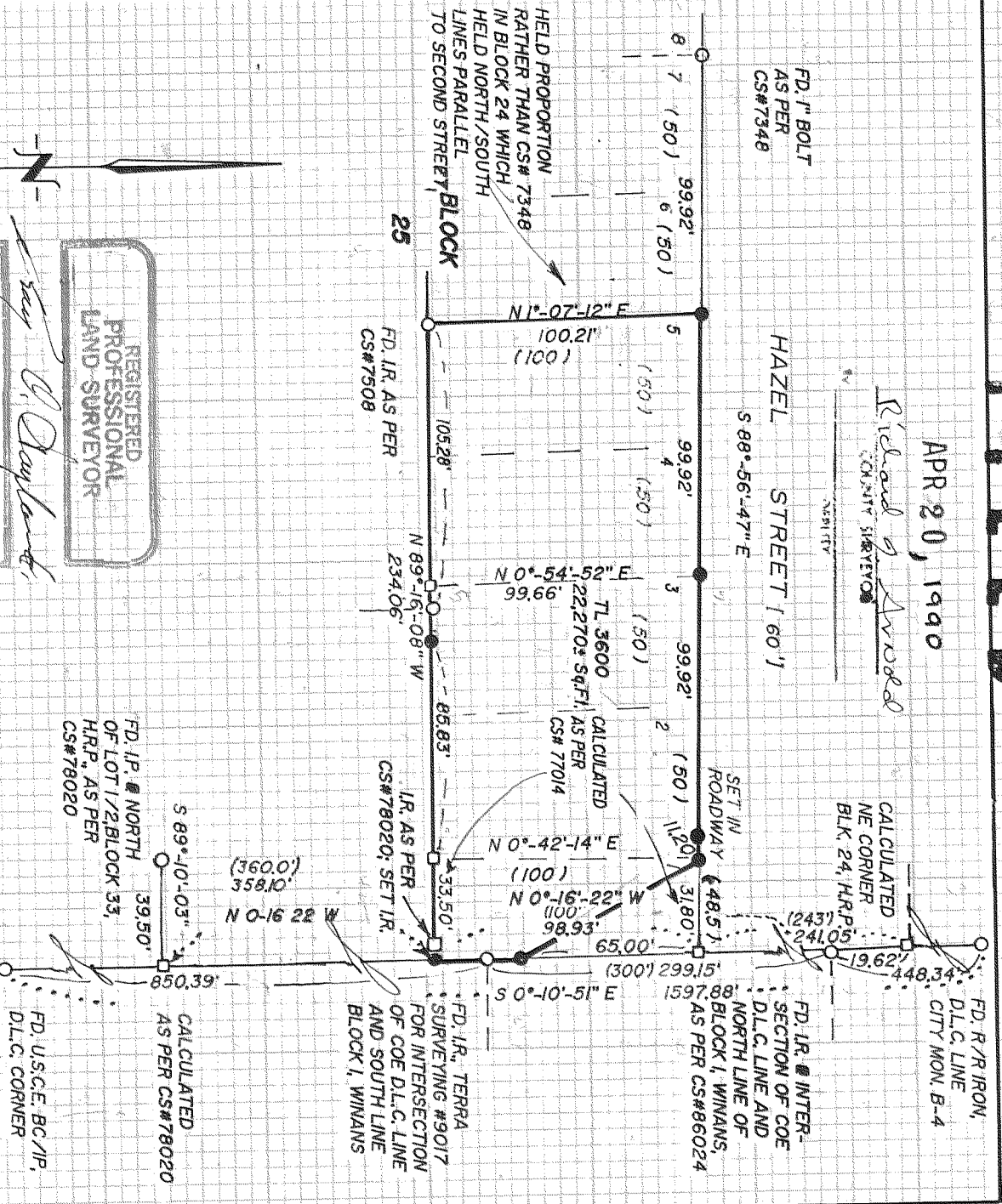


FILED

APR 20, 1990

Richard G. Arnold
REGISTERED PROFESSIONAL SURVEYOR



NARRATIVE:

HELD FOUND MONUMENTS TO ESTABLISH THE NORTHEAST CORNERS OF BLOCKS 24, 33, AND THE D.L.C. LINE. I PROPORTIONED BETWEEN AND ALONG THESE CORNERS TO ESTABLISH THE NORTHEAST CORNER OF BLOCK 25. HELD THE SHOWN LOT 1 AS TAPERING TO THE D.L.C. LINE. PLAT ERROR WAS FORCED INTO THE EAST LOT OF BLOCK 25. THIS PROCEDURE PROTECTS PRIOR SURVEYS RECORDED IN BLOCKS 24, 32, AND 33. HELD THE NORTHWEST CORNER OF LOT 1 AS CALLED IN BOOK 32, PAGE 151, AS A RECORD MONUMENT OVER THE 48.5' DISTANCE CALL.

BASIS OF BEARING:

ASSUMED DATUM

REFERENCES:

TERRA SURVEYING #s: 8626, 8632, 8829, 9017
 PLST028: CS#77014, 78019-20, 86024
 PLS 932 CS# 90003, 90010-11
 PLS 896 CS# 77044, 78048, 7508
 PLS 872 CS# 7348

LEGEND:

- SET 5/8" X 30" IRON ROD W/ CAP
- FOUND MONUMENT OF RECORD
- ◻ CALCULATED, NOT FOUND OR SET
- () DEED OR PLAT CALL

TERRA SURVEYING

DATE: APRIL 1990
 SCALE: 1" = 60'
 PROJECT: #9025

DAVE CALMETTES
 for
 SURVEY

HOOD RIVER, OREGON

P.O. BOX 617
 HOOD RIVER, OR. 97031
 PHONE (503) 386-4531

90025