

FILED

MAR 21, 1990

*Ronald A. Small*  
COUNTY SURVEYOR



SCALE IN FEET  
BASIS OF BEARING  
CITY COORDINATE SYSTEM

**SURVEY IN  
LOT 4 BLK 7  
WINAN'S ADDITION  
NE 1/4, SEC 36  
T3N, R10E, WM**

**NARRATIVE OF SURVEY**

Purpose of the survey was to establish the boundaries of Lot 4, Blk 7, Winan's Addition. 3 corners of the subdivision were found and the 4th calculated from a previous survey by DLC Surveying CS# 86024. All lots and blocks were proportioned accordingly. All monuments found and established along with measured bearings and distance's are shown herein.

REGISTERED  
PROFESSIONAL  
LAND SURVEYOR

*Anthony C. Klein*

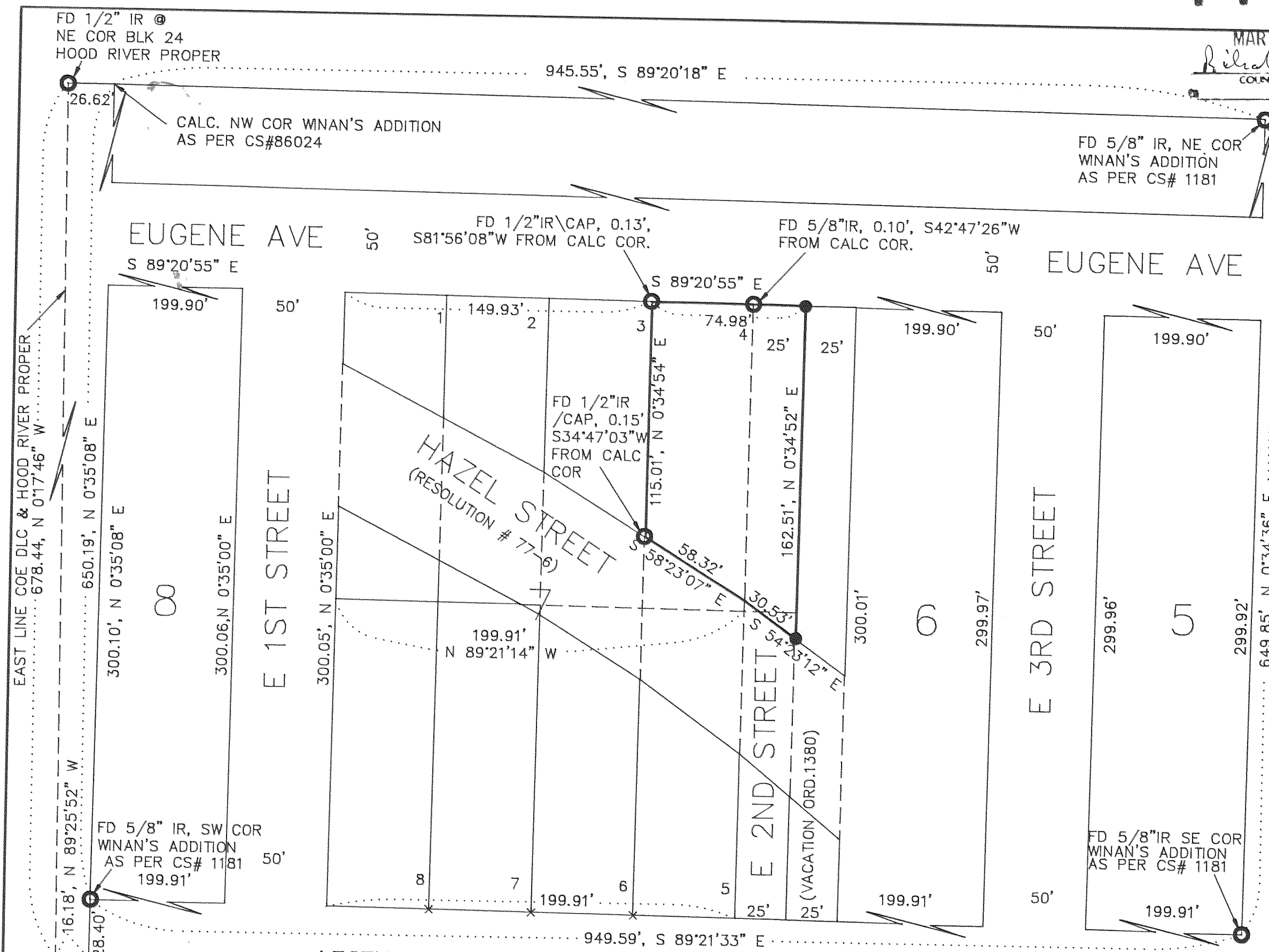
OREGON  
JULY 17, 1970  
ANTHONY C. KLEIN  
932

**SURVEY FOR  
CITY OF HOOD RIVER  
SURPLUS PROPERTY  
PARCEL #11**

**Klein & Assoc.**  
LAND SURVEYING  
1109 Country Club Road  
Hood River, Oregon 97031  
Tel: (503)386-3322

DATE SURVEYED: FEB 1990  
JOB NO.: 90001

CS# 90011



**LEGEND**  
● = SET 5/8" X 30" IR WITH PLASTIC CAP  
○ = FD MONUMENT AS NOTED

**REFERENCE SURVEYS**  
CS# 1181 BY TENNESON ENG, CS# 78008 BY DLC SURVEYING  
AND CS# 86024 BY DLC SURVEYING

FD 1/2" IR @  
NE COR BLK 24  
HOOD RIVER PROPER

945.55', S 89°20'18" E

CALC. NW COR WINAN'S ADDITION  
AS PER CS#86024

FD 5/8" IR, NE COR  
WINAN'S ADDITION  
AS PER CS# 1181

EUGENE AVE  
S 89°20'55" E

FD 1/2" IR \CAP, 0.13',  
S81°56'08"W FROM CALC COR.

FD 5/8" IR, 0.10', S42°47'26"W  
FROM CALC COR.

EUGENE AVE

EAST LINE COE DLC & HOOD RIVER PROPER  
678.44, N 0°17'46" W

650.19', N 0°35'08" E

300.10', N 0°35'08" E

300.06, N 0°35'00" E

E 1ST STREET

300.05', N 0°35'00" E

HAZEL STREET  
(RESOLUTION # 77-6)

FD 1/2" IR  
/CAP, 0.15'  
S34°47'03"W  
FROM CALC  
COR

115.01', N 0°34'54" E

162.51', N 0°34'52" E

E 3RD STREET

299.96'

299.92'

649.85', N 0°34'36" E

16.18', N 89°25'52" W

FD 5/8" IR, SW COR  
WINAN'S ADDITION  
AS PER CS# 1181

199.91'

CALC NE COR BLK 33  
HOOD RIVER PROPER  
AS PER CS# 78008

199.91'

199.91'

199.91'

199.91'

199.91'

949.59', S 89°21'33" E

FD 5/8" IR SE COR  
WINAN'S ADDITION  
AS PER CS# 1181

301036A12