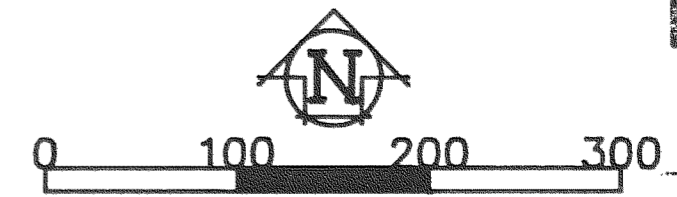


MAR 21 1990

Richard G. Klein
COUNTY SURVEYOR

SURVEY IN NW 1/4, NE 1/4, SEC 36, T3N, R10E, WM CITY OF HOOD RIVER, STATE OF OREGON



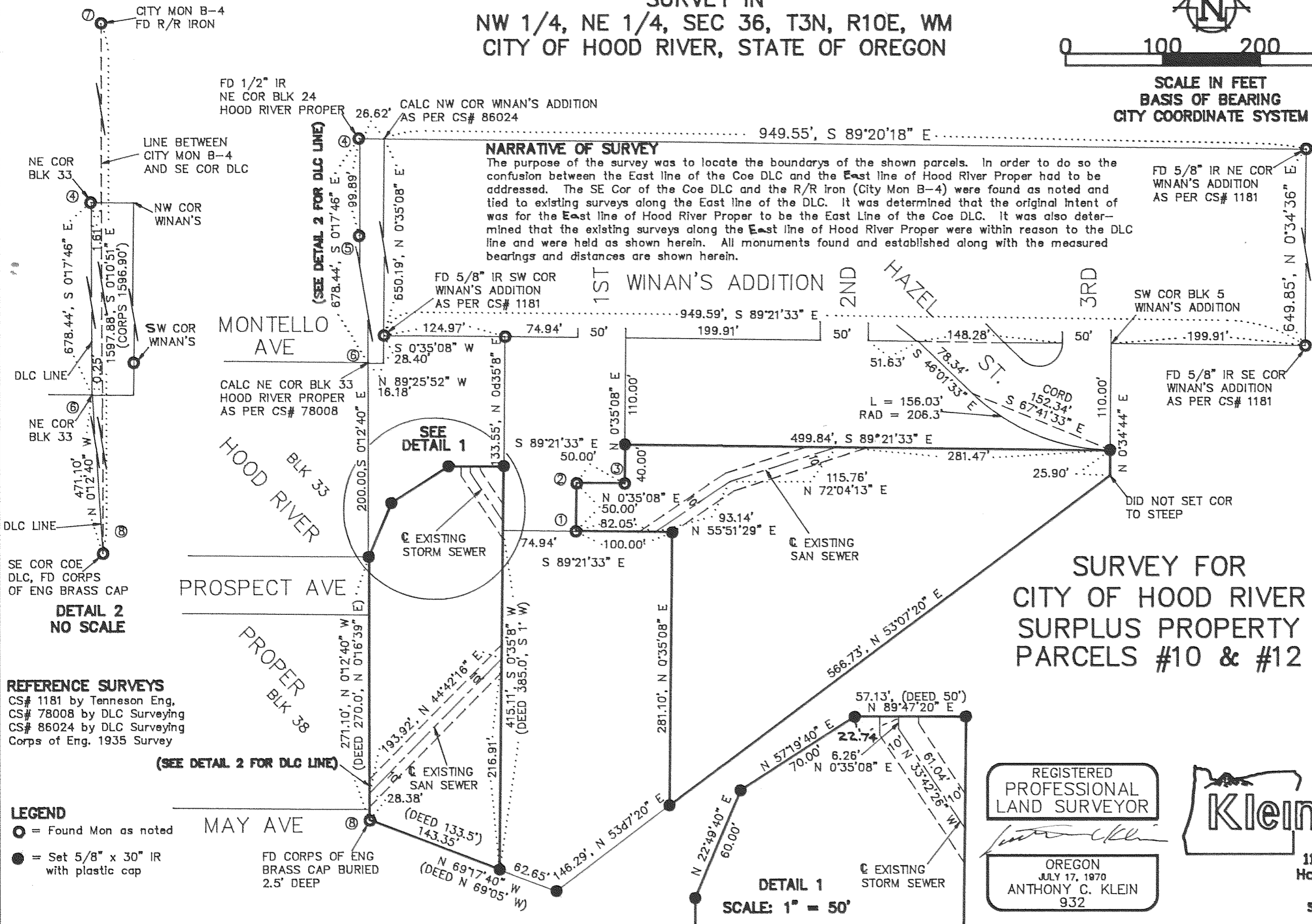
SCALE IN FEET
BASIS OF BEARING
CITY COORDINATE SYSTEM

NOTES

- ① FD 1/2" IR 0.17', N 9°54'05" E FROM CALC COR CS# 78008
- ② FD 1/2" IR 0.46', S 52°18'48" E FROM CALC COR CS# 78008
- ③ FD 1/2" IR 0.16', N 29°55'34" E FROM CALC COR CS# 78008
- ④ FD 1/2" IR/PLASTIC CAP NE COR BLK 24, HOOD RIVER PROPER. HELD FOR DLC LINE AND IS 1.61' WEST OF LINE BETWEEN CITY MON B-4 AND SE COR COE DLC. CS# 86024
- ⑤ FD 1/2" IR/PLASTIC CAP 0.11' EAST OF LINE BETWEEN 4 & 6, AND 1.50' WEST OF LINE BETWEEN CITY MON B-4 AND SE COR COE DLC. CS# 86024
- ⑥ CALC POSITION FOR NE COR BLK 24 HOOD RIVER PROPER PER CS# 78008. HELD FOR DLC LINE AND IS WEST 0.20' FROM LINE BETWEEN CITY MON B-4 AND SE COR COE DLC.
- ⑦ FD R/R IRON, CITY MON B-4, POINT ON DLC LINE.
- ⑧ FD CORPS OF ENGINEER'S BRASS CAP 2.5' DEEP. SET FROM OLD OAK STUMP DURING 1935 BONNEVILLE POOL SURVEY.

NARRATIVE OF SURVEY

The purpose of the survey was to locate the boundaries of the shown parcels. In order to do so the confusion between the East line of the Coe DLC and the East line of Hood River Proper had to be addressed. The SE Cor of the Coe DLC and the R/R iron (City Mon B-4) were found as noted and tied to existing surveys along the East line of the DLC. It was determined that the original intent was for the East line of Hood River Proper to be the East Line of the Coe DLC. It was also determined that the existing surveys along the East line of Hood River Proper were within reason to the DLC line and were held as shown herein. All monuments found and established along with the measured bearings and distances are shown herein.



REFERENCE SURVEYS
 CS# 1181 by Tenneson Eng.
 CS# 78008 by DLC Surveying
 CS# 86024 by DLC Surveying
 Corps of Eng. 1935 Survey

LEGEND
 ○ = Found Mon as noted
 ● = Set 5/8" x 30" IR with plastic cap

**DETAIL 2
NO SCALE**

**DETAIL 1
SCALE: 1" = 50'**

REGISTERED
PROFESSIONAL
LAND SURVEYOR

OREGON
JULY 17, 1970
ANTHONY C. KLEIN
932

Klein & Assoc.

LAND SURVEYING
 1109 Country Club Road
 Hood River, Oregon 97031
 Tele: (503)386-3322
 SURVEYED: FEBRUARY 1990
 JOB NO.: 90001

3/21/90 36 1125