

SURVEYOR'S CERTIFICATE

I, ORAN D. ABBOTT, BEING FIRST DULY SWORN, DEPOSE AND SAY THAT I HAVE CORRECTLY SURVEYED AND MARKED WITH PROPER MONUMENTS THE LANDS REPRESENTED ON THE ANNEXED MAP OF "GORGE VIEW CONDOMINIUMS" AND THAT FOR THE INITIAL POINT OF THE SURVEY I SET A 2" X 36" GALVANIZED IRON PIPE WITH A 2.5" BRASS CAP ATTACHED, SET IN CONCRETE, 6" BELOW THE SURFACE OF THE GROUND, SAID INITIAL POINT BEING NORTH 85° 50' 17" WEST 277.75 FEET FROM A FOUND STONE WITH TACK AT THE N.E. CORNER OF THE JENKINS D.L.C. # 30; THENCE NORTH 89° 08' 56" WEST 352.12 FEET TO A 5/8" IRON ROD; THENCE NORTH 89° 25' 43" WEST 44.90 FEET TO A 5/8" IRON ROD; THENCE NORTH 00° 12' 49" EAST 140.86 FEET TO A 5/8" IRON ROD; THENCE SOUTH 89° 57' 00" EAST 397.00 FEET TO A FOUND 1/2" IRON ROD; THENCE SOUTH 00° 12' 49" WEST 146.19 FEET TO THE POINT OF BEGINNING.

I, ORAN D. ABBOTT, A REGISTERED PROFESSIONAL LAND SURVEYOR CERTIFY THAT THIS PLAT FULLY AND ACCURATELY DEPICTS THE BOUNDARIES OF THE UNITS OF THE BUILDINGS AND THAT CONSTRUCTION OF THE UNITS AND BUILDINGS AS DEPICTED ON THE PLAT HAS BEEN COMPLETED.

THIS 19TH DAY OF December, 1989

REGISTERED PROFESSIONAL LAND SURVEYOR

Oran D. Abbott
OREGON
JULY 30, 1976
ORAN D. ABBOTT
1066

I, ORAN D. ABBOTT, HEREBY CERTIFY THIS TO BE A TRUE AND EXACT COPY OF THE PLAT OF "GORGE VIEW CONDOMINIUMS"

G. Robert Taylor
G. ROBERT TAYLOR
NOTARY PUBLIC - OREGON
Commission Expires 9-11-90

FILED

FEB 14, 1990

Richard J. Small
COUNTY SURVEYOR

GORGE VIEW CONDOMINIUMS

LOCATED IN THE SE. 1/4 SECTION 26, T.3N., R.10E., W.M.
CITY OF HOOD RIVER, HOOD RIVER COUNTY, OREGON

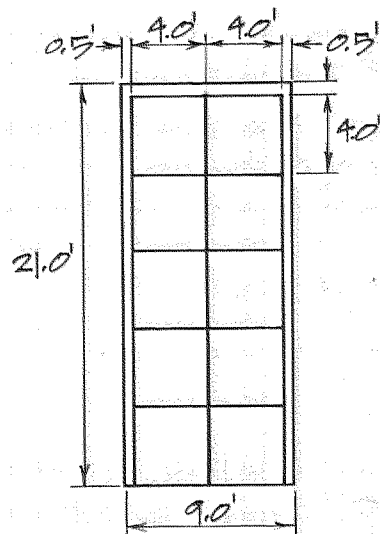
DECEMBER 1989

WILSEY & HAM PACIFIC
1099 S.W. COLUMBIA ST.
PORTLAND, OR, 97201
(503) 227-0455
PROJ. NO. 4-373-0101

SCALE: 1" = 20'

NARRATIVE:

THE PURPOSE OF THIS SURVEY WAS TO CREATE A CONDOMINIUM PLAT ON THE SHOWN PARCEL AT THE REQUEST OF JANE SCHMIDT COOK AND RODNEY COOK. AS A BASIS OF BEARINGS, I HELD THE RECORDED SURVEY OF THIS PARCEL, P.S. 88034 WHICH SHOWS THE NORTH BOUNDARY AS S 89° 57' 00" E. AT THE REQUEST OF THE OWNERS I ADJUSTED THE WEST LINE 17.00 FEET TO THE WEST AND SET THE APPROPRIATE MONUMENTATION. REFERENCES INCLUDED P.S. 88034, P.S. 77114, P.S. 77120, P.S. 7509, P.S. 7367 AND THE PLAT OF IDLEWILD ADDITION TO HOOD RIVER.



TYPICAL SAILBOARD LOCKER DETAIL (L.C.E.)

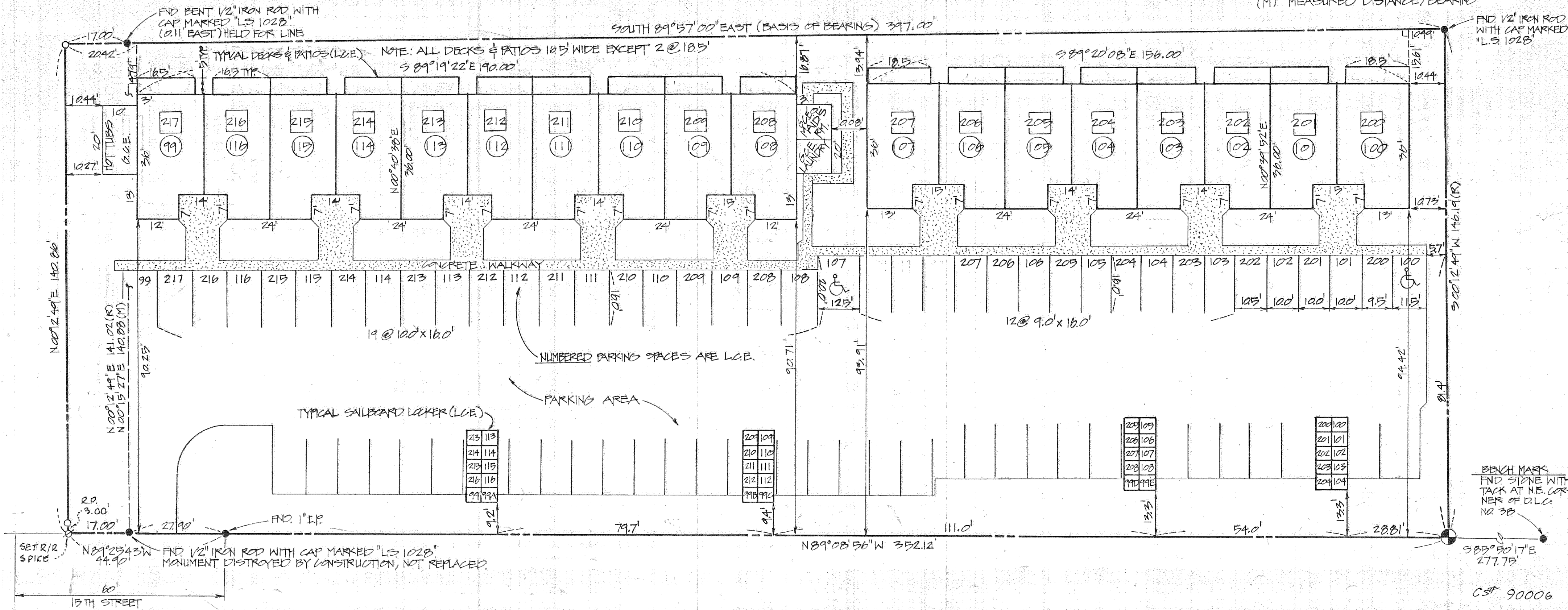
LAND: 54,534.56 SF
1.252 ACRES

INDEX & NOTES

- G.C.E. GENERAL COMMON ELEMENT
- L.C.E. LIMITED COMMON ELEMENT
- ⊕ INITIAL POINT OF PLAT
- FOUND MONUMENT AS NOTED
- SET 5/8" X 30" LANS IRON ROD WITH YELLOW CAP MARKED
- ⓪ INDICATES LOWER LEVEL UNIT NO.
- Ⓜ INDICATES UPPER LEVEL UNIT NO.
- (R) RECORD DISTANCE/BEARING
- (M) MEASURED DISTANCE/BEARING

SCALE: 1" = 20'

I-84 (COLUMBIA RIVER HIGHWAY)



APPROVALS:

THE ANNEXED MAP OF GORGE VIEW CONDOMINIUMS WAS EXAMINED AND APPROVED

THIS _____ DAY OF _____, 1989

HOOD RIVER CITY ENGINEER

THE ANNEXED MAP OF GORGE VIEW CONDOMINIUMS WAS EXAMINED AND APPROVED

THIS _____ DAY OF _____, 1989

HOOD RIVER CITY PLANNING COMMISSION

THE ANNEXED MAP OF GORGE VIEW CONDOMINIUMS WAS EXAMINED AND APPROVED

THIS 14 DAY OF Feb, 1990

Richard G. Arnold
HOOD RIVER COUNTY SURVEYOR

THE ANNEXED MAP OF GORGE VIEW CONDOMINIUMS WAS EXAMINED AND APPROVED

THIS _____ DAY OF _____, 1989

MAYOR CITY RECORDER

THE DIRECTOR OF RECORDS AND ASSESSMENTS AND THE DIRECTOR OF BUDGET AND FINANCE AND TAX COLLECTOR, RESPECTIVELY OF HOOD RIVER COUNTY, OREGON, HEREBY CERTIFY THAT WE HAVE EXAMINED THE ANNEXED PLAT OF GORGE VIEW CONDOMINIUMS IN THE CITY OF HOOD RIVER AND THE NAME ADOPTED FOR SAID PLAT IS A PROPER NAME AND NOT INCLUDED IN ANY OTHER SUBDIVISION IN HOOD RIVER COUNTY, AND FURTHER CERTIFY THAT ALL ASSESSMENTS DUE HEREON HAVE BEEN FULLY PAID AS REQUIRED BY LAW AND WE HEREBY APPROVE SAID PLAT.

HOOD RIVER COUNTY DIRECTOR OF BUDGET AND FINANCE AND TAX COLLECTOR

HOOD RIVER COUNTY DIRECTOR OF RECORDS AND ASSESSMENTS

I ORAN D. ABBOTT, A REGISTERED PROFESSIONAL LAND SURVEYOR CERTIFY THAT THIS PLAT FULLY AND ACCURATELY DEPICTS THE BOUNDARIES OF THE UNITS OF THE BUILDINGS AND THAT CONSTRUCTION OF THE UNITS AND BUILDINGS AS DEPICTED ON THE PLAT HAS BEEN COMPLETED.

THIS 19TH DAY OF December, 1989

REGISTERED PROFESSIONAL LAND SURVEYOR

ORAN D. ABBOTT
JULY 30 1976
1066

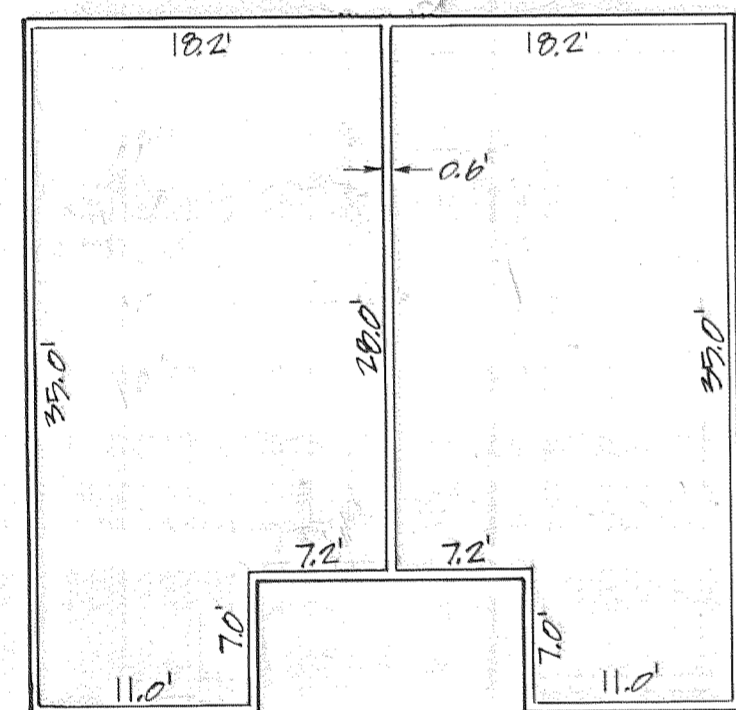
I, ORAN D. ABBOTT, HEREBY CERTIFY THIS TO BE A TRUE AND EXACT COPY OF THE PLAT OF "GORGE VIEW CONDOMINIUMS"

FILED

FEB 14 1990

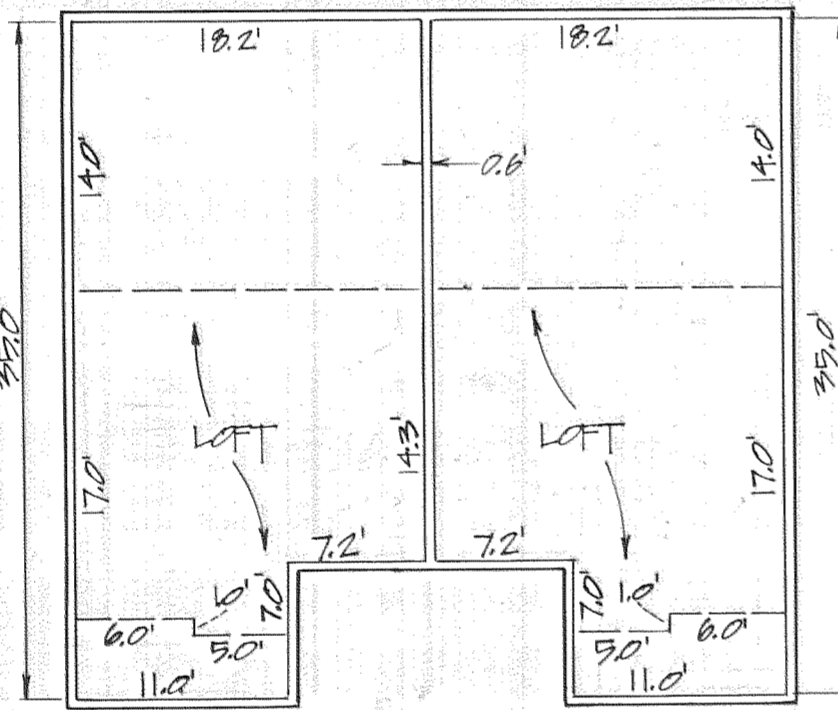
Richard G. Arnold
COUNTY SURVEYOR

NOTE: ALL WALL THICKNESSES 0.5' EXCEPT AS NOTED.



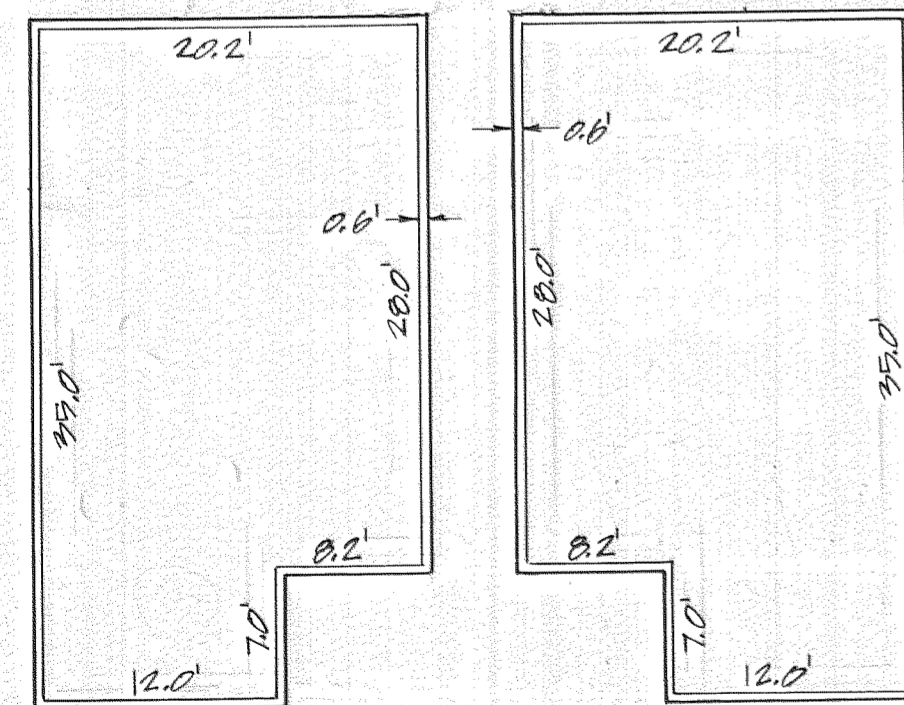
TYPICAL UNITS
115 113 111 109
105 103 101 117

TYPICAL UNITS
116 114 112 110
106 104 102 108



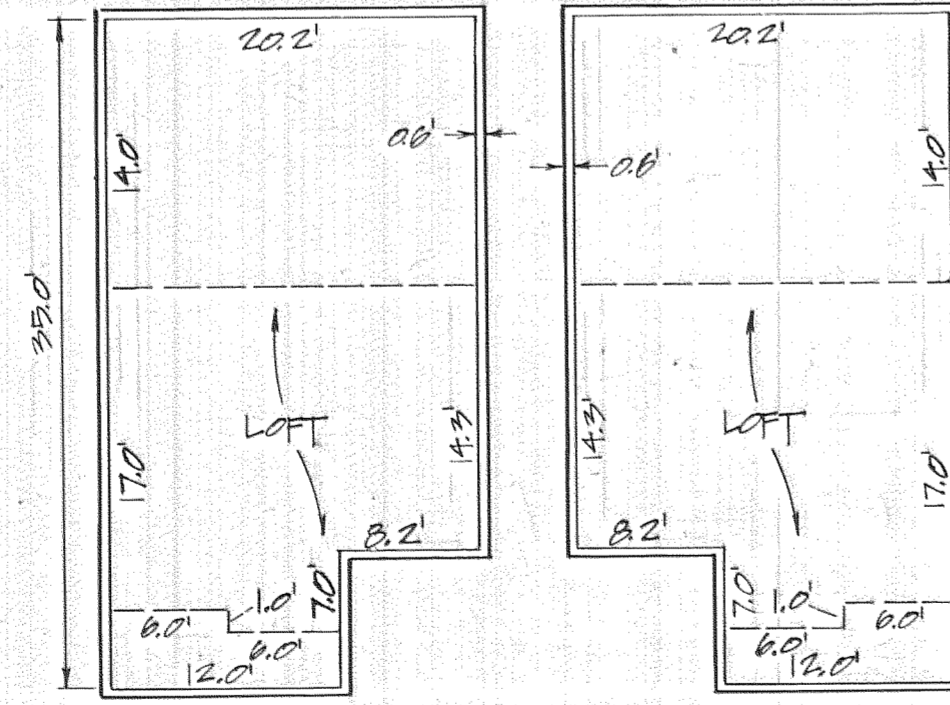
TYPICAL UNITS
217 215 213 211
209 205 203 201

TYPICAL UNITS
216 214 212 210
208 206 204 202



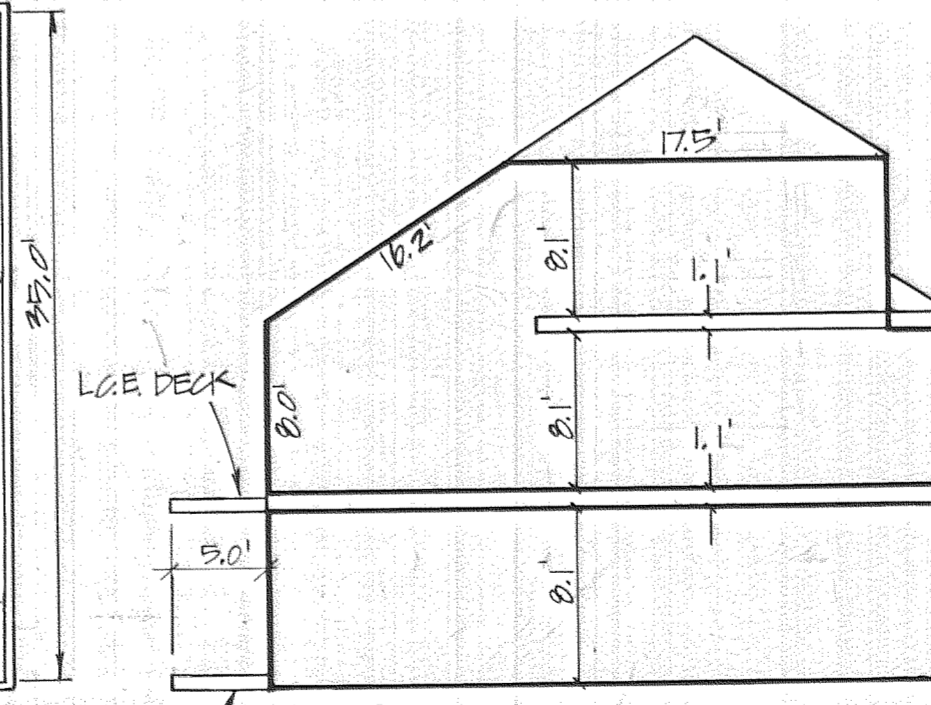
UNIT 107

UNIT 108



UNIT 207

UNIT 208



TYPICAL ELEVATION VIEW

GROUND FLOOR ELEVATIONS

UNITS	ELEVATION
100 THRU 103	173.79
104 THRU 107	175.79
108 THRU 109	177.72
110 THRU 113	179.71
114 THRU 117	181.73

BENCH MARKS - D.L.C. CORNER # 30, 8" X 8" IN STONE, ELEVATION 181.36 FEET, U.S.C. & G.S. DATUM, AS PER HOOD COUNTY SURVEYOR.

GORGE VIEW CONDOMINIUMS
LOCATED IN THE SE. 1/4 SECTION 26, T.3N., R.10E., W.M.
CITY OF HOOD RIVER, HOOD RIVER COUNTY, OREGON
DECEMBER, 1989

WILSEY & HAM PACIFIC
1099 SW. COLUMBIA ST.
(503) 227-0455
PROJ. NO. 4-373-0101

SCALE: 1" = 20'

SIDE 2 OF 2

DECLARATION:

KNOWN ALL MEN BY THESE PRESENTS THAT GORGE DEVELOPMENT GROUP, INC., AN OREGON CORPORATION, DOES HEREBY MAKE, ESTABLISH AND DECLARE THE ANNEXED MAP TO BE A TRUE, AND CORRECT MAP OF THE LAND OWNED AND LAID OUT BY THEM AS THE GORGE VIEW CONDOMINIUMS. SAID LAND BEING MORE PARTICULARLY DESCRIBED IN THE SURVEYOR'S CERTIFICATE HERETO ANNEXED AND THEY DO HEREBY COMMIT SAID PROPERTY AND IMPROVEMENTS DESCRIBED AND DEPICTED ON THE PLAT ARE SUBJECT TO THE PROVISIONS OF ORS. 100.005 TO 100.025.

GORGE DEVELOPMENT GROUP, INC.

Jane Schmid-Cook

JANE SCHMID-COOK - PRESIDENT

Rodney R. Cook

RODNEY R. COOK - VICE PRESIDENT

ACKNOWLEDGEMENTS

STATE OF OREGON
COUNTY OF HOOD RIVER

BE IT REMEMBERED: THAT ON THIS 21ST DAY OF December, 1989, BEFORE ME A NOTARY PUBLIC IN AND FOR SAID STATE AND COUNTY PERSONALLY APPEARED JANE SCHMID-COOK AND RODNEY R. COOK, WHO BEING FIRST DULY SWORN, UNDER OATH, DID SAY THAT THEY ARE PRESIDENT AND VICE PRESIDENT OF THE CORPORATION NAMED AND DESCRIBED IN THE FOREGOING INSTRUMENT AND THAT THEIR SIGNATURES AFFIXED TO SAID INSTRUMENT BY AUTHORITY OF ITS BOARD OF DIRECTORS ARE FREE ACT AND DEED OF SAID CORPORATION.

G. Robert Taylor
NOTARY PUBLIC FOR STATE OF OREGON

MY COMMISSION EXPIRES 9-11-90

FILED FOR RECORD

THIS _____ DAY OF _____, 1989

HOOD RIVER COUNTY DIRECTOR OF RECORDS AND ASSESSMENTS

G. Robert Taylor
G. ROBERT TAYLOR
NOTARY PUBLIC - OREGON
My Commission Expires 9-11-90