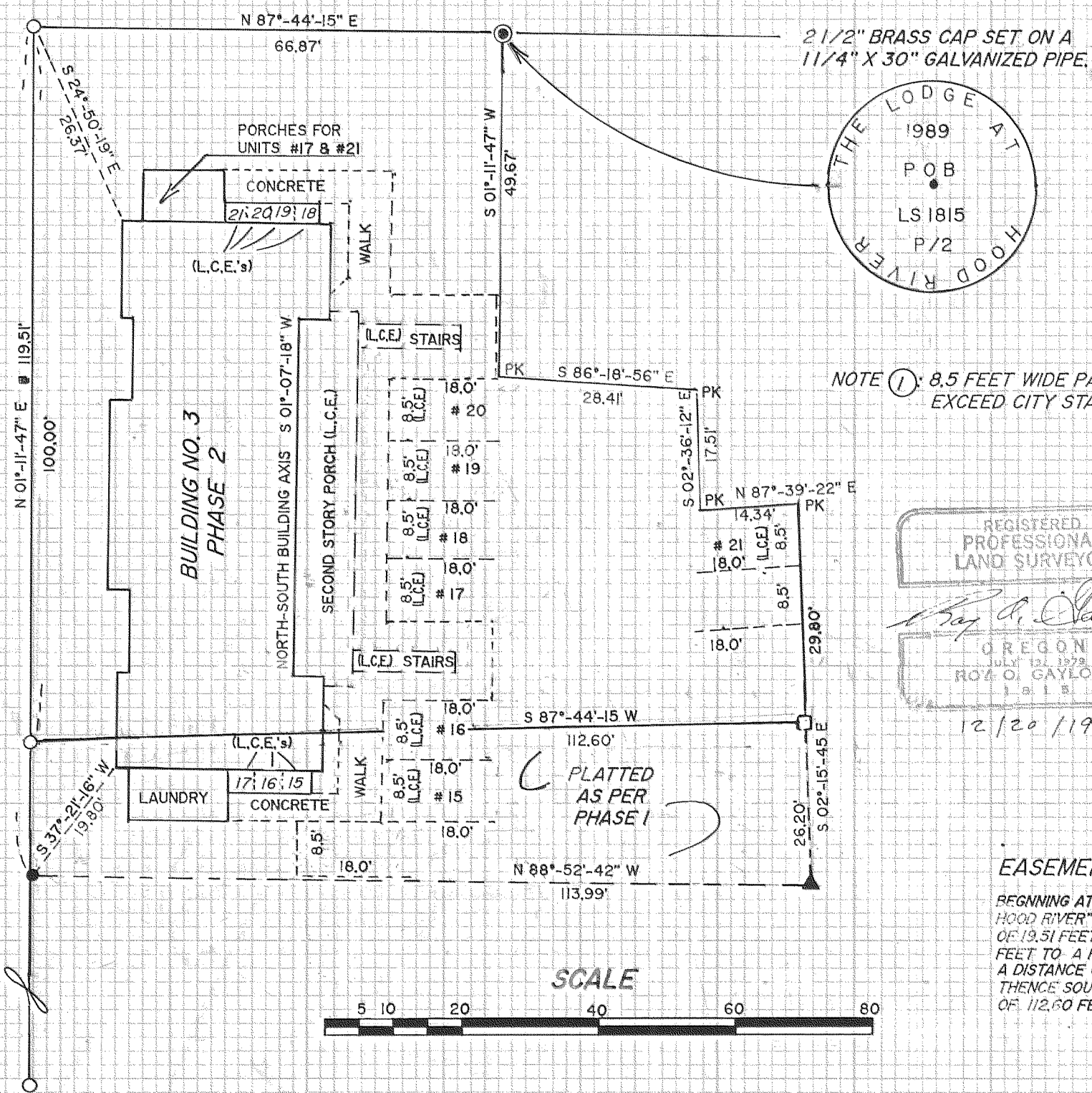
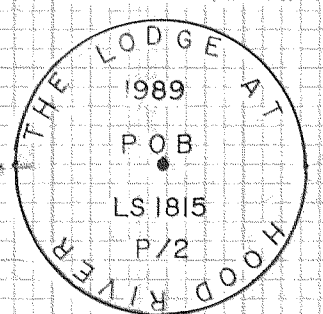


COLUMBIA ST.

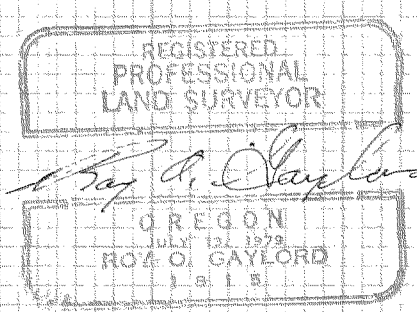
8th ST.



2 1/2" BRASS CAP SET ON A 1 1/4" X 30" GALVANIZED PIPE.

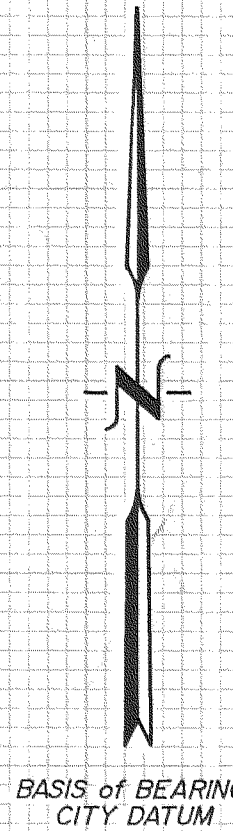


NOTE ①: 8.5 FEET WIDE PARKING SPACES EXCEED CITY STANDARDS.



EASEMENT DESCRIPTION:

BEGINNING AT THE NORTHWEST CORNER OF "PHASE I, THE LODGE AT HOOD RIVER" AS PLATTED, THENCE SOUTH 1° 11' 47" WEST A DISTANCE OF 19.51 FEET; THENCE SOUTH 88° 52' 42" EAST A DISTANCE OF 113.99 FEET TO A RAILROAD SPIKE SET IN ASPHALT; THENCE NORTH 2° 15' 45" EAST A DISTANCE OF 26.20 FEET TO THE NORTH LINE OF SAID "PHASE I"; THENCE SOUTH 87° 44' 15" WEST ALONG SAID NORTH LINE A DISTANCE OF 112.60 FEET TO THE POINT OF BEGINNING.



I HEREBY CERTIFY THAT THIS SHEET 1 AND SHEETS 2 AND 3 ARE A TRUE AND CORRECT COPY OF THE ORIGINAL PLAT OF THE LODGE AT HOOD RIVER, PHASE 2.

Roy O. Gaylord
 ROY GAYLORD, PLS 1815
 REVISED: JANUARY 24, 1990
Richard A. Arnold
 RECORDING OFFICER

COMMON ELEMENTS

THE GENERAL COMMON ELEMENTS CONSIST OF THE FOLLOWING, TO THE EXTENT THEY EXIST ON THE PROPERTY, AND EXCEPT AS PORTIONS THEREOF ARE EXPRESSLY DESIGNATED IN THIS DECLARATION AS PART OF A UNIT OR LIMITED COMMON ELEMENT:

- THE LAND, PATHWAYS, FENCES, GROUNDS, PARKING SPACES, AND LAUNDRY ROOMS AND FACILITIES;
- THE FOUNDATIONS, COLUMNS, GIRDERS, BEAMS, SUPPORTS, BEARING WALLS, PERIMETER WALLS, ROOFS, AND EXTERIOR PORCHES, CORRIDORS, LOBBIES, STAIRS, FIRE ESCAPES, ENTRANCES AND EXITS OF THE BUILDING(S);
- INSTALLATIONS OF CENTRAL SERVICES, SUCH AS POWER, LIGHT, GAS, HOT AND COLD WATER, HEATING, REFRIGERATION, AIR CONDITIONING, WASTE DISPOSAL AND INCINERATORS, UP TO THE OUTLETS WITHIN ANY UNITS;
- THE TANKS, PUMPS, MOTORS, FANS, COMPRESSORS, DUCTS AND IN GENERAL, ALL APPARATUS AND INSTALLATIONS EXISTING FOR THE COMMON USE; AND
- ALL OTHER ELEMENTS OF ANY BUILDING, NECESSARY OR CONVENIENT TO ITS EXISTENCE, MAINTENANCE AND SAFETY, OR NORMALLY IN COMMON USE.

LIMITED COMMON ELEMENTS (L.C.E.)

THE FOLLOWING CONSTITUTE LIMITED COMMON ELEMENTS, THE USE OF WHICH SHALL BE RESTRICTED TO THE UNIT(S) TO WHICH THEY PERTAIN:

- EACH UNIT IS ASSIGNED ONE EXTERIOR STORAGE AREA AND ONE PARKING SPACE BEARING THE SAME NUMBER AS THE NUMBER OF THE UNIT;
- UNITS 18 THROUGH 21 ARE JOINTLY ASSIGNED THE STAIRWAYS LEADING TO THE SECOND STORY OF BUILDING THREE AND THE SECOND STORY PORCH CONNECTING THE ENTRANCES TO THOSE UNITS.

SHEET 2 = APPROVALS
 SHEET 3 = BUILDING DIMENSIONS & ELEVATIONS

EQUIPMENT: TOPCON "GUPPY" GTS 10D WITH 5 SECOND HORIZONTAL ACCURACY, LAST INSPECTED: FEBRUARY, 1989 BY JOHNSON INSTRUMENT CO.

REFERENCES:
 PRIOR TERRA BLOCK 3 BOUNDARY SURVEY OF 1988 AND PHASE ONE CONDOMINIUM PLAT OF 1989.

NARRATIVE:
 FOUND NO MAJOR DISCREPANCIES AND LOCATED ALL MONUMENTS OF RECORD.

PHASE 2
 THE LODGE
 AT HOOD RIVER,
 A CONDOMINIUM

BEING ALL A PART OF BLOCK 3, WAUCOMA ADDITION TO THE CITY OF HOOD RIVER, COUNTY OF HOOD RIVER, STATE OF OREGON.

FILED
 FEB 2, 1990
Richard A. Arnold
 COUNTY SURVEYOR

LEGEND:
 ● SET MONUMENT AS NOTED
 ○ SET 5/8" IRON ROD W/ CAP
 □ CALCULATED NOT FOUND OR SET
 ○ FOUND MONUMENT OF RECORD
 ▲ SET R/R SPIKE WITH X
 PK SET PK NAIL IN ASPHALT

TERRA SURVEYING
 DATE: DECEMBER, 1989
 SCALE: 1" = 20'
 PROJECT: #8849

P.O. BOX 617
 HOOD RIVER, OR. 97031
 PHONE: (503) 386-4531
 SHEET 1 of 3

90002

DECLARATION:

KNOW ALL MEN BY THESE PRESENTS: THAT THE LODGE AT HOOD RIVER, INC., AN OREGON CORPORATION DOES HEREBY MAKE, ESTABLISH AND DECLARE THE ANNEXED MAP TO BE A TRUE, AND CORRECT MAP OF THE LAND OWNED AND LAID OUT BY THEM AS THE LODGE AT HOOD RIVER, PHASE 2. SAID LAND BEING MORE PARTICULARLY DESCRIBED IN THE SURVEYOR'S CERTIFICATE HERETO AFFIXED AND THEY DO HEREBY COMMIT SAID PROPERTY AND IMPROVEMENTS DESCRIBED AND DEPICTED ON THE PLAT ARE SUBJECT TO THE PROVISIONS OF O.R.S. 100.005 TO 100.990.

THE LODGE AT HOOD RIVER, INC.

Glen D. Haack
GLEN D. HAACK, SECRETARY-TREASURER

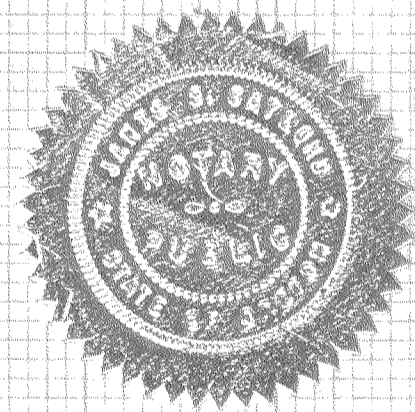
ACKNOWLEDGEMENTS:

STATE OF OREGON }
COUNTY OF HOOD RIVER } S.S.

BE IT REMEMBERED: THAT ON THIS 22 DAY OF December, 1989, BEFORE ME A NOTARY PUBLIC IN AND FOR SAID STATE AND COUNTY PERSONALLY APPEARED GLEN D. HAACK, WHO BEING FIRST DULY SWORN, UNDER OATH, DID SAY THAT HE IS SECRETARY-TREASURER OF THE CORPORATION NAMED AND DESCRIBED IN THE FOREGOING INSTRUMENT AND THAT HIS SIGNATURE AND OFFICIAL CORPORATE SEAL AFFIXED TO SAID INSTRUMENT BY AUTHORITY OF ITS BOARD OF DIRECTORS ARE THE FREE ACT AND DEED OF SAID CORPORATION.

Janis Gaylord
NOTARY PUBLIC FOR THE STATE OF OREGON

MY COMMISSION EXPIRES 12-12-1993



FILED FOR RECORD

THIS _____ DAY OF _____, 1990.

HOOD RIVER COUNTY DIRECTOR OF RECORDS AND ASSESSMENTS

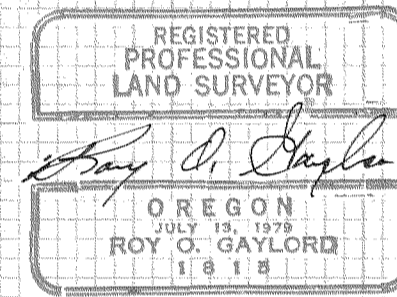
PHASE 2
THE LODGE
AT HOOD RIVER,
A CONDOMINIUM

SURVEYOR'S AFFIDAVIT:

I, ROY O. GAYLORD, BEING FIRST DULY SWORN, DEPOSE AND SAY THAT I HAVE CORRECTLY SURVEYED AND MARKED WITH PROPER MONUMENTS THE LANDS REPRESENTED ON THE ANNEXED MAP OF "THE LODGE AT HOOD RIVER, PHASE 2" AND THAT FOR THE INITIAL POINT OF THE SURVEY I SET A 1.25" X 30" GALVANIZED PIPE WITH 2.5 INCH BRASS CAP ATTACHED, SET IN CONCRETE, 6 INCHES BELOW THE SURFACE OF THE GROUND. AND SAID INITIAL POINT BEING LOCATED NORTH 87°-44'-15" EAST ALONG THE NORTH LINE OF BLOCK 3 A DISTANCE OF 66.87 FEET FROM THE NORTHWEST CORNER OF SAID BLOCK 3, WAUCOMA ADDITION TO THE CITY OF HOOD RIVER; THENCE SOUTH 01°-11'-47" WEST PARALLEL WITH THE WEST LINE OF SAID BLOCK 3 A DISTANCE OF 49.67 FEET; THENCE SOUTH 86°-18'-56" EAST A DISTANCE OF 28.41 FEET; THENCE SOUTH 02°-36'-12" EAST A DISTANCE OF 17.51 FEET; THENCE NORTH 87°-39'-22" EAST A DISTANCE OF 14.34 FEET; THENCE SOUTH 02°-15'-45" EAST A DISTANCE OF 29.80 FEET TO THE NORTH LINE OF "THE LODGE AT HOOD RIVER, PHASE 1" AS PLATTED; THENCE SOUTH 87°-44'-15" WEST ALONG THE NORTH LINE OF SAID PLAT A DISTANCE OF 112.60 FEET TO A 5/8 INCH BY 30 INCH IRON ROD WITH CAP SET IN THE WEST LINE OF SAID BLOCK 3; THENCE NORTH 01°-11'-47" EAST ALONG SAID WEST LINE TO THE NORTHWEST BLOCK 3 CORNER; THENCE NORTH 87°-44'-15" EAST A DISTANCE OF 66.87 FEET ALONG THE NORTH LINE OF BLOCK 3 TO THE POINT OF BEGINNING.

I, ROY O. GAYLORD, A REGISTERED PROFESSIONAL LAND SURVEYOR CERTIFY THAT THE PLAT FULLY AND ACCURATELY DEPICTS THE BOUNDRIES OF THE UNITS OF THE BUILDING AND THAT THE CONSTRUCTION OF THE UNITS AND BUILDINGS AS DEPICTED ON THE PLAT HAS BEEN COMPLETED.

THIS 14 DAY OF DECEMBER, 1989.



APPROVALS:

THE ANNEXED MAP OF THE LODGE AT HOOD RIVER, PHASE II WAS EXAMINED AND APPROVED BY ME

THIS 12 DAY OF JAN, 1990.

Chill Wane
HOOD RIVER CITY ENGINEER

THE ANNEXED MAP OF THE LODGE AT HOOD RIVER, PHASE II WAS EXAMINED AND APPROVED BY ME

THIS 15 DAY OF JAN, 1990.

Sandra L. Maddox
HOOD RIVER CITY PLANNING COMMISSION

THE ANNEXED MAP OF THE LODGE AT HOOD RIVER, PHASE II WAS EXAMINED AND APPROVED BY ME

THIS 9 DAY OF JAN, 1990.

Richard G. Arnold
HOOD RIVER COUNTY SURVEYOR

THE ANNEXED MAP OF THE LODGE AT HOOD RIVER, PHASE II WAS EXAMINED AND APPROVED BY ME

THIS 12 DAY OF JANUARY, 1990.

Kimberly A. Gustafson
MAYOR CITY RECORDER

THE DIRECTOR OF RECORDS AND ASSESSMENTS AND THE DIRECTOR OF BUDGET AND FINANCE AND TAX COLLECTOR, RESPECTIVELY OF HOOD RIVER COUNTY, OREGON, HEREBY CERTIFY THAT WE HAVE EXAMINED THE ANNEXED PLAT OF "THE LODGE AT HOOD RIVER, PHASE 2", IN THE CITY OF HOOD RIVER AND THE NAME ADOPTED FOR SAID PLAT IS A PROPER NAME AND NOT INCLUDED IN ANY OTHER SUBDIVISION IN HOOD RIVER COUNTY, AND FURTHER CERTIFY THAT ALL ASSESSMENTS DUE HEREON HAVE BEEN FULLY PAID AS REQUIRED BY LAW AND WE HEREBY APPROVE SAID PLAT.

Daniel Jay Chamness, CPA
HOOD RIVER COUNTY DIRECTOR OF BUDGET,
FINANCE AND TAX COLLECTOR

Sandra E. Berry
HOOD RIVER COUNTY DIRECTOR OF RECORDS
AND ASSESSMENTS

FILED

FEB 2, 1990

Richard G. Arnold
COUNTY SURVEYOR

DEPT 171

TERRA SURVEYING

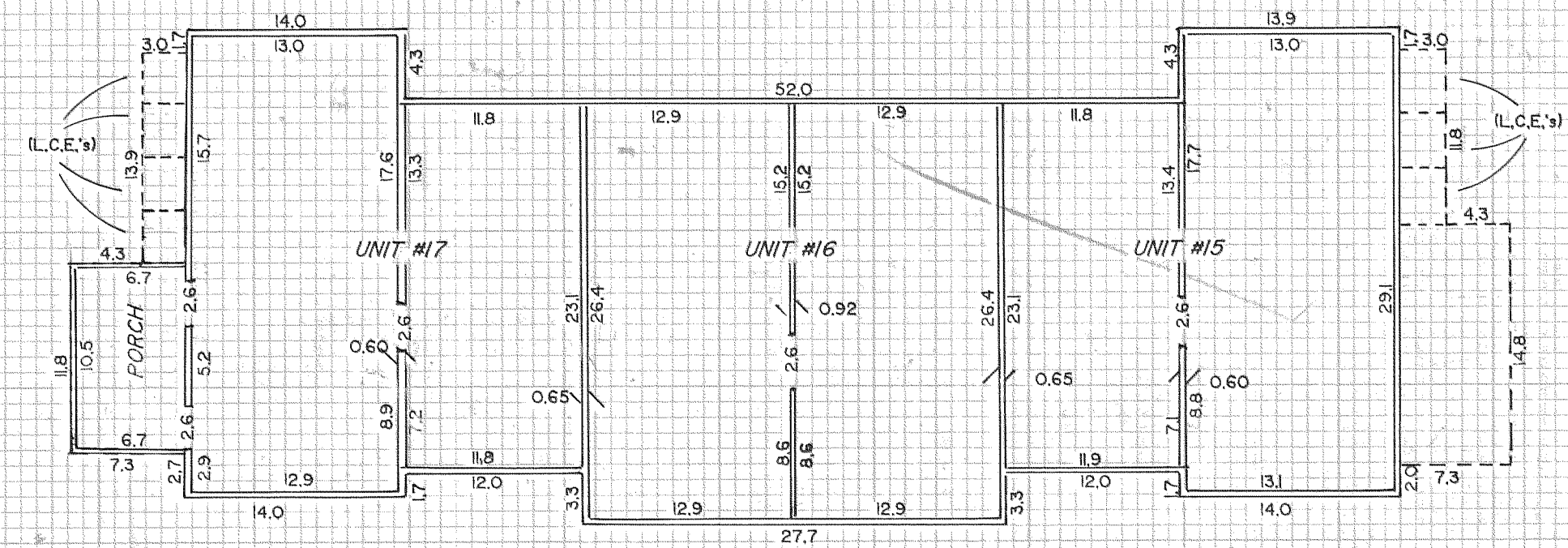
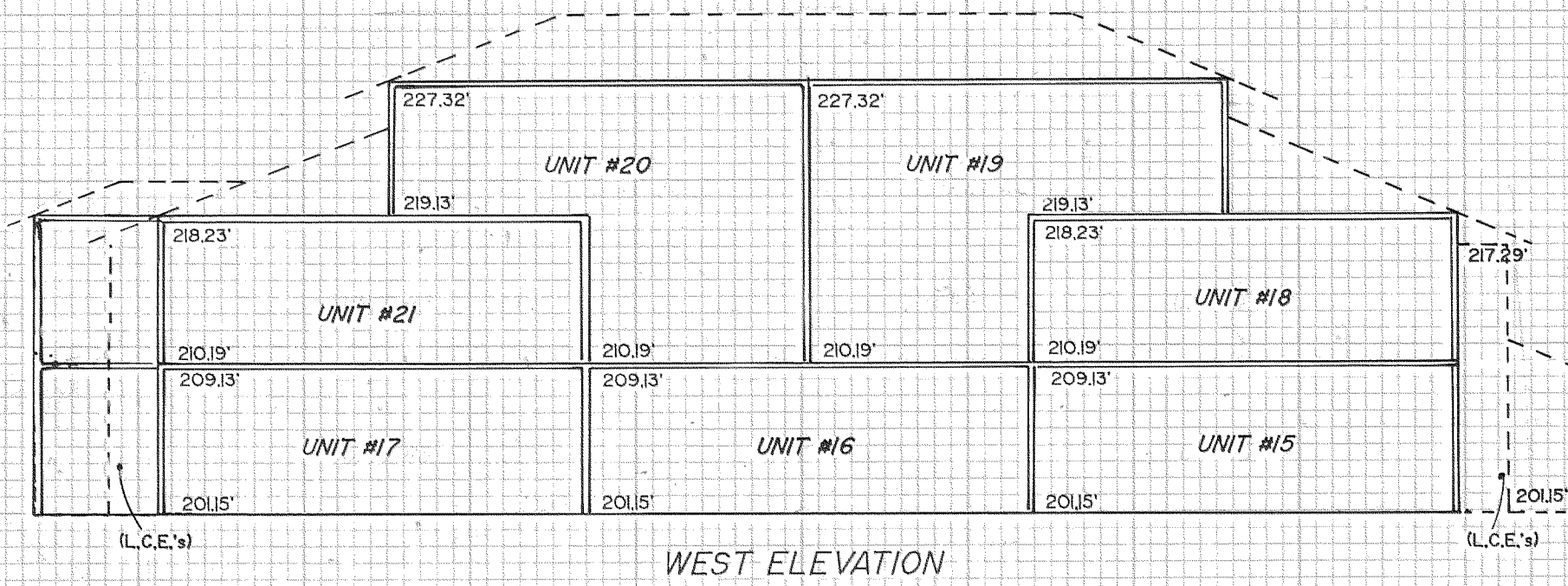
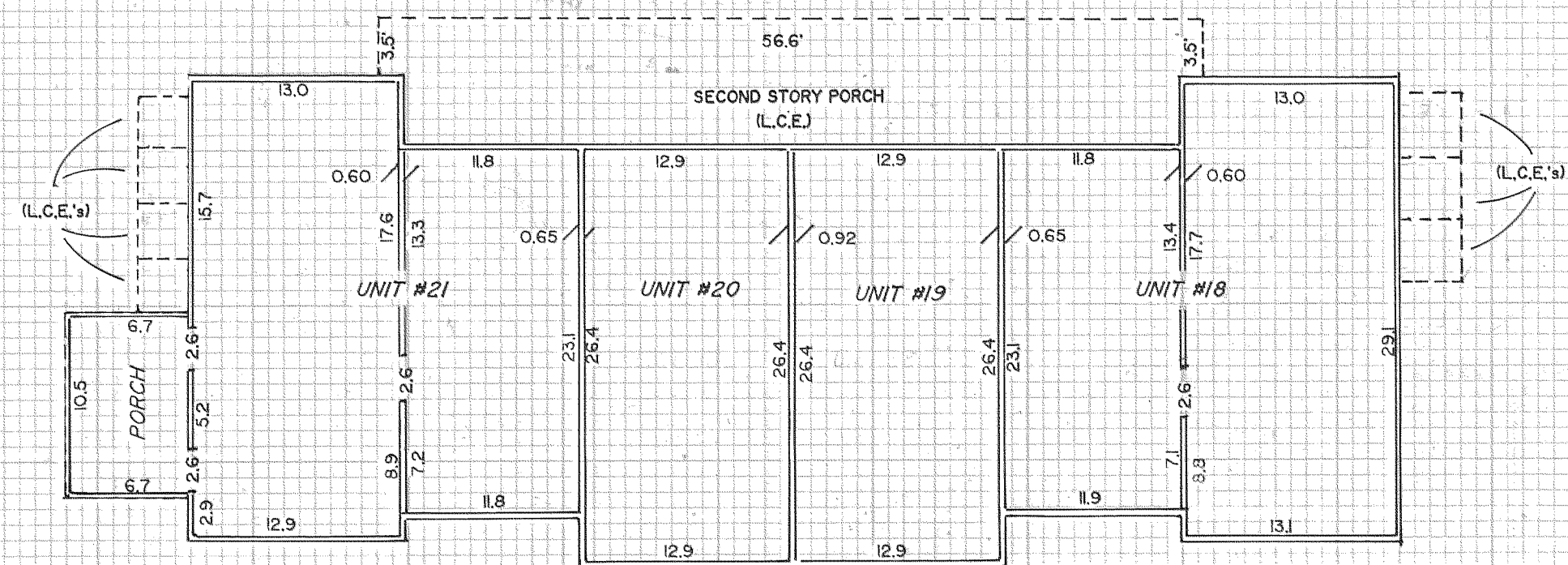
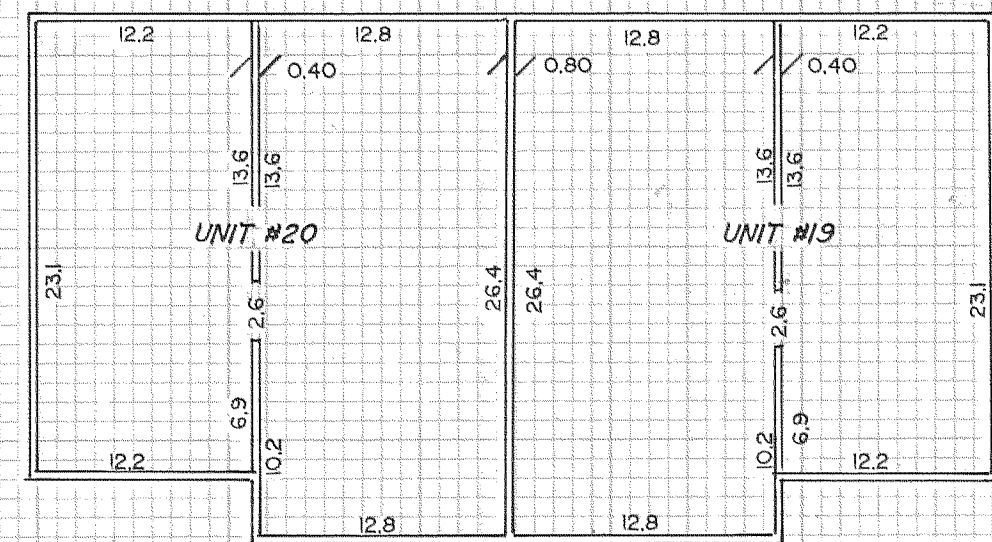
DATE: DECEMBER, 1989
SCALE: 1" = 20'
PROJECT: #8849

P.O. BOX 617
HOOD RIVER, OR. 97031

PHONE: (503) 386-4531

SHEET 2 of 3

90002



NOTE: VERTICAL DATUM BASED ON CITY OF HOOD RIVER SURVEY OF 1962 BASED ON MEAN SEA LEVEL.

(L.C.E.'s) = LIMITED COMMON ELEMENTS



PHASE 2
THE LODGE
AT HOOD RIVER,
A CONDOMINIUM

BEING ALL A PART OF
BLOCK 3, WAUCOMA ADDITION TO THE
CITY OF HOOD RIVER,
COUNTY OF HOOD RIVER,
STATE OF OREGON.

FILED

FEB 2, 1990

Richard W. Howell
COUNTY SURVEYOR

DEPUTY

TERRA SURVEYING

DATE: DECEMBER, 1989
SCALE: 1" = 10'
PROJECT: #8849

P.O. BOX 617
HOOD RIVER, OR. 97031
PHONE: (503) 386-4531

SHEET 3 of 3

90002