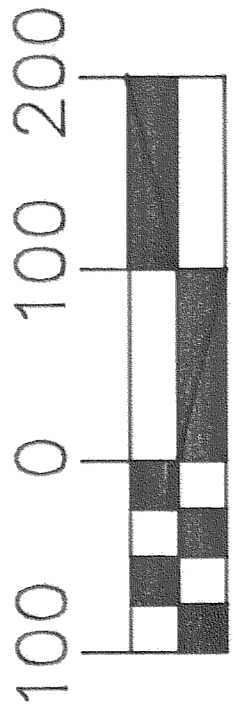


CONSTRUCTION CENTERLINE CURVE DATA  
 RADIUS: 100.00'  
 DELTA: 92-01-06  
 LENGTH: 160.60'  
 CHORD: 106.511  
 SINC TH: 98.602



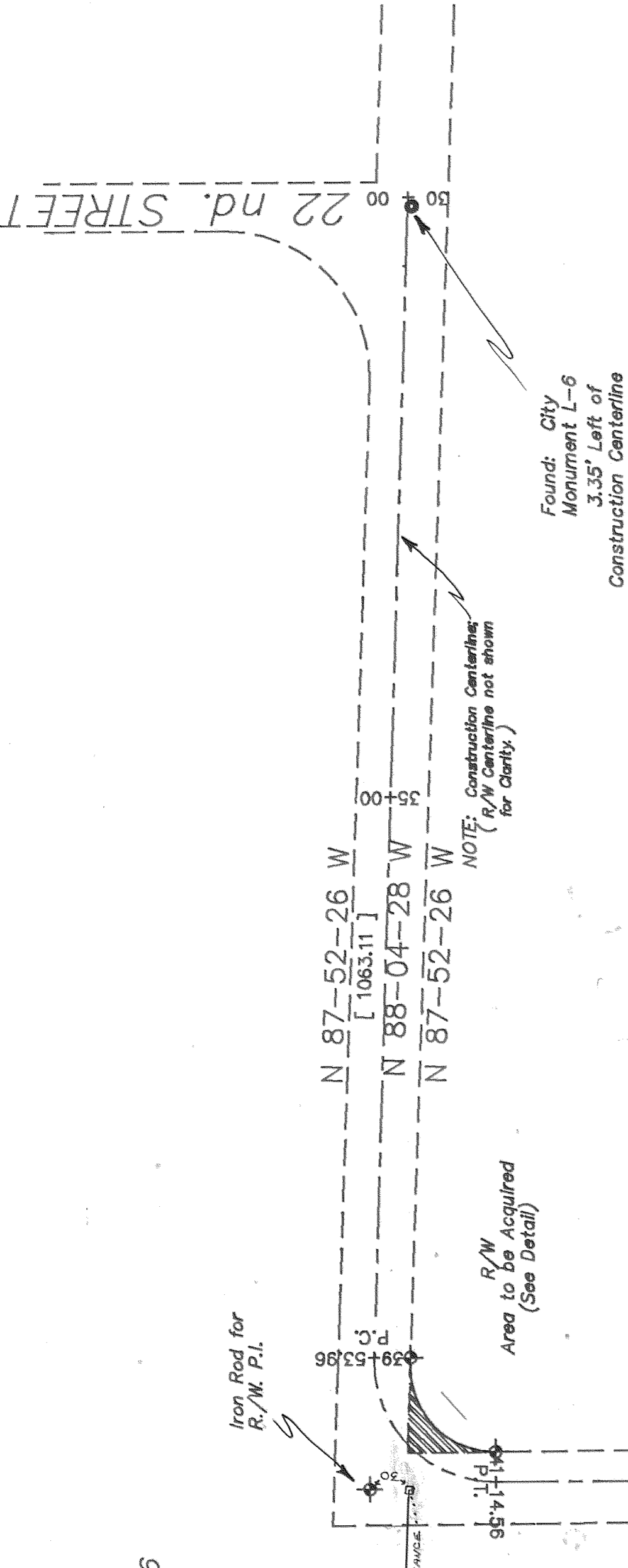
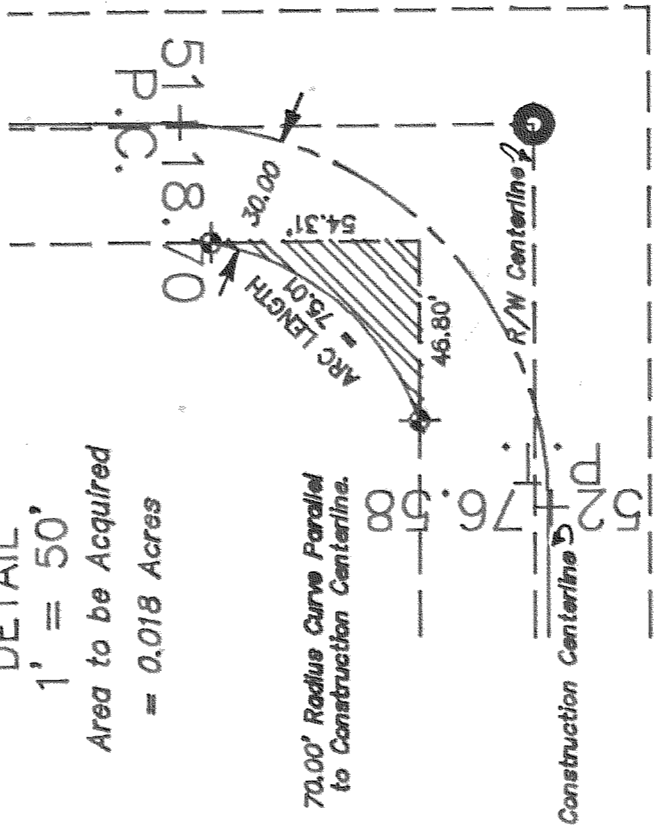
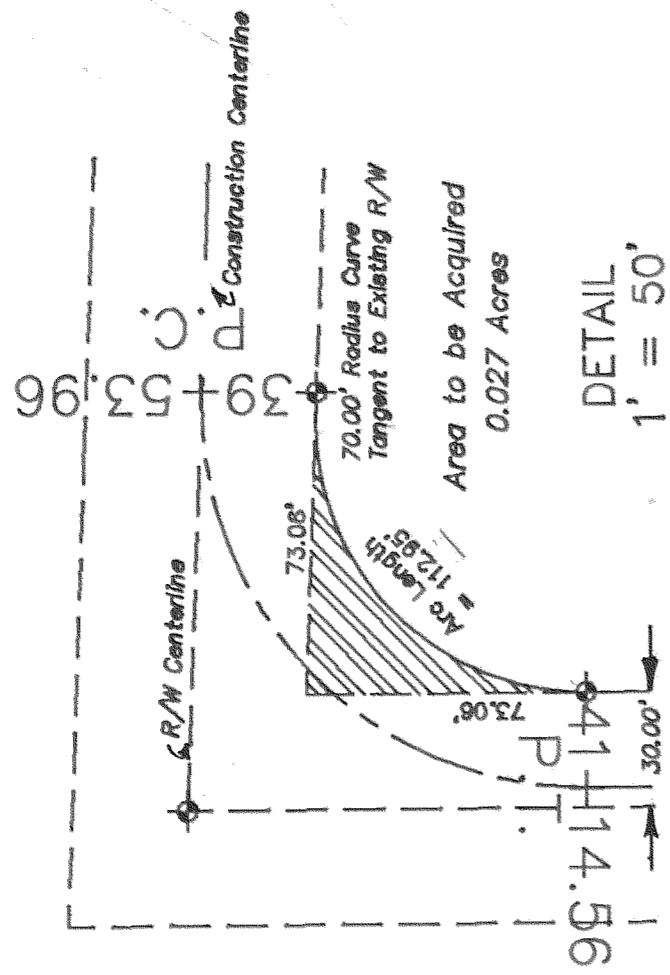
BASIS OF BEARING:  
 Assumed



NOTE: See separate Narrative on file at County Surveyor's Office.

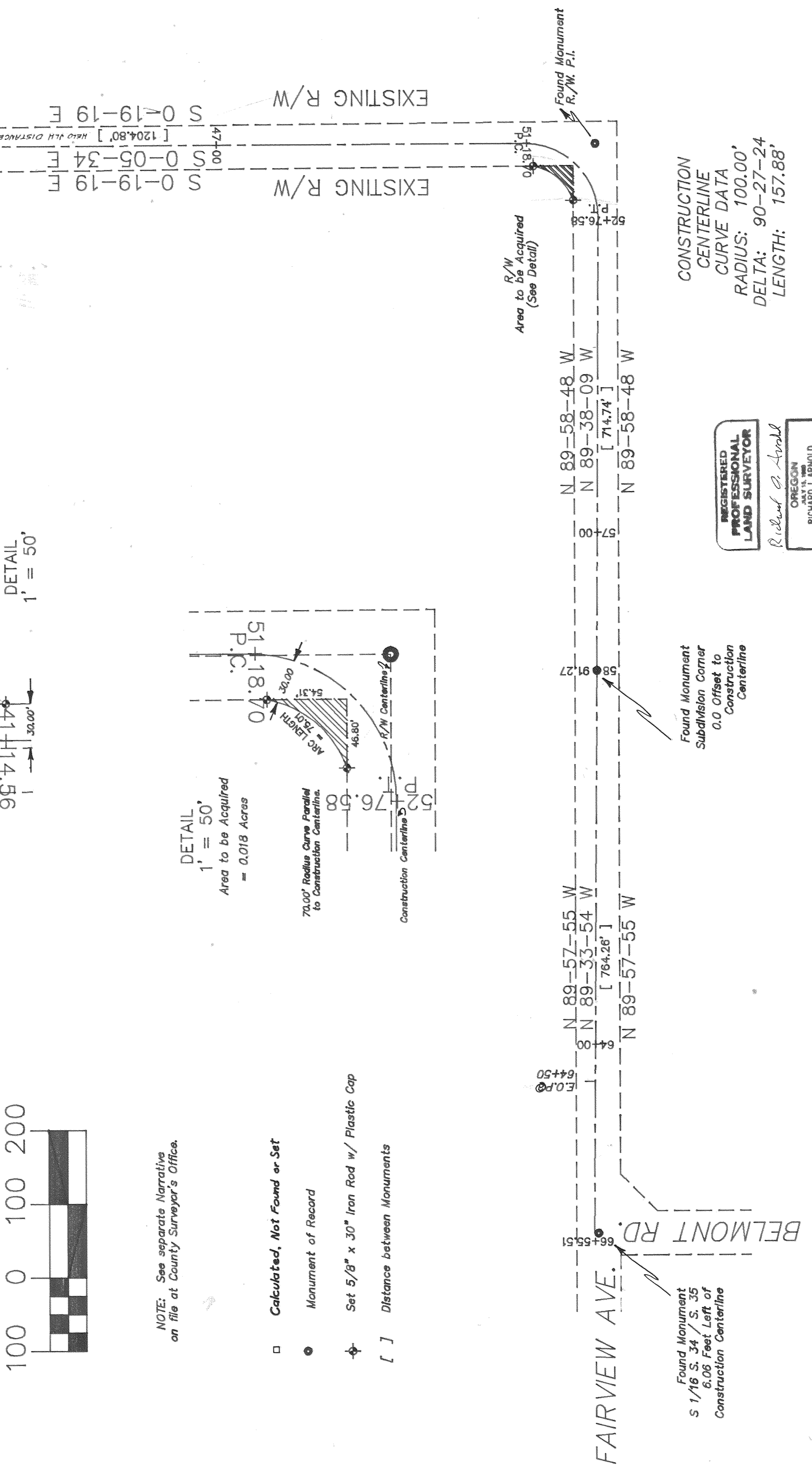
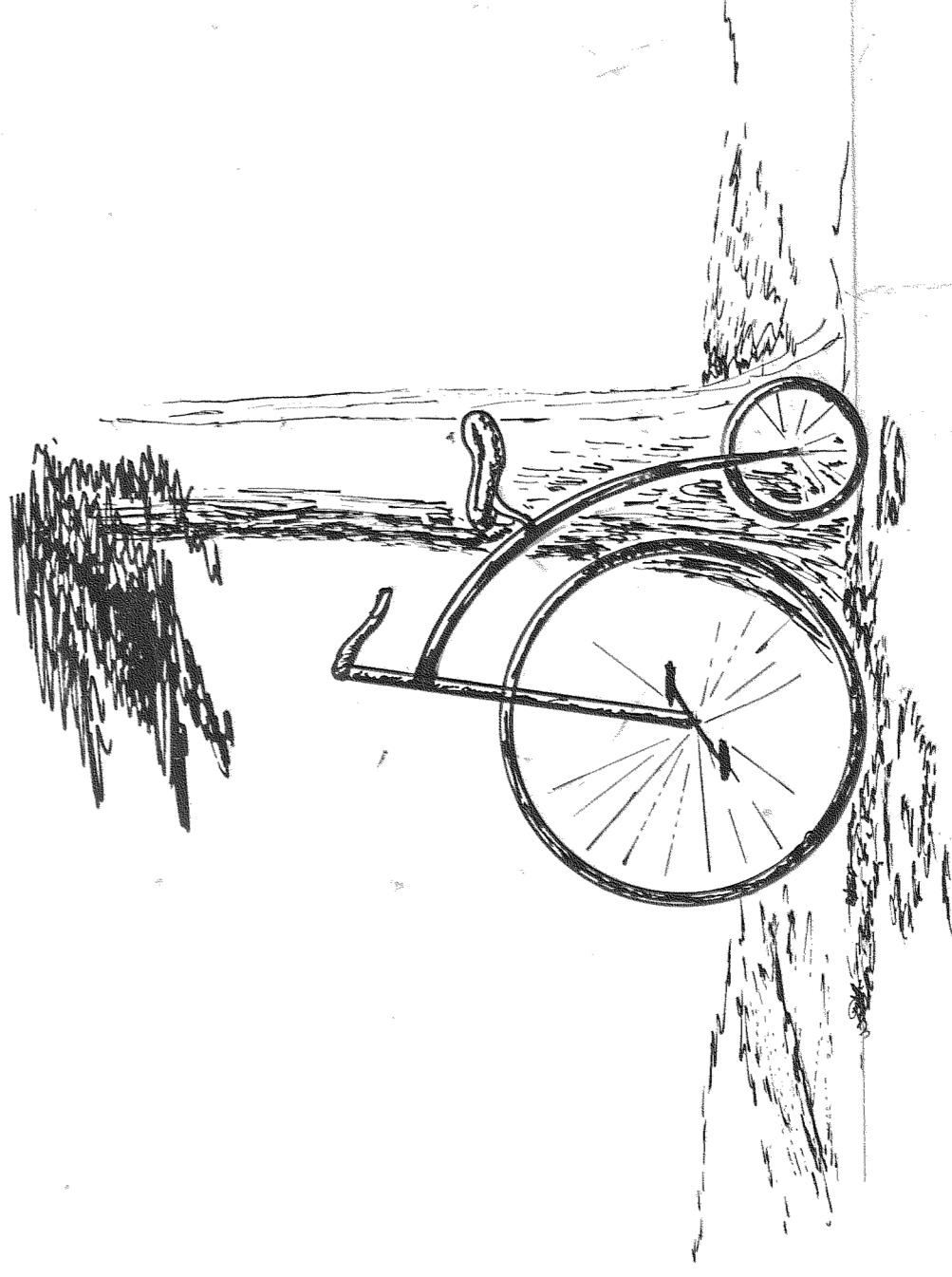
- Calculated, Not Found or Set
- Monument of Record
- ⊕ Set 5/8" x 30" Iron Rod w/ Plastic Cap
- [ ] Distance between Monuments

DETAIL  
 1" = 50'  
 Area to be Acquired  
 = 0.018 Acres



# PLAT of BELMONT ROAD RECONSTRUCTION

SECTION 35  
 T. 3 N., R. 10 E., W.M.



CONSTRUCTION CENTERLINE CURVE DATA  
 RADIUS: 100.00'  
 DELTA: 90-27-24  
 LENGTH: 157.88'

REGISTERED PROFESSIONAL LAND SURVEYOR  
 Richard C. Arnold  
 OREGON  
 MAY 11, 1988  
 RICHARD C. ARNOLD  
 2028

PROJECT ID: 89060  
 SHEET 1 OF 1

HOOD RIVER COUNTY  
 DEPT. OF PUBLIC WORKS



DRAWN BY:	NO	REVISIONS
DESIGN BY:		
CHECKED BY: RCB		
DATE: JUNE, 1989		
SCALE: 1" = 100'		