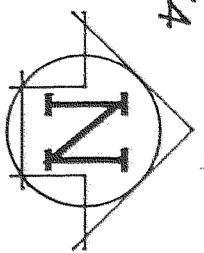
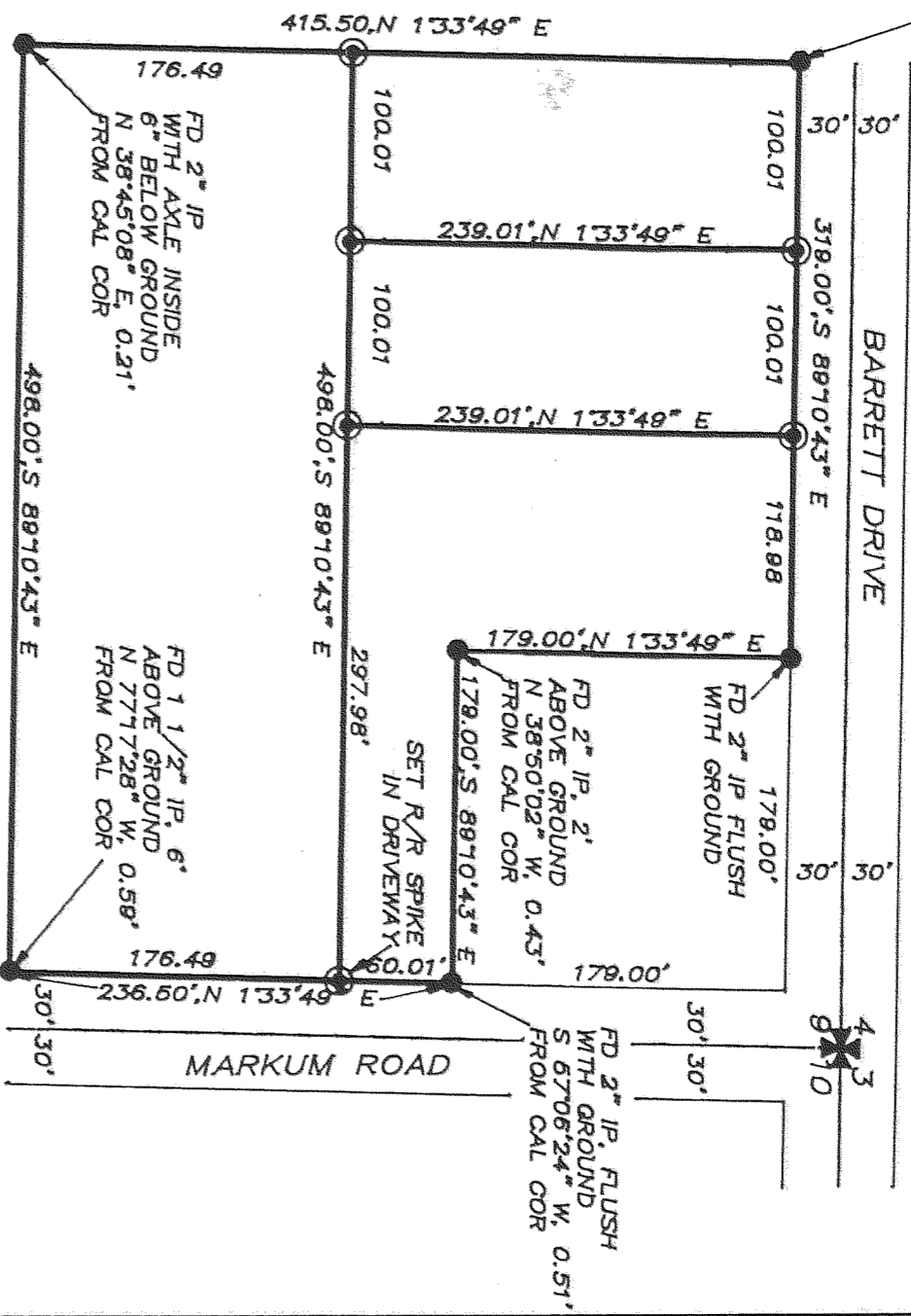


SURVEY IN THE NE 1/4 OF NE 1/4
 SEC 9, T 2 N, R 10 E, WM
 COUNTY OF HOOD RIVER
 STATE OF OREGON



FD 1 1/4" IP
 25" ABOVE GROUND
 N 70°45' W, 1.04'
 FROM CAL COR

SCALE 1"=100'
 BASIS OF BEARING
 CS #7339



- LEGEND
- FD MONUMENT AS NOTED
 - ⊙ SET 5/8" IR/ PLASTIC CAP EXCEPT AS NOTED

REFERENCE SURVEY
 CS #7339 BY JOHN PAETH
 MARCH 1973

FILED

RESUME:
 PURPOSE OF THE SURVEY WAS TO ESTABLISH LOT CORNERS FOR PARTON OF PROPERTY. A SURVEY BY JOHN PAETH WAS FOUND OF RECORD THAT ESTABLISHED THE CORNERS OF THE ORIGINAL PARCEL. THE PROPERTY OWNER HAD COVERED THE CORNERS THAT PAETH ESTABLISHED WITH LARGE IRON PIPES AND THE SET MONUMENTS WERE NOT ACCESSIBLE. THERE WERE SOME MINOR VARIANCES BETWEEN THE FOUND CORNERS AND THE CALCULATED CORNERS, BUT WERE ACCEPTABLE. ALL MONUMENTS FOUND AND SET ARE SHOWN ON THE PLAT WITH DISTANCES AND BEARINGS.

MARCH 3 1989
Richard G. Kline
 COUNTY SURVEYOR
 DEPUTY
 MARCH 1989

SURVEY FOR
 WILLIAM S. NEAL

REGISTERED
 PROFESSIONAL
 LAND SURVEYOR

Klein & Assoc.

LAND SURVEYING
 1109 Country Club Road
 Hood River, Oregon 97031
 Teler (503)386-3322

OREGON
 JULY 17, 1970
 ANTHONY C. KLEIN
 932

89022