

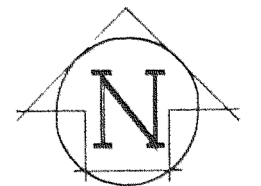
FD 1/2" IP

FD 5/8" IR/PLASTIC CAP

FD 5/8" IR/PLASTIC CAP

270.00', S 89°32'11" E

40.66'

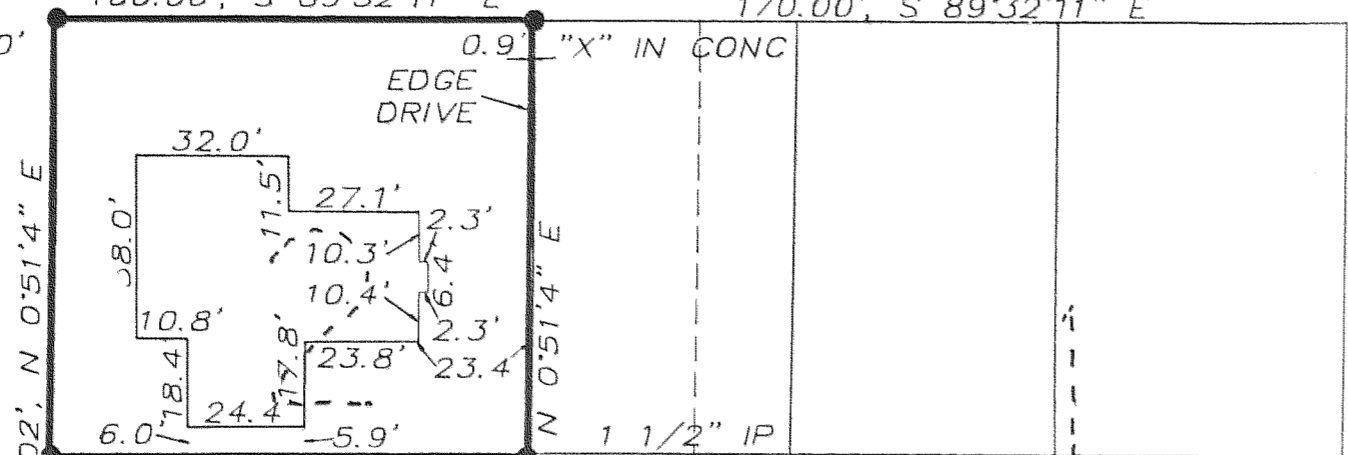


SCALE
1" = 40'

BASIS OF BEARING
WEST LINE OF 3RD STREET
AS PER TERRA SURVEYING
CS #85046, MAY 1985

JUNE ST

100.00', S 89°32'11" E 170.00', S 89°32'11" E



139.02', N 0°51'4" E 100.01', S 89°45'11" E

48.00' 138.64' N 0°51'4" E

100.01', S 89°45'11" E

4TH ST

163.02', N 0°51'4" E

FD 3/4" IP
S 22°30'00" W, 1.34'
FROM CALC. COR.

FD 5/8" IR
S 19°16'09" W, 1.49'
FROM CALC. COR.

267.06', S 89°58'28" E

3RD ST

300.00', N 0°50'40" E

570.25', N 0°54'39" E

PINE ST

270.07', S 89°58'28" E

FD AXEL
S 27°34'27" W, 0.47'
FROM CALC. COR

FD AXEL
S 12°37'41" W, 1.10'
FROM CALC. COR.

FD 5/8" IR
S 56°34'12" E, 5.09'
FROM CALC. COR

146.32', N 0°51'4" E

150.02', N 0°50'40" E

FD R/R SPIKE

FD R/R SPIKE

270.06', S 89°11'27" E

REFERERNC SURVEYS:

- TERRA SURVEYING - CS#85046 - 5/85
- TERRA SURVEYING - CS#82032 - 12/10/81
- BISHOP SURVEYING - CS#80026 - 8/21/79
- DIELSCHNEIDER & ASSOC - CS#7358
- NEWTON SURVEYING - CS#7208

NARRATIVE

In order to establish the corners of the proposed lots it was necessary to establish the centerline of the streets surrounding the block. I researched the County Survey records and reviewed all surveys in the adjacent blocks. All existing monuments that were found, were tied and the street centerlines were established. I used CS#85406 and CS#82032 to establish the West line of 3rd Street and the North line of June Street. I held the monument found at the Northwest corner of 4th and Pine Street (CS#7208) and used the distance as shown on CS#85046 to calculate the Northwest corner of 3rd and Pine Street and the Northeast corner of 4th and June Street. Although there were some discrepancies in bearing and distances, the lines established fit the existing improvements. All monuments found and established and their relationship to the computed corners are shown.

LEDGEND

- SET 5/8" IR/WITH PLASTIC CAP UNLESS NOTED
- FOUND MONUMENT AS NOTED
- CALCULATED CORNER
- *** FENCE

LEGAL DESCRIPTION

The West 100 feet of Lot 2, Block 8, PARKHURST, in the city of Hood River, County of Hood River and State of Oregon, EXCEPT the South 12 feet.

REGISTERED
PROFESSIONAL
LAND SURVEYOR

OREGON
JULY 17, 1979
ANTHONY C. KLEIN
932

SURVEY FOR
ROBERT HANNEL
OCTOBER, 1988

FILED

NOV 14 1988

Richard G. Dunde
COUNTY SURVEYOR

DEPUTY

Klein & Assoc.

LAND SURVEYING
1109 Country Club Road
Hood River, Oregon 97031
Tele: (503)386-3322

88061