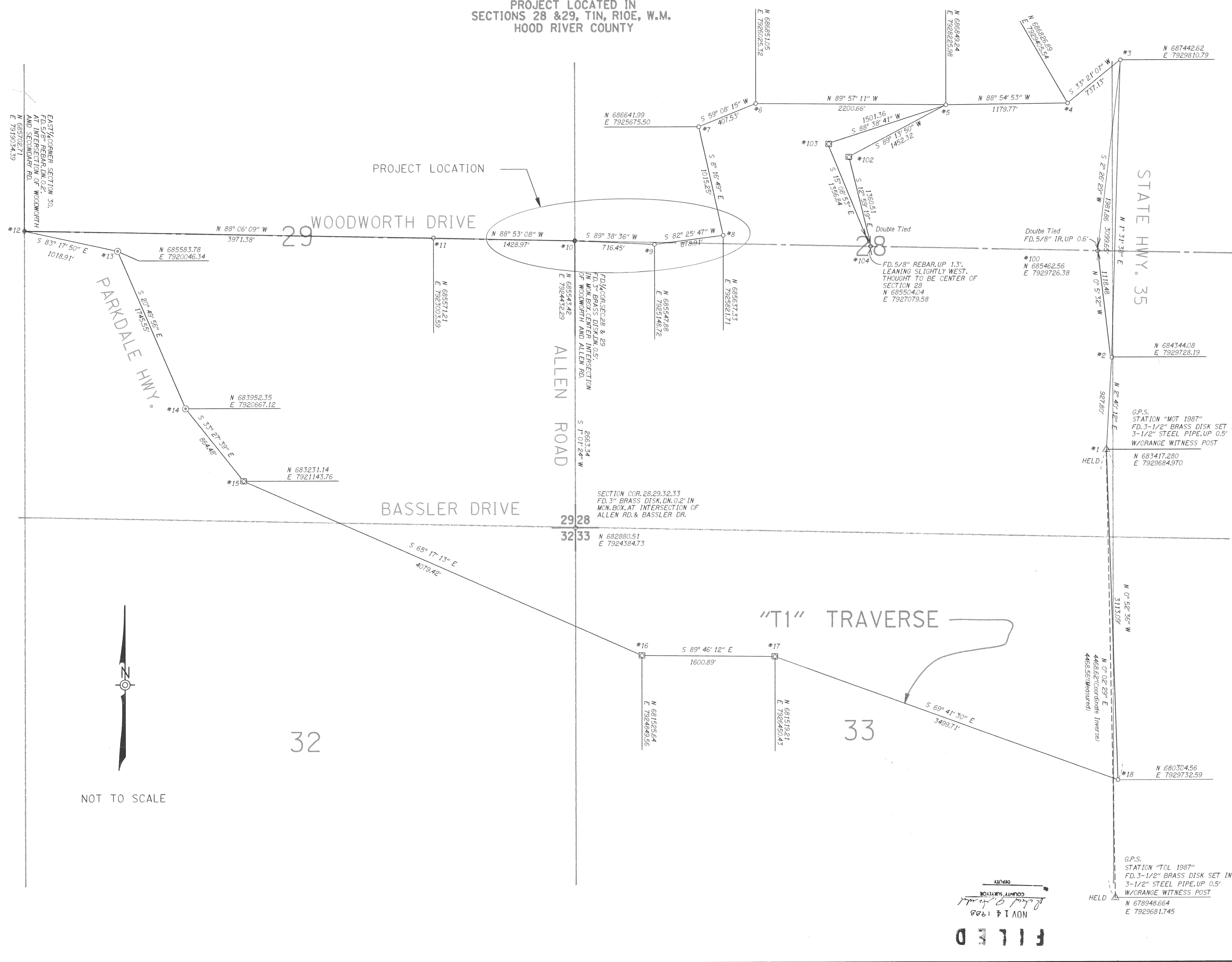


PROJECT LOCATED IN
SECTIONS 28 & 29, T1N, R10E, W.M.
HOOD RIVER COUNTY



NARRATIVE

Lyle Riggers, N.G.S. advisor to O.S.H.D. set and established NAD 1983 coordinates at stations "MOT 1987" and "TOL 1987" utilizing Global Positioning Systems.

A closed traverse was run, beginning and ending at station "MOT 1987". Relative Accuracy of Traverse is 1:273,000.

Held bearing of N 00° 02' 29" E between stations "MOT 1987" and "TOL 1987" as basis of bearings for this traverse and project.

Gov't corners were occupied or double tied, except section corner common to sections 28, 29, 32, 33 was single tied.

NOTES

1. 1983 NAD State Plane coordinates received from NGS by phone. Coordinates in meters, then converted to International feet.
2. Project Site Latitude 45° 32' 30". Average Elevation is 1485 Ft.
3. Coordinates Shown are L.D.P. To convert L.D.P. coordinates to State Plane coordinates multiply by 0.999838300.
4. Used 1 second T-2000 theodolite, DI-5 E.D.M., Tribrachs with 20 second bubbles and hand held staff with 1 minute circle bubble.
5. Angles were measured to an accuracy range of +/- 1 second to +/- 5 seconds with 95% certainty.
6. Distances have a 95% certainty of 0.02 feet plus D/250,000 where D is distance shown.
7. Distances shown are true ground distances. To convert L.D.P. distances to State Plane multiply by 0.999838300.

LEGEND

- △ G.P.S. Station
- Found Monument as Described
- Set 5/8" IR W/Red Plastic Cap Inscribed "OSHD"
- ⊗ Set Hub and Tack
- ⊙ Set PK Nail and Shiner

Oregon Department of Transportation
**MT. HOOD WINERY - EMIL CREEK
WOODWORTH DRIVE**

HORIZONTAL CONTROL SKETCH

NOT TO SCALE HOOD RIVER COUNTY

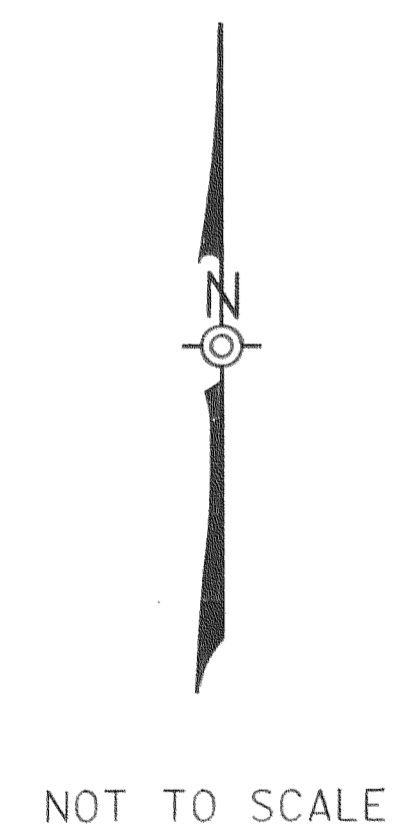
PROJECT MANAGER: L. SPISLA BEARINGS: STATE PLANE, NORTH ZONE

PROJECT DESIGNER: C. HANSEN VERT. DATUM: 1929

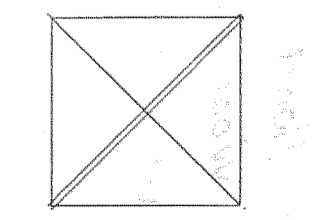
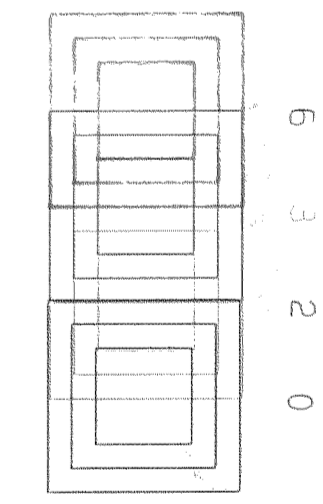
EA# C5141917/000-900 COORD.: 1983 NAD, L.D.P.

GRID FACTOR: 0.999838300

OCTOBER 1988



COUNTY SURVEYOR
 NOV 14 1988
 FILED



10-OCT-1988 12:02
 053:121,101WINPRF.DGN

88060