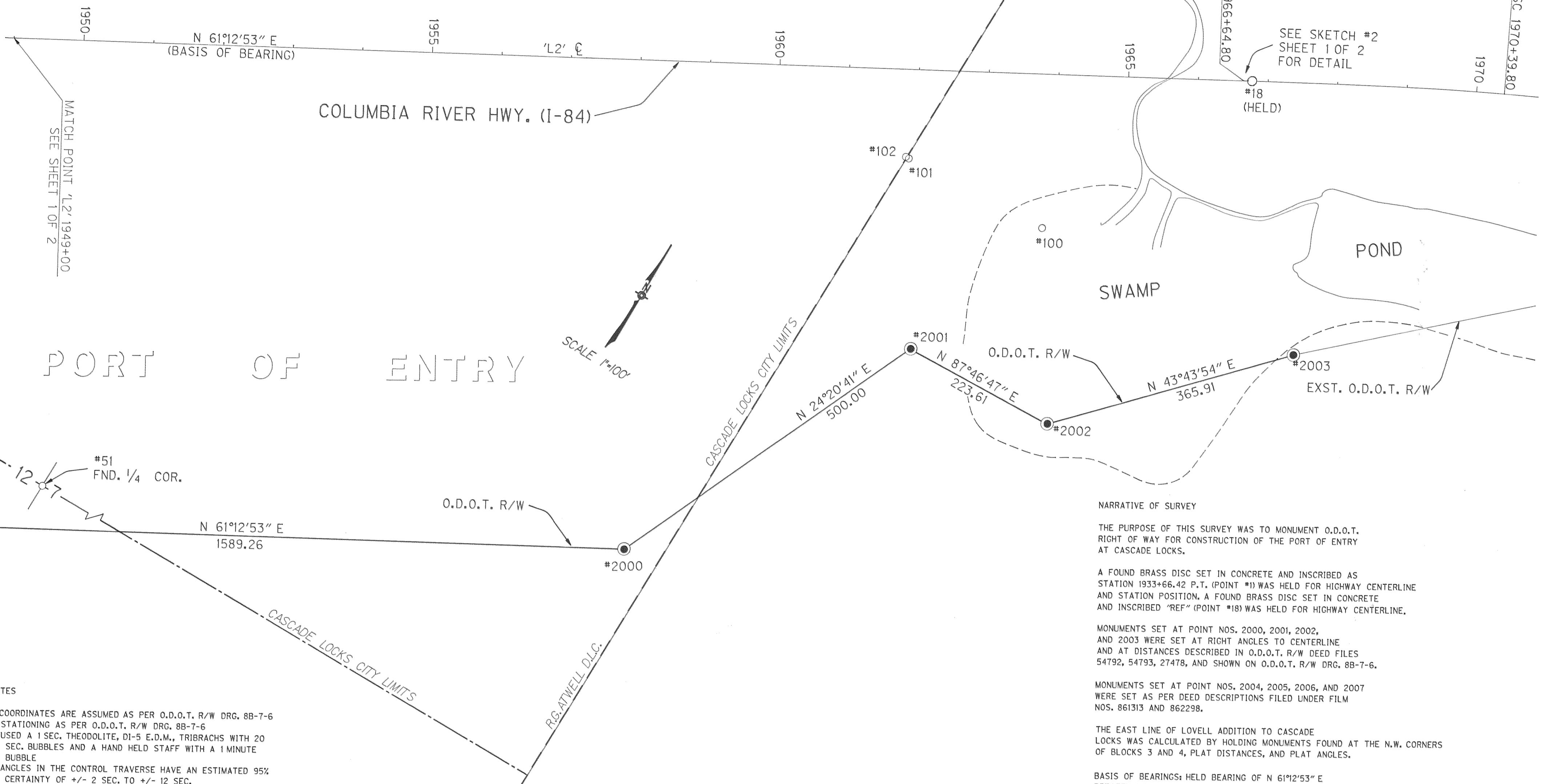


A RECORD OF SURVEY IN THE
N.W. & S.W. 1/4'S OF SECTION 7 T.2N. R.8E. W.M.,
R.G. ATWELL D.L.C.,
CITY OF CASCADE LOCKS,
HOOD RIVER COUNTY, OREGON



MATCH POINT 'L2' 1949+00
SEE SHEET 1 OF 2

SEE SKETCH #2
SHEET 1 OF 2
FOR DETAIL

SCALE 1"=100'

PORT OF ENTRY

SWAMP

POND

#51
FND. 1/4 COR.

N 61°12'53" E
1589.26

O.D.O.T. R/W

#2000

CASCADE LOCKS CITY LIMITS

R.G. ATWELL D.L.C.

N 24°20'41" E
500.00

#2001

N 87°46'47" E
223.61

#2002

O.D.O.T. R/W

N 43°43'54" E
365.91

#2003

EXST. O.D.O.T. R/W

NARRATIVE OF SURVEY

THE PURPOSE OF THIS SURVEY WAS TO MONUMENT O.D.O.T. RIGHT OF WAY FOR CONSTRUCTION OF THE PORT OF ENTRY AT CASCADE LOCKS.

A FOUND BRASS DISC SET IN CONCRETE AND INSCRIBED AS STATION 1933+66.42 P.T. (POINT #1) WAS HELD FOR HIGHWAY CENTERLINE AND STATION POSITION. A FOUND BRASS DISC SET IN CONCRETE AND INSCRIBED "REF" (POINT #18) WAS HELD FOR HIGHWAY CENTERLINE.

MONUMENTS SET AT POINT NOS. 2000, 2001, 2002, AND 2003 WERE SET AT RIGHT ANGLES TO CENTERLINE AND AT DISTANCES DESCRIBED IN O.D.O.T. R/W DEED FILES 54792, 54793, 27478, AND SHOWN ON O.D.O.T. R/W DRG. 88-7-6.

MONUMENTS SET AT POINT NOS. 2004, 2005, 2006, AND 2007 WERE SET AS PER DEED DESCRIPTIONS FILED UNDER FILM NOS. 861313 AND 862298.

THE EAST LINE OF LOVELL ADDITION TO CASCADE LOCKS WAS CALCULATED BY HOLDING MONUMENTS FOUND AT THE N.W. CORNERS OF BLOCKS 3 AND 4, PLAT DISTANCES, AND PLAT ANGLES.

BASIS OF BEARINGS: HELD BEARING OF N 61°12'53" E BETWEEN MONUMENTS HELD FOR HIGHWAY CENTERLINE. "GRID BEARING - NORTH ZONE" AS PER O.D.O.T. R/W DRG. 88-7-6.

COORDINATES: ASSUMED AS PER O.D.O.T. R/W DRG. 88-7-6

COMPLETED SETTING MONUMENTS AUGUST 1988

REFERENCES: SURVEYS- 79044
LOVELL ADDITION TO CASCADE LOCKS SUBDIVISION
DEEDS- BOOK 58 PAGE 606
O.D.O.T. R/W FILES- 27478, 29232, 54790, 54792, 54793
MAP- O.D.O.T. R/W DRG. 88-7-6

- NOTES
- COORDINATES ARE ASSUMED AS PER O.D.O.T. R/W DRG. 88-7-6
 - STATIONING AS PER O.D.O.T. R/W DRG. 88-7-6
 - USED A 1 SEC. THEODOLITE, DI-5 E.D.M., TRIBRACHS WITH 20 SEC. BUBBLES AND A HAND HELD STAFF WITH A 1 MINUTE BUBBLE
 - ANGLES IN THE CONTROL TRAVERSE HAVE AN ESTIMATED 95% CERTAINTY OF +/- 2 SEC. TO +/- 12 SEC.
 - DI-5 E.D.M. STANDARD DEVIATION IS 3MM + 2PPM

LOUIS J. SPISLA PROJECT MANAGER
OREGON DEPT. OF TRANSPORTATION
9002 S.E. MCLOUGHLIN BLVD.
MILWAUKIE, OR 97222

- LEGEND
- FOUND MONUMENT AS NOTED
 - SET 5/8" IRON ROD WITH YELLOW PLASTIC CAP STAMPED 'OSHD' IN CONCRETE
 - D.L.C. BOUNDARY
 - - - CITY LIMITS BOUNDARY

POINT # SET	N	E	LOCATION
2000	733508.71	1648464.87	700.00' RT. OF 'L2' STA 1958+00.00 P.O.T.
2001	733964.25	1648670.99	400.00' RT. OF 'L2' STA 1962+00.00 P.O.T.
2002	733972.91	1648894.42	500.00' RT. OF 'L2' STA 1964+00.00 P.O.T.
2003	734237.32	1649147.38	390.00' RT. OF 'L2' STA 1967+50.00 P.O.S.

POINT # FND	N	E	DESCRIPTION OF MONUMENTS FOUND
18	734543.32	1648894.26	2 3/4" BRASS DISC IN CONCRETE MARKED "STATE HWY. DEPT. REFERENCE REF"
100	734210.42	1648744.99	5/8" IRON ROD FLUSH, GOOD CONDITION, 1.0' E. OF 4X4 WOOD WITNESS POST
101	734198.09	1648530.20	5/8" IRON ROD UP 0.5', GOOD CONDITION, BY OLD 2X2 WITNESS POST
102	734197.98	1648525.36	5/8" IRON ROD UP 0.1', GOOD CONDITION, BY OLD 4X4 WITNESS POST
51	733159.90	1647193.73	3" BRASS DISC IN A STEEL PIPE 1/4 S12 S7 T2N R7E R8E 1987 LS 896

FILED

OCT 14, 1988

Richard G. Arnold
COUNTY SURVEYOR

REGISTERED PROFESSIONAL LAND SURVEYOR

Louis J. Spisla

OREGON
JULY 12, 1968
LOUIS J. SPISLA
870