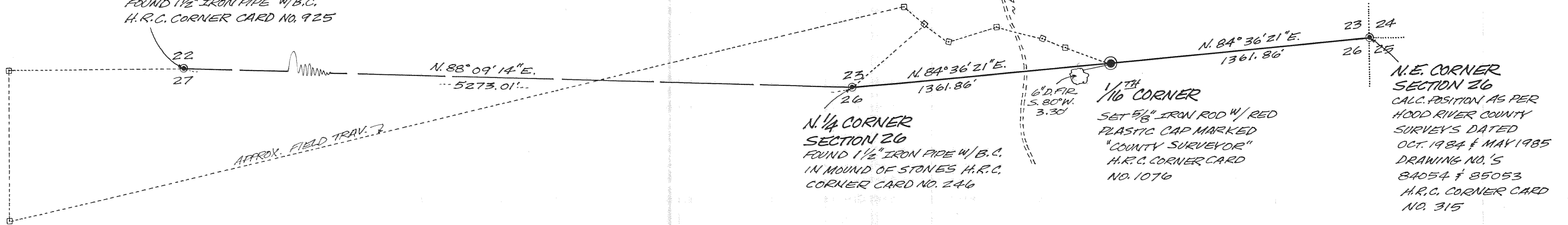


N. 1/4 CORNER
SECTION 27
FOUND 1 1/2" IRON PIPE W/B.C.
H.R.C. CORNER CARD NO. 925



N.E. CORNER
SECTION 26
CALC. POSITION AS PER
HOOD RIVER COUNTY
SURVEYS DATED
OCT. 1984 & MAY 1985
DRAWING NO. 5
84054 & 85053
H.R.C. CORNER CARD
NO. 315

N. 1/4 CORNER
SECTION 26
FOUND 1 1/2" IRON PIPE W/B.C.
IN MOUND OF STONES H.R.C.
CORNER CARD NO. 246

1/16 CORNER
SET 5/8" IRON ROD W/ RED
PLASTIC CAP MARKED
"COUNTY SURVEYOR"
H.R.C. CORNER CARD
NO. 1076

NARRATIVE

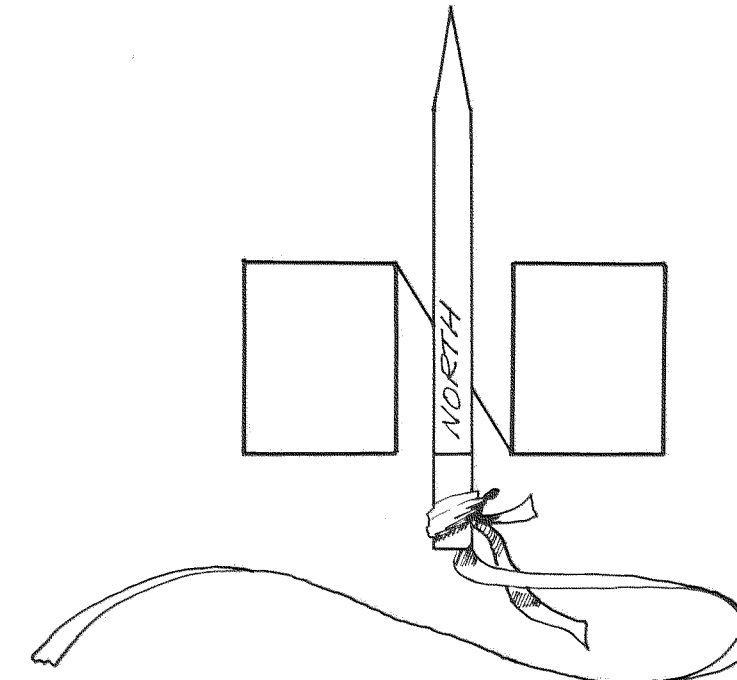
THIS SURVEY WAS PERFORMED AT THE REQUEST OF THE HOOD RIVER COUNTY FORESTRY DEPT. IN ORDER TO LOCATE THE EAST 1/16TH CORNER BETWEEN SECTIONS 23 & 26 T.1N., R.10E., W.M.
CONTROL FOR THIS SURVEY WAS ESTABLISHED BY TYING TOGETHER, BY FIELD TRAVERSE THE 1/4 CORNER BETWEEN 22, 27 AND THE 1/4 CORNER BETWEEN 23, 26. THE TWO CORNERS WERE PREVIOUSLY TIED DURING COUNTY SURVEY NO. 84054. THE TRAVERSE WAS THEN EXTENDED EAST TO THE 1/16 CORNER, WHICH WAS MONUMENTED.

Richard J. Arnold
COUNTY SURVEYOR

REGISTERED
PROFESSIONAL
LAND SURVEYOR

Richard J. Arnold

OREGON
JULY 15, 1983
RICHARD J. ARNOLD
2038



BASIS OF BEARING H.R.C. SURVEY
DATED OCTOBER 9, 1984, NO. 84054

SCALE 1" = 400'

FILED

DATE: DECEMBER 14TH 1987

DECEMBER 1987

DATE OF SURVEY

87080

DRAWING NO.

Richard J. Arnold
COUNTY SURVEYOR

HOOD RIVER COUNTY
SURVEY

T.1N., R.10E., W.M.

SECTION 26
DECEMBER 1987

