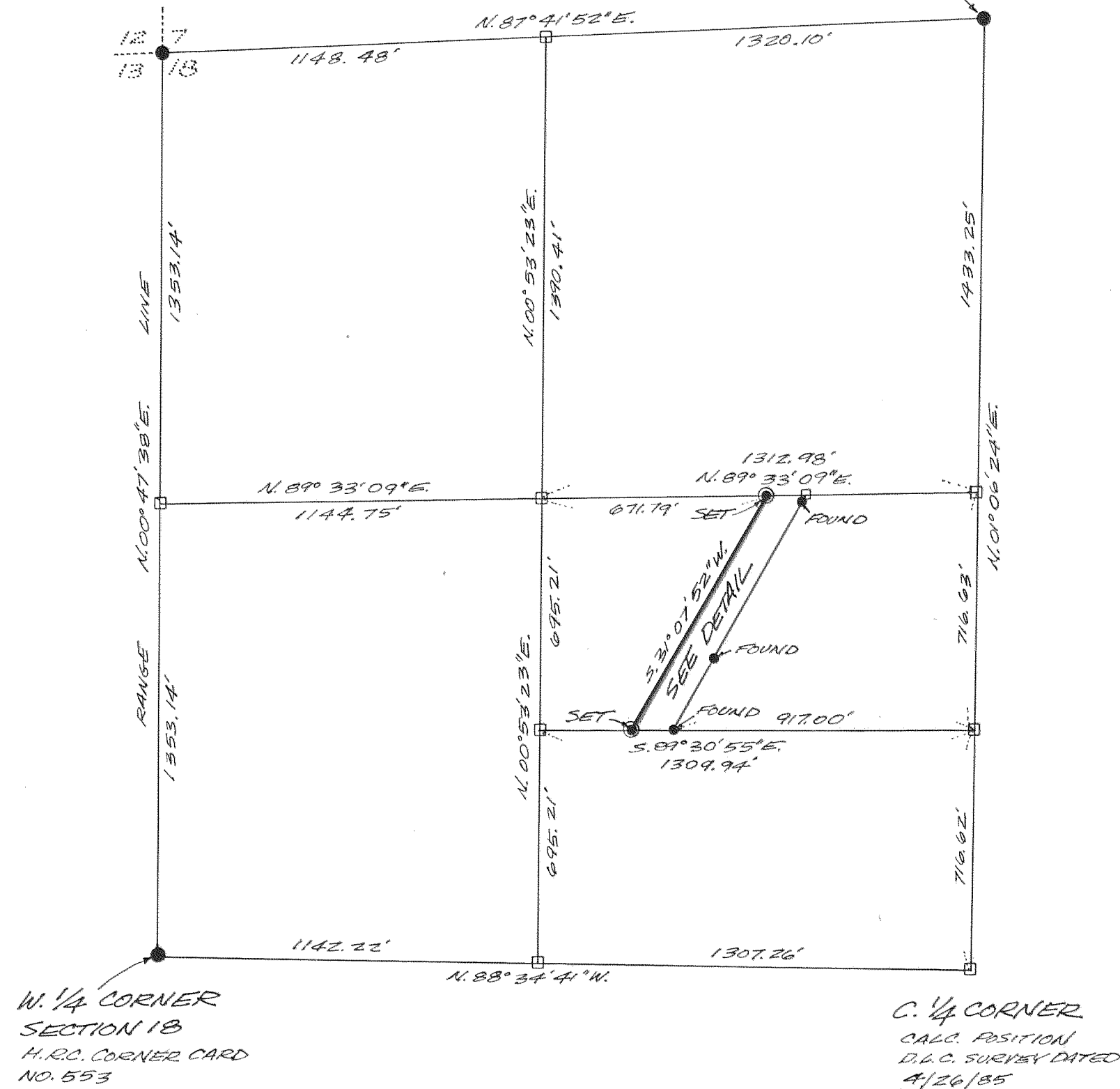


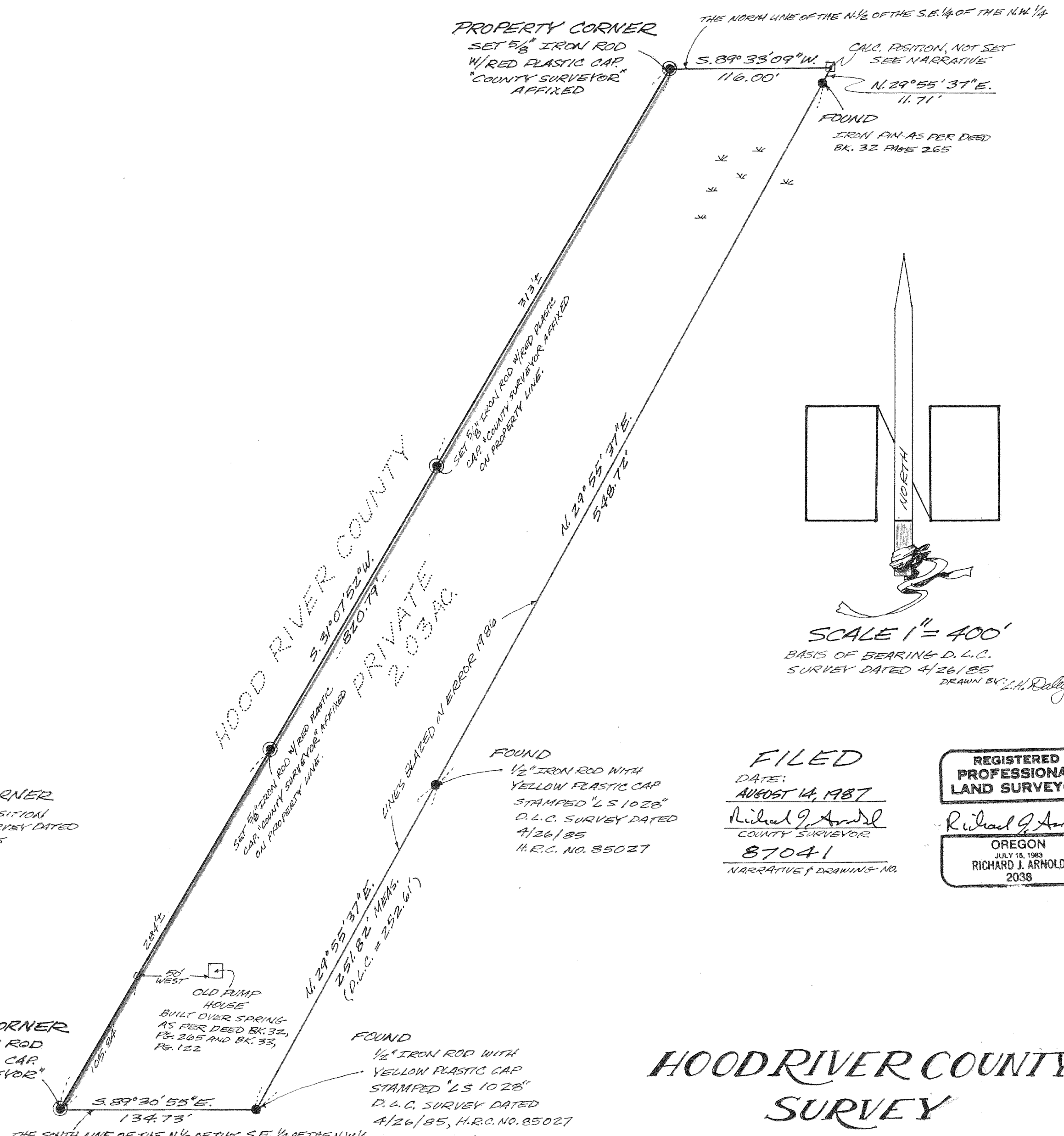
N.W. CORNER  
SECTION 18  
H.R.C. CORNER CARD  
NO. 195

N. 1/4 CORNER  
SECTION 18  
H.R.C. CORNER CARD  
NO. 525



W. 1/4 CORNER  
SECTION 18  
H.R.C. CORNER CARD  
NO. 553

C. 1/4 CORNER  
CALC. POSITION  
D.L.C. SURVEY DATED  
4/26/85

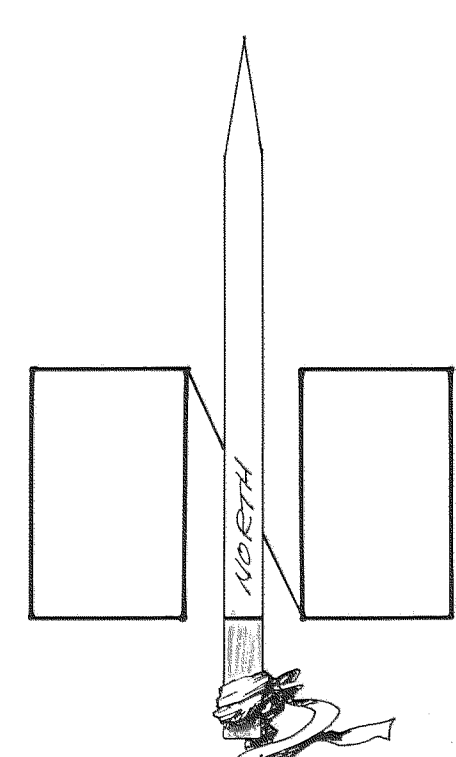


PROPERTY CORNER  
SET 5/8\"/>

FOUND  
1/2\"/>

DETAIL  
SCALE 1\"/>

FOUND  
IRON PIN AS PER DEED  
BK. 32 PAGE 265



SCALE 1\"/>

FILED  
DATE:  
AUGUST 14, 1987  
Richard J. Arnold  
COUNTY SURVEYOR  
87041  
NARRATIVE & DRAWING NO.

REGISTERED  
PROFESSIONAL  
LAND SURVEYOR  
Richard J. Arnold  
OREGON  
JULY 15, 1983  
RICHARD J. ARNOLD  
2038

HOOD RIVER COUNTY  
SURVEY

T. 1 S., R. 10 E., W. 1 M., SECTION 18  
JULY 1987

SEE SEPARATE NARRATIVE