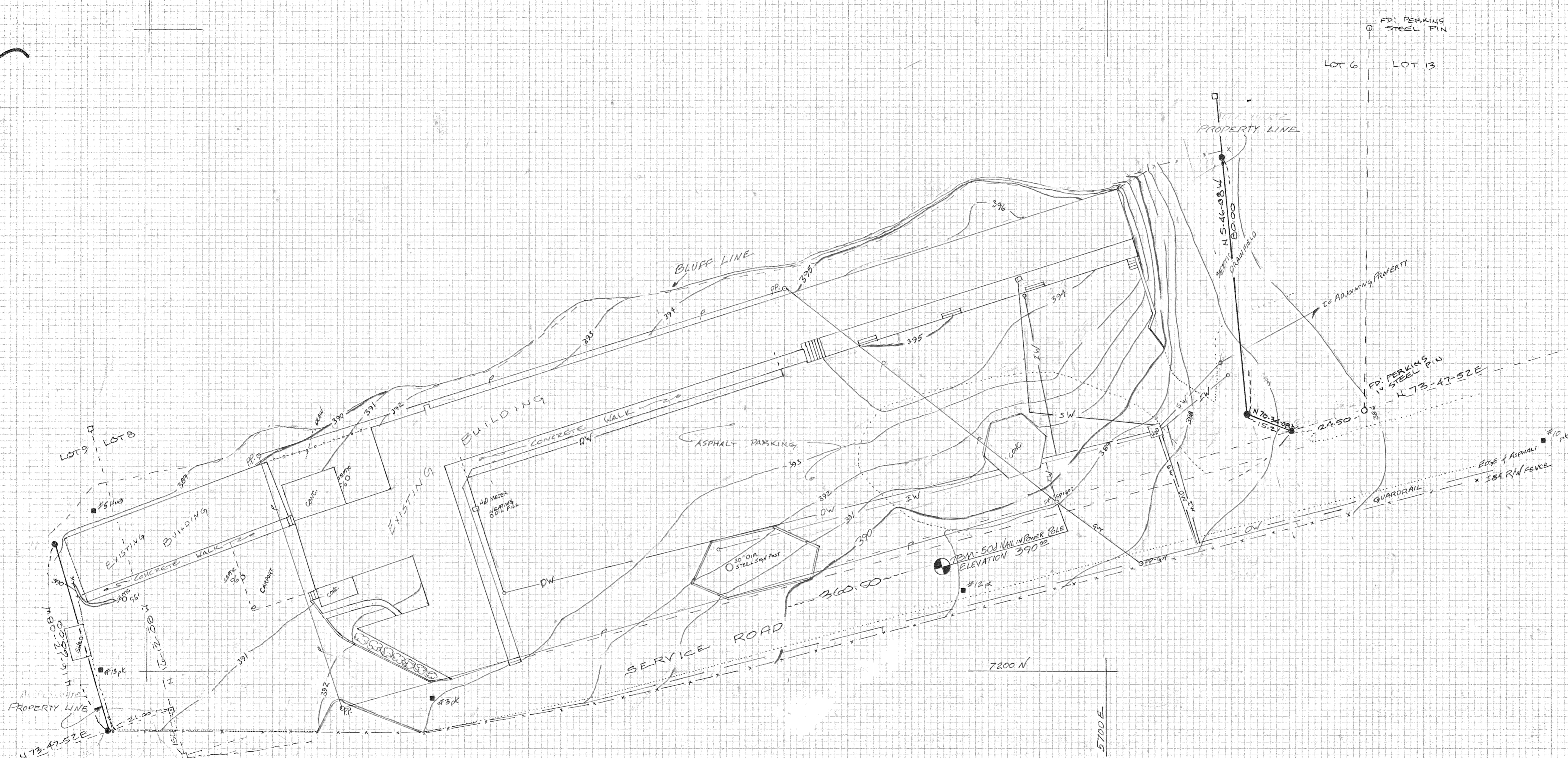
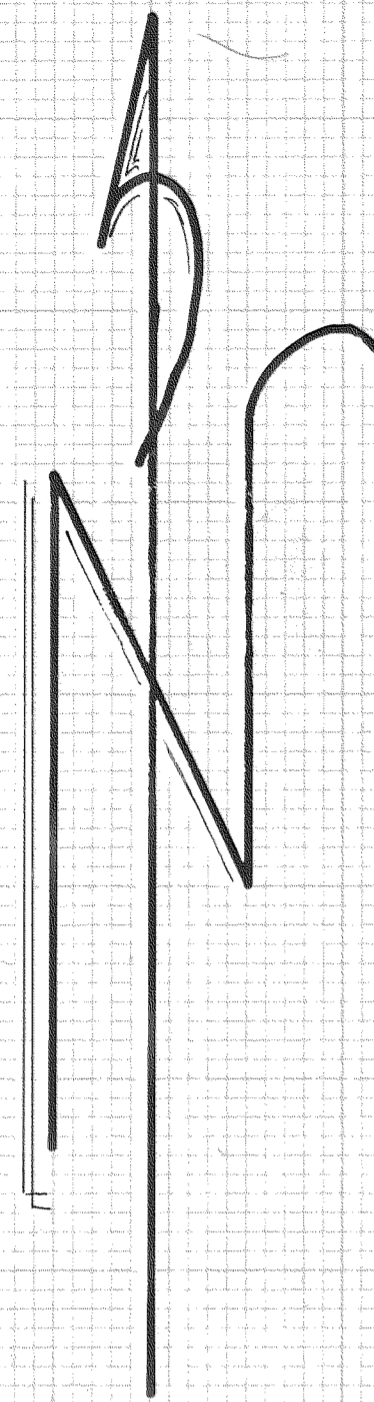


# 86065



LOCATION  
PARTS of LOTS 6, 7 AND 8, CLIFTON PARK SUBDIVISION, SE 1/4 of the SE 1/4 SECTION 28, T 3 N, R 10 E, W 1.

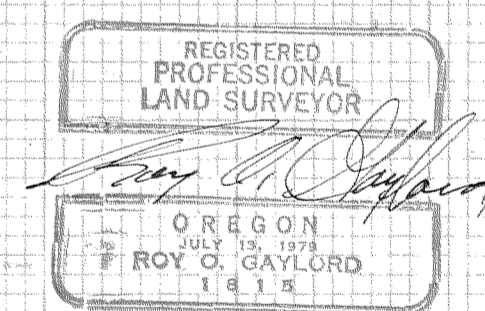
BASIS of BEARING  
TERRA PROJECT # 8350

VERTICAL DATUM  
STATE HIGHWAY CONTROL MAP

SCALE  
1" = 20'

LEGEND

- #10 CONTROL POINT
  - ○ UTILITY POLE/LINES
  - CONCRETE CURB
  - 90 SEPTIC CLEAN OUT
  - DW DOMESTIC WATER/VALVE
  - IW IRRIGATION WATER/VALVE
  - SW SPRING WATER/VALVE
- NOTE: UNDERGROUND UTILITIES SHOWN AS APPROXIMATE LOCATION. SIZE IS UNDETERMINED OR UNCERTAIN.
- SET 3/8" X 30" IRON ROD
  - FOUND MONUMENT OF RECORD



TOPOGRAPHIC SURVEY  
**MEREDITH GORGE MOTEL**  
% JIM SWANSON  
HOOD RIVER, OREGON

**FILED**  
DEC 5 1986  
Roy O. Gaylord  
COUNTY SURVEYOR  
DEPUTY

TERRA SURVEYING  
DATE: AUGUST 1986  
PROJECT # 8628  
P.O. BOX 617  
HOOD RIVER, OREGON 97031  
(503) 386-4531

# 86065